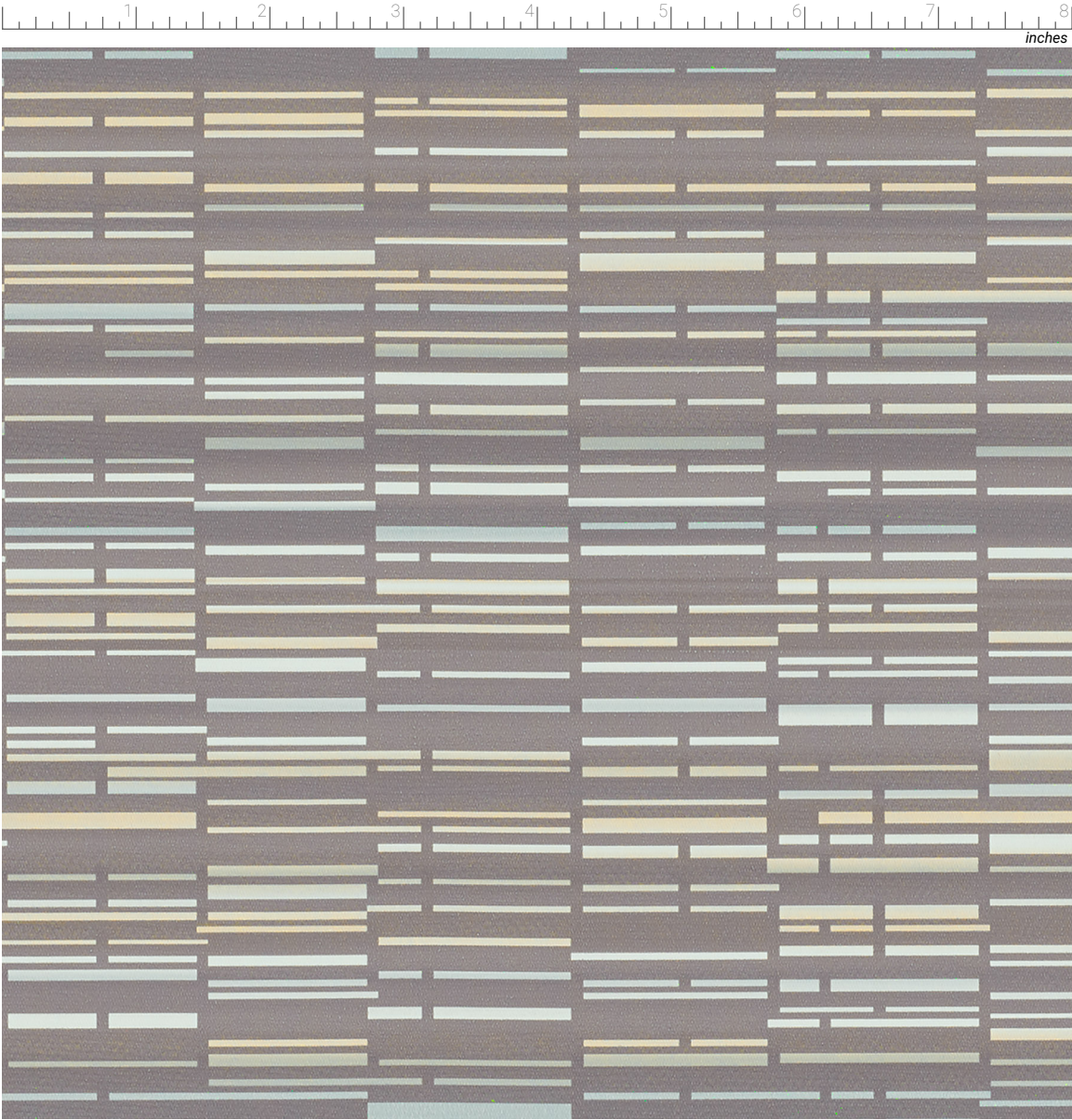


# Blink Ombre

BNK10 Pewter

VINYL SEATING



## Performance Summary

- Enhanced soil + stain resistance
- Enhanced abrasion resistance
- CFFA-Healthcare-201: Certified
- Enhanced ink resistance
- Denim stain resistant
- Fluid barrier
- Bleach-solution cleanable
- Enhanced fade resistance

## Environmental

- GREENGUARD Gold Certified
- REACH Compliant
- RoHS Compliant
- No PFAS, fluorocarbons or perfluorinated compounds
- No added flame retardants
- No added antimicrobials
- Does not contain formaldehyde
- Formulated without Phthalates

## Cleaning and Maintenance

Cleaning Code: **(W)** Clean with water-based foam or water-based cleaners only. Do not use solvents. We recommend using a professional cleaning service.

Bleach solutions of up to 10% may be used for more difficult stains.

Dye lots may vary slightly.

\* This term and any corresponding data refer to the typical performance in the tests indicated and should not be construed to imply the behavior of this or any other material under actual fire conditions.

\*\* Multiple factors affect fabric durability and appearance retention, including end-user application and proper maintenance. Wyzenbeek results above 100,000 double rubs have not been shown to be an indicator of increased lifespan.

## Specifications



|           |   |
|-----------|---|
| Content   | Non-Phthalate Vinyl Surface with Polyester Backing          |
| Finish    | Advanced Soil and Stain Resistant Top Coat + ink resistance |
| Backing   | Polyester Fabric  |
| Weight    | 30.0 oz./lin. yd. ± 1.0 oz.                                 |
| Width     | 54 inches   |
| Repeat    | Horizontal: 13.5 inches, Vertical: 18.0 inches, directional |
| Roll Size | 30 yards  |

## Performance Characteristics

|                                   |  |
|-----------------------------------|--|
| Abrasion Resistance** ASTM D-4157 | Exceeds 100,000 double rubs - heavy duty |
| Adhesion ASTM D-751               | Warp: 3.3 lbs. min., Fill: 3.3 lbs. min. |
| Break Strength CFFA-17            | Warp: 121 lbs. min., Fill: 72 lbs. min.  |
| Tear Strength CFFA-16             | Warp: 5.6 lbs. min., Fill: 5.9 lbs. min. |
| Seam Slippage CFFA-14             | Warp: 46 lbs. min., Fill: 35 lbs. min.   |
| Colorfastness to Light CFFA-2     | 1000 Hours, Class 4.5                    |
| Crocking CFFA-7                   | Dry: Class 4.0, Wet: Class 4.0           |
| Fluid Barrier                     | Inherent Fluid Barrier                   |

## Flammability\*

|  |         |
|--|---------|
| California Technical Bulletin 117-2013 Section 1 | Passed  |
| NFPA 260   | Class 1 |
| UFAC   | Class 1 |



# Stinson®

C.F. Stinson, LLC  
2849 Product Drive  
Rochester Hills, MI 48309

P 800 841 6279  
F 248 299 3884

cfstinson.com