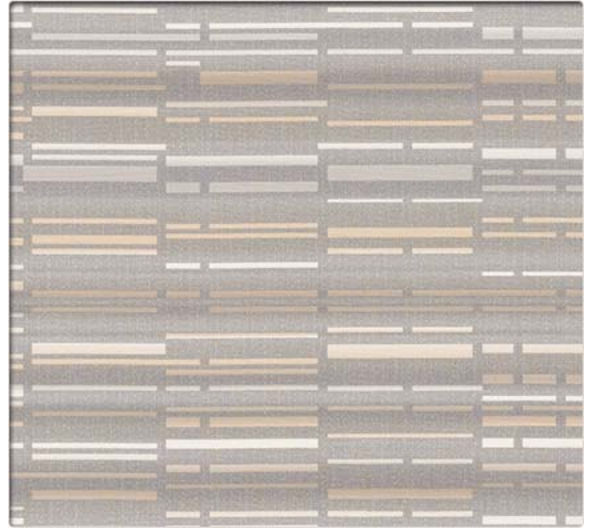


# Blink Ombre

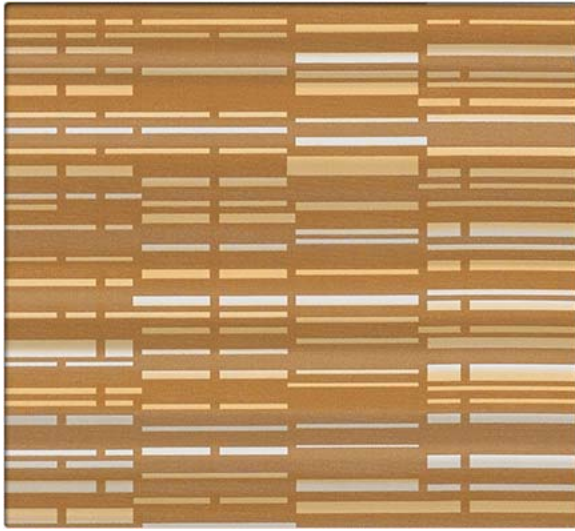
VINYL SEATING



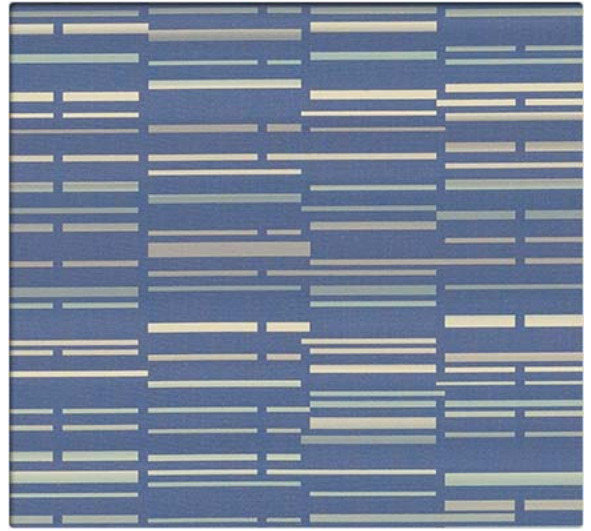
BNK10 Pewter



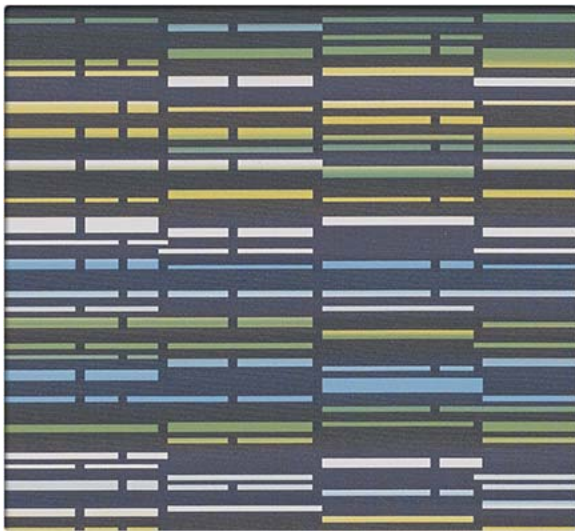
BNK11 Ghost



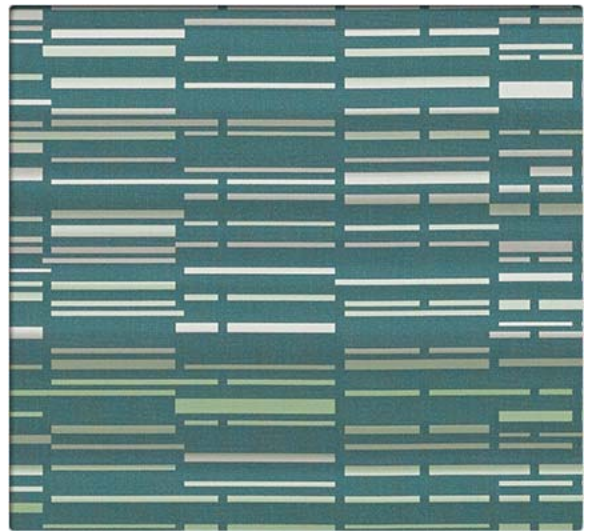
BNK12 Amber



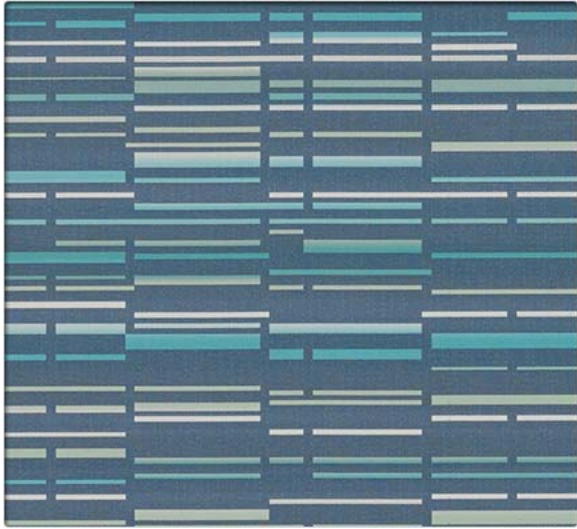
BNK13 Coastal



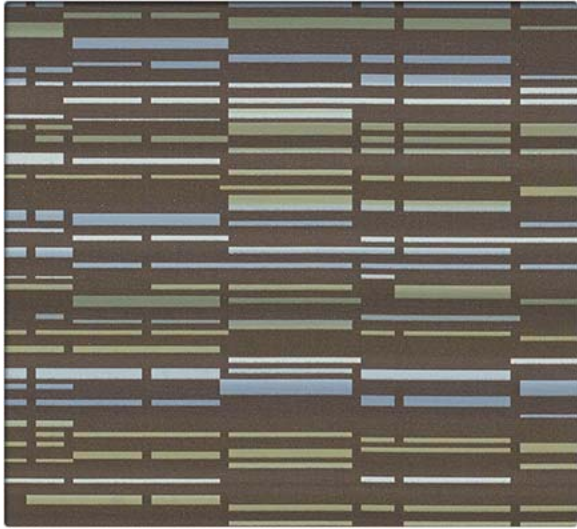
BNK19 Regent



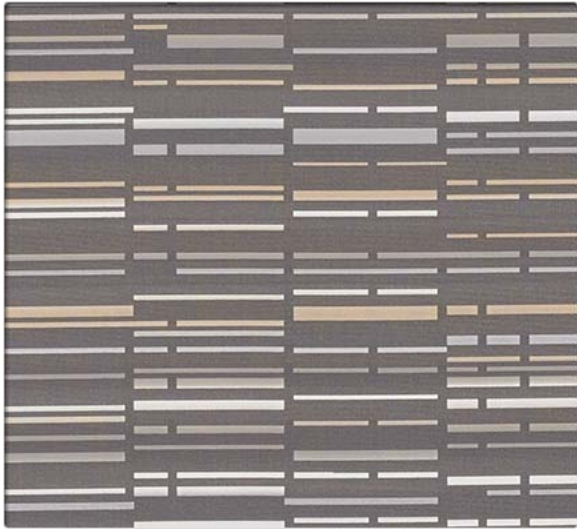
BNK15 Viridian



BNK16 Cyan



BNK18 Loam



BNK14 Basalt

## Performance Summary

- Enhanced soil + stain resistance
- Enhanced abrasion resistance
- CFFA-Healthcare-201: Certified
- Enhanced ink resistance
- Denim stain resistant
- Fluid barrier
- Bleach-solution cleanable
- Enhanced fade resistance

## Environmental

- GREENGUARD Gold Certified
- REACH Compliant
- RoHS Compliant
- No PFAS, fluorocarbons or perfluorinated compounds
- No added flame retardants
- No added antimicrobials
- Does not contain formaldehyde
- Formulated without Phthalates

## Cleaning and Maintenance

Cleaning Code: **(W)** Clean with water-based foam or water-based cleaners only. Do not use solvents. We recommend using a professional cleaning service.

Bleach solutions of up to 10% may be used for more difficult stains.

Dye lots may vary slightly.

\* This term and any corresponding data refer to the typical performance in the tests indicated and should not be construed to imply the behavior of this or any other material under actual fire conditions.

\*\* Multiple factors affect fabric durability and appearance retention, including end-user application and proper maintenance. Wyzenbeek results above 100,000 double rubs have not been shown to be an indicator of increased lifespan.

## Specifications



Content	Non-Phthalate Vinyl Surface with Polyester Backing
Finish	Advanced Soil and Stain Resistant Top Coat + ink resistance
Backing	Polyester Fabric
Weight	30.0 oz./lin. yd. ± 1.0 oz.
Width	54 inches
Repeat	Horizontal: 13.5 inches, Vertical: 18.0 inches, directional
Roll Size	30 yards

## Performance Characteristics

Abrasion Resistance** ASTM D-4157	Exceeds 100,000 double rubs - heavy duty
Adhesion ASTM D-751	Warp: 3.3 lbs. min., Fill: 3.3 lbs. min.
Break Strength CFFA-17	Warp: 121 lbs. min., Fill: 72 lbs. min.
Tear Strength CFFA-16	Warp: 5.6 lbs. min., Fill: 5.9 lbs. min.
Seam Slippage CFFA-14	Warp: 46 lbs. min., Fill: 35 lbs. min.
Colorfastness to Light CFFA-2	1000 Hours, Class 4.5
Crocking CFFA-7	Dry: Class 4.0, Wet: Class 4.0
Fluid Barrier	Inherent Fluid Barrier

## Flammability\*

California Technical Bulletin 117-2013 Section 1	Passed
NFPA 260	Class 1
UFAC	Class 1



# Stinson®

C.F. Stinson, LLC  
2849 Product Drive  
Rochester Hills, MI 48309

P 800 841 6279  
F 248 299 3884

cfstinson.com