

Calypso + Neptune + Triton

Burch
Press Release



For Immediate Release

The Burch Design Studio has partnered with SEAQUAL INITIATIVE™ to introduce Calypso, Neptune, and Triton - a trio of textures with conservation at its core. SEAQUAL INITIATIVE™ works with ocean clean-up programs around the world, raising awareness of the issue of marine plastic pollution and highlighting the heroes who are working to solve it. Calypso, Neptune, and Triton are woven with SEAQUAL® YARN - a high-quality 100% post-consumer recycled polyester yarn made from marine plastic waste. Voluminous chenille and buoyant boucle yarns not only provide a luxurious softness to each fabric but also symbolize the lofty ambition of this incredible initiative. Endlessly inspired by the ocean, the collection features a palette awash with saltwater blues, sand castle naturals, and soft shades of the setting sun.

Furthering a long-term commitment to sustainability, Calypso, Triton, and Neptune are fully protected with Crypton so they'll maintain their beauty for years to come.

Our oceans are our greatest shared natural resource. Together we can clean, repair, and protect them. Each yard sold of Calypso, Neptune, and Triton help prevent more plastic from ending up in the environment and our oceans.

For inspiration, editorial imagery, and videos of this collection please visit Burchfolio (<https://burchfolio.com>)

Burchfolio
GET INSPIRED.

About Burch

What started out in 1904 as a small upholstery shop in downtown Grand Rapids, Michigan has grown into a worldwide brand synonymous with innovative products that provide quality and value. Burch offers an extensive selection of materials for coordinated application in the hospitality, senior living, corporate and healthcare markets. Our progressive collections of High Performance Seating, Crypton, Vinyl, PVC Free Polyurethane,

Silicone, and Vertical Surface Fabrics are developed with our customer's needs in mind. Our in-house design team strives to develop innovative products to meet the ever changing demands of our industry, whether it be the latest color trends or providing solutions for the latest technical challenges. Our entire offering is inventoried in multiple warehouses throughout North America, allowing for exceptional delivery times.

For Press Information Contact

Laura Back
616.698.2800 x219 laurab@burchfabrics.com

Burch

Toll Free 1.800.841.8111

Visit us at BurchFabrics.com

Calyпсо

Burch
Press Release

- 14 Colorways
- Bleach Cleanable
- **Crypton® Super Fabric**
- **Free of FR Chemicals** / CAL AB 2998 Compliant

Calyпсо dances to the beat of its own drum. Playful multicolored yarns are accentuated by a subtle glimmer, like reflections on the water.



Whitecap 1011596



Mermaid 1011591



Kelp 1011592



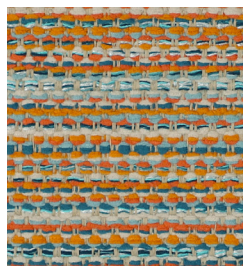
Stormcloud 1011597



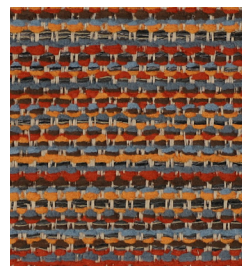
Sandpiper 1011595



Island 1011593



Seabreeze 1011584



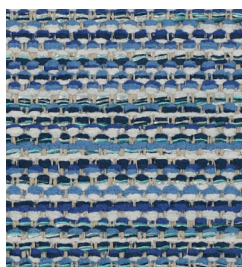
Sunset 1011585



Coral Reef 1011586



Tahiti 1011594



Baltic 1011588



Cayman 1011590



Lagoon 1011589



Pacific 1011587

Fabric is not shown to scale.

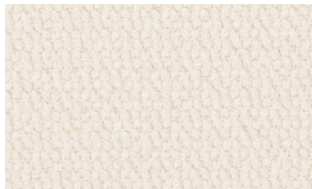
Toll Free **1.800.841.8111**

Visit us at **BurchFabrics.com**

Neptune

- 16 Colorways
- Bleach Cleanable
- Crypton® Super Fabric
- Free of FR Chemicals / CAL AB 2998 Compliant

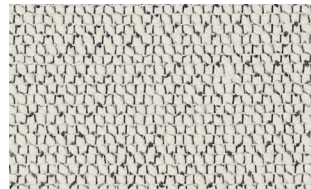
Neptune is a nubby boucle texture that embodies the easy-breezy vibe of a coastal town.



Pearl 1011568



Shell 1011570



Orca 1011569



Oyster 1011571



Glacier 1011578



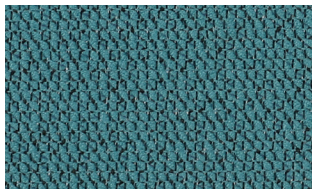
Surf 1011583



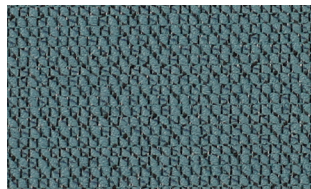
Vessel 1011577



Shark 1011576



Tropic 1011581



Mediterranean 1011580



Atlantic 1011579



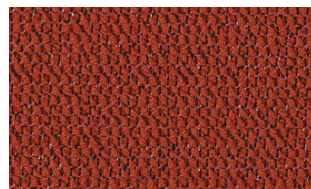
Turtle 1011582



Sunray 1011537



Beach 1011572



Portside 1011574



Otter 1011575

Fabric is not shown to scale.

- 14 Colorways
- Bleach Cleanable
- Crypton® Super Fabric
- Free of FR Chemicals / CAL AB 2998 Compliant

A small-scale plaid big on impact, Triton's strong angles are softened by a full-face chenille surface.



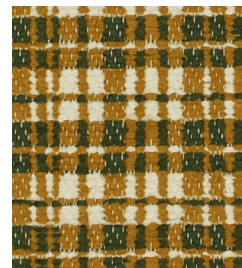
Dune 1011609



Boardwalk 1011611



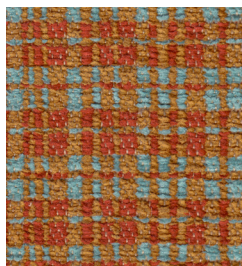
Breakwall 1011610



Wharf 1011599



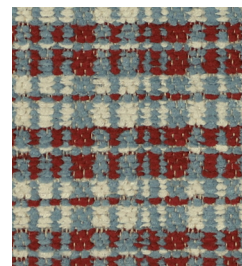
Lighthouse 1011608



Koi 1011598



Cabana 1011600



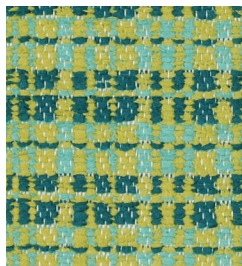
Heron 1011601



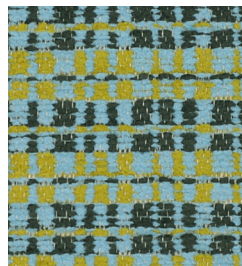
Depth 1011602



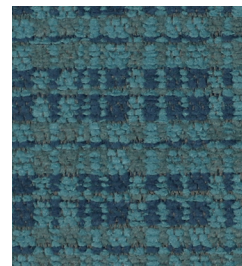
Aruba 1011605



Nori 1011606



Oasis 1011607



Riptide 1011604



Admiral 1011603

Fabric is not shown to scale.