



For Immediate Release

Pattern Play

The Burch Design Studio introduces Batik, Ikat, and Patchwork; a trio of textiles honoring classic textiles in a contemporary way. Modern touches and textural details applied to traditional patterns create a collection that feels at once timeless and fresh. Connecting present to past, a collective palette honors natural pigments like indigo blues, sumac reds, and sagebrush neutrals. Thanks to the superior performance of Crypton Batik, Ikat and Patchwork will impart lasting beauty to spaces for years to come.

Batik is a modern shibori realized in watercolor gradients for a lived-in aesthetic. Batik is offered in twelve unique ombre color combinations like Safari and Phoenix. Variegated stripes

with faded edges float upon **Ikat's** white-washed ground. Ikat is available in twelve organic shades with an emphasis on soft neutrals and soothing aquas. A contemporary nod to quilting, **Patchwork** combines angular motifs with textural charm. Available in twelve hues with varying levels of contrast like bold Raven and subtle Melon.

For inspiration, editorial imagery, and videos of this collection please visit Burchfolio (<https://burchfolio.com>)

Burchfolio
GET INSPIRED.

About Burch

What started out in 1904 as a small upholstery shop in downtown Grand Rapids, Michigan has grown into a worldwide brand synonymous with innovative products that provide quality and value. Burch offers an extensive selection of materials for coordinated application in the hospitality, senior living, corporate and healthcare markets. Our progressive collections of High Performance Seating, Crypton, Vinyl, PVC Free Polyurethane,

Silicone, and Vertical Surface Fabrics are developed with our customer's needs in mind. Our in-house design team strives to develop innovative products to meet the ever changing demands of our industry, whether it be the latest color trends or providing solutions for the latest technical challenges. Our entire offering is inventoried in multiple warehouses throughout North America, allowing for exceptional delivery times.

For Press Information Contact

Laura Back
616.698.2800 x219 laurab@burchfabrics.com

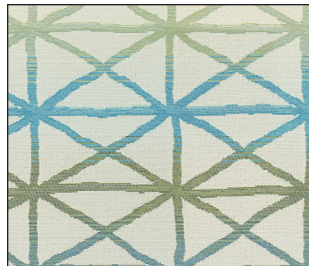
Burch

- 12 Colorways
- Bleach Cleanable
- Crypton® Super Fabric
- Free of FR Chemicals / CAL AB 2998 Compliant

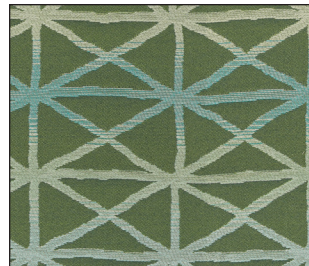
Batik is a modern shibori realized in watercolor gradients for a lived-in aesthetic. Batik is offered in twelve unique ombre color combinations like Safari and Phoenix.



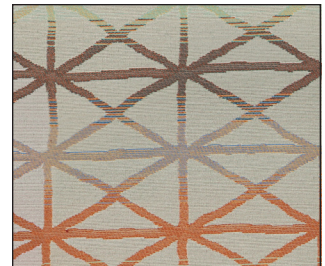
Veil 1011903



Seabreeze 1011902



Sprout 1011901



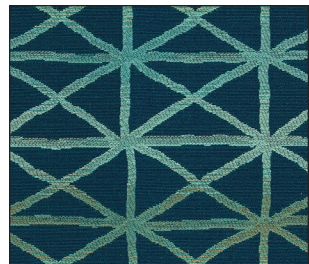
Safari 1011893



Driftwood 1011904



Phoenix 1011894



Grotto 1011900



Paprika 1011896



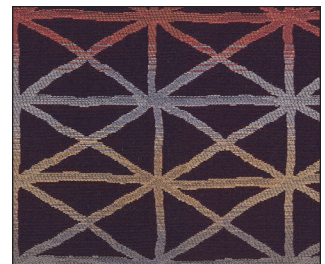
Greystone 1011895



Crystal 1011899



Pier 1011898



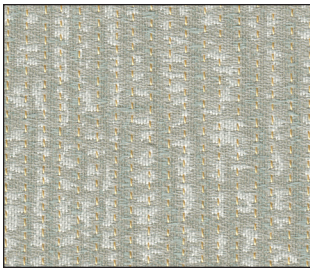
Plum 1011897

Fabric is not shown to scale.

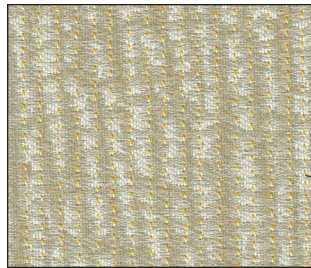
Ikat

- 12 Colorways
- Bleach Cleanable
- Crypton® Super Fabric
- Free of FR Chemicals / CAL AB 2998 Compliant

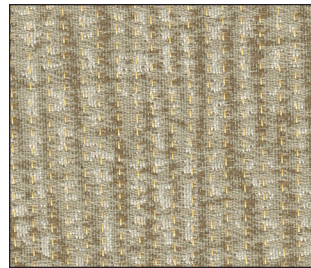
Variegated stripes with faded edges float upon Ikat's white-washed ground. Ikat is available in twelve organic shades with an emphasis on soft neutrals and soothing aquas.



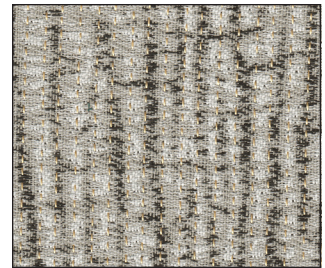
Glacier 1011913



Vanilla 1011914



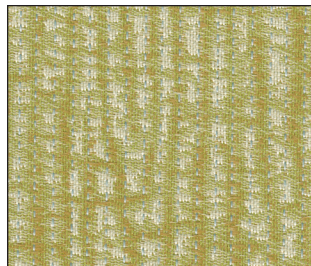
Beach 1011915



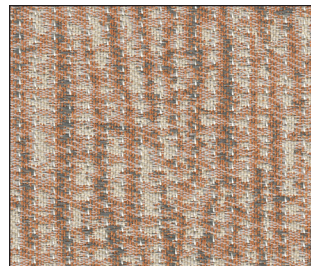
Marble 1011916



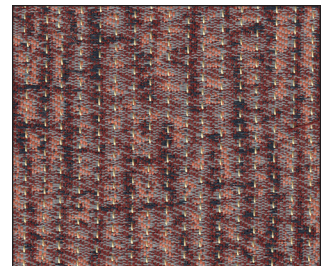
Seaglass 1011905



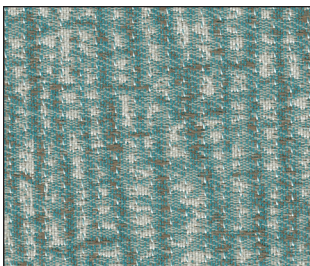
Chartreuse 1011912



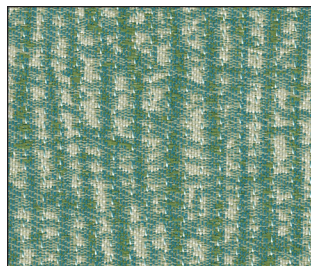
Coral 1011911



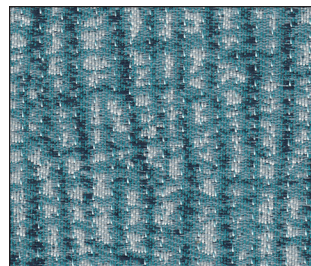
Mulberry 1011910



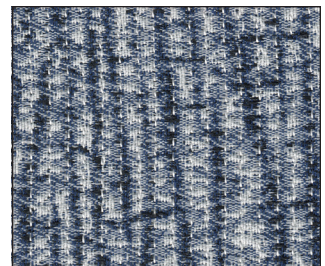
Mirage 1011907



Mermaid 1011906



Cerulean 1011908



Federal 1011909

Fabric is not shown to scale.

Patchwork

- 12 Colorways
- Bleach Cleanable
- Crypton® Super Fabric
- Free of FR Chemicals / CAL AB 2998 Compliant

A contemporary nod to quilting, Patchwork combines angular motifs with textural charm. Available in twelve hues with varying levels of contrast like bold Raven and subtle Melon.



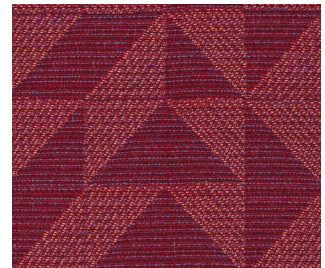
Amber 1011928



Overcast 1011927



Breeze 1011923



Orchid 1011917



Dune 1011925



Melon 1011924



Bahama 1011921



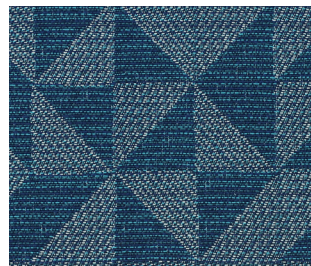
Scarlet 1011918



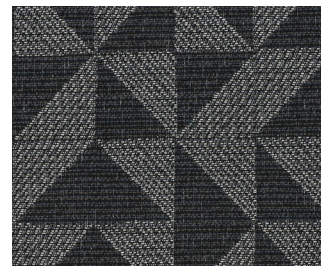
Earl Grey 1011926



Clover 1011922



Aegean 1011920



Raven 1011919

Fabric is not shown to scale.