

Tahitian Linen

# BOLTA



Sand **BB-TL-10**



 Render Ready Tiles available

Coffee **BB-TL-12**

### Cleanability

Inherent anti-microbial protection  
Withstands hospital-grade cleaners & disinfectants  
Available as a custom with **INVISICAP** complete chemical protection

### Physical Properties

WEIGHT: 20 oz. PLY, 620 G/PLM 13.3 oz. PSY, 451 G/PSM  
BACKING: Osnaburg MATCH: Straight Random  
WIDTH: 54"/137cm

Meets or exceeds Federal Specification CCC-W-408D  
Custom colors, weights, and micro venting available

### Environmental

- Low VOC, California section 01350 IAQ
- 10% Recycled content
- Non-Phthalate
- EPD/HPD
- California Prop 65, no labeling required

Product Specifications, Fire Safety & Ratings, Environment & Health and Warranty is available at [www.boltawallcovering.com](http://www.boltawallcovering.com)

Tahitian Linen

# BOLTA

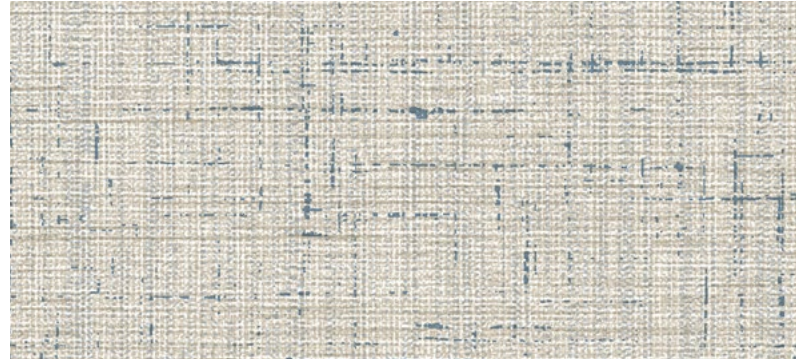


Type II / 20 oz. low voc recycled content

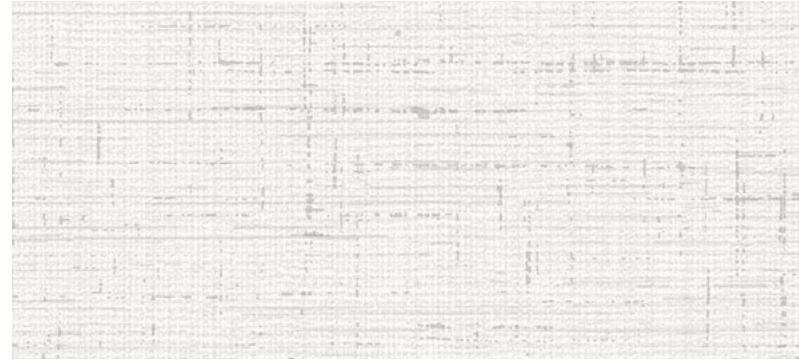
Sand **BB-TL-10**



# Tahitian Linen



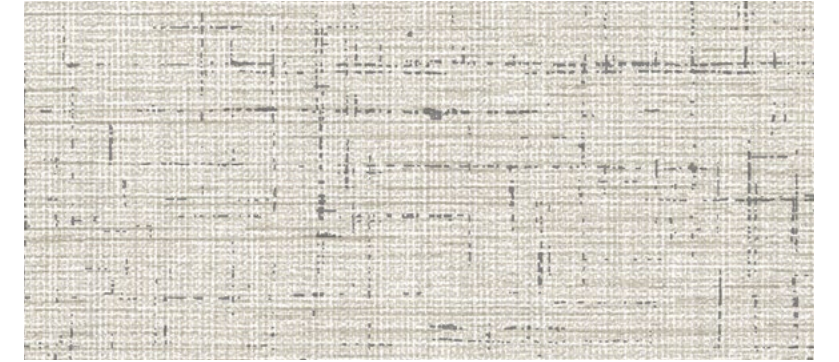
Denim **BB-TL-01**



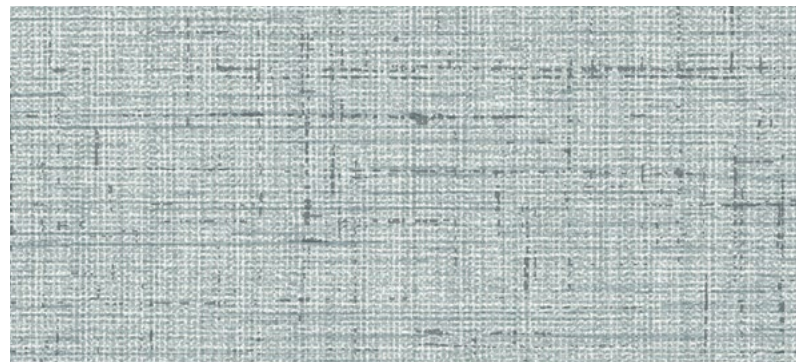
Cloud **BB-TL-05**



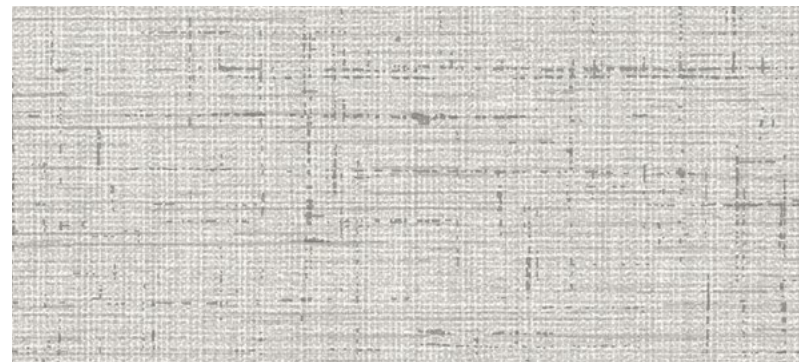
Ivory **BB-TL-09**



Horsehair **BB-TL-13**



Pacific **BB-TL-02**



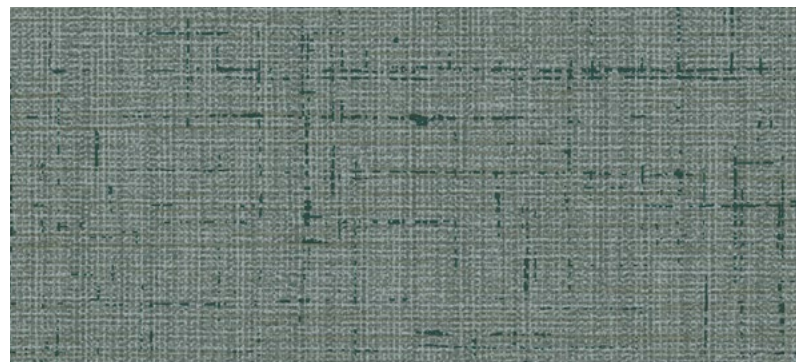
Ice **BB-TL-06**



Sand **BB-TL-10**



Flax **BB-TL-14**



Emerald **BB-TL-03**



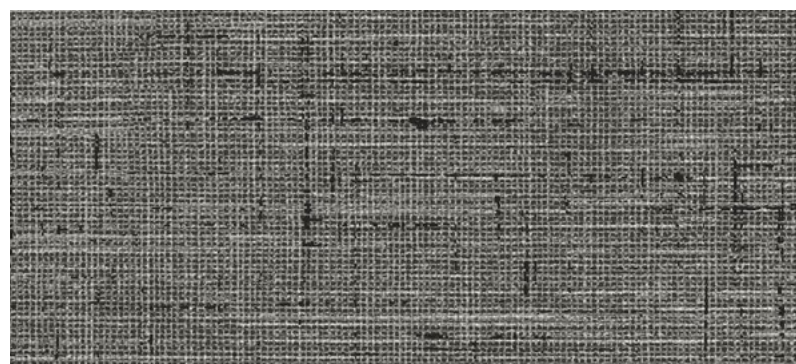
Pebble **BB-TL-07**



Khaki **BB-TL-11**



Kraft **BB-TL-15**



Slate **BB-TL-04**



Flint **BB-TL-08**



Coffee **BB-TL-12**



Terracotta **BB-TL-16**