

SOLARSHADE FURNITURE

BY ENNIS FABRICS

ABOUT THE FABRICS / À PROPOS DES TISSUS

Features: Water resistant, 1000 hours UV, Anti-stain, Flame Retardant, Bleach Cleanable
End Uses: Indoor-Outdoor Upholstery and Hospitality

Caractéristiques: Résistant aux tache (Endurepel Shield), résistant aux feu
Utilisations: Tissu de rembourrage convenant et hospitalité



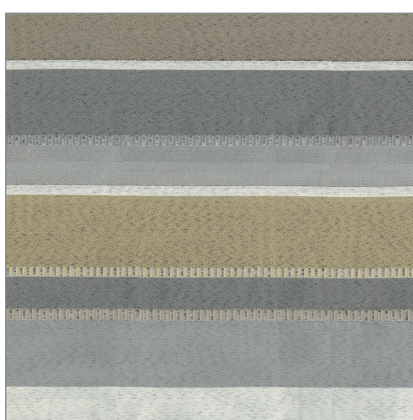
ACACIA 909 MIDNIGHT



CAPTIVATE 902 GARDEN PATH



LOGGIA 902 CINDER



PORTICO 902 GARDEN PATH



TRINKET 902 CINDER



WINK 99 STONE

Introducing the newest member of the SolarShade family: SolarShade Secret Garden Indoor & Outdoor fabrics. A curated collection of traditional and modern styles designed to bring the magic and wonder of a secret garden to your home. The incredible features of this collection, like mold and mildew resistance, high UV rating, and inherent FR status ensure durability and longevity of each fabric. Secret Garden's beautiful, colorful, and eco-friendly fabrics are made of 100% solution-dyed polyester which uses 83% less water in its production, making them a big part of our sustainability efforts.

Voici le tout nouveau membre de la famille SolarShade : SolarShade Secret Garden, tissus Intérieur et Extérieur. Une sélection de styles traditionnels et modernes conçue pour apporter la magie et l'émerveillement d'un jardin secret à votre maison. Les caractéristiques incroyables de cette collection, telles que la résistance à la moisissure, une protection contre les rayons UV et un statut ignifuge inhérent garantissent la durabilité et la longévité de cette impressionnante ligne. Les beaux tissus colorés et respectueux de l'environnement de Secret Garden sont fabriqués à partir de polyester 100 % teint en solution qui utilise 83 % moins d'eau dans sa production, contribuant grandement à nos efforts de développement durable.



SOLARSHADE FURNITURE

BY ENNIS FABRICS

SPECIFICATIONS* / SPÉCIFICATIONS*

PATTERN NAME / NOM DE DESSIN	ACACIA	ANGELICA	CAPTIVATE	FILBERT	HOLLY	JUNIPER	LOGGIA	MYRTLE	PORTICO	SEQUOIA	SYCAMORE	TOPIARY	TRINKET	WINK	
CONTENT / COMPOSITION	100% Dyed Polyester	100% Dyed Polyester	100% Dyed Polyester	100% Dyed Polyester	100% Dyed Polyester	100% Dyed Polyester	100% Dyed Polyester	100% Dyed Polyester	100% Dyed Polyester	100% Dyed Polyester	100% Dyed Polyester	100% Dyed Polyester	100% Dyed Polyester	100% Dyed Polyester	
ABRASION / RÉSISTANCE À L'ABRASION	20,000 DR / DF	300,000 [†] DR / DF	20,000 DR / DF	150,000 [†] DR / DF	150,000 [†] DR / DF	20,000 DR / DF	150,000 [†] DR / DF	150,000 [†] DR / DF	40,000 DR / DF	150,000 [†] DR / DF	20,000 DR / DF	150,000 [†] DR / DF	20,000 DR / DF	20,000 DR / DF	
COLORS / COULEURS	6	4	5	6	5	5	6	6	4	14	6	3	9	7	
CROCKING / DÉGORGEMENT	ASTM D3597: Dry (Sec) = Class(e) 4.5, ASTM D3597: Wet (Mouillé) = Class(e) 4.5	ASTM D3597: Dry (Sec) = Class(e) 4.5, ASTM D3597: Wet (Mouillé) = Class(e) 4.5	ASTM D3597: Dry (Sec) = Class(e) 4.5, ASTM D3597: Wet (Mouillé) = Class(e) 4.5	ASTM D3597: Dry (Sec) = Class(e) 4.5, ASTM D3597: Wet (Mouillé) = Class(e) 4.5	ASTM D3597: Dry (Sec) = Class(e) 4.5, ASTM D3597: Wet (Mouillé) = Class(e) 4.5	ASTM D3597: Dry (Sec) = Class(e) 4.5, ASTM D3597: Wet (Mouillé) = Class(e) 4.5	ASTM D3597: Dry (Sec) = Class(e) 4.5, ASTM D3597: Wet (Mouillé) = Class(e) 4.5	ASTM D3597: Dry (Sec) = Class(e) 4.5, ASTM D3597: Wet (Mouillé) = Class(e) 4.5	ASTM D3597: Dry (Sec) = Class(e) 4.5, ASTM D3597: Wet (Mouillé) = Class(e) 4.5	ASTM D3597: Dry (Sec) = Class(e) 4.0, ASTM D3597: Wet (Mouillé) = Class(e) 4.0	ASTM D3597: Dry (Sec) = Class(e) 4.5, ASTM D3597: Wet (Mouillé) = Class(e) 4.5	ASTM D3597: Dry (Sec) = Class(e) 4.5, ASTM D3597: Wet (Mouillé) = Class(e) 4.5	ASTM D3597: Dry (Sec) = Class(e) 4.5, ASTM D3597: Wet (Mouillé) = Class(e) 4.5	ASTM D3597: Dry (Sec) = Class(e) 4.5, ASTM D3597: Wet (Mouillé) = Class(e) 4.5	ASTM D3597: Dry (Sec) = Class(e) 4.5, ASTM D3597: Wet (Mouillé) = Class(e) 4.5
FIRE RETARDANCY / RÉSISTANCE AUX FEU#	CALTB117-2013,NFPA 260 Class(e) 1, UFAC Class(e)1	CALTB117-2013,NFPA 260 Class(e) 1, UFAC Class(e)1	CALTB117-2013,NFPA 260 Class(e) 1, UFAC Class(e)1	CALTB117-2013,NFPA 260 Class(e) 1, UFAC Class(e)1	CALTB117-2013,NFPA 260 Class(e) 1, UFAC Class(e)1	CALTB117-2013,NFPA 260 Class(e) 1, UFAC Class(e)1	CALTB117-2013,NFPA 260 Class(e) 1, UFAC Class(e)1	CALTB117-2013,NFPA 260 Class(e) 1, UFAC Class(e)1	CALTB117-2013,NFPA 260 Class(e) 1, UFAC Class(e)1	CALTB117-2013,NFPA 260 Class(e) 1, UFAC Class(e)1	CALTB117-2013,NFPA 260 Class(e) 1, UFAC Class(e)1	CALTB117-2013,NFPA 260 Class(e) 1, UFAC Class(e)1	CALTB117-2013,NFPA 260 Class(e) 1, UFAC Class(e)1	CALTB117-2013,NFPA 260 Class(e) 1, UFAC Class(e)1	
PILLING / BOULOCHAGE	ASTM D3512 Class(e) 4.5	ASTM D3512 Class(e) 4.5	ASTM D3512 Class(e) 4.5	ASTM D3512 Class(e) 4.5	ASTM D3512 Class(e) 4.5	ASTM D3512 Class(e) 4.5	ASTM D3512 Class(e) 4.5	ASTM D3512 Class(e) 4.5	ASTM D3512 Class(e) 4.5	ASTM D3512 Class(e) 4.5	ASTM D3512 Class(e) 4.5	ASTM D3512 Class(e) 4.5	ASTM D3512 Class(e) 4.5	ASTM D3512 Class(e) 4.5	
RAILROADED / DIRECTION DU TISSU	Yes (Oui)	No (Non)	No (Non)	No (Non)	No (Non)	Yes (Oui)	No (Non)	No (Non)	Yes (Oui)	No (Non)	No (Non)	No (Non)	No (Non)	No (Non)	
MILDEW RESISTANCE / RÉSISTANCE À LA MOISSISURE	AATCC 30:III	AATCC 30:III	AATCC 30:III	AATCC 30:III	AATCC 30:III	AATCC 30:III	AATCC 30:III	AATCC 30:III	AATCC 30:III	AATCC 30:III	AATCC 30:III	AATCC 30:III	AATCC 30:III	AATCC 30:III	
SEAM SLIPPAGE / GLISSEMENT DE LA COUTURE	ASTM D4034 - Fill (frame) 91.0 lbs. x Warp (chaîne) 93.1 lbs.	ASTM D4034 - Fill (frame) 82 lbs. x Warp (chaîne) 85.4 lbs.	ASTM D4034 - Fill (frame) 85.1 lbs. x Warp (chaîne) 83.6 lbs.	ASTM D4034 - Fill (frame) 85.1 lbs. x Warp (chaîne) 89.4 lbs.	ASTM D4034 - Fill (frame) 94 lbs. x Warp (chaîne) 97.4 lbs.	ASTM D4034 - Fill (frame) 93.3 lbs. x Warp (chaîne) 90.1 lbs.	ASTM D4034 - Fill (frame) 88 lbs. x Warp (chaîne) 83.4 lbs.	ASTM D4034 - Fill (frame) 89 lbs. x Warp (chaîne) 108.4 lbs.	ASTM D4034 - Fill (frame) 89.4 lbs. x Warp (chaîne) 86.7 lbs.	ASTM D4034 - Fill (frame) 85.1 lbs. x Warp (chaîne) 95.1 lbs.	ASTM D4034 - Fill (frame) 112 lbs. x Warp (chaîne) 92.7 lbs.	ASTM D4034 - Fill (frame) 96.4 lbs. x Warp (chaîne) 95 lbs.	ASTM D4034 - Fill (frame) 87.9 lbs. x Warp (chaîne) 92 lbs.	ASTM D4034 - Fill (frame) 81.8 lbs. x Warp (chaîne) 87.8 lbs.	
UV / LIGHTFASTNESS / RÉSISTANCE AUX RAYONS DE LUMIÈRE	AATCC 16: Class(e) 4	AATCC 16: Class(e) 4	AATCC 16: Class(e) 4	AATCC 16: Class(e) 4	AATCC 16: Class(e) 4	AATCC 16: Class(e) 4	AATCC 16: Class(e) 4	AATCC 16: Class(e) 4	AATCC 16: Class(e) 4	AATCC 16: Class(e) 4	AATCC 16: Class(e) 4	AATCC 16: Class(e) 4	AATCC 16: Class(e) 4	AATCC 16: Class(e) 4	
WEIGHT / POIDS	11.06 oz/yd [vg], 7.11 oz/sq yd [vg*], 241 gsm	13.95 oz/yd [vg], 8.97 oz/sq yd [vg*], 304 gsm	12.99 oz/yd [vg], 8.35 oz/sq yd [vg*], 283 gsm	19.37 oz/yd [vg], 12.45 oz/sq yd [vg*], 422 gsm	13.95 oz/yd [vg], 8.97 oz/sq yd [vg*], 304 gsm	11.84 oz/yd [vg], 7.61 oz/sq yd [vg*], 258 gsm	10.37 oz/yd [vg], 6.67 oz/sq yd [vg*], 226 gsm	10.42 oz/yd [vg], 6.7 oz/sq yd [vg*], 227 gsm	12.48 oz/yd [vg], 8.02 oz/sq yd [vg*], 272 gsm	10.42 oz/yd [vg], 6.7 oz/sq yd [vg*], 227 gsm	13.49 oz/yd [vg], 8.67 oz/sq yd [vg*], 294 gsm	18.36 oz/yd [vg], 11.8 oz/sq yd [vg*], 400 gsm	13.03 oz/yd [vg], 8.38 oz/sq yd [vg*], 284 gsm	12.71 oz/yd [vg], 8.17 oz/sq yd [vg*], 277 gsm	
WIDTH / LARGEUR	54 in. (137 cm)	54 in. (137 cm)	54 in. (137 cm)	54 in. (137 cm)	54 in. (137 cm)	54 in. (137 cm)	54 in. (137 cm)	54 in. (137 cm)	54 in. (137 cm)	54 in. (137 cm)	54 in. (137 cm)	54 in. (137 cm)	54 in. (137 cm)	54 in. (137 cm)	
ROLL SIZE / TAILLE DU ROULEAU	50 yards (46 m)	50 yards (46 m)	50 yards (46 m)	50 yards (46 m)	50 yards (46 m)	50 yards (46 m)	50 yards (46 m)	50 yards (46 m)	50 yards (46 m)	50 yards (46 m)	50 yards (46 m)	50 yards (46 m)	50 yards (46 m)	50 yards (46 m)	

* This information is offered for your general guidance only. It's accurate to the best of our knowledge and is not intended to relieve the user from their responsibility to investigate and understand other pertinent sources of information and to comply with all laws and procedures applicable to the safe handling and use of this material.
[†] Results above 100,000 double rubs have not been shown to be an indicator of increased lifespan.
[‡] This term and any corresponding data refer to typical performance in the specific tests indicated and should not be construed to imply the behaviour of this or any other material under actual fire conditions.
 Due to the nature of numerous different computer and printer settings, the fabric & supply images displayed on this page may not represent the actual product in its entirety. All supplied fabric & supply images in their printed form are to be used for reference only and may not look exactly as shown.

* Ces renseignements sont offerts à titre consultatif seulement. Ils sont précis, au mieux de nos connaissances, et ne sont pas destinés à décharger l'utilisateur de sa responsabilité d'étudier et de comprendre les autres sources pertinentes de renseignements, ni de se conformer à toutes les lois et procédures relatives à la manipulation et à l'utilisation sécuritaires de ce matériau. La décision finale du type d'application du produit appartient à l'utilisateur.
[†] Les doubles frottements supérieurs à 100 000 ne sont pas un indicateur d'une durée de vie accrue pour un produit.
[‡] Les résultats rapportés d'après la norme ci-dessus ne définissent pas nécessairement les risques que représente ce matériau dans des conditions réelles d'incendie.

En raison de la nature de nombreux paramètres d'ordinateur et d'imprimante différents, les images de tissu et de fournitures affichées sur cette page peuvent ne pas représenter le produit réel dans son intégralité. Toutes les images de tissu et de fournitures fournies sous leur forme imprimée doivent être utilisées à titre de référence uniquement et peuvent ne pas ressembler exactement à celles illustrées.

SOLARSHADE FURNITURE

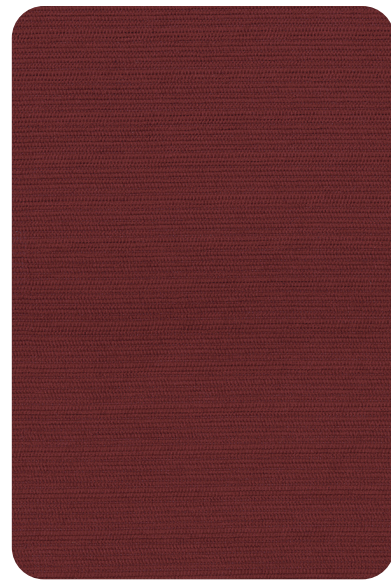
BY ENNIS FABRICS



CARD 2



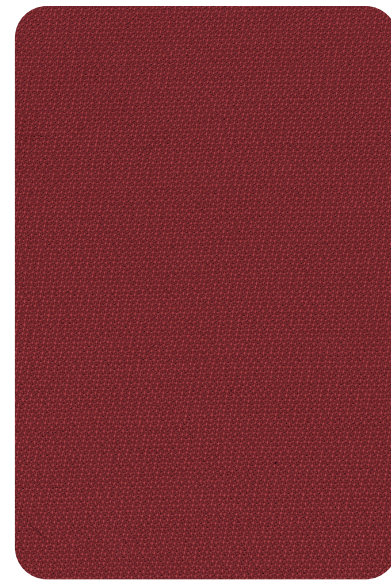
CANADA 800 663 6647 • FRANÇAIS 888 663 6647
 USA 877 353 6647
 ENGLISH 800 663 6647 • FRANÇAIS 888 663 6647
 FAX 888 274 2910
 ORDERS@ENNISFABRICS.COM
 ENNISFABRICS.COM



SYCAMORE 14 POPPY



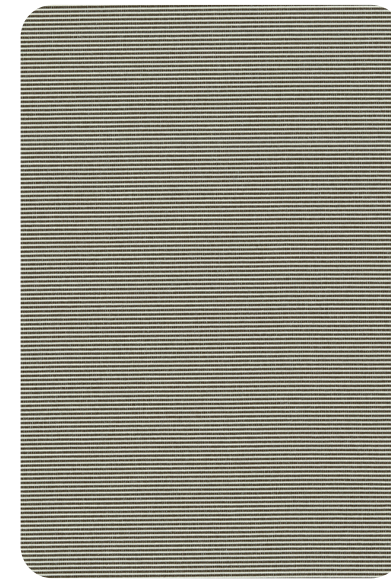
TRINKET 14 POPPY



HOLLY 14 POPPY



SEQUOIA 902 CINDER



MYRTLE 97 PEBBLE



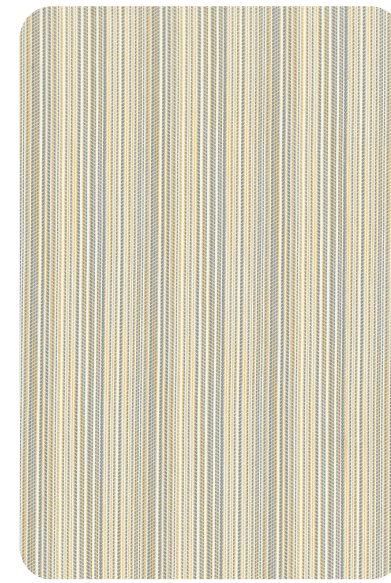
SEQUOIA 601 MAGNOLIA



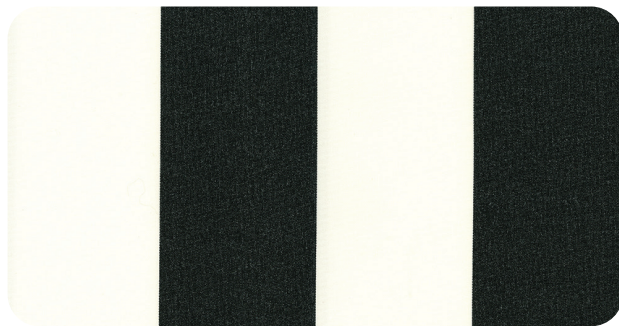
TOPIARY 65 SAND



HOLLY 605 SAND



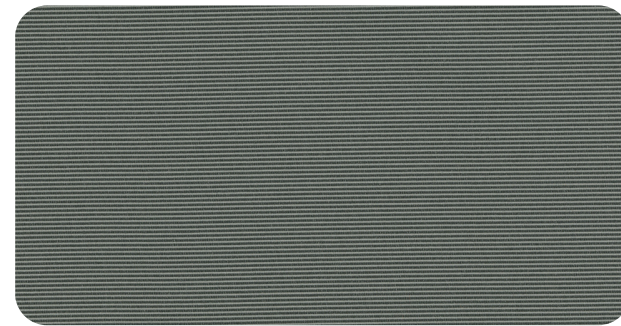
ANGELICA 61 PEARL



LOGGIA 909 MIDNIGHT



WINK 14 POPPY



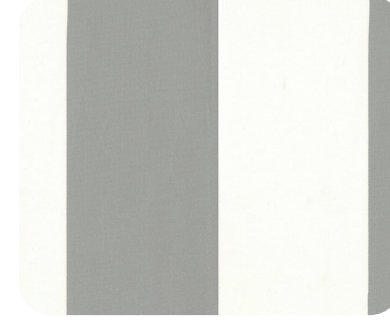
MYRTLE 902 CINDER



WINK 99 STONE



SEQUOIA 61 PEARL



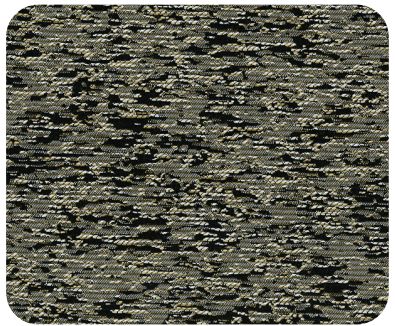
LOGGIA 902 CINDER



MYRTLE 90 ASH



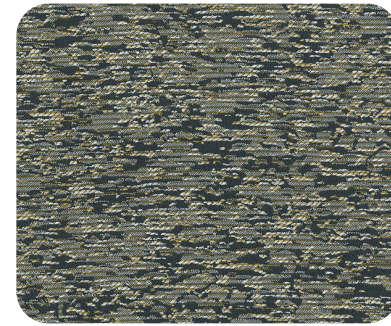
WINK 909 MIDNIGHT



ACACIA 909 MIDNIGHT



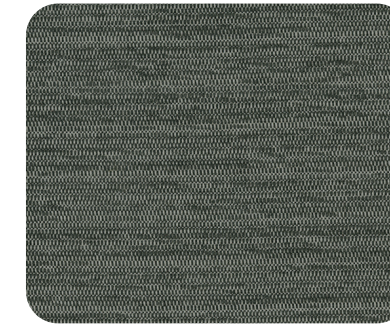
TRINKET 909 MIDNIGHT



ACACIA 99 STONE



JUNIPER 98 CHARCOAL



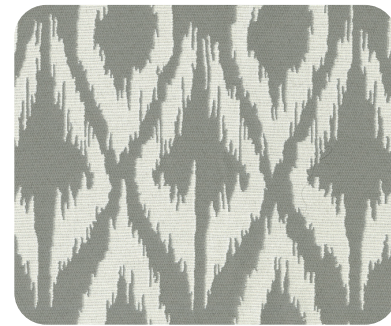
SYCAMORE 99 STONE



TRINKET 902 CINDER



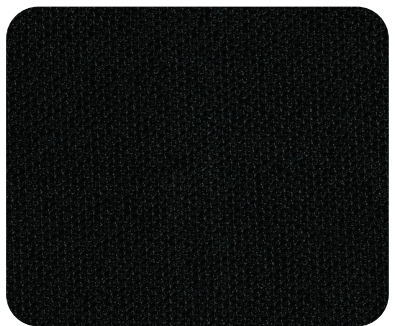
CAPTIVATE 902 GARDEN PATH



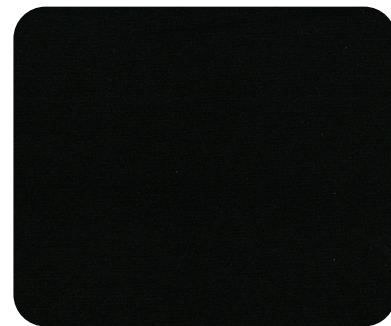
WINK 902 CINDER



SYCAMORE 909 MIDNIGHT



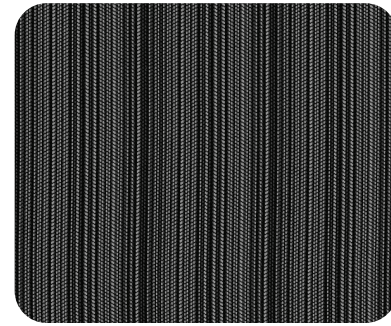
FILBERT 909 MIDNIGHT



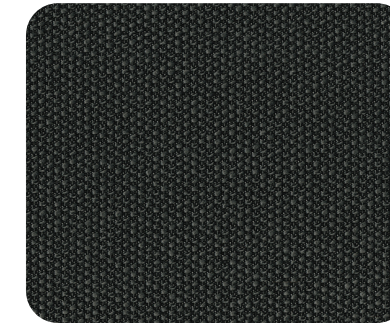
SEQUOIA 909 MIDNIGHT



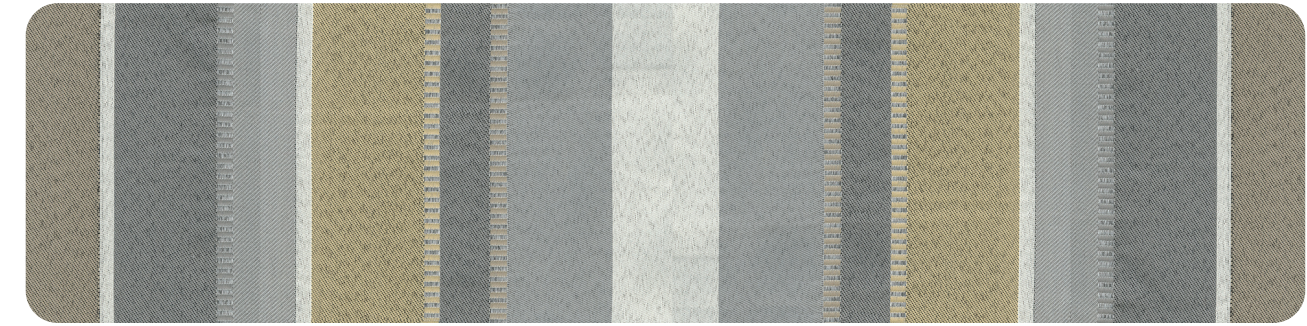
SEQUOIA 908 CHARCOAL



ANGELICA 909 MIDNIGHT



FILBERT 98 CHARCOAL



PORTICO 902 GARDEN PATH