

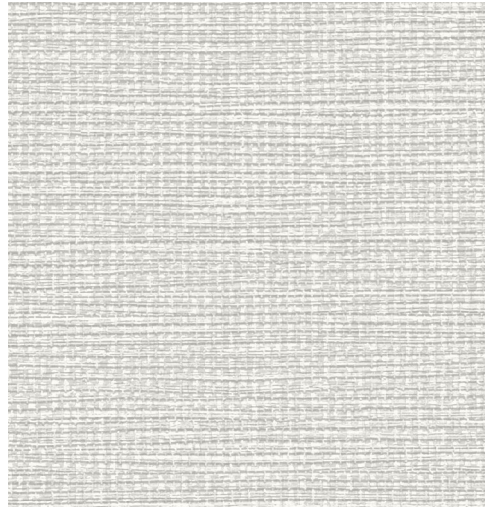
Teahouse Weave



54" / Type II / 20 oz. **LOW VOC** **RECYCLED CONTENT** **AZ53770TW** Fossil

SYMPHONY

Teahouse Weave



AZ53765TW Shadow



AZ53768TW Porcelain



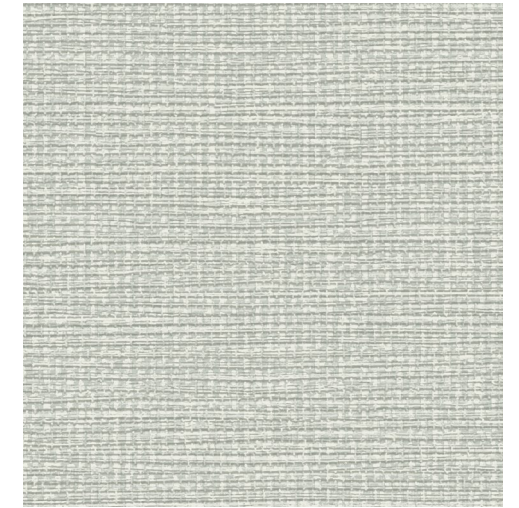
AZ53771TW Alabaster



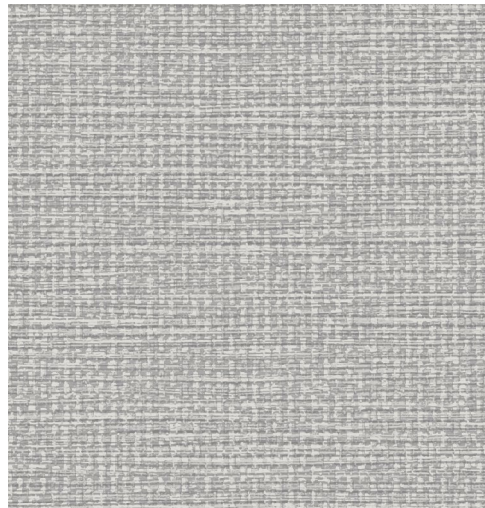
AZ53774TW Parchment



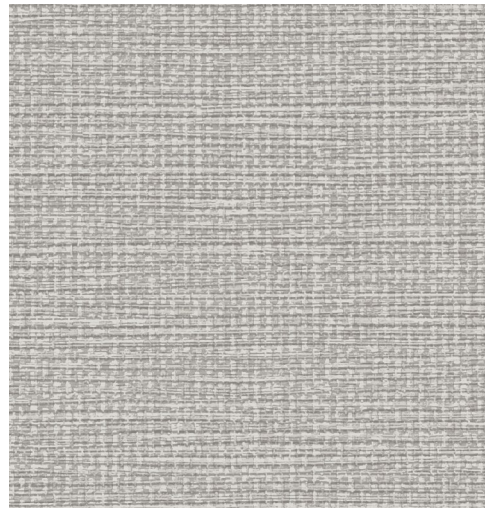
AZ53777TW Chartreuse



AZ53780TW Aquamarine



AZ53766TW Graphite



AZ53769TW Fog



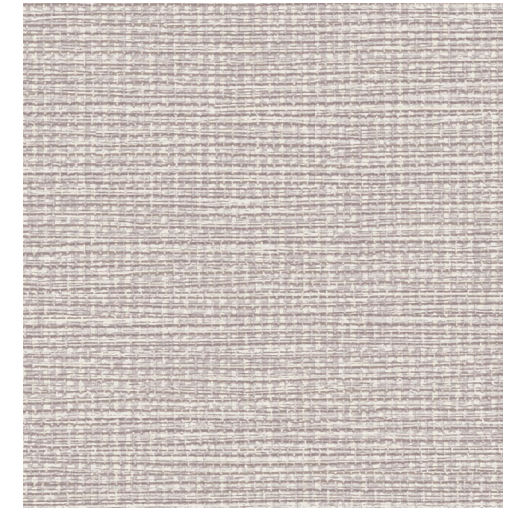
AZ53772TW Oyster



AZ53775TW Flax



AZ53778TW Eucalyptus



AZ53781TW Lilac



AZ53767TW Sable



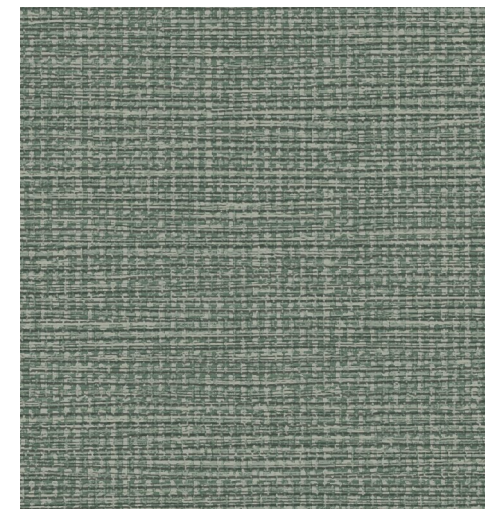
AZ53770TW Fossil



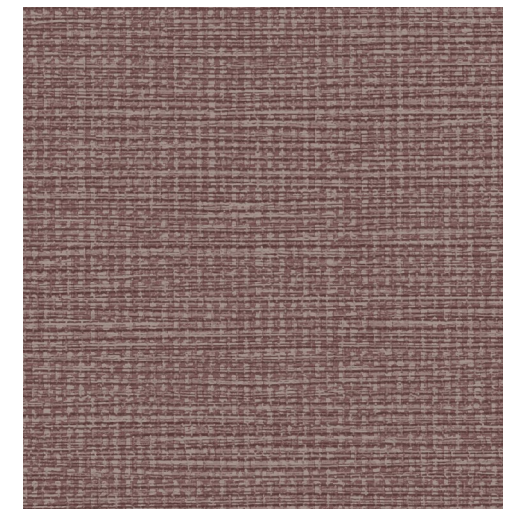
AZ53773TW Mink



AZ53776TW Husk



AZ53779TW Emerald



AZ53782TW Eggplant

Teahouse Weave

54" / Type II / 20 oz. LOW VOC RECYCLED CONTENT



AZ53770TW Fossil

 Render Ready Tiles available

PHYSICAL PROPERTIES

Weight: 20 oz. PLY, 620 G/PLM 13.3 oz. PSY, 451 G/PSM

Backing: Osnaburg

Width: 54 in./137 cm

Match: Reverse Random

Meets or exceeds Federal Specification CCC-W-408D for Type II Wallcovering
Custom colors, weights, and micro venting available.

Product Specifications, Fire Safety & Ratings, Environment & Health
and Warranty is available at [symphonywallcovering.com](https://www.symphonywallcovering.com)

ENVIRONMENTAL

- Low VOC, California section 01350 IAQ
- 10% Recycled content
- Non-Phthalate
- EPD/HPD
- California Prop 65, no labeling required

CLEANABILITY

Inherent anti-microbial protection

Withstands hospital-grade cleaners & disinfectants

Available as a custom with **INVISICAP** | complete **chemical** protection