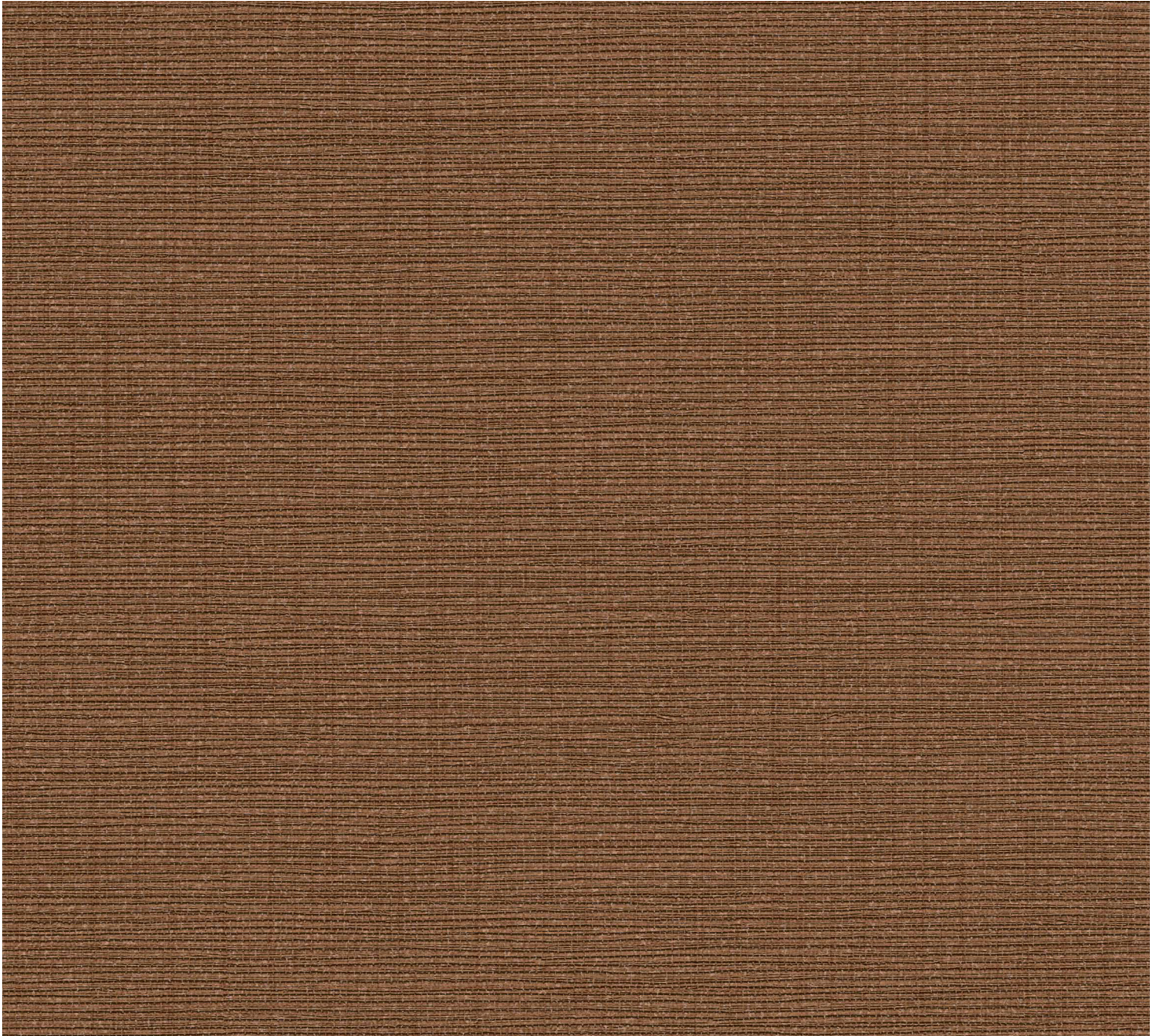


Moondance



54" / Type II / 20 oz. **LOW VOC** **RECYCLED CONTENT** **AZ52365MD** Saint Dominic

SYMPHONY

Moondance



AZ53710MD Hampton Beige



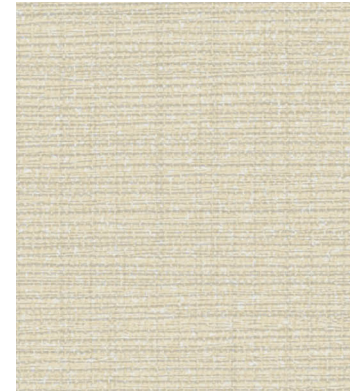
AZ52362MD Ivory Tower



AZ52354MD Veedon Fleece



AZ52350MD Hall of Fame



AZ52862MD Fresh Air



AZ52865MD Beyond Pale



AZ52351MD Into The Mystic



AZ52860MD Copperline



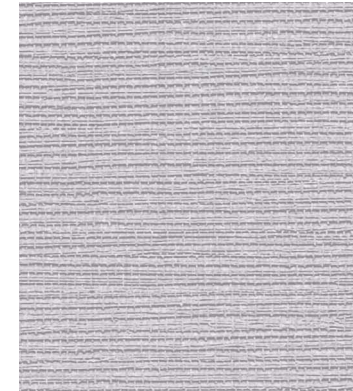
AZ52359MD Caledonia



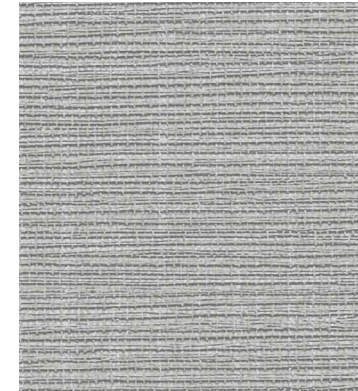
AZ52358MD Whisper n' Hush



AZ52367MD In The Garden



AZ52866MD White Violet



AZ52352MD Wild Breezes



AZ52365MD Saint Dominic



AZ52355MD Irish Linen



AZ52356MD Philosopher's Stone



AZ52863MD Hooray Hazel



AZ52369MD Blue Money



AZ52353MD Fantabulous Night



AZ52861MD Red Hot



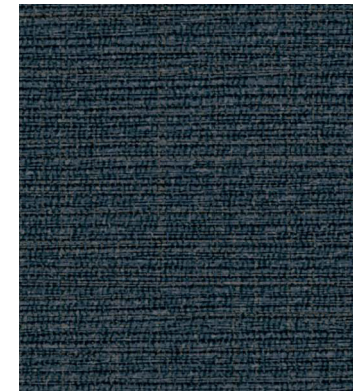
AZ52360MD Belfast Cowboy



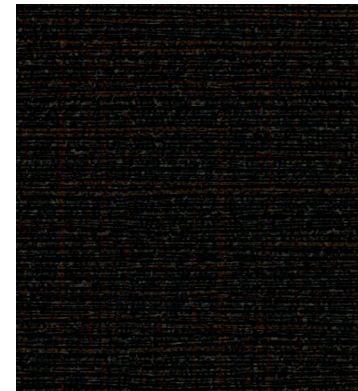
AZ52357MD Transistor Radio



AZ52864MD Rattlin' Bog




AZ52867MD In The Navy



AZ52868MD Black Velvet



AZ52365MD Saint Dominic

 Render Ready Tiles available

PHYSICAL PROPERTIES

Weight: 20 oz. PLY/620 G/PLM 13.3 oz. PSY/451 G/PSM

Backing: Osnaburg **Width:** 54 in./137 cm

Match: Reverse Random

Meets or exceeds Federal Specification CCC-W-408D for Type II Wallcovering
Custom colors, weights, and micro venting available

FIRE SAFETY

Product Specifications, Fire Safety & Ratings, Environment & Health
and Warranty is available at symphonywallcovering.com

ENVIRONMENT & HEALTH

- Low VOC, California section 01350 IAQ
- 10% Recycled content
- Non-Phthalate
- NSF/ANSI 342 certified
- EPD/HPD
- California Prop 65, no labeling required

CLEANABILITY

Inherent anti-microbial protection
Withstands hospital-grade cleaners & disinfectants
Available as a custom with **INVISICAP** complete **chemical** protection