

Tuscan Plaster

BOLTA



Type II / 20 oz. low voc recycled content

Mineral **BB-TU-03**

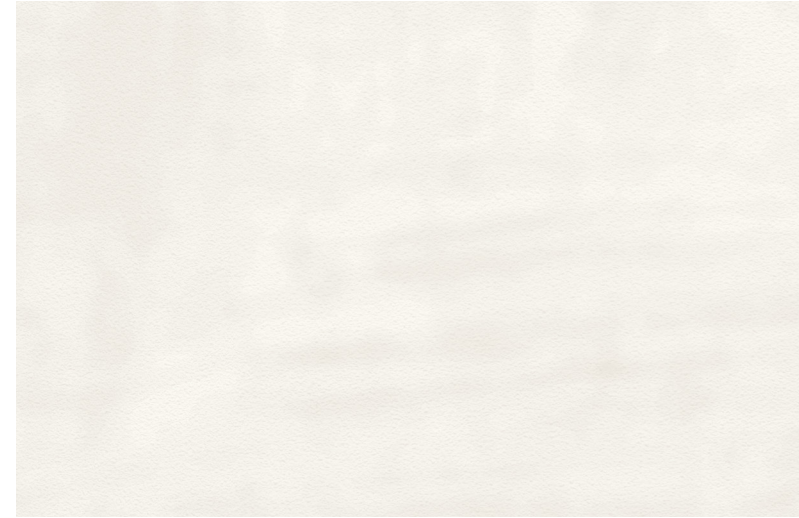
# Tuscan Plaster



Limewash **BB-TU-02**



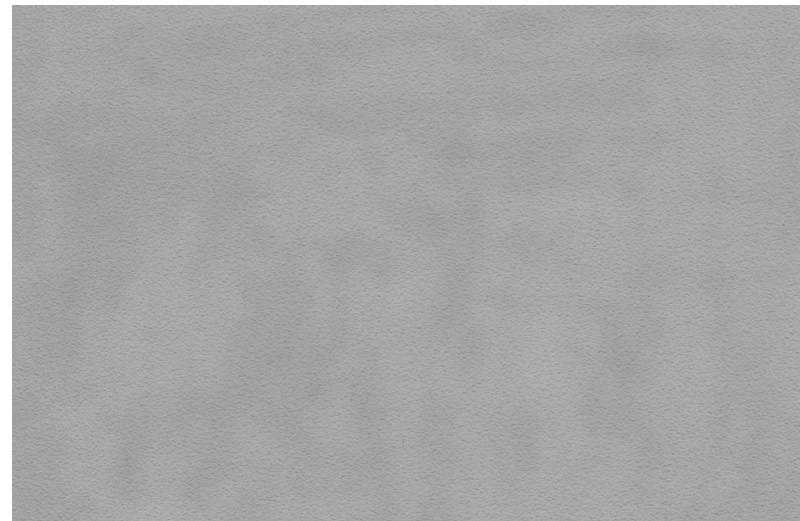
Fossil **BB-TU-01**



Alabaster **BB-TU-05**



Warm Cream **BB-TU-09**



Soapstone **BB-TU-04**



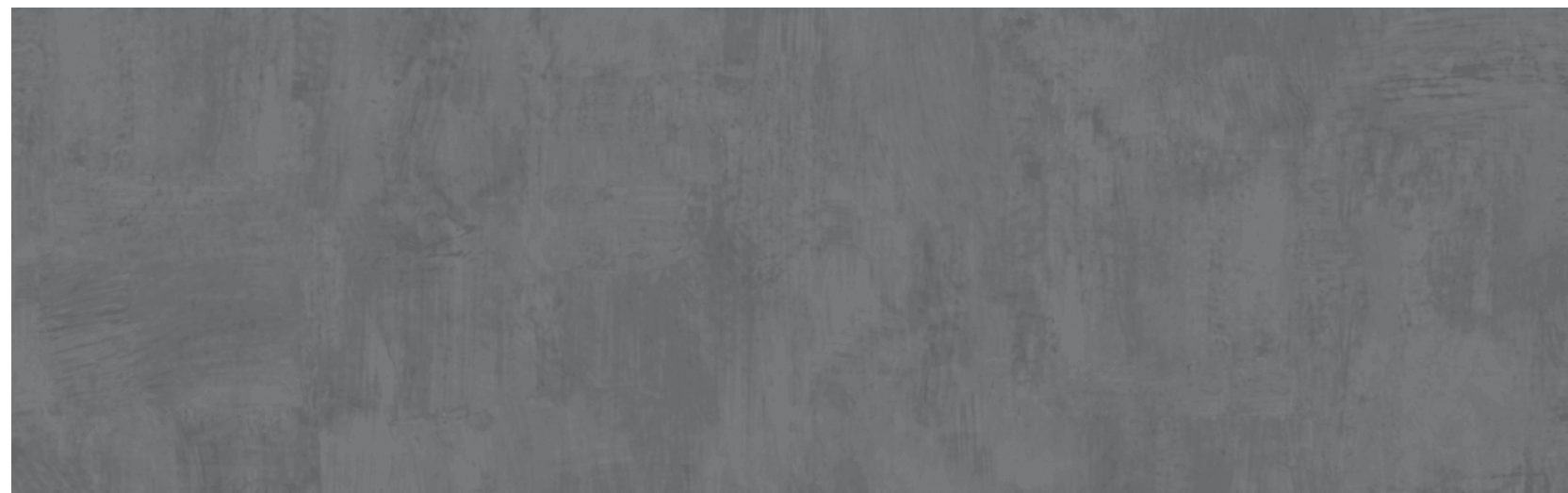
Mineral **BB-TU-03**



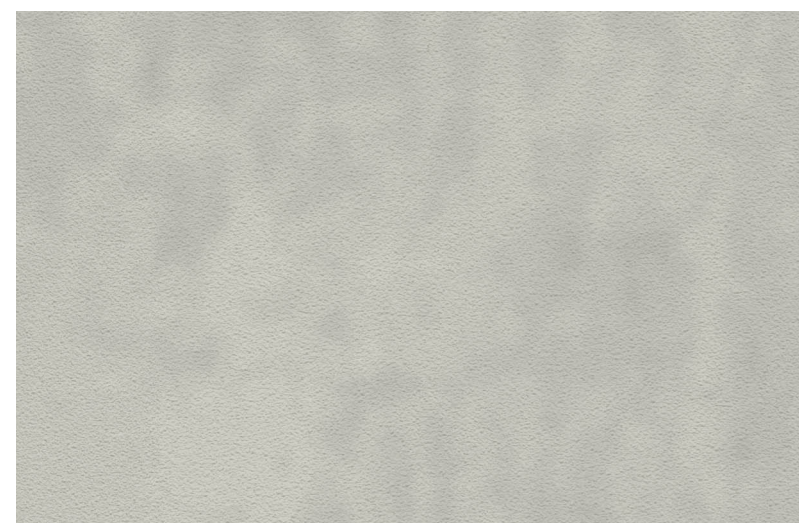
Pumice **BB-TU-06**



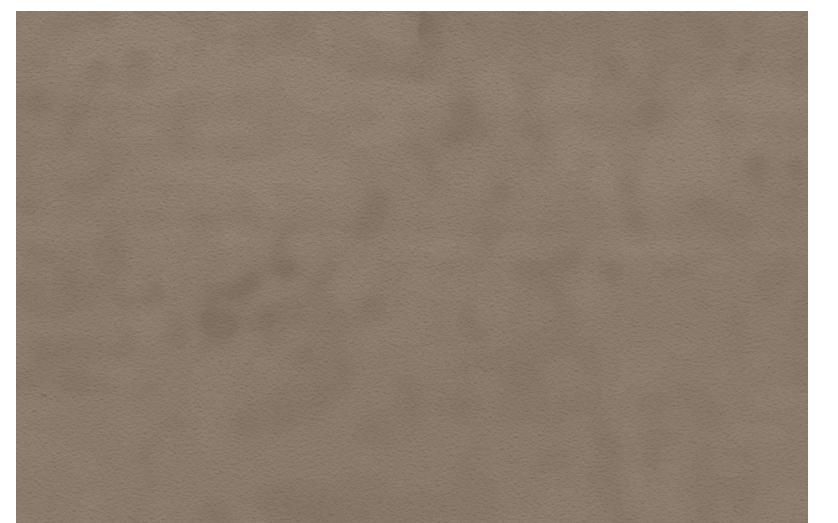
Rustic Clay **BB-TU-10**



Underground **BB-TU-08**



Smoky Sage **BB-TU-07**



Canyon Cocoa **BB-TU-11**



Mineral **BB-TU-03**



 Render Ready Tiles available

Rustic Clay **BB-TU-10**

## Cleanability

Inherent anti-microbial protection  
Withstands hospital-grade cleaners & disinfectants  
Available as a custom with **INVISICAP** | complete **chemical** protection

## Physical Properties

WEIGHT: 20 oz. PLY, 620 G/PLM 13.3 oz. PSY, 451 G/PSM  
BACKING: Osnaburg MATCH: Reverse Random  
WIDTH: 54"/137 cm REPEAT: 24" h x 54" w

Meets or exceeds Federal Specification CCC-W-408D  
Custom colors, weights, and micro venting available

## Environmental

- Low VOC, California section 01350 IAQ
- 10% Recycled content
- Non-Phthalate
- NSF/ANSI 342 certified
- EPD/HPD
- California Prop 65, no labeling required

Product Specifications, Fire Safety & Ratings, Environment & Health and Warranty is available at [www.boltawallcovering.com](http://www.boltawallcovering.com)