

Willow Weave

**BOLTA**



Type II / 20 oz. low voc recycled content

Dove **BB-WW-06**

# Willow Weave



Winter **BB-WW-01**



Misty **BB-WW-05**



Creamy **BB-WW-09**



Dusk **BB-WW-13**



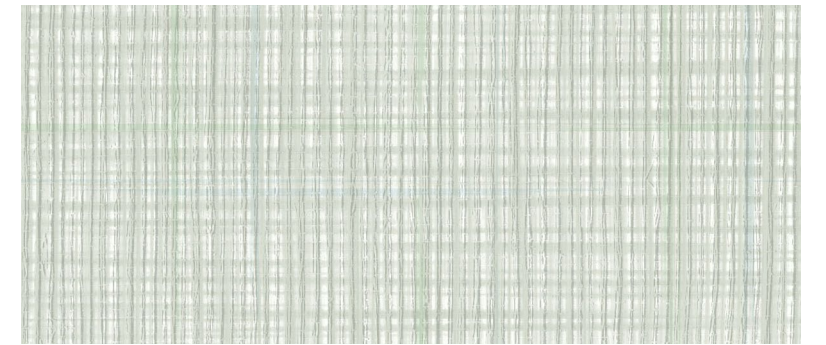
Rain **BB-WW-02**



Dove **BB-WW-06**



Neutral **BB-WW-10**



Fresh **BB-WW-14**



Stormy **BB-WW-03**



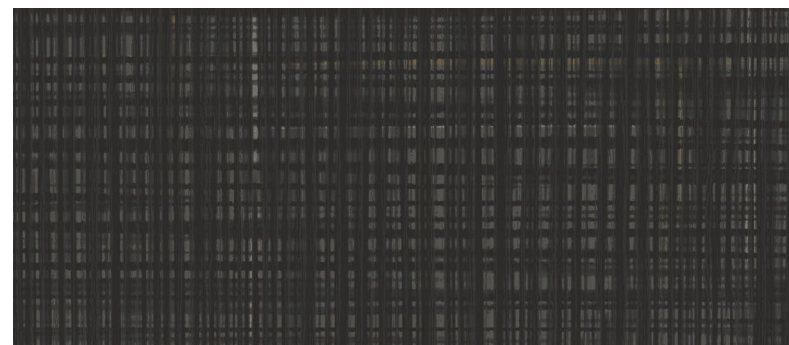
Nest **BB-WW-07**



Buff **BB-WW-11**



Blue Jay **BB-WW-15**



Midnight Glow **BB-WW-04**



Taupe **BB-WW-08**



Mushroom **BB-WW-12**



Deep Ravine **BB-WW-16**



 Render Ready Tiles available

Dove **BB-WW-06**

**Physical Properties**

WEIGHT: 20 oz. PLY, 620 G/PLM    13.3 oz. PSY, 451 G/PSM  
 BACKING: Osnaburg                      MATCH: Reverse Random  
 WIDTH: 52" / 132cm                      REPEAT: 18"h x 54" w

Meets or exceeds Federal Specification CCC-W-408D  
 Custom colors, weights, and micro venting available

**Cleanability**

Inherent anti-microbial protection  
 Withstands hospital-grade cleaners & disinfectants  
 Available as a custom with **INVISICAP** | complete chemical protection

**Environmental**

- Low VOC, California section 01350 IAQ
- 10% Recycled content
- Non-Phthalate
- EPD/HPD
- California Prop 65, no labeling required

Product Specifications, Fire Safety & Ratings, Environment & Health and Warranty is available at [www.boltawallcovering.com](http://www.boltawallcovering.com)