

DOODLE PRODUCT SPECIFICATIONS

Application
Upholstery

Content
100% Polyester

Backing
Premiere™ Embedded Acrylic - Water Based

Finish
Premiere™ Stain Resistant - Water Based

Width
54"

Repeat
16" H, 12" V

General Characteristics

- Abrasion: 200,000+ Double Rubs (ASTM D4157 Wyzenbeek)
- Seam Slippage: Fill: 103.9 lb; Warp: 103.9 lb (ASTM D4034)

Flammability

CA Bulletin 117-2013; UFAC/NFPA-260; IMO A652 (16) 8.2

Cleaning

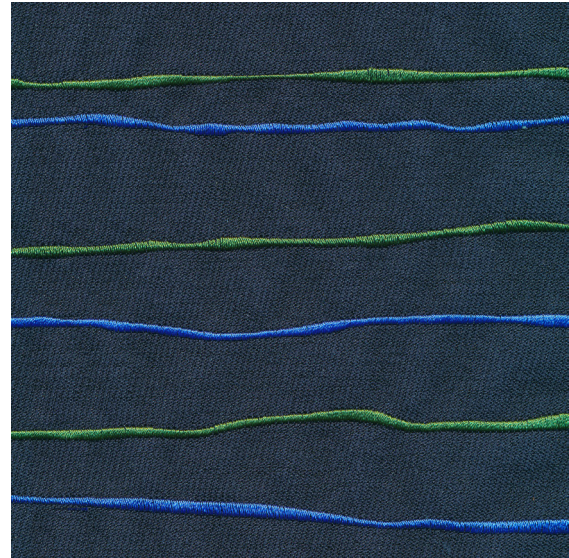
W/S, Bleach (10:1)

Environmental

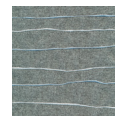
- No added FR/Anti-Bacterial
- PFAS-Free Finish
- Complies with Healthier Hospitals

Country of Origin

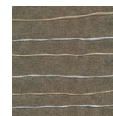
South Korea



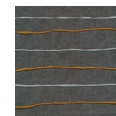
Tide



Horizon



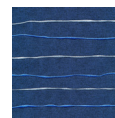
Dune



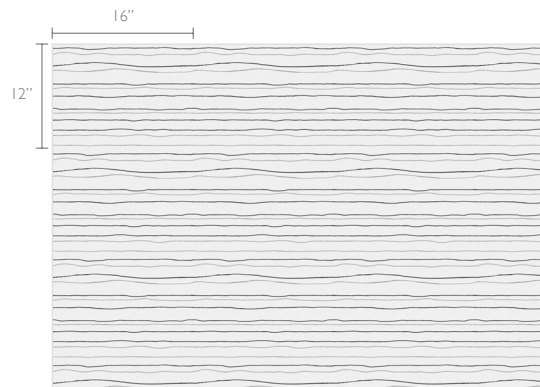
Bluff



Flame



Wave



Technical Repeat

Warranty

Please refer to our Terms of Sales for warranty information.

- Multiple factors affect fabric durability and appearance retention, including end-user application and proper maintenance.

Wyzenbeek results above 100,000 double rubs have not been shown to be a reliable indicator of increased fabric lifespan.



ACT® Registered Certification Marks