

## RECESS PRODUCT SPECIFICATIONS

**Application**  
Upholstery

**Contents**  
88% Polyester, 12% Tekloom® TPE (*Graffiti-Free*®)

**Backing**  
Acrylic

**Width**  
54"

**Repeat**  
N/A

**General Characteristics**

- Abrasion: 1,000,000+ Double Rubs (ASTM D4157 Wyzenbeek)
- Meets all ACT Heavy Duty Performance Guidelines

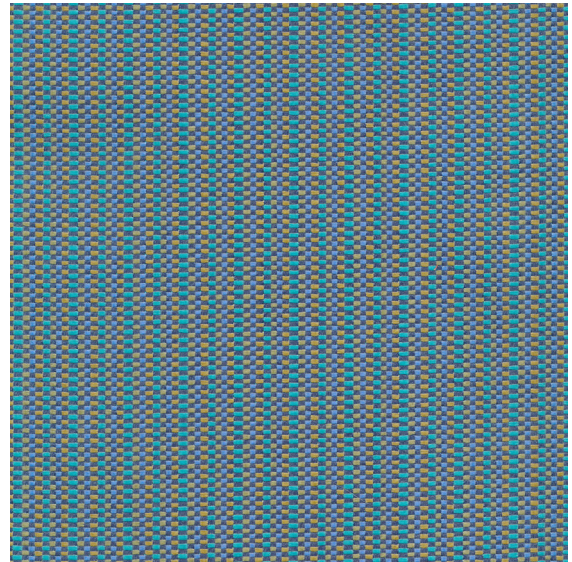
**Flammability**  
CA Bulletin 117-2013; UFAC/NFPA-260; IMO A652 (16) 8.2

**Cleaning**  
W/S, Bleach (10:1)

**Environmental**

- PFAS/DMF Free
- PVC/Phthalate Free
- No added FR/Anti-Bacterial
- Complies with Healthier Hospitals & Cal 01350

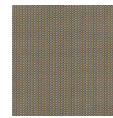
**Country of Origin**  
South Korea



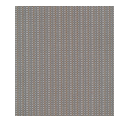
Quarry



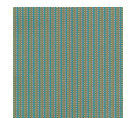
Fresco



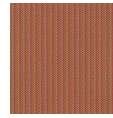
Mahogany



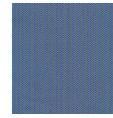
Grain



Meadow



Coral



Harbor

### Warranty

Please refer to our Terms of Sales for warranty information.  
- Multiple factors affect fabric durability and appearance retention, including end-user application and proper maintenance. Wyzenbeek results above 100,000 double rubs have not been shown to be a reliable indicator of increased fabric lifespan.



ACT® Registered Certification Marks