



For Immediate Release

Natural Wonders

The Burch Design Studio presents Canopy and Rivulet, contemporary botanical silhouettes rendered in artistic detail. Minimalistic illustrations reflect the graceful fluidity of the natural world, while an exquisite color palette uses contrast and varying tones to amplify the organic aesthetic. Aided by Crypton's permanent soil and stain protection, Canopy and Rivulet delivers upscale style and superior performance that will flourish for years to come.

Canopy's abstract and whimsical dotted leaf is a breath of fresh air. Twelve enlightened shades featuring Stratus,

Foliage, and Breeze are part of this lively palette.

A floral stripped down to its purest form, Rivulet cuts a striking silhouette. **Rivulet** comes alive in a palette of thirteen botanical and coastal-inspired hues.

For inspiration, editorial imagery, and videos of this collection please visit Burchfolio (<https://burchfolio.com>)

Burchfolio
GET INSPIRED.

About Burch

What started out in 1904 as a small upholstery shop in downtown Grand Rapids, Michigan has grown into a worldwide brand synonymous with innovative products that provide quality and value. Burch offers an extensive selection of materials for coordinated application in the hospitality, senior living, corporate and healthcare markets. Our progressive collections of High Performance Seating, Crypton, Vinyl, PVC Free Polyurethane,

Silicone, and Vertical Surface Fabrics are developed with our customer's needs in mind. Our in-house design team strives to develop innovative products to meet the ever changing demands of our industry, whether it be the latest color trends or providing solutions for the latest technical challenges. Our entire offering is inventoried in multiple warehouses throughout North America, allowing for exceptional delivery times.

For Press Information Contact

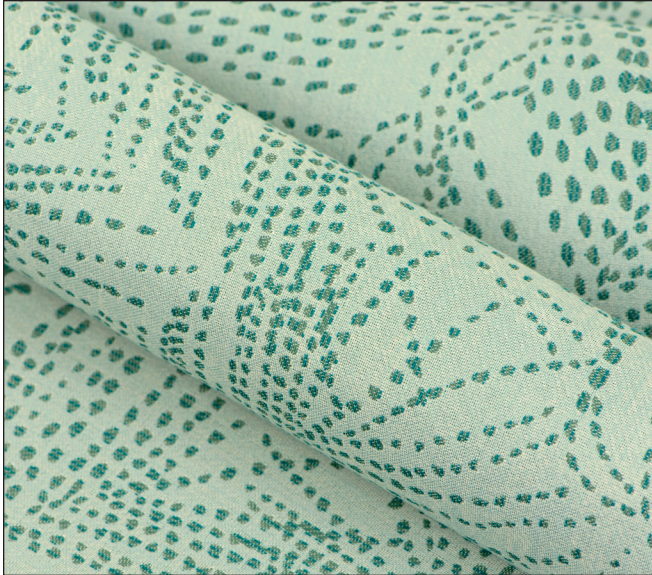
Laura Back
616.698.2800 x219 laurab@burchfabrics.com

Burch

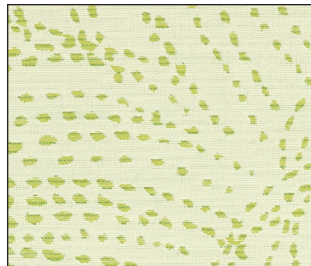
Canopy

- 12 Colorways
- Bleach Cleanable
- Crypton® Green Super Fabric
- Free of FR Chemicals / CAL AB 2998 Compliant

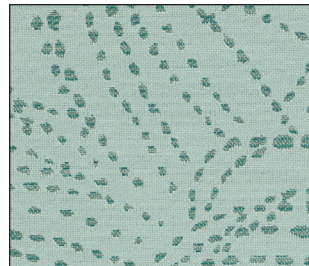
Canopy's abstract and whimsical dotted leaf is a breath of fresh air. Twelve enlightened shades featuring Stratus, Foliage, and Breeze are part of this lively palette.



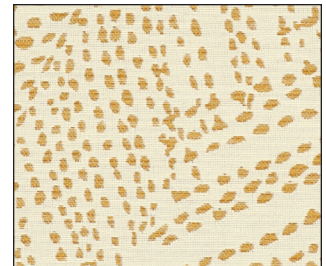
Cream 1012160



Foliage 1012167



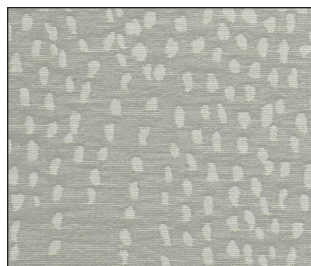
Breeze 1012166



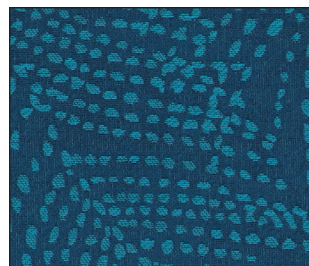
Honey 1012168



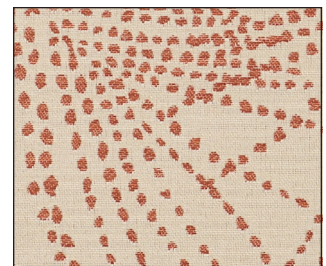
Driftwood 1012159



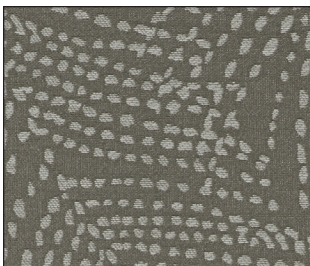
Stratus 1012161



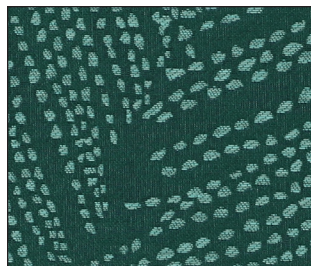
Azure 1012164



Sienna 1012169



Boulder 1012162



Aquamarine 1012165



Sapphire 1012163



Sangria 1012170

Fabric is not shown to scale.

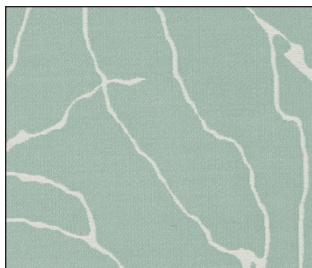
Rivulet

- 13 Colorways
- Bleach Cleanable
- Crypton® Green Super Fabric
- Free of FR Chemicals / CAL AB 2998 Compliant

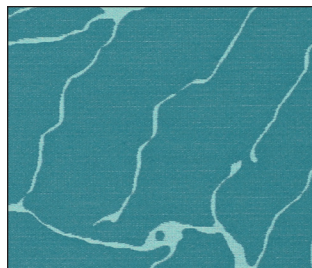
A floral stripped down to its purest form, Rivulet cuts a striking silhouette. Rivulet comes alive in a palette of thirteen botanical and coastal-inspired hues.



1012182 Dusty Rose



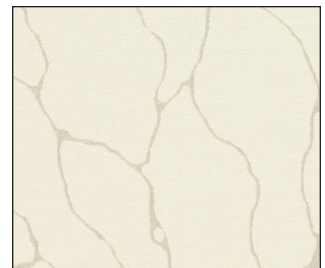
1012179 Mist



1012176 Cayman



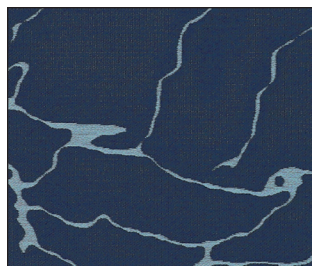
1012172 Beach



1012171 Quartz



1012178 Seafoam



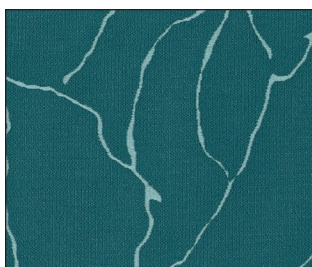
1012175 Hudson



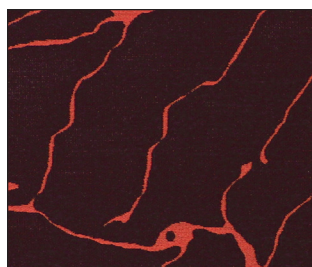
1012180 Goldenrod



1012173 Fossil



1012177 Peacock



1012183 Magma



1012181 Clay



1012174 Marble

Fabric is not shown to scale.