



Burchfolio

# Dash

Performance Woven Fabric

Crypton® Super Fabric

16 Colorways

Bleach Cleanable

Free of Added FR Chemicals / PFAS Free

With sleek lines and a cloudlike texture Dash is the perfect mashup of cozy and contemporary. Dash's ethereal array of sixteen shades correlates perfectly with today's interiors.

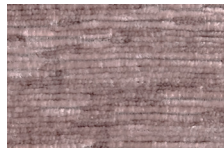
With Crypton's superior soil and stain protection, Dash will continue to leave their long-lasting mark on stylish spaces for years to come.



**Triton** 1012363



**Space** 1012364



**Amethyst** 1012365



**Canyon** 1012366



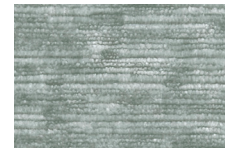
**Soleil** 1012367



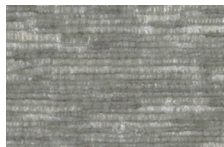
**Rosemary** 1012368



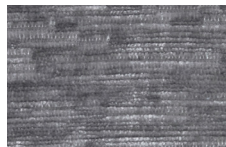
**Celadon** 1012369



**Bayou** 1012370



**Mineral** 1012371



**Fog** 1012372



**Morel** 1012373



**Sable** 1012374



**Pigeon** 1012375



**Muslin** 1012376



**Bone** 1012377



**Cotton** 1012378



Burchfolio

## Fleck

---

Performance Woven Fabric

Crypton® Super Fabric

14 Colorways

Bleach Cleanable

Free of Added FR Chemicals / PFAS Free



A classic tweed never goes out of style. Fleck is perfectly balanced, abundantly textured, and beautifully colored in fourteen fresh shades.

With Crypton's superior soil and stain protection, Fleck will continue to leave their long-lasting mark on stylish spaces for years to come.



**Powder** 1012337



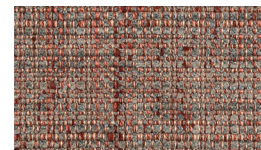
**Cashmere** 1012338



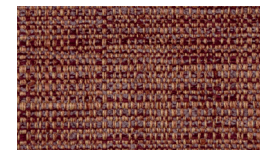
**Marmalade** 1012332



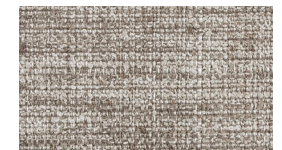
**Toasted** 1012340



**Vermillion** 1012334



**Raspberry** 1012333



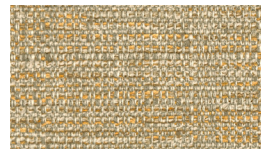
**Thunder** 1012336



**Magnolia** 1012339



**Custard** 1012330



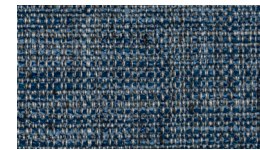
**Honeycomb** 1012331



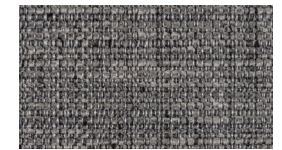
**Mantis** 1012329



**Surf** 1012328



**Sapphire** 1012327



**Chalice** 1012335

Burchfolio

## Hatch

---

Performance Woven Fabric

Crypton® Super Fabric

8 Colorways

Bleach Cleanable

Free of Added FR Chemicals / PFAS Free

Hatch exudes charm with a nuanced approach to color blending. This palette of eight multifaceted shades cohesively connects colors within a space.

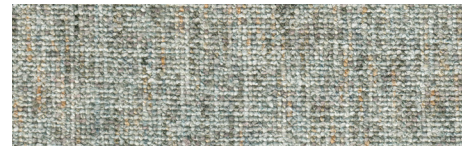
With Crypton's superior soil and stain protection, Hatch will continue to leave their long-lasting mark on stylish spaces for years to come.



**Ecru** 1012345



**Opal** 1012346



**Oasis** 1012341



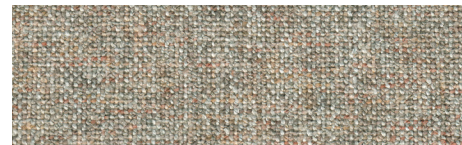
**Duckweed** 1012342



**Nectar** 1012343



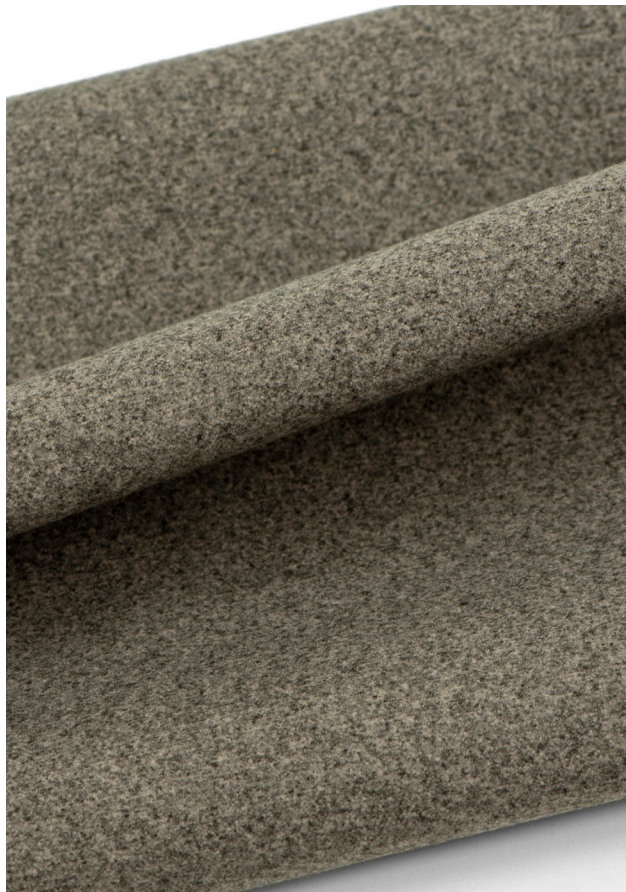
**Peony** 1012344



**Cardigan** 1012347



**Gothic** 1012348



Burchfolio

## Matte

Performance Woven Fabric

Crypton® Super Fabric

16 Colorways

Bleach Cleanable

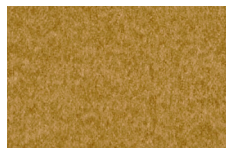
Free of Added FR Chemicals / PFAS Free

An updated take on a felted "wool" Matte makes a sophisticated statement. Matte is available in sixteen hues emphasizing classics like Chrome, Oxford, and Garnet.

With Crypton's superior soil and stain protection, Matte will continue to leave their long-lasting mark on stylish spaces for years to come.



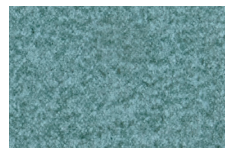
**Buttercream** 1012359



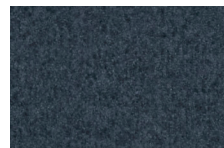
**Gold Rush** 1012352



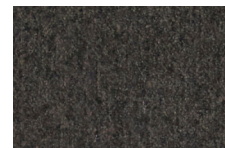
**Celeste** 1012350



**Seabreeze** 1012389



**Gemini** 1012354



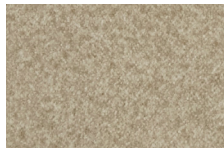
**Coffee** 1012362



**Mink** 1012361



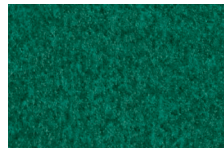
**Antique** 1012358



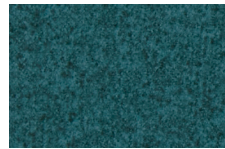
**Cremeni** 1012360



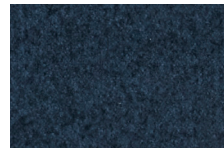
**Clover** 1012390



**Kelp** 1012351



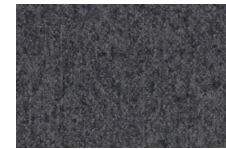
**Equator** 1012349



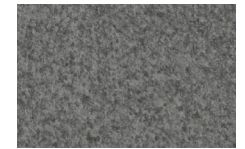
**Oxford** 1012355



**Garnet** 1012353



**Storm** 1012356



**Chrome** 1012357