

zintra[®]
PREMIUM MATERIAL

Make the impossible, possible.

Individually crafted by our designers, the new Zintra collection of Premium Material prints recreate the striking aesthetics of architectural finishes with breathtaking realism and superior acoustics.

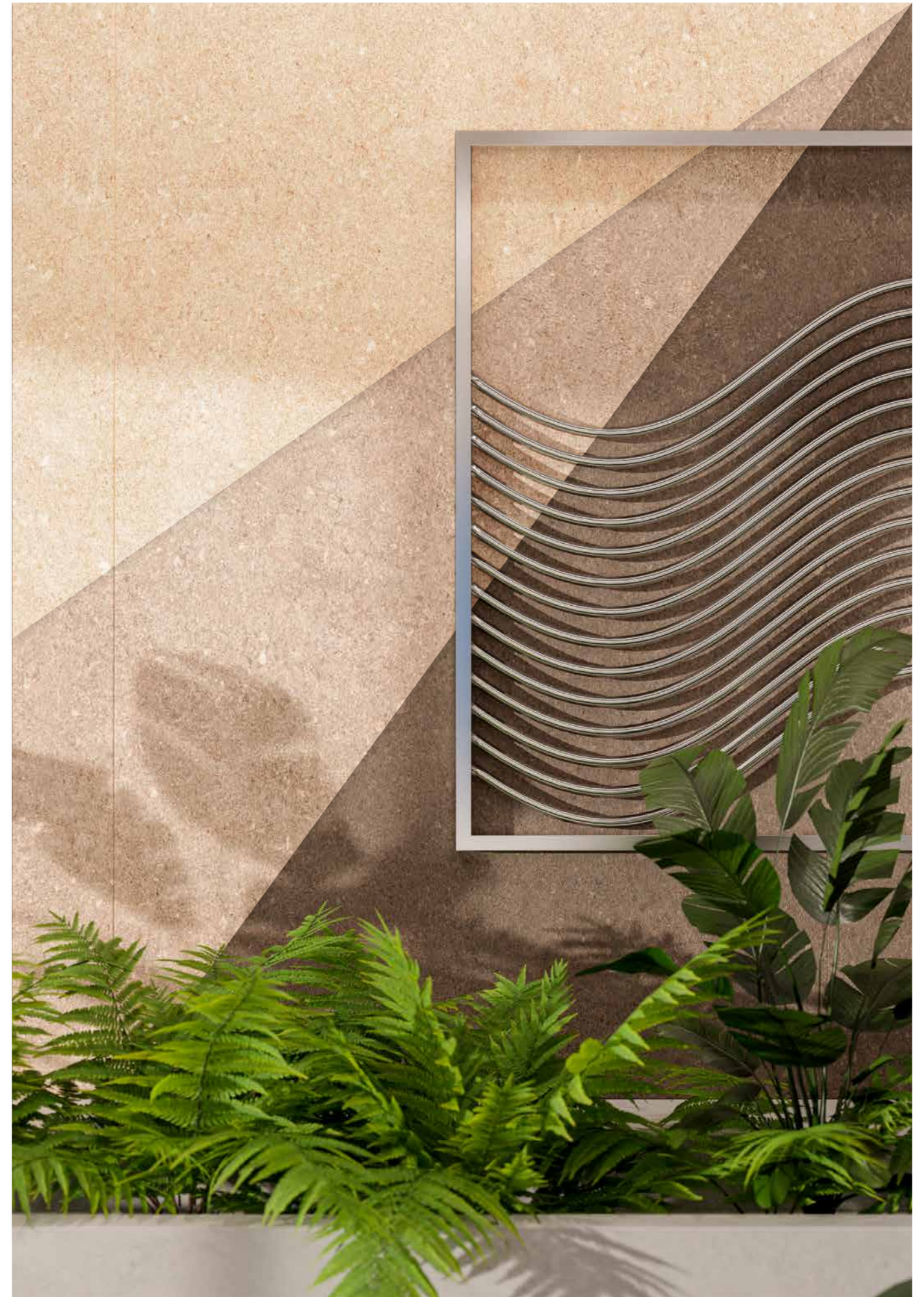
The 1/2" (12mm) Zintra base color has been perfectly paired to add a sense of depth, bringing crispness and clarity that's second to none.

Lightweight, versatile and durable, Premium Material adds a world of application possibilities so you can create exceptional, sustainable spaces that look as beautiful as they sound.





4. Product: Zintra Premium Material Shale | Color: Light + Medium + Dark



Product: Zintra Premium Material Trevatine | Color: Light + Medium + Dark



6. Product: Zintra Premium Material Raku | Color: Bone + Luster + Jade

ZINTRA PREMIUM MATERIAL 7.

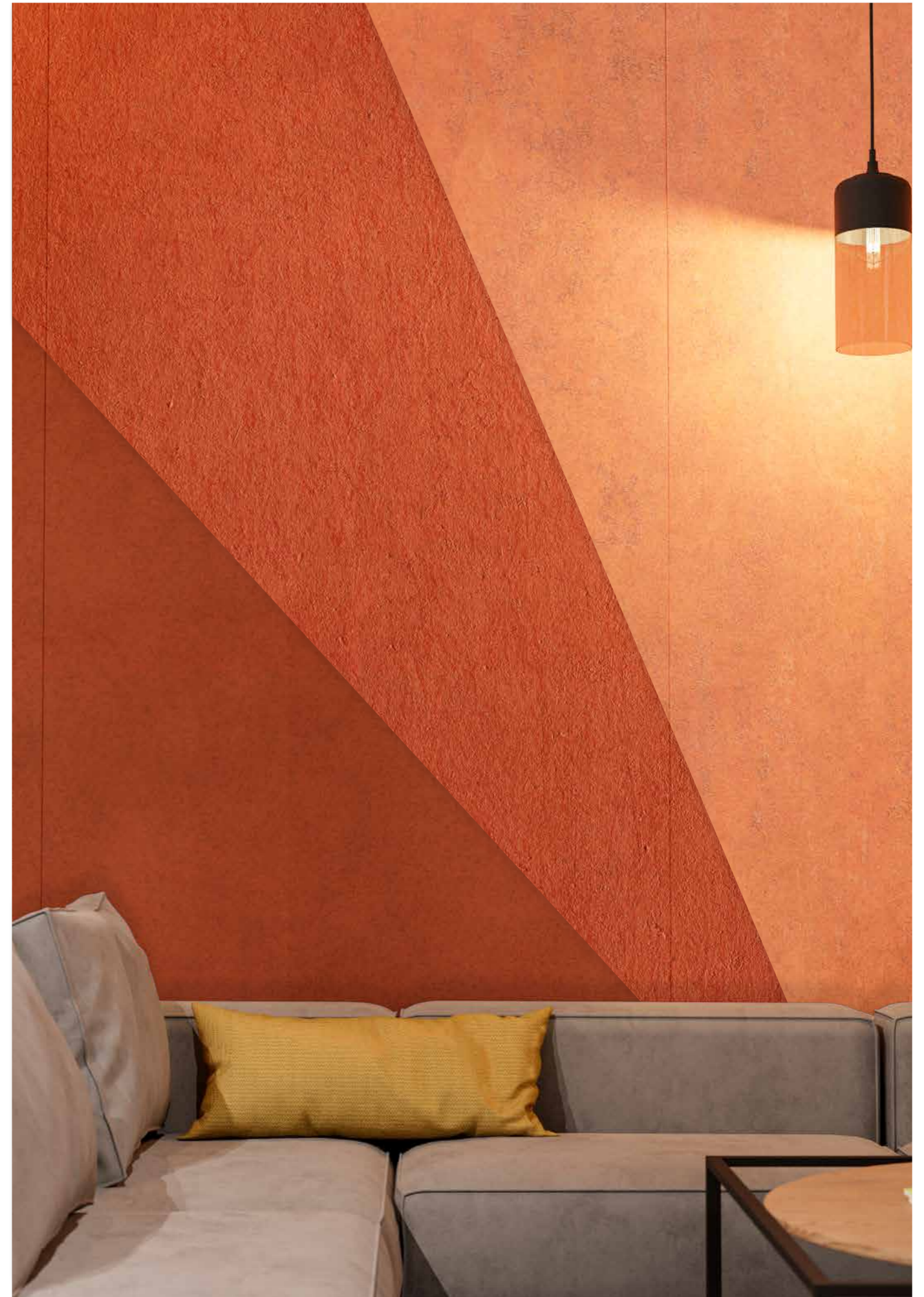


8. Product: Zintra Premium Material Trevatine | Color: Light

ZINTRA PREMIUM MATERIAL 9.



10. Product: Zintra Premium Material Terrazzo | Color: Light + Medium + Dark



Product: Zintra Premium Material Terracotta | Color: Antique + Mission + Sun Bleached



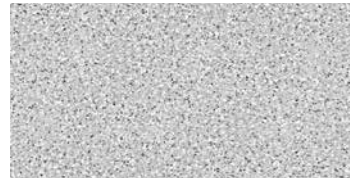
12. Product: Zintra Premium Material Concrete | Color: Cast + Polished + Dark Tint

ZINTRA PREMIUM MATERIAL 13.

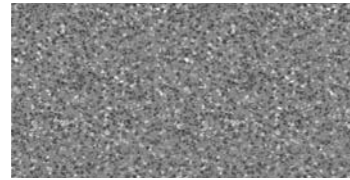
Available in 18 designs

BASE: The base color has been expertly matched to complement your selection, ensuring minimal edge contrast and seamless integration. Providing a clean, crisp aesthetic with the most accurate color matching. Available in 1/2" (12mm) Zintra.

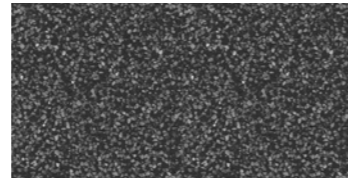
CHOOSE YOUR MATERIAL PRINT: Proprietary Zintra created designs for absolute realism. There are 18 material finishes to choose from.



TERRAZZO LIGHT



TERRAZZO MEDIUM



TERRAZZO DARK



TRAVERTINE LIGHT



TRAVERTINE MEDIUM



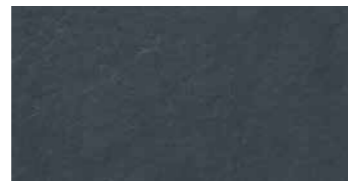
TRAVERTINE DARK



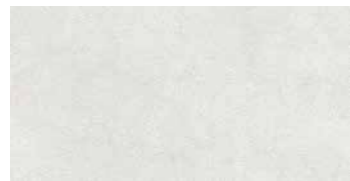
SHALE LIGHT



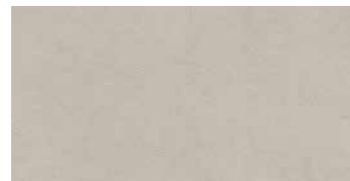
SHALE MEDIUM



SHALE DARK



RAKU BONE



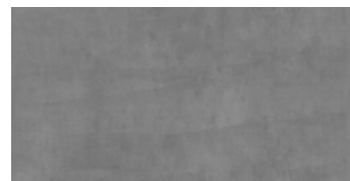
RAKU LUSTER



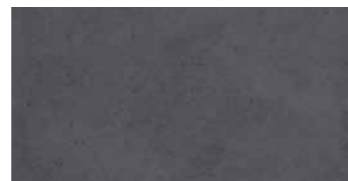
RAKU JADE



CONCRETE CAST



CONCRETE POLISHED



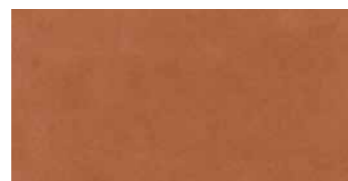
CONCRETE DARK TINT



TERRACOTTA SUN BLEACHED



TERRACOTTA MISSION



TERRACOTTA ANTIQUE

Specifications

Width	48" (1219mm)
Height	108" (2743mm)
NRC Rating	NRC 0.45 - 0.95
Material	Zintra Acoustic Panel - 100% Solution Dyed (Color Through) Polyester
PET Thickness	1/2" (12mm)
Application	Indoor Only
Premium Material Print	18
Installation	Check out the installation guide on our website
Assembly Required	Yes
Fire Rating	ASTM-E84 - Class A classification AS ISO 9705 - 2003 - Group 1 classification EN-13501 - B-s2-d0 classification
Lightfastness	AATCC 16.3, Option 3: Panel color change at 40AFU is 4.5
Temperature	Maximum temperature exposure is 240°F (115°C)
Moisture Absorption	Polyester fibre when exposed to an atmosphere of 120°F (49°C) at 90% relative humidity for four days showed moisture absorption of less than 0.03% by weight
VOC Testing	Standard Method Version 1.2 for CDPH 01350: PASS for all testing scenarios
Care Instructions	Remove spills immediately using damp, clean cloth. Dab Zintra with a clean, soft white cloth dampened with a mild solution of liquid detergent and warm water. Repeat using only clean water, then pat dry with a lint free cloth. Avoid using wax polishes, solvents or concentrated abrasives. For more difficult stains, dampen a soft white cloth with a solution of household bleach (10% bleach / 90% water). Dab gently. Repeat using only a clean, water dampened cloth to remove bleach concentration then pat dry with a lint free cloth. Always test in an inconspicuous area first. If care instructions don't deliver the expected results, cease cleaning method immediately and contact Baresque for assistance.
Made in	USA
Warranty	5 years

Design: Zintra Premium Material Shale | Color: Medium



zintra[®]

PREMIUM MATERIAL

+1 855 922 7377

hello@zintraacoustic.com

zintraacoustic.com