

# SYMPHONY

Sliding Light

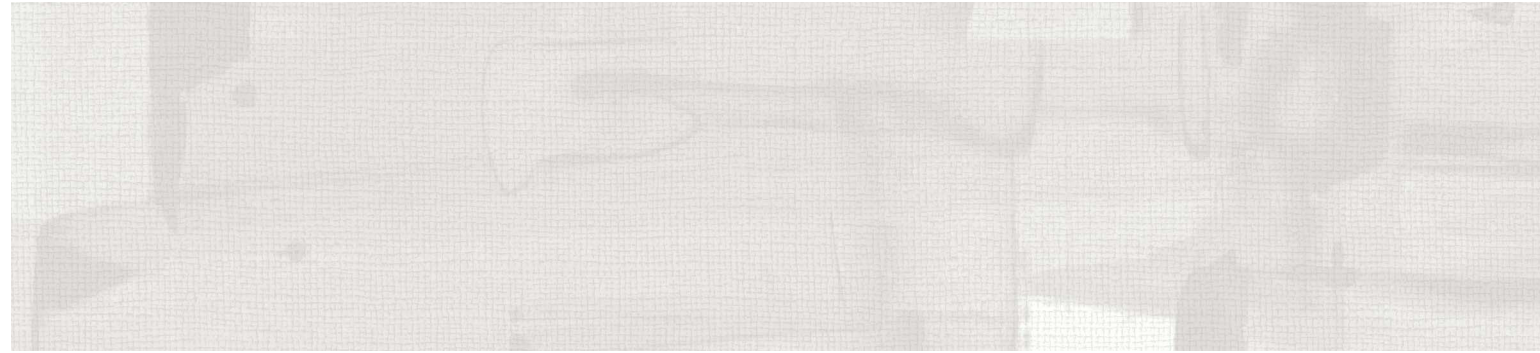


54" / Type II / 20 oz. **LOW VOC** **RECYCLED CONTENT**

**AZ53790SL** Whitewash

# Sliding Light

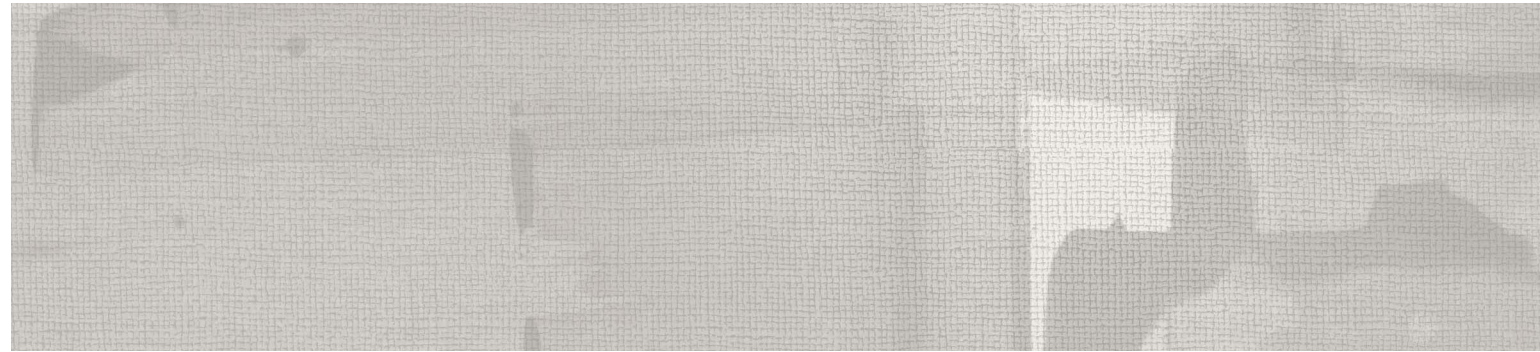
Roll cursor over swatch to see the colorway installed



**AZ53790SL** Whitewash



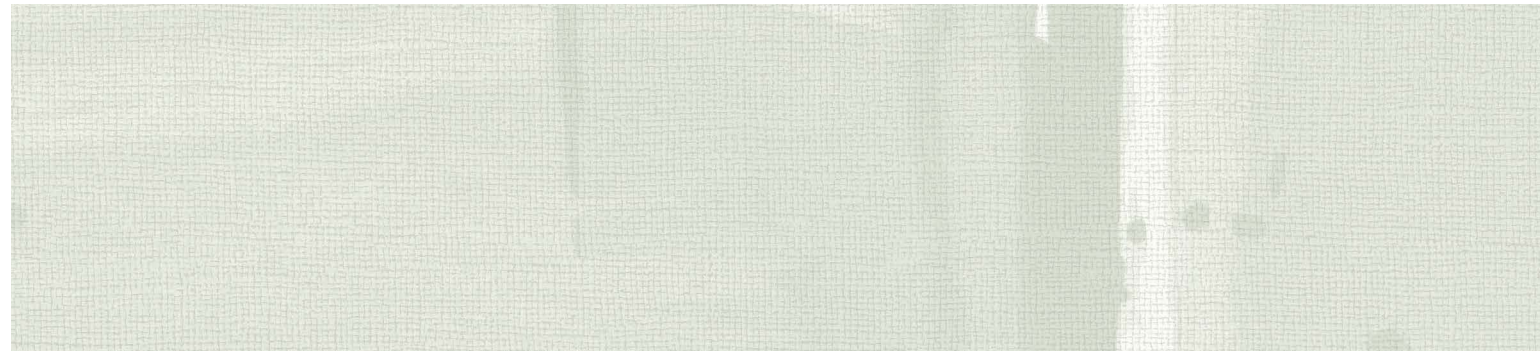
**AZ53794SL** Chiffon Blush



**AZ53791SL** Soft Shadow



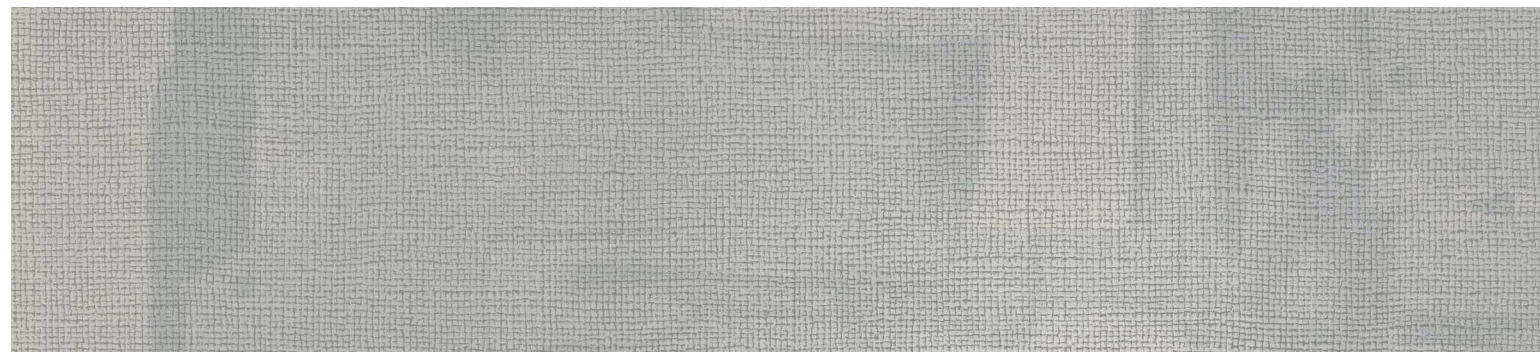
**AZ53795SL** Touch of Gold



**AZ53792SL** Cast Glass



**AZ53796SL** Warm Layers



**AZ53793SL** Swedish Fog



**AZ53797SL** Melted

# Sliding Light

54" / Type II / 20 oz. **LOW VOC** **RECYCLED CONTENT**



**AZ53790SL** Whitewash

## PHYSICAL PROPERTIES

**Weight:** 20 oz. PLY, 620 G/PLM 13.3 oz. PSY, 451 G/PSM

**Backing:** Osnaburg

**Width:** 54 in./137 cm

**Match:** Reverse Random

Meets or exceeds Federal Specification CCC-W-408D for Type II Wallcovering  
Custom colours, weights, and micro venting available.

## ENVIRONMENTAL

- Low VOC, California section 01350 IAQ
- 10% Recycled content
- Non-Phthalate
- NSF/ANSI 342 certified
- EPD/HPD
- California Prop 65, no labeling required

Product Specifications, Fire Safety & Ratings, Environment & Health and Warranty is available at [symphonywallcovering.com](https://www.symphonywallcovering.com)



 Render Ready Tiles available

**AZ53797SL** Melted

## CLEANABILITY

Inherent anti-microbial protection

Withstands hospital-grade cleaners & disinfectants

Available as a custom with **INVISICAP** | complete **chemical** protection