



中国认可
国际互认
检测
TESTING
CNAS L5516

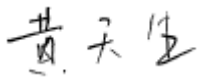
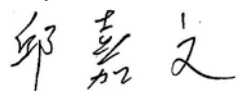

Report No.报告编号:
SNB180105015001B-R1

UN38.3 检测报告

UN38.3 Test Report

产品名称:	锂离子电池 852740PL
Name of Products:	Li-ion Battery 852740PL
委托单位:	深圳市康贝特电子有限公司
Client:	Shenzhen Keep Better Tech Electronics Co., Ltd
制造商:	深圳市康贝特电子有限公司
Manufacturer:	Shenzhen Keep Better Tech Electronics Co., Ltd
签发日期:	2019-12-18
Date of issue:	

深圳市北测检测技术有限公司
Shenzhen NTEK Testing Technology Co., Ltd.

Manufacturer 制造商	Shenzhen Keep Better Tech Electronics Co., Ltd 深圳市康贝特电子有限公司	
Address of manufacturer 制造商地址	16 Building, Fuyuan Industrial Park, 28 Qiaotang Road, Fuyong Town, Baoan District, Shenzhen China 深圳市宝安区福永桥塘路 28 号福源工业区 16 栋	
Factory 工厂	Shenzhen Keep Better Tech Electronics Co., Ltd 深圳市康贝特电子有限公司	
Address of factory 工厂地址	16 Building, Fuyuan Industrial Park, 28 Qiaotang Road, Fuyong Town, Baoan District, Shenzhen China 深圳市宝安区福永桥塘路 28 号福源工业区 16 栋	
Name of Products 产品名称	Li-ion Battery 锂离子电池	
Model/type reference 型号	852740PL	
Trade Mark 商标	-	
Tested according to 测试依据: Recommendations on the TRANSPORT OF DANGEROUS GOODS, Manual of Test and Criteria, PART III, section 38.3 Lithium metal and lithium ion batteries, the sixth revised edition (ST/SG/AC.10/11/Rev.6). 联合国《关于危险货物运输的建议书, 试验和标准手册》, 第三部分, 38.3 节锂金属和锂离子电池要求, 第六修订版 (ST/SG/AC.10/11/Rev.6)		
Tests performed 测试项目: Test T.1: Altitude simulation 试验 T.1: 高度模拟 Test T.5: External short circuit 试验 T.5: 外部短路 Test T.2: Thermal Test 试验 T.2: 温度试验 Test T.6: Crush 试验 T.6: 挤压 Test T.3: Vibration 试验 T.3: 振动 Test T.7: Overcharge 试验 T.7: 过度充电 Test T.4: Shock 试验 T.4: 冲击 Test T.8: Forced discharge 试验 T.8: 强制放电		
Test Conclusion 试验结论: The Li-ion Battery submitted by Shenzhen Keep Better Tech Electronics Co., Ltd is tested according to the <i>Recommendations on the TRANSPORT OF DANGEROUS GOODS, Manual of Test and Criteria, PART III, section 38.3 Lithium metal and lithium ion batteries, the sixth revised edition (ST/SG/AC.10/11/Rev.6)</i> . Test results: PASS 由深圳市康贝特电子有限公司提交的锂离子电池按照联合国《关于危险货物运输的建议书, 试验和标准手册》, 第三部分, 38.3 节锂金属和锂离子电池要求, 第六修订版 (ST/SG/AC.10/11/Rev.6)进行测试。 测试结果: 合格		
Tested by: 主检人: 	Reviewed by: 审核人: 	Approved by: 批准人:  Seal of NTEK 报告单位 (盖章)

General product information 通用产品信息:			
Nominal Voltage 标称电压	3.7V	Rated Capacity 额定容量	850mAh (3.145Wh)
Standard Charging Current 标准充电电流	170mA	Max. Continuous Charging Current 最大充电电流	850mA
Limited Charging Voltage 充电限制电压	4.2V	Cut-Off Voltage 放电截止电压	2.5V
Standard Continuous Discharge Current 标准放电电流	170mA	Max. Continuous Discharge Current 最大放电电流	850mA
Number of cells 电芯数量	Single cell 单电芯	Rated Capacity of Cell 电芯额定容量	850mAh
Cell's Max. Continuous Discharge Current 电芯最大放电电流	850mA	Appearance 外观	Silvery and Prismatic 棱柱形、银色
Classification 类别	Small Lithium ion Cells 小型锂离子电池	Size (T×W×L) 尺寸	8.5×27.0×40.5mm

Date of receipt of test item 接收日期	2018-01-06	Completion Date 完成日期	2018-01-31
--------------------------------------	------------	-------------------------	------------

<p>Remarks 备注说明:</p> <p>Batteries of A1#-A10# are fully charged at first cycle; Component cells of A11#-A15# at 50% charged of the design rated capacity at first cycle; Batteries of A16#-A19# are fully charged at first cycle; Batteries of A20#-A23# are fully charged after 50 cycles; Component cells of A24#-A33# are fully discharged at first cycle; Component cells of A34#-A43# are fully discharged after 50 cycles; Test environment condition: Room temperature: 15-25°C; Room humidity: 40-70% Note: This testing report displaces the original report of No. SNB180105015001B, and the original one No. SNB180105015001B was invalid since the date of this testing report released. 电池 A1#-A10#为首次循环满电状态; 元件电池芯 A11#-A15#为首次循环 50%充电状态; 电池 A16#-A19#为首次循环满电状态; 电池 A20#-A23#为 50 个循环后满电状态; 元件电池芯 A24#-A33#为首次循环完全放电状态; 元件电池芯 A34#-A43#为 50 个循环后完全放电状态; 试验环境条件: 环境温度: 15-25°C; 环境湿度: 40-70% 注: 本报告替换原报告 SNB180105015001B, 自本报告签发之日起, 原报告 SNB180105015001B 作废。</p>
<p>Summaries of testing 测试摘要:</p> <p>Each battery type is subjected to tests T.1 to T.8. Tests T.1 to T.5 are conducted in sequence on the same</p>

battery. Tests 6 and 8 are conducted using not otherwise tested batteries. Test T.7 may be conducted using undamaged batteries previously used in Tests T.1 to T.5 for purposes of testing on cycled batteries.

每一种类型的电池均应进行T.1至T.8项试验。电池必须按顺序在相同的一组电池上进行T.1至T.5的试验。T.6和T.8的试验应使用未另外试验过的电池。T.7的试验可以使用先前在T.1至T.5的试验中使用过的未损坏电池进行，以便测试进行在循环过的电池上。

In order to quantify the mass loss, the following procedure is provided:

$$\text{Mass loss}(\%) = (M_1 - M_2) / M_1 \times 100$$

为了量化质量损失，可用以下公式计算：

$$\text{质量损失}(\%) = (M_1 - M_2) / M_1 \times 100$$

Where M_1 is the mass before the test and M_2 is the mass after the test. When mass loss does not exceed the values in Table below, it is considered as "no mass loss".

式中： M_1 是试验前的质量， M_2 是试验后的质量。如果质量损失不超过下表所列的数值，应视为“无质量损失”。

Mass M of cell or battery 电芯或电池的质量	Mass loss limit 质量损失限值
$M < 1g$	0.5%
$1g \leq M \leq 75g$	0.2%
$M > 75g$	0.1%

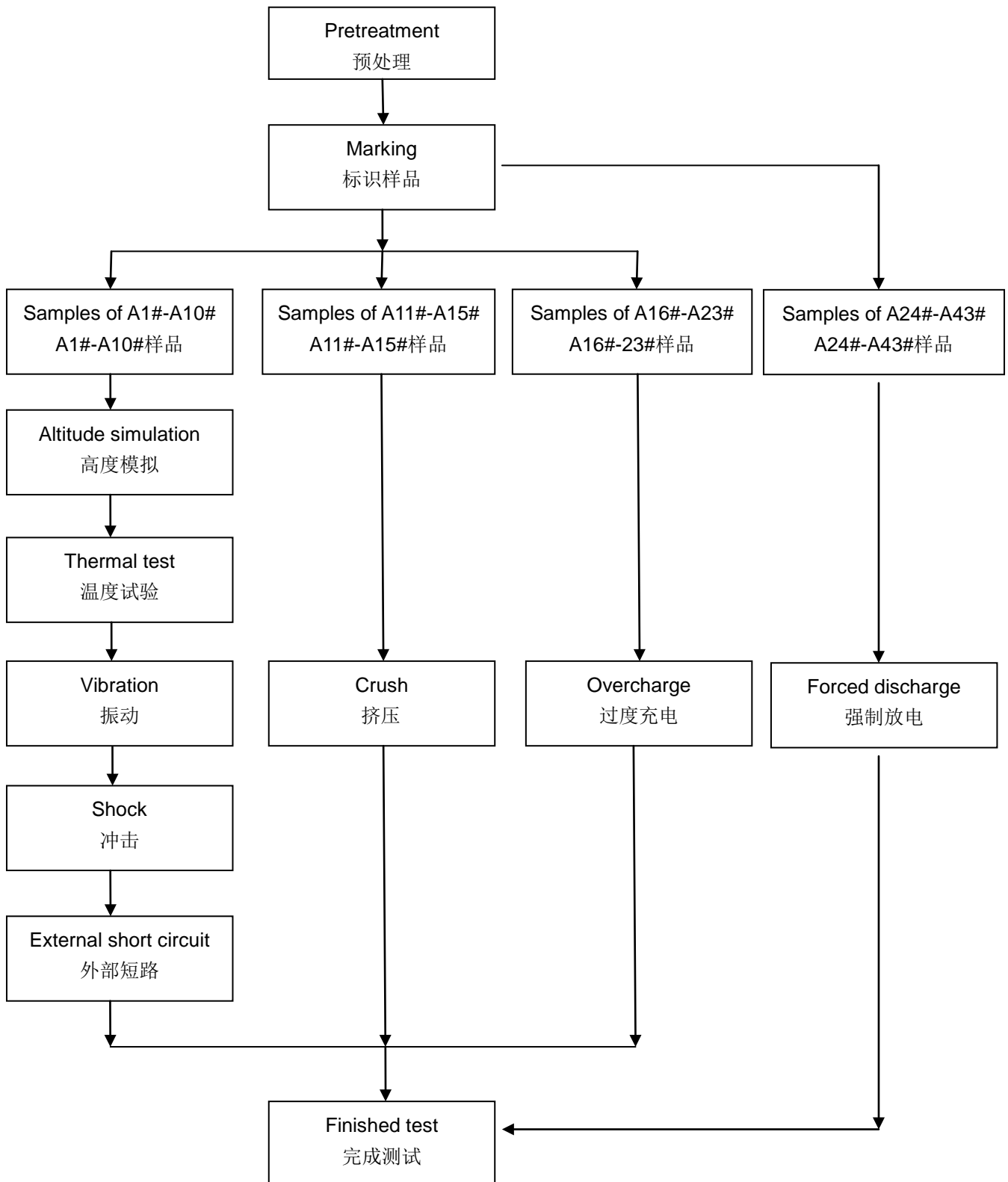
In tests T.1 to T.4, batteries meet this requirement if there is no leakage, no venting, no disassembly, no rupture and no fire and if the open circuit voltage of each test battery after testing is not less than 90% of its voltage immediately prior to this procedure.

在T.1至T.4的试验中，电池须满足无渗漏、无泄气、无解体、无破裂和无起火，并且每个试验电池在试验后的开路电压不小于其在进行这一试验前电压的90%。

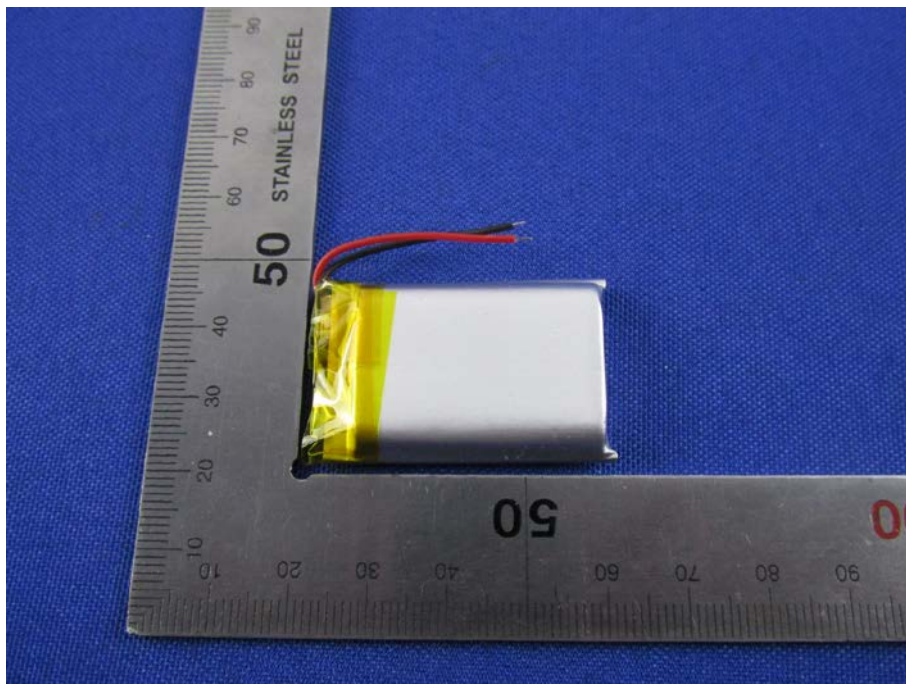
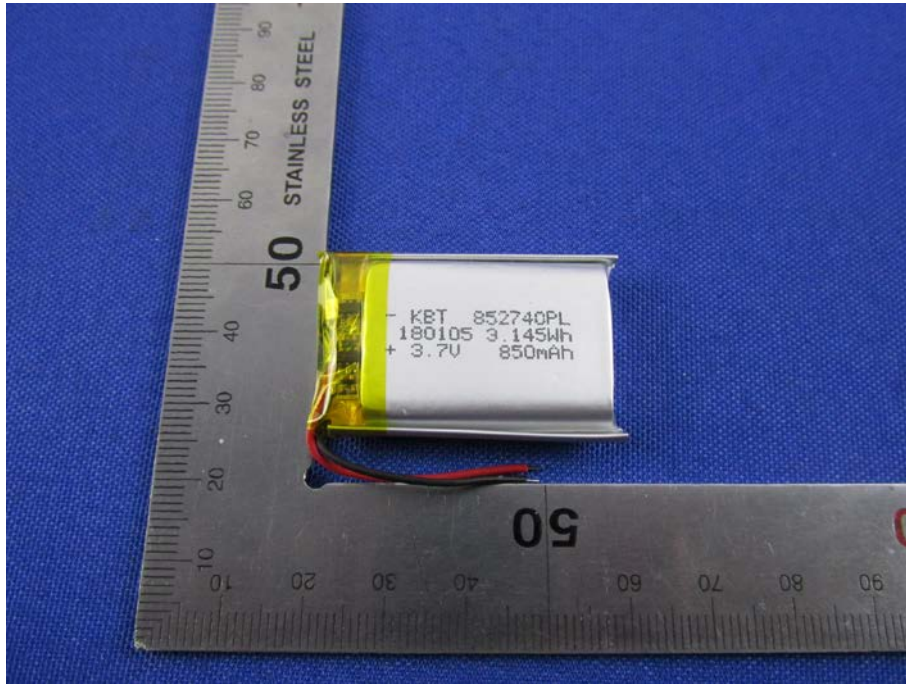
Test equipments 检测设备:

- LNS-005 Battery test system 电池检测系统
- LNS-006 Electronic balance 电子天平
- LNS-007 Low pressure chamber 低气压试验箱
- LNS-068 Programmable Temperature Chamber 可程式恒温箱
- LNS-008 Vibration test system 振动测试系统
- LNS-009 Hydraulic Hoist Vertical Shock System 液压垂直冲击系统
- LNS-010 Short circuit tester 短路测试机
- LNS-012 Explosion-proof chamber 防爆箱
- LNS-013 DC Source 直流电源
- LNS-044 Digital multimeter 数字式万用表
- LNS-035 midi Logger 记录仪
- LNS-014 Battery crush and acupuncture tester 电池挤压针刺试验机

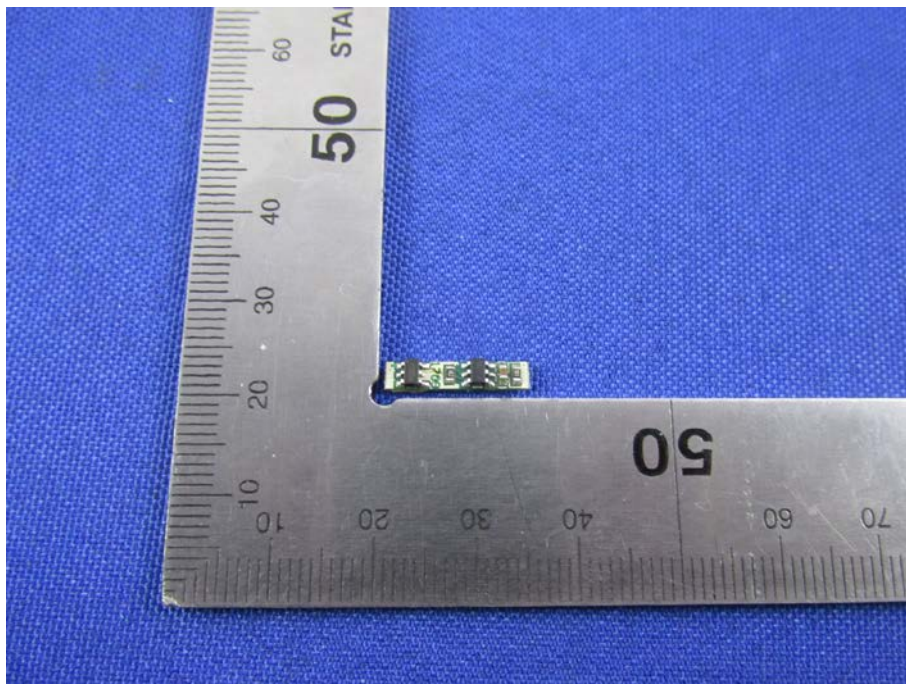
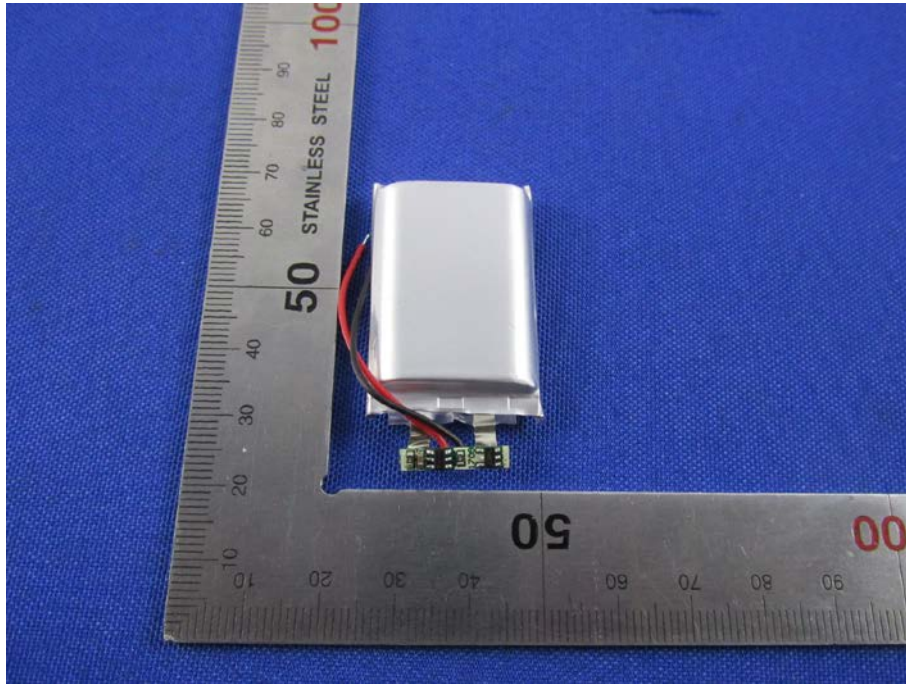
Test Procedure 测试程序



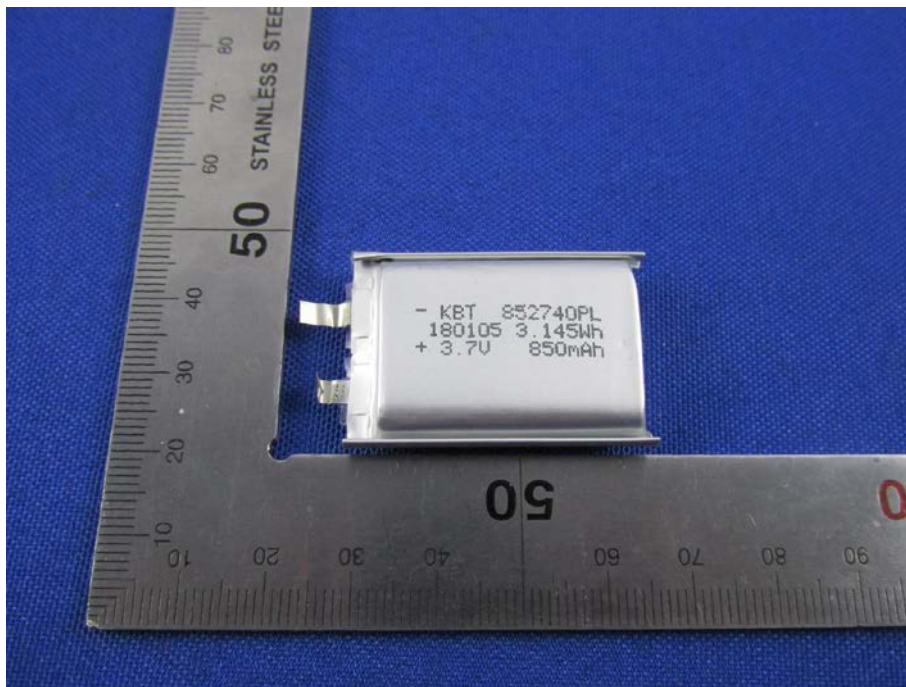
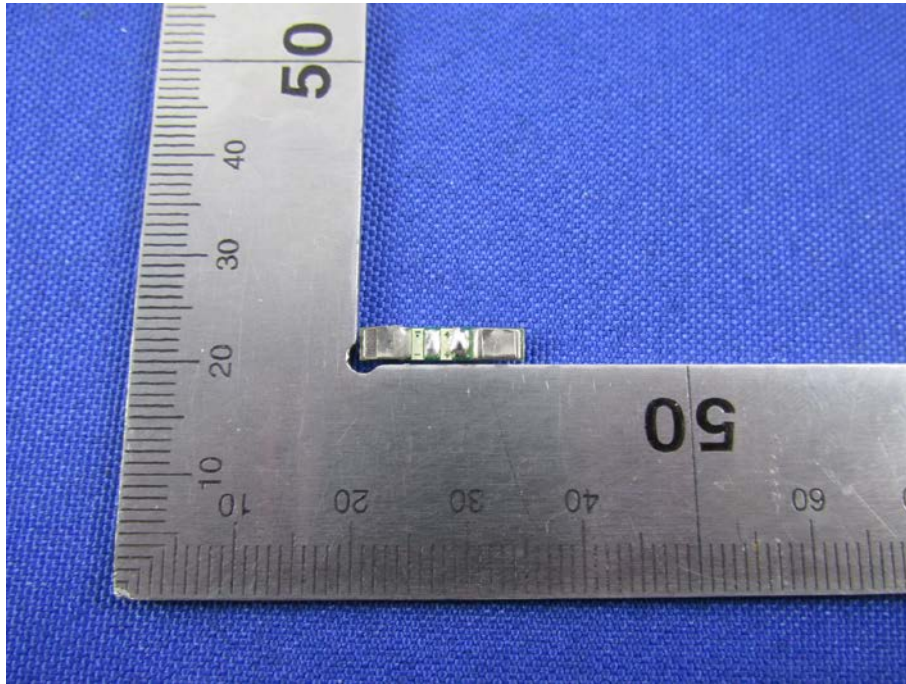
Photos of sample 样品照片



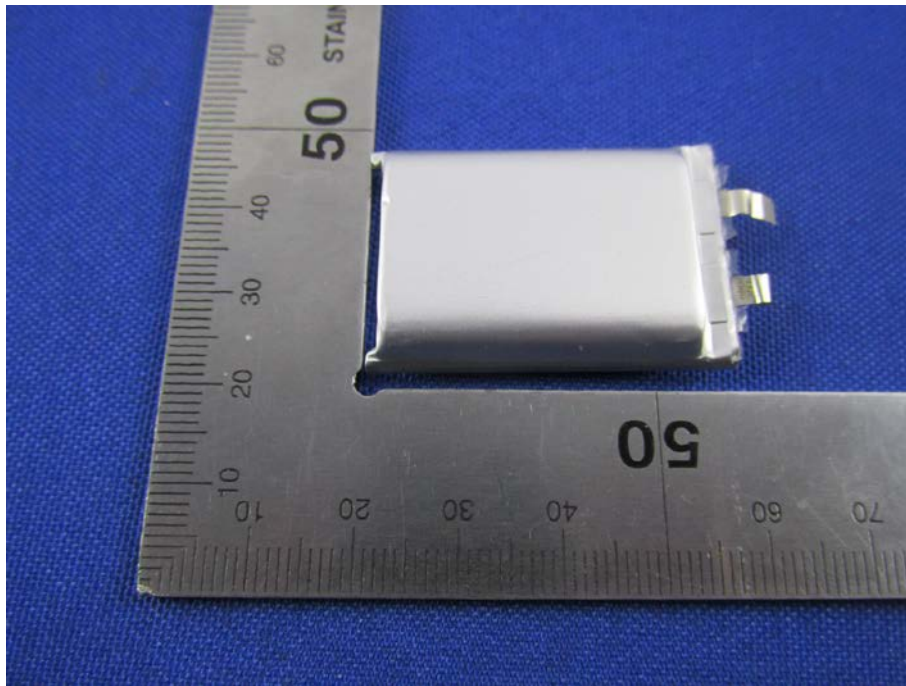
Photos of sample 样品照片



Photos of sample 样品照片



Photos of sample 样品照片



Test results 测试结果:
Test T.1: Altitude simulation 试验T.1: 高度模拟
Test method 测试方法

Batteries are stored at a pressure of 11.6 kPa or less for at least six hours at ambient temperature ($20 \pm 5^{\circ}\text{C}$).
 试验电池被放置在压力等于或低于11.6 kPa和环境温度($20\pm 5^{\circ}\text{C}$)下存放至少6小时。

Requirement 要求

Batteries meet this requirement if there is no leakage, no venting, no disassembly, no rupture and no fire and if the open circuit voltage of each test battery after testing is not less than 90% of its voltage immediately prior to this procedure.

电池须无渗漏、无泄气、无解体、无破裂和无起火，并且每个试验电池在试验后的开路电压不小于其在进行这一试验前电压的90%。

Test Data showed in table below 测试数据见下表

State of samples 样品状态	No. 编号	Prior to test 试验前		After test 试验后		Mass loss 质量损失 (%)	Voltage after test/ voltage prior to test (%) 试验后电压/ 试验前电压	Results 结果
		Mass 质量 (g)	Voltage 电压 (V)	Mass 质量 (g)	Voltage 电压 (V)			
Fully charged at first cycle 首次循环满电状态	A1#	14.379	4.186	14.379	4.184	0.00	99.95	PASS 合格
	A2#	14.339	4.182	14.339	4.181	0.00	99.98	PASS 合格
	A3#	14.171	4.184	14.171	4.181	0.00	99.93	PASS 合格
	A4#	14.294	4.182	14.294	4.180	0.00	99.95	PASS 合格
	A5#	14.259	4.180	14.259	4.179	0.00	99.98	PASS 合格
	A6#	14.471	4.181	14.471	4.180	0.00	99.98	PASS 合格
	A7#	14.552	4.186	14.552	4.182	0.00	99.90	PASS 合格
	A8#	14.401	4.182	14.401	4.179	0.00	99.93	PASS 合格
	A9#	14.345	4.183	14.345	4.181	0.00	99.95	PASS 合格
	A10#	14.340	4.180	14.340	4.176	0.00	99.90	PASS 合格

Notes 注释:

After the test, there is no leakage, no venting, no disassembly, no rupture and no fire.

测试后，电池未渗漏、未泄气、未解体、未破裂和未起火。

Shenzhen NTEK Testing Technology Co., Ltd.

Tel: +86-755-6115 6588 Fax: +86-755-6115 6599

<http://www.ntek.org.cn>

Room temperature 环境温度: 21.2°C

Test T.2: Thermal test 试验T.2: 温度试验

Test method 测试方法

Batteries are to be stored for at least six hours at a test temperature equal to $72 \pm 2^\circ\text{C}$, followed by storage for at least six hours at a test temperature equal to $-40 \pm 2^\circ\text{C}$. The maximum time interval between test temperature extremes is 30 minutes. This procedure is to be repeated 10 times, after which all test batteries are to be stored for 24 hours at ambient temperature ($20 \pm 5^\circ\text{C}$).

电池放置在试验温度等于 $72 \pm 2^\circ\text{C}$ 的条件下存放至少6小时,接着再在试验温度等于 $-40 \pm 2^\circ\text{C}$ 的条件下存放至少6小时。两个极端试验温度之间的最大时间间隔为30分钟。此程序重复进行,共完成10次,接着将所有试验电池在环境温度($20 \pm 5^\circ\text{C}$)下存放24小时。

Requirement 要求

Batteries meet this requirement if there is no leakage, no venting, no disassembly, no rupture and no fire and if the open circuit voltage of each test battery after testing is not less than 90% of its voltage immediately prior to this procedure.

电池须无渗漏、无泄气、无解体、无破裂和无起火,并且每个试验电池在试验后的开路电压不小于其在进行这一试验前电压的90%。

Test Data showed in table below 测试数据见下表

State of samples 样品状态	No. 编号	Prior to test 试验前		After test 试验后		Mass loss 质量损失 (%)	Voltage after test/ voltage prior to test (%) 试验后电压/ 试验前电压	Results 结果
		Mass 质量 (g)	Voltage 电压 (V)	Mass 质量 (g)	Voltage 电压 (V)			
Fully charged at first cycle 首次循环满电状态	A1#	14.379	4.184	14.373	4.151	0.042	99.21	PASS 合格
	A2#	14.339	4.181	14.332	4.150	0.049	99.26	PASS 合格
	A3#	14.171	4.181	14.166	4.149	0.035	99.23	PASS 合格
	A4#	14.294	4.180	14.289	4.144	0.035	99.14	PASS 合格
	A5#	14.259	4.179	14.252	4.148	0.049	99.26	PASS 合格
	A6#	14.471	4.180	14.465	4.152	0.041	99.33	PASS 合格
	A7#	14.552	4.182	14.545	4.156	0.048	99.38	PASS 合格
	A8#	14.401	4.179	14.395	4.147	0.042	99.23	PASS 合格
	A9#	14.345	4.181	14.338	4.148	0.049	99.21	PASS 合格

	A10#	14.340	4.176	14.334	4.151	0.042	99.40	PASS 合格
--	------	--------	-------	--------	-------	-------	-------	------------

Notes 注释:

After the test, there is no leakage, no venting, no disassembly, no rupture and no fire.

测试后, 电池未渗漏、未泄气、未解体、未破裂和未起火。

Room temperature 环境温度: 21.0°C

Test T.3: Vibration 试验T.3: 振动
Test method 测试方法

Batteries are firmly secured to the platform of the vibration machine without distorting the cells in such a manner as to faithfully transmit the vibration. The vibration shall be a sinusoidal waveform with a logarithmic sweep between 7 Hz and 200 Hz and back to 7 Hz traversed in 15 minutes. This cycle shall be repeated 12 times for a total of 3 hours for each of three mutually perpendicular mounting positions of the cell. One of the directions of vibration must be perpendicular to the terminal face.

The logarithmic frequency sweep is as follows: from 7 Hz a peak acceleration of 1 g_n is maintained until 18 Hz is reached. The amplitude is then maintained at 0.8 mm (1.6 mm total excursion) and the frequency increased until a peak acceleration of 8 g_n occurs (approximately 50 Hz). A peak acceleration of 8 g_n is then maintained until the frequency is increased to 200 Hz.

电池紧固于振动台台面, 但不得造成电池变形, 并能准确可靠地传播振动。振动应是正弦波形, 对数扫描频率在 7 Hz 和 200 Hz 之间, 再回到 7 Hz, 1 次循环时间为 15 分钟。这一振动过程须对三个互相垂直的电池安装方位的每一方向重复进行 12 次, 总共为时 3 小时。其中一个振动方向必须与端面垂直。

对数扫频方式: 从 7 Hz 开始, 保持 1 g_n 的最大加速度, 直到频率达到 18 Hz。然后将振幅保持在 0.8 mm (总位移 1.6 mm), 并增加频率直到峰值加速度达到 8 g_n (频率约为 50 Hz)。将峰值加速度保持在 8 g_n 直到频率增加到 200 Hz。

Requirement 要求

Batteries meet this requirement if there is no leakage, no venting, no disassembly, no rupture and no fire and if the open circuit voltage of each test battery after testing is not less than 90% of its voltage immediately prior to this procedure.

电池须无渗漏、无泄气、无解体、无破裂和无起火, 并且每个试验电池在试验后的开路电压不小于其在进行这一试验前电压的 90%。

Test Data showed in table below 测试数据见下表

State of samples 样品状态	No. 编号	Prior to test 试验前		After test 试验后		Mass loss 质量损失 (%)	Voltage after test/ voltage prior to test (%) 试验后电压/ 试验前电压	Results 结果
		Mass 质量 (g)	Voltage 电压 (V)	Mass 质量 (g)	Voltage 电压 (V)			
Fully charged at first cycle 首次循环满电状态	A1#	14.373	4.151	14.373	4.150	0.00	99.98	PASS 合格
	A2#	14.332	4.150	14.332	4.148	0.00	99.95	PASS 合格

	A3#	14.166	4.149	14.166	4.148	0.00	99.98	PASS 合格
	A4#	14.289	4.144	14.289	4.144	0.00	100.0	PASS 合格
	A5#	14.252	4.148	14.252	4.147	0.00	99.98	PASS 合格
	A6#	14.465	4.152	14.465	4.152	0.00	100.0	PASS 合格
	A7#	14.545	4.156	14.545	4.156	0.00	100.0	PASS 合格
	A8#	14.395	4.147	14.395	4.146	0.00	99.98	PASS 合格
	A9#	14.338	4.148	14.338	4.147	0.00	99.98	PASS 合格
	A10#	14.334	4.151	14.334	4.150	0.00	99.98	PASS 合格

Notes 注释:

After the test, there is no leakage, no venting, no disassembly, no rupture and no fire.

测试后, 电池未渗漏、未泄气、未解体、未破裂和未起火。

Room temperature 环境温度: 21.8°C

Test T.4: Shock 试验 T.4: 冲击
Test method 测试方法

Batteries are secured to the testing machine by means of a rigid mount which will support all mounting surfaces of each test battery. Each battery is subjected to a half-sine shock of peak acceleration of 150 g_n and pulse duration of 6 milliseconds. Each battery is subjected to three shocks in the positive direction followed by three shocks in the negative direction of three mutually perpendicular mounting positions of the battery for a total of 18 shocks.

试验电池用刚性支架紧固在试验装置上, 支架支撑着每个试验电池组的所有安装面。每个电池须经受峰值加速度 150 g_n和脉冲持续时间6 ms的半正弦波冲击。每个电池须在三个互相垂直的电池安装方位的正方向经受三次冲击, 接着在反方向经受三次冲击, 总共经受18次冲击。

Requirement 要求

Batteries meet this requirement if there is no leakage, no venting, no disassembly, no rupture and no fire and if the open circuit voltage of each test battery after testing is not less than 90% of its voltage immediately prior to this procedure.

电池须无渗漏、无泄气、无解体、无破裂和无起火, 并且每个试验电池在试验后的开路电压不小于其在进行这一试验前电压的90%。

Test Data showed in table below 测试数据见下表

State of samples 样品状态	No. 编号	Prior to test 试验前		After test 试验后		Mass loss 质量损	Voltage after test/ voltage prior to test	Results 结果
		Mass 质量	Voltage 电压	Mass 质量	Voltage 电压			

		(g)	(V)	(g)	(V)	失 (%)	(%) 试验后电压/ 试验前电压	
Fully charged at first cycle 首次循环满电状 态	A1#	14.373	4.150	14.373	4.150	0.00	100.0	PASS 合格
	A2#	14.332	4.148	14.332	4.148	0.00	100.0	PASS 合格
	A3#	14.166	4.148	14.166	4.147	0.00	99.98	PASS 合格
	A4#	14.289	4.144	14.289	4.144	0.00	100.0	PASS 合格
	A5#	14.252	4.147	14.252	4.146	0.00	99.98	PASS 合格
	A6#	14.465	4.152	14.465	4.151	0.00	99.98	PASS 合格
	A7#	14.545	4.156	14.545	4.156	0.00	100.0	PASS 合格
	A8#	14.395	4.146	14.395	4.146	0.00	100.0	PASS 合格
	A9#	14.338	4.147	14.338	4.147	0.00	100.0	PASS 合格
	A10#	14.334	4.150	14.334	4.149	0.00	99.98	PASS 合格

Notes 注释:

After the test, there is no leakage, no venting, no disassembly, no rupture and no fire.

测试后, 电池未渗漏、未泄气、未解体、未破裂和未起火。

Room temperature 环境温度: 21.2°C

Test T.5: External short circuit 试验T.5: 外部短路
Test method 测试方法

Batteries to be tested are heated for a period of time necessary to reach a homogeneous stabilized temperature of 57 ± 4 °C, measured on the external case. This period of time depends on the size and design of the battery and is assessed and documented. Then the battery at 57 ± 4 °C is subjected to one short circuit condition with a total external resistance of less than 0.1 ohm.

This short circuit condition is continued for at least one hour after the battery external case temperature has returned to 57 ± 4 °C.

The short circuit and cooling down phases are conducted at least at ambient temperature.

试验电池首先被加热或恒定一段时间, 使其达到 57 ± 4 °C并使其外表面温度均匀恒定在 57 ± 4 °C。该加热时间或热恒定时间的长短取决于该电池的尺寸和设计, 并同时加以评估及提供文件证明。然后该电池在 57 ± 4 °C的条件下承受一个外部总阻抗小于0.1Ω的短路条件。

该短路测试持续到电池外表面温度返回至 57 ± 4 °C后再保持至少1小时。

该短路和冷却阶段均被执行在 57 ± 4 °C的环境温度下。

Shenzhen NTEK Testing Technology Co., Ltd.

Tel: +86-755-6115 6588 Fax: +86-755-6115 6599

<http://www.ntek.org.cn>

Requirement 要求

Batteries meet this requirement if their external temperature does not exceed 170°C and there is no disassembly, no rupture and no fire during the test and within six hours after test.

电池外壳温度不超过170°C，并且在试验过程中及试验后6小时内无解体、无破裂，无起火。

Test data showed in table below 测试数据见下表

State of samples 样品状态	No. 编号	Maximum outer casing temperature 电池表面最高温度 (°C)	Results 结果
Fully charged at first cycle 首次循环满电状态	A1#	57.9	PASS 合格
	A2#	58.0	PASS 合格
	A3#	58.2	PASS 合格
	A4#	58.2	PASS 合格
	A5#	57.8	PASS 合格
	A6#	57.9	PASS 合格
	A7#	58.0	PASS 合格
	A8#	57.2	PASS 合格
	A9#	57.8	PASS 合格
	A10#	57.4	PASS 合格

Notes 注释:

There is no disassembly, no rupture and no fire during the test and within six hours after test.

电池在测试中和测试后 6 小时内未解体、未破裂，未起火。

Room temperature 环境温度: 22.0°C

Test T.6: Crush 试验T.6: 挤压
Test method 测试方法

A component cell is to be crushed between two flat surfaces. The crushing is to be gradual with a speed of approximately 1.5 cm/s at the first point of contact. The crushing is to be continued until the first of the three options below is reached.

- (a) The applied force reaches 13 kN ± 0.78 kN;
- (b) The voltage of the cell drops by at least 100 mV; or
- (c) The cell is deformed by 50% or more of its original thickness.

Once the maximum pressure has been obtained, the voltage drops by 100 mV or more, or the cell is deformed by at least 50% of its original thickness, the pressure is released.

A prismatic or pouch cell shall be crushed by applying the force to the widest side. A button/coin cell shall be crushed by applying the force on its flat surfaces. For cylindrical cells, the crush force shall be applied perpendicular to the longitudinal axis.

Each component cell is to be subjected to one crush only. The test sample is observed for a further 6 h. The test is conducted using component cells that have not previously been subjected to other tests.

将元件电池芯放在两个平面之间挤压，挤压力度逐渐加大，在第一个接触点上的速度大约为 1.5 cm/s。挤压持续进行，直到出现以下三种情况之一：

- (a) 施加的力量达到 13 kN ± 0.78 kN;

- (b) 电芯的电压下降至少 100mV; 或
 (c) 电芯形变达原始厚度的 50%或更多。

一旦达到最大压力、电压下降 100mV 或更多, 或电芯形变至少达原厚度的 50%, 即可解除压力。

棱柱形或袋装电池芯须从最宽的面施压。扣式或币式电池芯, 须施加挤压力在它的扁平面之间。圆柱形电池芯, 挤压力须施加于垂直于电池芯纵轴的方向上。

每个试样元件电池芯只做一次挤压试验。试样须继续观察 6 小时。试验须使用之前未做过其他试验的元件电池芯进行。

Requirement 要求

Component cells meet this requirement if their external temperature does not exceed 170°C and there is no disassembly and no fire during the test and within six hours after the test.

元件电池芯外壳温度不超过170°C, 并且在试验过程中及试验后6小时内无解体, 无起火。

Test data showed in table below 测试数据见下表

State of samples 样品状态	No. 编号	Maximum outer casing temperature 电池表面最高温度 (°C)	Results 结果
50% charged of the design rated capacity at first cycle 首次循环 50%充电状态	A11#	23.2	PASS 合格
	A12#	24.0	PASS 合格
	A13#	23.7	PASS 合格
	A14#	23.9	PASS 合格
	A15#	24.0	PASS 合格

Notes 注释:

There is no disassembly, no rupture and no fire during the test and within six hours after test.

电池在测试中和测试后 6 小时内未解体、未起火。

Room temperature 环境温度: 20.2°C

Test T.7: Overcharge 试验 T.7: 过度充电

Test method 测试方法

The charge current is twice the manufacturer's recommended maximum continuous charge current. The minimum voltage of the test is as follows:

- (a) When the manufacturer's recommended charge voltage is not more than 18V, the minimum voltage of the test is the lesser of two times the maximum charge voltage of the battery or 22V.

Tests are to be conducted at ambient temperature. The duration of the test is 24 hours.

充电电流为制造商建议的最大持续充电电流的两倍。试验的最小电压如下:

- (a) 制造商建议的充电电压不大于18V时, 试验的最小电压应是电池组最大充电电压的两倍或22伏两者中的较小者。

试验在环境温度下进行。试验时间为24小时。

Requirement 要求

Batteries meet this requirement if there is no disassembly and no fire during the test and within seven days after the test.

电池在试验过程中和试验后7天内无解体, 无起火。

Test data showed in table below 测试数据见下表

Overcharge current 过充电电流(mA)	2x850=1700mA	
Overcharge voltage 过充电电压(Vdc)	2x4.2=8.4V	
Duration of the test 过充试验时间(hours)	24 hours	
State of samples 样品状态	No. 编号	Results 结果
Fully charged at first cycle 首次循环满电状态	A16#	PASS 合格
	A17#	PASS 合格
	A18#	PASS 合格
	A19#	PASS 合格
Fully charged after fifty cycles 50 次循环后满电状态	A20#	PASS 合格
	A21#	PASS 合格
	A22#	PASS 合格
	A23#	PASS 合格

Notes 注释:

There is no disassembly and no fire during the test and within seven days after the test.

电池在测试中和测试后 7 天内未解体, 未着火。

Room temperature 环境温度: 21.2°C

Test T.8: Forced discharge 试验 T.8: 强制放电

Test method 测试方法

Each component cell is forced discharged at ambient temperature by connecting it in series with a 12V D.C. power supply at an initial current equal to the maximum discharge current specified by the manufacturer.

The specified discharge current is to be obtained by connecting a resistive load of the appropriate size and rating in series with the test cell. Each cell is forced discharged for a time interval (in hours) equal to its rated capacity divided by the initial test current (in ampere).

每个元件电池芯在环境温度下与 12V 直流电源串联在起始电流等于制造商给定的最大放电电流的条件下强制放电。

元件电池芯与一个适当大小的电阻负载串联以调节到规定大小的放电电流。每块电芯的放电时间(单位为 h)等于电芯的额定容量除以试验初始放电电流(单位 A)。

Requirement 要求

Component cells meet this requirement if there is no disassembly and no fire during the test and within seven days after the test.

元件电池芯在试验过程中和试验后 7 天内无解体, 无起火。

Test data showed in table below 测试数据见下表

Initial current 初始电流(mA)	850mA	
Supply voltage 试验电压(Vdc)	12Vdc	
Time interval 试验时间(Minutes)	60 Minutes	
State of samples	No.	Results

样品状态	编号	结果
Fully discharged at first cycle 首次循环完全放电状态	A24#	PASS 合格
	A25#	PASS 合格
	A26#	PASS 合格
	A27#	PASS 合格
	A28#	PASS 合格
	A29#	PASS 合格
	A30#	PASS 合格
	A31#	PASS 合格
	A32#	PASS 合格
	A33#	PASS 合格
Fully discharged after fifty cycles 50 个循环后完全放电状态	A34#	PASS 合格
	A35#	PASS 合格
	A36#	PASS 合格
	A37#	PASS 合格
	A38#	PASS 合格
	A39#	PASS 合格
	A40#	PASS 合格
	A41#	PASS 合格
	A42#	PASS 合格
	A43#	PASS 合格

Notes 注释:

There is no disassembly and no fire during the test and within seven days after the test.

元件电池芯在测试中和测试后 7 天内未解体, 未着火。

Room temperature 环境温度: 20.9°C

*******End of Test Report 检测报告结束*******

Important 注意事项

1. The test report is invalid without the Report Seal of NTEK and Paging seal of NTEK.
本报告书无本公司报告专用章、骑缝章无效。
2. Nobody is allowed to photocopy or partly photocopy this test report without written permission of NTEK.
未经本公司书面同意，不得部分地复制本报告书。
3. The test report is invalid without the signatures of Ratifier, Reviewer and Testing engineer.
本报告书无批准人、审核人、及主检人签名无效。
4. The report is invalid when anything of following happens – illegal transfer, reproduce, embezzlement, imposture, modification or tampering in any media form.
私自转让、复制、盗用、冒用、涂改、或以任何媒体形式篡改的报告书无效。
5. Objections to the test report must be submitted to NTEK within 15 days.
对报告书若有异议，应于收到报告之日起15天内向本公司提出。
6. The test report is valid for the tested samples only.
本报告仅对测试样品有效。
7. The Chinese contents in this report are only for reference.
本报告中的中文内容仅供参考。

深圳市北测检测技术有限公司

Shenzhen NTEK Testing Technology Co., Ltd.

地址：深圳市宝安区西乡三围奋达科技园 E 栋 1 楼

Address: 1/F, Building E, Fenda Science Park, Sanwei Community, Xixiang Street, Bao'an District, Shenzhen 518126 P.R. China

Tel: +86-755-6115 6588

Fax: +86-755-6115 6599

Email: coco@ntek.org.cn Kevin@ntek.org.cn

<http://www.ntek.org.cn>