



Pony Testing International Group

报告编号(Report ID): MZIPS4NS02192021a

锂电池 UN38.3 测试报告

Lithium Battery UN38.3 Test Report

Sample Description

BATTERY 150 112315

& Model

Applicant

PELENC SA

Manufacturer

DongGuan PELENC Electrical&Mechanical Co.,Ltd.

PONY 谱尼测试
Pony Testing International Group

www.ponytest.com

No.: MZIPS4NS02192021

Code: hky57t



Pony Testing International Group

I、SAMPLE DESCRIPTION

Sample Description	BATTERY 150		Sample Model	112315	
Applicant	PELLENC SA				
Manufacturer	DongGuan PELLENC Electrical&Mechanical Co.,Ltd				
Nominal Voltage	43.2V	Rated Capacity	3.3Ah/3.45Ah (Rated /Max)	Limited Charge Voltage	50.3V
Charge Current	0.4Ah	Maximum Continuous Charge Current	1.5Ah	End Charge Current	30mA
Cut-off Voltage	30V	Maximum Discharge Current	15A (pulse)	Use	Electroportable Power tools
Cell Number In Each Battery	12PCS	Cell Model	NCR 18650GA	Cell Capacity	3.3Ah
Manufacturer of cell	SANYO				
Entrust date	2015-2-15		Finished date	2015-3-16	

Note: No load output Voltage:5V

II、TEST METHOD

《United Nations Recommendations On The Transport Of Dangerous Goods, Manual Of Tests And Criteria》
(ST/SG/AC.10/11/Rev.5, amend.1 & amend.2, 38.3).

III、TEST ITEM

- | | |
|------------------------|---------------------------|
| 1. Altitude simulation | 5. External short circuit |
| 2. Thermal test | 6. Impact |
| 3. Vibration | 7. Overcharge |
| 4. Shock | 8. Forced discharge |

IV、CONCLUSION

ITEM	SAMPLE NUMBER	STANDARD	CONCLUSION
Altitude simulation	N1~N4 C1~C4	UN38.3	PASS
Thermal test			PASS
Vibration			PASS
Shock			PASS
External short circuit	N9~N13		PASS
Impact			PASS
Overcharge	N5~N8 C5~C8		PASS
Forced discharge	N14~N23 C9~C18		PASS

The Samples has passed the test items of UNITED NATIONS "Recommendations on the TRANSPORT OF DANGEROUS GOODS" Manual of Tests and Criteria, ST/SG/AC.10/11/Rev.5 amend.1 & amend.2, 38.3.

Prepared by: *Lin Jidong*Checked by: *Kobe Wang*Approved by: *Song Hong*

Issue Date: March 16, 2015

www.ponytest.com ☎Hotline 400-819-5688

PONY

Pony Testing International Group

Notes:

N1~N8: Cells at first cycle in fully charged states;

N9~N13: Cells at first cycle at 50% of the design rated capacity;

N14~N23: Cells at first cycle in fully discharged states;

C1~C8: Cells after 50 cycles ending in fully charged states;

C9~C18: Cells after 50 cycles ending in fully discharged states.

V. PHOTO OF THE SAMPLE



Authenticate the photo on original report only

www.ponytest.com

Hotline 400-819-5688

PONY 谱尼测试
Pony Testing International Group

北京实验室: (010) 82618116 天津实验室: (0431) 85150900 上海实验室: (021) 64851999 深圳实验室: (0755) 26050909
青岛实验室: (0532) 88706666 大连实验室: (0411) 84650820 宁波实验室: (0574) 87736199 广州实验室: (020) 89224310
天津实验室: (022) 27360730 郑州实验室: (0371) 69350670 杭州实验室: (0571) 87219096 武汉实验室: (027) 83997127



Pony Testing International Group

VI. TEST METHOD

Tests T.1 to T.5 shall be conducted in sequence on the same cell or battery. Tests T.6 and T.8 shall be conducted using not otherwise tested cells or batteries. Test T.7 may be conducted using undamaged batteries previously used in tests T.1 to T.5 for purposes of testing on cycled batteries.

In order to quantify the mass loss, the following procedure is provided:

$$\text{Mass loss(\%)} = (M_1 - M_2) / M_1 \times 100$$

Where M_1 is the mass before the test and M_2 is the mass after the test. When mass loss does not exceed the values in Table blow, it shall be considered as "no mass loss".

Mass M of cell or battery	Mass loss limit
$M < 1\text{g}$	0.5%
$1\text{g} \leq M \leq 75\text{g}$	0.2%
$M > 75\text{g}$	0.1%

T.1 Altitude simulation

Test cells and batteries shall be stored at a pressure of 11.6 kPa or less for at least six hours at ambient temperature ($20 \pm 5 \text{ }^\circ\text{C}$).

Cells and batteries meet this requirement if there is no leakage, no venting, no disassembly, no rupture and no fire and if the open circuit voltage of each test cell or battery after testing is not less than 90% of its voltage immediately prior to this procedure. The requirement relating to voltage is not applicable to test cells and batteries at fully discharged states.

T.2 Thermal test

Test cells and batteries are to be stored for at least six hours at a test temperature equal to $72 \pm 2 \text{ }^\circ\text{C}$, followed by storage for at least six hours at a test temperature equal to $-40 \pm 2 \text{ }^\circ\text{C}$. The maximum time interval between test temperature extremes is 30 minutes. This procedure is to be repeated until 10 total cycles are complete, after which all test cells and batteries are to be stored for 24 hours at ambient temperature ($20 \pm 5 \text{ }^\circ\text{C}$). For large cells and batteries the duration of exposure to the test temperature extremes should be at least 12 hours.

Cells and batteries meet this requirement if there is no leakage, no venting, no disassembly, no rupture and no fire and if the open circuit voltage of each test cell or battery after testing is not less than 90% of its voltage immediately prior to this procedure. The requirement relating to voltage is not applicable to test cells and batteries at fully discharged states.

www.ponytest.com ☎Hotline 400-819-5688



Pony Testing International Group

T.3 Vibration

Cells and batteries are firmly secured to the platform of the vibration machine without distorting the cells in such a manner as to faithfully transmit the vibration. The vibration shall be a sinusoidal waveform with a logarithmic sweep between 7 Hz and 200 Hz and back to 7 Hz traversed in 15 minutes. This cycle shall be repeated 12 times for a total of 3 hours for each of three mutually perpendicular mounting positions of the cell. One of the directions of vibration must be perpendicular to the terminal face.

The logarithmic frequency sweep shall differ for cells and batteries with a gross mass of not more than 12 kg (cells and small batteries), and for batteries with a gross mass of more than 12 kg (large batteries).

For cells and small batteries: from 7 Hz a peak acceleration of 1 g_n is maintained until 18 Hz is reached. The amplitude is then maintained at 0.8 mm (1.6 mm total excursion) and the frequency increased until a peak acceleration of 8 g_n occurs (approximately 50 Hz).

A peak acceleration of 8 g_n is then maintained until the frequency is increased to 200 Hz.

For large batteries: from 7 Hz to a peak acceleration of 1 g_n is maintained until 18 Hz is reached. The amplitude is then maintained at 0.8 mm (1.6 mm total excursion) and the frequency increased until a peak acceleration of 2 g_n occurs (approximately 25 Hz). A peak acceleration of 2 g_n is then maintained until the frequency is increased to 200 Hz.

Cells and batteries meet this requirement if there is no leakage, no venting, no disassembly, no rupture and no fire during the test and after the test and if the open circuit voltage of each test cell or battery directly after testing in its third perpendicular mounting position is not less than 90% of its voltage immediately prior to this procedure. The requirement relating to voltage is not applicable to test cells and batteries at fully discharged states.

T.4 Shock

Test cells and batteries shall be secured to the testing machine by means of a rigid mount which will support all mounting surfaces of each test battery. Each cell or battery shall be subjected to a half-sine shock of peak acceleration of 150 g_n and pulse duration of 6 milliseconds. Each cell or battery shall be subjected to three shocks in the positive direction followed by three shocks in the negative direction of three mutually perpendicular mounting positions of the cell or battery for a total of 18 shocks.

However, large cells and large batteries shall be subjected to a half-sine shock of peak acceleration of 50 g_n and pulse duration of 11 milliseconds. Each cell or battery is subjected to three shocks in the positive direction followed by three shocks in the negative direction of each of three mutually perpendicular mounting positions of the cell for a total of 18 shocks.

www.ponytest.com ☎Hotline 400-819-5688

北京实验室: (010) 82613116 长春实验室: (0431) 85150908 上海实验室: (021) 64851999 深圳实验室: (0755) 26050909
 青岛实验室: (0532) 88706866 大连实验室: (0411) 84650820 宁波实验室: (0574) 87736499 广州实验室: (020) 89224310
 天津实验室: (022) 27360730 郑州实验室: (0371) 69350670 杭州实验室: (0571) 87219096 武汉实验室: (027) 63997127



Pony Testing International Group

Cells and batteries meet this requirement if there is no leakage, no venting, no disassembly, no rupture and no fire and if the open circuit voltage of each test cell or battery after testing is not less than 90% of its voltage immediately prior to this procedure. The requirement relating to voltage is not applicable to test cells and batteries at fully discharged states.

T.5 External short circuit

The cell or battery to be tested shall be temperature stabilized so that its external case temperature reaches $55 \pm 2 \text{ }^\circ\text{C}$ and then the cell or battery shall be subjected to a short circuit condition with a total external resistance of less than 0.1 ohm at $55 \pm 2 \text{ }^\circ\text{C}$. This short circuit condition is continued for at least one hour after the cell or battery external case temperature has returned to $55 \pm 2 \text{ }^\circ\text{C}$.

Cells and batteries meet this requirement if their external temperature does not exceed $170 \text{ }^\circ\text{C}$ and there is no disassembly, no rupture and no fire during the test and within six hours after the test.

T.6 Impact / Crush

Impact (applicable to cylindrical cells not less than 18 mm in diameter)

The sample cell or component cell is to be placed on a flat smooth surface. A $15.8 \text{ mm} \pm 0.1 \text{ mm}$ diameter, at least 6 cm long, or the longest dimension of the cell, whichever is greater, Type 316 stainless steel bar is to be placed across the centre of the sample. A $9.1 \text{ kg} \pm 0.1 \text{ kg}$ mass is to be dropped from a height of $61 \pm 2.5 \text{ cm}$ at the intersection of the bar and sample in a controlled manner using a near frictionless, vertical sliding track or channel with minimal drag on the falling mass. The vertical track or channel used to guide the falling mass shall be oriented 90 degrees from the horizontal supporting surface.

The test sample is to be impacted with its longitudinal axis parallel to the flat surface and perpendicular to the longitudinal axis of the $15.8 \text{ mm} \pm 0.1 \text{ mm}$ diameter curved surface lying across the centre of the test sample. Each sample is to be subjected to only a single impact.

Crush (applicable to prismatic, pouch, coin/button cells and cylindrical cells less than 18 mm in diameter)

A cell or component cell is to be crushed between two flat surfaces. The crushing is to be gradual with a speed of approximately 1.5 cm/s at the first point of contact. The crushing is to be continued until the first of the three options below is reached.

- (a) The applied force reaches $13 \text{ kN} \pm 0.78 \text{ kN}$;
- (b) The voltage of the cell drops by at least 100 mV; or
- (c) The cell is deformed by 50% or more of its original thickness.

Once the maximum pressure has been obtained, the voltage drops by 100 mV or more, or the cell is deformed by at least 50% of its original thickness, the pressure shall be released.

www.ponytest.com ©Hotline 400-819-5688



Pony Testing International Group

A prismatic or pouch cell shall be crushed by applying the force to the widest side. A button/coin cell shall be crushed by applying the force on its flat surfaces. For cylindrical cells, the crush force shall be applied perpendicular to the longitudinal axis.

Each test cell or component cell is to be subjected to one crush only. The test sample shall be observed for a further 6 h. The test shall be conducted using test cells or component cells that have not previously been subjected to other tests.

Cells and component cells meet this requirement if their external temperature does not exceed 170 °C and there is no disassembly and no fire during the test and within six hours after this test.

T.7 Overcharge

The charge current shall be twice the manufacturer's recommended maximum continuous charge current. The minimum voltage of the test shall be as follows:

- (a) When the manufacturer's recommended charge voltage is not more than 18V, the minimum voltage of the test shall be the lesser of two times the maximum charge voltage of the battery or 22V.
- (b) When the manufacturer's recommended charge voltage is more than 18V, the minimum voltage of the test shall be 1.2 times the maximum charge voltage.

Tests are to be conducted at ambient temperature; the duration of the test shall be 24 hours.

Rechargeable batteries meet this requirement if there is no disassembly and no fire during the test and within seven days after the test.

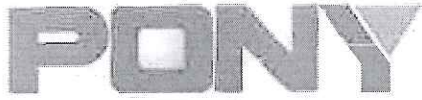
T.8 Forced discharge

Each cell shall be forced discharged at ambient temperature by connecting it in series with a 12V D.C. power supply at an initial current equal to the maximum discharge current specified by the manufacturer.

The specified discharge current is to be obtained by connecting a resistive load of the appropriate size and rating in series with the test cell. Each cell shall be forced discharged for a time interval (in hours) equal to its rated capacity divided by the initial test current (in ampere).

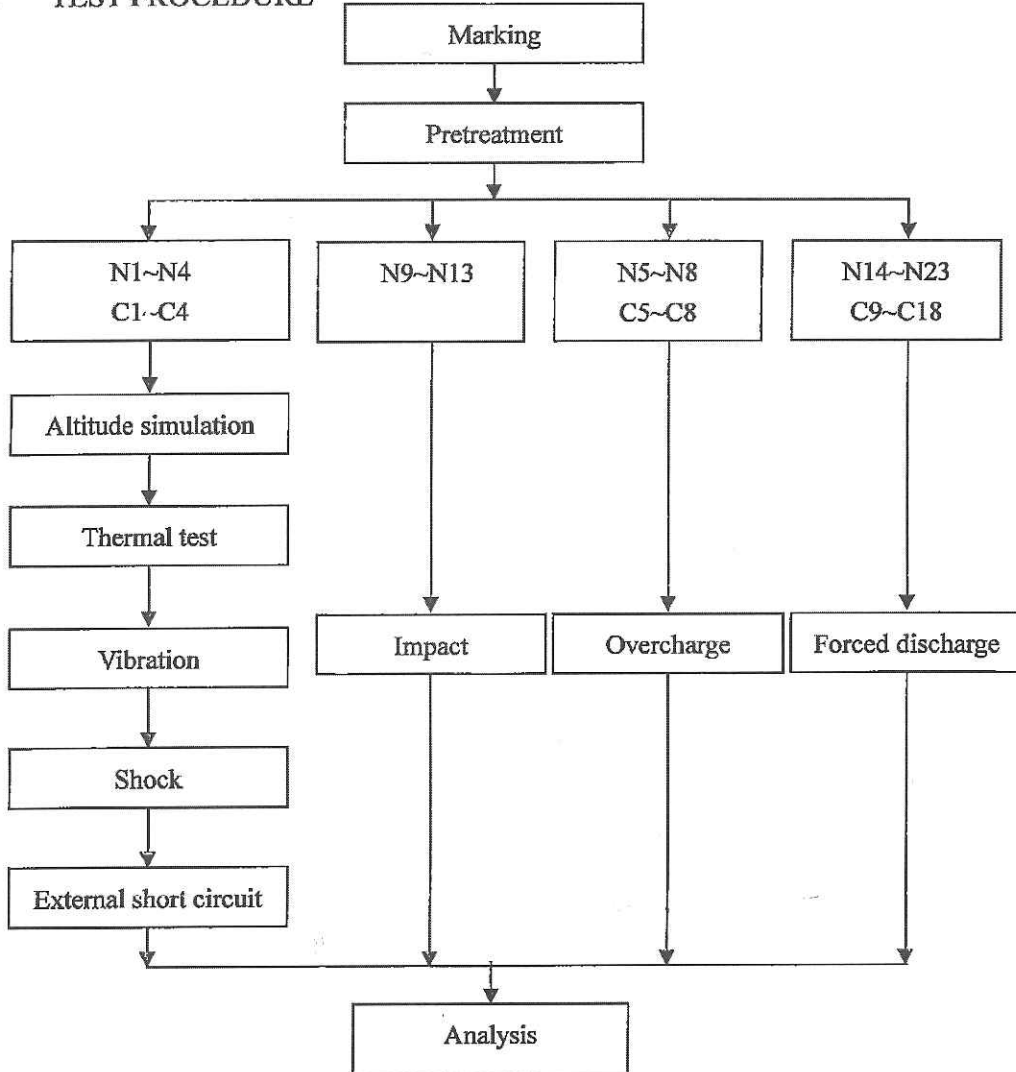
Primary or rechargeable cells meet this requirement if there is no disassembly and no fire during the test and within seven days after the test.

www.ponytest.com ☎Hotline 400-819-5688



Pony Testing International Group

VII、 TEST PROCEDURE



VIII、 MAIN TEST APPARATUS

- IE199 High precision battery test instrument
- IE338 vibration test instrument
- IE130 Digital multimeter
- IE603 high precision DC regulated power supply
- IE604 Temperature control circuit tester
- IE386 DC regulated power supply
- IE602 Battery weight impact testing machine

- IE601 Vacuum chamber
- IE 176 Electronic platform scale
- IE128 Shock test instrument
- IE230 Thermoelectric pair
- IE608 Rapid temperature

www.ponytest.com ☎Hotline 400-819-5688



北京实验室: (010) 82618116 长春实验室: (0431) 85150908 上海实验室: (021) 64851999 深圳实验室: (0755) 26050909
 青岛实验室: (0532) 88706866 大连实验室: (0411) 84650820 宁波实验室: (0574) 87736199 广州实验室: (020) 89224310
 天津实验室: (022) 27360730 郑州实验室: (0371) 69350670 杭州实验室: (0571) 87219096 武汉实验室: (027) 83997127



Pony Testing International Group

IX、 DATA

1. Altitude simulation

No.	Pre-test		After test		Mass loss (%)	Voltage loss (%)	Whether leakage, venting, disassembly, rupture, fire (Y/N)
	Mass (g)	Voltage (V)	Mass (g)	Voltage (V)			
N1	1009.17	4.91	1009.12	4.91	0.00	0.00	N
N2	1011.86	4.90	1011.81	4.89	0.00	0.20	N
N3	1009.46	4.93	1009.41	4.93	0.00	0.00	N
N4	1006.72	4.89	1006.64	4.89	0.00	0.00	N
C1	1009.59	4.89	1009.56	4.89	0.00	0.00	N
C2	1009.98	4.92	1009.95	4.92	0.00	0.00	N
C3	1007.90	4.90	1007.85	4.88	0.00	0.41	N
C4	1009.58	4.90	1009.54	4.89	0.00	0.20	N

2. Thermal test

No.	Pre-test		After test		Mass loss (%)	Voltage loss (%)	Whether leakage, venting, disassembly, rupture, fire (Y/N)
	Mass (g)	Voltage (V)	Mass (g)	Voltage (V)			
N1	1009.12	4.91	1008.29	4.83	0.08	1.63	N
N2	1011.81	4.89	1010.95	4.81	0.08	1.64	N
N3	1009.41	4.93	1008.49	4.85	0.09	1.62	N
N4	1006.64	4.89	1005.81	4.79	0.08	2.04	N
C1	1009.56	4.89	1008.81	4.80	0.07	1.84	N
C2	1009.95	4.92	1009.22	4.83	0.07	1.83	N
C3	1007.85	4.88	1006.97	4.84	0.09	0.82	N
C4	1009.54	4.89	1008.80	4.82	0.07	1.43	N

www.ponytest.com ☎Hotline 400-819-5688



Pony Testing International Group

3. Vibration

No.	Pre-test		After test		Mass loss (%)	Voltage loss (%)	Whether leakage, venting, disassembly, rupture, fire (Y/N)
	Mass (g)	Voltage (V)	Mass (g)	Voltage (V)			
N1	1008.29	4.83	1008.29	4.82	0.00	0.21	N
N2	1010.95	4.81	1010.93	4.81	0.00	0.00	N
N3	1008.49	4.85	1008.48	4.83	0.00	0.41	N
N4	1005.81	4.79	1005.81	4.79	0.00	0.00	N
C1	1008.81	4.80	1008.81	4.80	0.00	0.00	N
C2	1009.22	4.83	1009.20	4.82	0.00	0.21	N
C3	1006.97	4.84	1006.97	4.83	0.00	0.21	N
C4	1008.80	4.82	1008.80	4.82	0.00	0.00	N

4. Shock

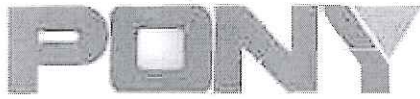
No.	Pre-test		After test		Mass loss (%)	Voltage loss (%)	Whether leakage, venting, disassembly, rupture, fire (Y/N)
	Mass (g)	Voltage (V)	Mass (g)	Voltage (V)			
N1	1008.29	4.82	1008.29	4.81	0.00	0.21	N
N2	1010.93	4.81	1010.93	4.81	0.00	0.00	N
N3	1008.48	4.83	1008.48	4.83	0.00	0.00	N
N4	1005.81	4.79	1005.81	4.79	0.00	0.00	N
C1	1008.81	4.80	1008.81	4.80	0.00	0.00	N
C2	1009.20	4.82	1009.20	4.82	0.00	0.00	N
C3	1006.97	4.83	1006.97	4.83	0.00	0.00	N
C4	1008.80	4.82	1008.80	4.82	0.00	0.00	N

www.ponytest.com

☎Hotline 400-819-5688

PONY 谱尼测试
Pony Testing International Group

北京实验室: (010) 72618116 长春实验室: (0431) 85150908 上海实验室: (021) 64851999 深圳实验室: (0755) 26050909
 青岛实验室: (0532) 88706866 大连实验室: (0411) 84650820 宁波实验室: (0574) 87736499 广州实验室: (020) 89224310
 天津实验室: (022) 27360730 郑州实验室: (0371) 69350670 杭州实验室: (0571) 87219096 武汉实验室: (027) 83997127



Pony Testing International Group

5. External short circuit

No.	Peak temperature (°C)	Whether disassembly, rupture, fire (Y/N)
N1	55.5	N
N2	55.9	N
N3	55.6	N
N4	55.4	N
C1	55.7	N
C2	55.8	N
C3	55.3	N
C4	55.4	N

6. Impact

No.	Peak temperature (°C)	Whether disassembly, fire (Y/N)
N9	48.6	N
N10	52.7	N
N11	58.9	N
N12	73.5	N
N13	61.5	N

7. Overcharge

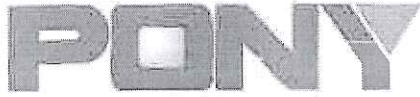
No.	Whether disassembly, fire (Y/N)
N5	N
N6	N
N7	N
N8	N
C5	N
C6	N
C7	N
C8	N

www.ponytest.com

☎Hotline 400-819-5688

PONY 谱尼测试
Pony Testing International Group

北京实验室: (010) 82618115 长春实验室: (0431) 85150908 上海实验室: (021) 64851999 深圳实验室: (0755) 26050909
青岛实验室: (0532) 88706866 大连实验室: (0411) 84650820 宁波实验室: (0574) 87736499 广州实验室: (020) 89224310
天津实验室: (022) 27360730 郑州实验室: (0371) 69350670 杭州实验室: (0571) 87219096 武汉实验室: (027) 83997127



Pony Testing International Group

8. Forced discharge

No.	Whether disassembly, fire (Y/N)
N14	N
N15	N
N16	N
N17	N
N18	N
N19	N
N20	N
N21	N
N22	N
N23	N
C9	N
C10	N
C11	N
C12	N
C13	N
C14	N
C15	N
C16	N
C17	N
C18	N

*** End of report ***

The original English report which report No. is MZIPS4NS02192021 be replaced by this report, and it will be canceled immediately and doesn't have any legal validity. Please compliance with this report.

May 15, 2015

www.ponytest.com ☎Hotline 400-819-5688

PONY 谱尼测试
Pony Testing International Group

北京实验室: (010) 62618116 长春实验室: (0431) 85150908 上海实验室: (021) 64851999 深圳实验室: (0755) 26050909
青岛实验室: (0532) 88706866 大连实验室: (0411) 84650820 宁波实验室: (0574) 87736499 广州实验室: (020) 29224310
天津实验室: (022) 27360730 郑州实验室: (0371) 69350670 杭州实验室: (0571) 87219096 武汉实验室: (027) 83997127



Pony Testing International Group

No.: MDIPQBCN53738747

Certificate

According to the United Nations "Recommendation on the Transport of Dangerous Goods, Manual of Test and Criteria" (Rev.5, amend.1 & amend.2) of clause 38.3.2.2, the difference between lithium battery BCL1B1 and lithium battery 112315 provided by PELLENC SA is only the label text, so under the condition that lithium battery BCL1B1 is not tested, its transportation safety may refer to the UN38.3 test result from test report MZIPS4NS02192021a of lithium battery 112315 provided by our company.

Sample information

Sample Model:	112315	BCL1B1
Trade mark:	/	/
Nominal Voltage:	43.2V	43.2V
Rated Capacity:	3.3Ah/3.45Ah(Rated / Max) 143Wh/150Wh(Rated / Max)	3.3Ah/3.45Ah(Rated / Max) 143Wh/150Wh(Rated / Max)
Manufacturer:	DongGuan PELLENC Electrical&Mechanical Co.,Ltd.	DongGuan PELLENC Electrical&Mechanical Co.,Ltd.

This certificate does not cover batteries of other models except the above model; This certificate must be used in conjunction with the referenced original UN38.3 test report. Only the original certificate is valid.

Special Stamp of PONY



www.ponytest.com

☎Hotline 400-819-5688

PONY 谱尼测试
Pony Testing International Group

北京实验室: (010) 82618116 长春实验室: (0431) 85150908 上海实验室: (021) 64851999 深圳实验室: (0755) 26050909
青岛实验室: (0532) 88706866 大连实验室: (0411) 84650820 宁波实验室: (0574) 87736499 广州实验室: (020) 89224310
天津实验室: (022) 27360730 郑州实验室: (0371) 69350670 杭州实验室: (0571) 87219096 武汉实验室: (027) 83997127



PONY

Pony Testing International Group

No.: MDIPQBCN53738747

Photo:

Sample Model: 112315



Sample Model: BCL1B1



The page below is blank

www.ponytest.com

☎Hotline 400-819-5688

PONY 谱尼测试

Pony Testing International Group

 北京实验室: (010) 82618116
 青岛实验室: (0532) 88706866
 天津实验室: (022) 27360730
 新疆实验室: (0991) 6684186

 长春实验室: (0431) 85150908
 哈尔滨实验室: (0451) 88104561
 大连实验室: (0411) 84650820
 郑州实验室: (0371) 69350670

 上海实验室: (021) 64851999
 宁波实验室: (0574) 87736499
 杭州实验室: (0571) 87219096
 苏州实验室: (0512) 62997900

 深圳实验室: (0755) 26050909
 广州实验室: (020) 89224310
 武汉实验室: (027) 83997127
 厦门实验室: (0592) 5568048