



# GFK-Schneeschaufel

## Demontage und Montage der Alukante

<b>D</b>	<b>GFK-Schneeschaufel</b> Demontage und Montage der Alukante	<b>Deutsch</b>	<b>2-3</b>
<b>GB</b>	<b>GFK snow shovel</b> Removing and installing the aluminium edge	<b>English</b>	<b>4-5</b>
<b>F</b>	<b>Poussoir à neige PFV</b> Démontage et montage de la racle en alu	<b>Français</b>	<b>6-7</b>



## Benötigtes Material

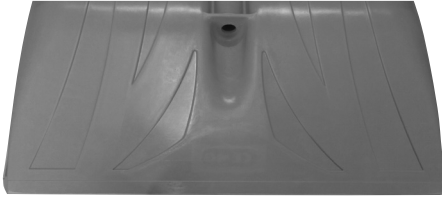


Holzkeil

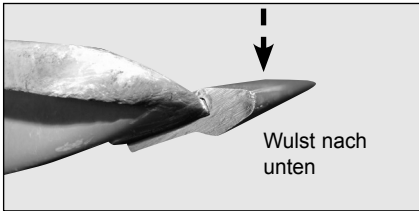


Feinschleifpapier

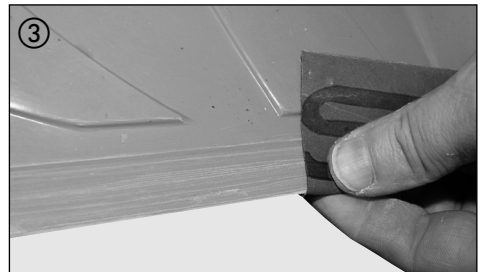
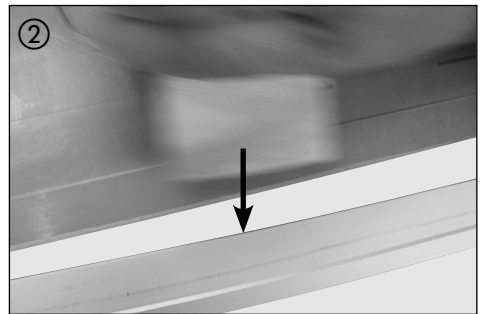
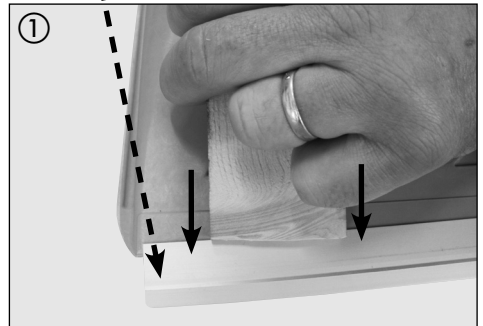
Schneeschaufel

Gummi-  
hammer

neue Alukante

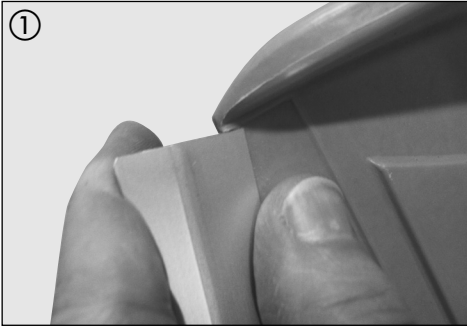
Wulst nach  
unten

## Demontage



Klemmbereich mit Feinschleifpapier leicht  
anschleifen.

## Montage



① Leiste vorsichtig aufstecken.  
Ecke nicht hochbiegen.



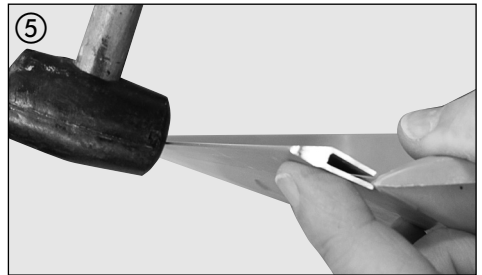
② Mittels Gummihammer die Leiste mit leichten Schlägen befestigen.



③ Dabei Nut und GFK-Kante zueinander positionieren.



④ Auf die richtige Position der Leiste achten.



⑤ Leiste muss über die Kante einschnappen  
(kein Versatz).



### Wichtig!

*Bei unsachgemäßer Anwendung (schrägem Aufsetzen) kann die Schaufel beschädigt/unbrauchbar werden!*

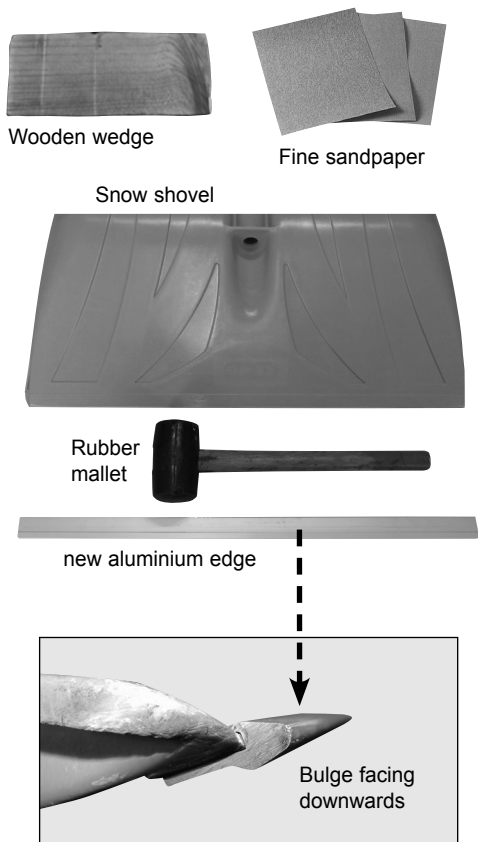
## Fertig montierte Alukante



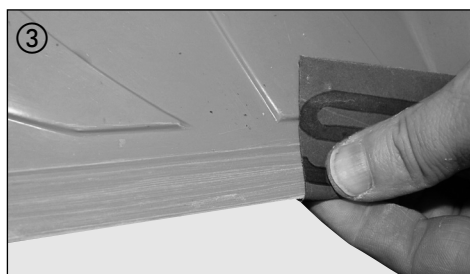
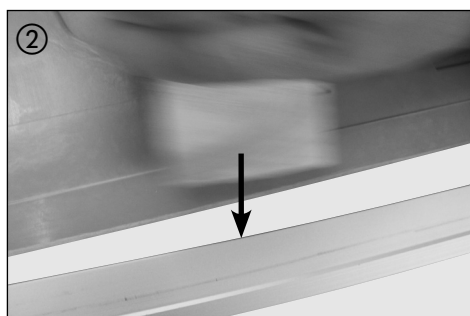
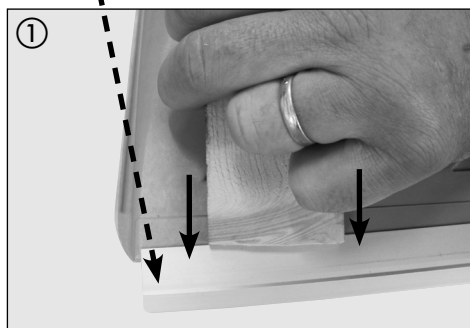
### Anmerkung!

*Die Alukante hält durch Klemmkraft!*

## Material required

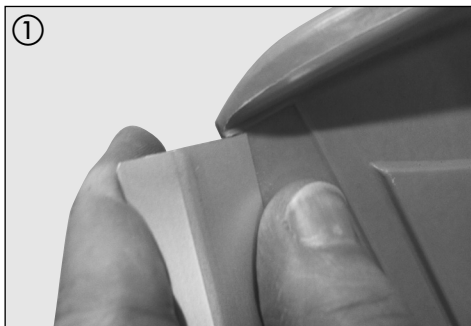


## Removal



Lightly sand the clamping area with fine sandpaper.

## Installation



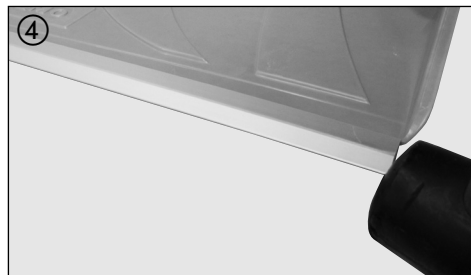
① Carefully mount the bar.  
Do not bend corner up.



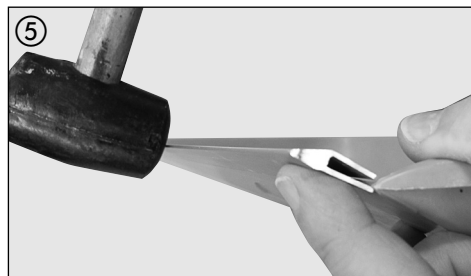
② Secure the bar in place by tapping it gently with the rubber mallet.



③ In doing so, align the groove and the GRP edge.



④ Pay attention to the correct position of the bar.



⑤ Bar must snap in over the edge  
(no displacement).



### Important!

*Improper use (angled mounting) can damage the shovel or render it unusable!*

## Assembled aluminium edge



### Note!

*The aluminium edge is held in place through clamping force!*

## Matériel requis

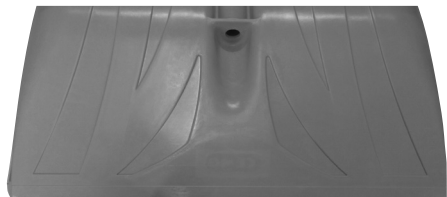


Cale en bois

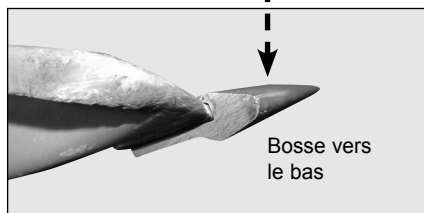


Papier abrasif à grain fin

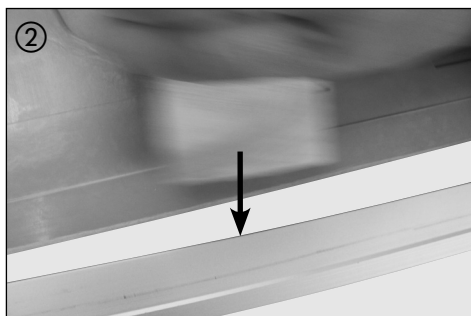
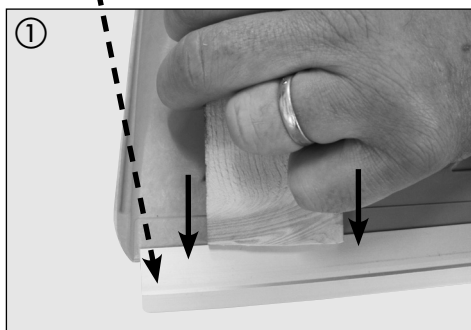
Poussoir à neige

Marteau en  
caoutchouc

Racle en aluminium neuve

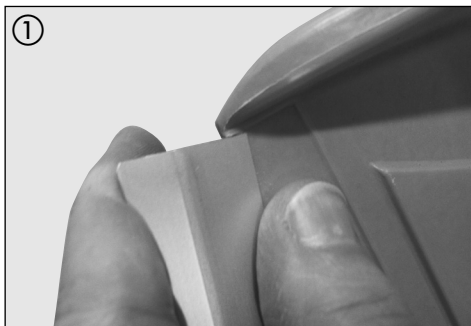
Bosse vers  
le bas

## Démontage



Poncer légèrement la zone de serrage avec du papier abrasif à grain fin.

## Montage



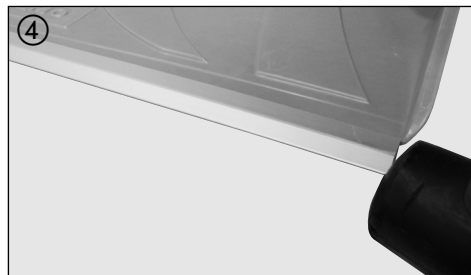
① Installer la racle avec précaution.



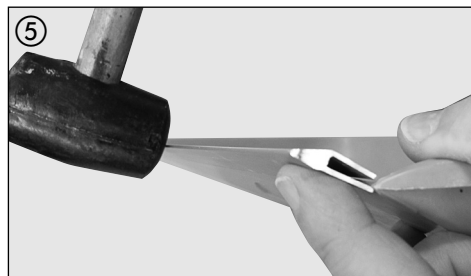
② Fixer la racle en donnant de légers coups avec un marteau en caoutchouc.



③ Bien positionner la rainure et la racle PFV l'une par rapport à l'autre.



④ Veiller à positionner correctement la racle.



⑤ La racle doit bien s'enclencher sur le bord (pas de décalage).



### Important !

*En cas d'application incorrecte (pose de biais), le poussoir peut être endommagé ou devenir inutilisable !*

## Racle en aluminium posée



### Remarque !

*La racle en aluminium est maintenue par l'effort de serrage !*

