

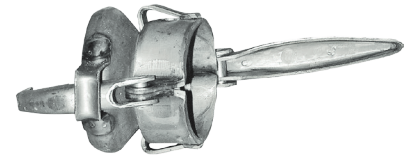
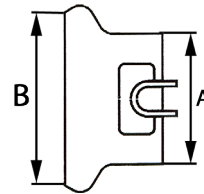
Perrot-System

Beim Perrot-System sind die Hebel an einem beweglichen Ring am M-Teil montiert.

Das V-Teil hat einen Konus und besteht aus einem Teil.

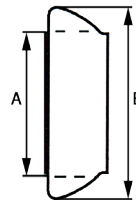
Kardan-Becher zum Anschweißen

NW	Zoll	A	B
50	2"	50 mm	74,5 mm
70	2,5"	70 mm	98,5 mm
89	3,5"	89 mm	126,0 mm
108	4"	108 mm	145,5 mm
133	5"	133 mm	171,5 mm
159	6"	159 mm	203,5 mm
216	8"	216 mm	287,0 mm



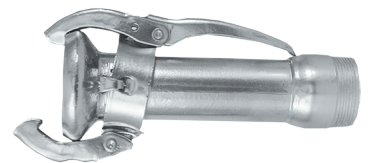
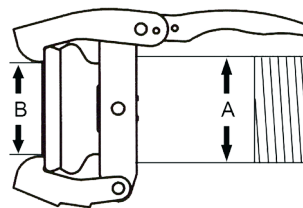
V-Teil zum Anschweißen

NW	Zoll	A	B
50	2"	50 mm	75,0 mm
76	3"	70 mm	102,5 mm
89	3,5"	89 mm	134,0 mm
108	4"	108 mm	155,5 mm
133	5"	133 mm	179,0 mm
159	6"	159 mm	211,0 mm
194	8"	216 mm	312,5 mm



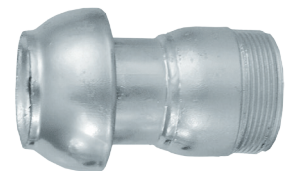
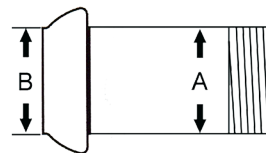
M-Teil mit Außengewinde

NW	Zoll	A	B
50	2" x 1,5"	48,3 mm	74,5 mm
50	2"	60,3 mm	74,5 mm
70	2,5"	76,1 mm	98,5 mm
89	3,5" x 2,5"	76,1 mm	126,5 mm
89	3,5" x 3"	88,9 mm	126,5 mm
108	4"	114,3 mm	145,5 mm
133	5"	139,7 mm	171,5 mm
159	6"	165,1 mm	203,5 mm



V-Teil mit Außengewinde

NW	Zoll	A	B
50	2" x 1,5"	48,3 mm	50,0 mm
50	2"	60,3 mm	50,0 mm
70	2,5"	76,1 mm	70,0 mm
89	3,5" x 2,5"	76,1 mm	89,0 mm
89	3,5" x 3"	88,9 mm	89,0 mm
108	4"	114,3 mm	108,0 mm
133	5"	139,7 mm	133,0 mm
159	6"	165,1 mm	159,0 mm



O-Ring

NW	Zoll	A	B
50	2"	87,0 mm	11,0 mm
76	3"	108,5 mm	11,5 mm
89	3,5"	139,0 mm	14,0 mm
108	4"	160,0 mm	18,0 mm
133	5"	190,0 mm	20,0 mm
133	5"	190,0 mm	22,0 mm
159	6"	222,0 mm	20,0 mm
159	6"	222,0 mm	22,0 mm
216	8"	306,0 mm	25,0 mm

