

beurer

HD 150 XXL Cosy Taupe

HD 150 XXL Nordic Taupe



HD 150 XXL Cosy Taupe



HD 150 XXL Nordic Taupe



EN Heated Throw
Instruction for Use





Read these instructions for use carefully. Observe the warnings and safety notes. Keep these instructions for use for future reference. Make the instructions for use accessible to other users. If the device is passed on, provide the instructions for use to the next user as well.







Contents

| | | | |
|--|---|--------------------------------------|---|
| 1. Items included in the package | 3 | 4.4 Setting the temperature | 6 |
| 1.1 Description | 3 | 4.5 Automatic switch-off | 6 |
| 2. Important instructions | | 4.6 Switching off | 6 |
| Retain for future use | 3 | 5. Cleaning and maintenance | 6 |
| 3. Intended use | 5 | 6. Storage | 7 |
| 4. Operation | 5 | 7. Disposal | 7 |
| 4.1 Safety | 5 | 8. What if there are problems? | 7 |
| 4.2 Initial use | 6 | 9. Technical data | 7 |
| 4.3 Switching on | 6 | 10. Guarantee/service | 7 |

Explanation of symbols

The following symbols are used on the device, in these instructions for use, on the packaging and on the type plate for the device:

| | | | |
|--|--|--|---|
| | WARNING: Warning of risks of injury or health hazards | | |
| | CAUTION: Safety information about possible damage to appliance/accessories | | |
| | NOTE: Important information | | |
| | Read the instructions | | Do not insert pins |
| | Do not use folded or rucked | | Not to be used by very young children (0 - 3 years) |
| | Manufacturer | | |
| | The device has double protective insulation and therefore complies with protection class 2. | | |
| | Please dispose of the device in accordance with EC Directive – WEEE (Waste Electrical and Electronic Equipment). | | |
| | Marking to identify the packaging material. A = Material code, B = Material number: 1-7 = Plastics, 20-22 = Paper and cardboard | | |
| | Separate the product and packaging elements and dispose of them in accordance with local regulations. | | |
| | This product satisfies the requirements of the applicable European and national directives. | | |

| | | | |
|---|--|---|------------------------------|
| UK CA | United Kingdom Conformity Assessed Mark | | |
| EAC | The products demonstrably meet the requirements of the technical Regulations of the EAEU. | | |
|  | The textiles used for this device meet the stringent human ecological requirements of Oeko Tex Standard 100, as verified by Hohenstein Research Institute. | | |
|  | Wash at a maximum temperature of 30 °C, Very gentle wash |  | Do not iron |
| | |  | Do not bleach |
|  | Do not dry-clean |  | Do not dry in a tumble dryer |

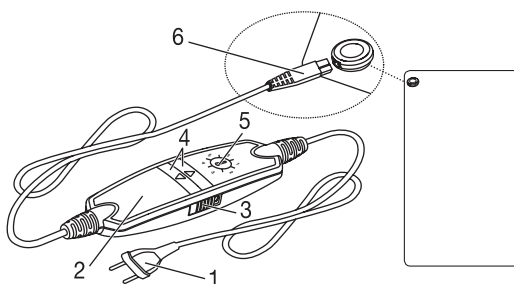
1. Items included in the package

Check that the device packaging has not been tampered with and make sure that all contents are present. Before use, ensure that there is no visible damage to the device or accessories and that all packaging material has been removed. If you have any doubts, do not use the device and contact your retailer or the specified Customer Services address.

- 1 Heated Throw
- 1 Control
- 1 Instructions for use

1.1 Description

- 1. Mains plug
- 2. Control
- 3. Sliding switch (ON = I / OFF = 0)
- 4. Buttons for setting temperature
- 5. Illuminated display for temperature settings
- 6. Plug-in coupling



2. Important instructions

Retain for future use

WARNING

- Non-observance of the following instructions may result in personal injury or material damage (electric shock, skin burns, fire). The following safety and hazard information is not only intended to protect your health and the health of others, it should also protect the product. For this reason, pay attention to these safety notes and include these instructions when handing over the product to others.
- This heated throw must not be used by persons who are not sensitive to heat or by other vulnerable persons who may not be able to react to overheating (e.g. diabetics, people with skin alterations due to illness or scarred tissue in the application area, after taking pain relief medication or alcohol).

- This heated throw must not be used by very young children (0-3 years old) as they are unable to respond to overheating.
- The heated throw can be used by children older than 3 and younger than 8 years of age provided they are supervised. For this, the control must always be set to the minimum temperature.
- This heated throw may be used by children over the age of 8 and by people with reduced physical, sensory or mental skills or a lack of experience or knowledge, provided that they are supervised or have been instructed on how to use the heated throw safely, and are fully aware of the consequent risks of use.
- Children must not play with the heated throw.
- Cleaning and user maintenance must not be performed by children unless supervised.
- This heated throw is not designed for use in hospitals.
- This heated throw is only intended for domestic/private use, not for commercial use.
- Do not insert pins.
- Do not use folded or rucked.
- Do not use if wet.
- This heated throw may only be used in conjunction with the control specified on the label.
- The heated throw must only be connected to the mains voltage that is specified on the label.
- If the heated throw is being used over several hours, we recommend that you set the lowest temperature setting on the control to avoid the body overheating and thereby any potential burns to the skin or heat stroke.
- The electrical and magnetic fields emitted by this heated throw may interfere with the function of a pacemaker. However, they are still well within the limits: electrical field strength: max. 5000 V/m, magnetic field strength: max. 80 A/m, magnetic flux density: max. 0.1 millitesla. Please consult your doctor and the manufacturer of your pacemaker before using this heated throw.
- Do not pull, twist or make sharp bends in the cables.
- If the cable and control are not positioned properly, there may be a risk of becoming entangled in, being strangled by, tripping over, or stepping on the cable and control of this heated throw. The user must ensure that excess lengths of cable, and cables in general, are safely routed.
- Please check this heated throw frequently for signs of wear and tear or damage. If any such signs are evident, if the heated throw has been used incorrectly or if it no longer heats up, it must be checked by the manufacturer before being switched on again.

- Under no circumstances should you open or repair the heated throw (including the accessories) yourself because faultless functionality can no longer be guaranteed thereafter. Failure to observe this will invalidate the guarantee.
- If the mains connection cable of this heated throw is damaged, it must be disposed of. If it cannot be removed, the heated throw must be disposed of.
- Do not expose control and cables to direct sunlight.
- When this heated throw is switched on:
 - Do not place any sharp objects on it.
 - Do not place any heat sources, such as hot water bottles, heat pads or similar, on it.
- The electronic components in the control warm up when the heated throw is in use. For this reason, the control must never be covered or placed on the heated throw when it is in use.
- Allow the heated overblanket to cool down before storing it away. Otherwise the heated overblanket may get damaged.
- To avoid severe creasing in the heated overblanket, do not place any objects on top of it while it is being stored. Otherwise the heated overblanket may get damaged.
- It is essential to observe the information relating to the following chapters: Operation, Cleaning and maintenance, Storage.
- If you should have any questions about using our devices, please contact Customer Services.

3. Intended use



CAUTION

This heated throw is only designed to warm up the human body.

4. Operation

4.1 Safety

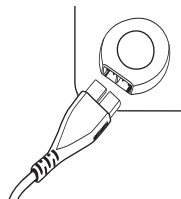


CAUTION

- The heated throw is fitted with the SAFETY SYSTEM. This electronic sensor technology provides protection against overheating across the entire surface of the heated throw with an automatic switch-off if there is a fault.
- Please note that, for safety reasons, the heated throw can no longer be operated after a fault has occurred and must be sent to the specified service address.
- Do not connect the defective heated throw with another control of the same type. This would trigger a permanent switch-off via the control safety system.

4.2 Initial use

- First, connect the control to the heated throw by inserting the plug-in coupling.
- Then plug the mains plug into the socket.



4.3 Switching on

Set the sliding switch (3) on the right side of the control to the setting “I” (ON) – see image of control.

When switched on, the temperature settings display is lit up (5).

4.4 Setting the temperature

To increase the temperature, press the Δ button (4). To decrease the temperature, press the ∇ button (4).

Level 0: OFF

Level 1: minimum heat

Setting 2 - 5: individual heat setting

Level 6: maximum heat



NOTE

The fastest way to warm up the heated throw is to initially set the highest temperature setting.



WARNING

If the heated throw is being used over several hours, we recommend that you set the lowest temperature setting on the control to avoid the body overheating and thereby any potential burns to the skin or heat stroke.

4.5 Automatic switch-off

This heated throw switches itself off automatically after 3 hours. The temperature settings display flashes after the blanket is switched off.

To switch on the heated throw again, first set the side ON/OFF sliding switch on the control to the OFF (0) position for 5 seconds. After about 5 seconds it is possible to switch it on again.

4.6 Switching off

To switch the heated throw off, set the sliding switch on the side of the control to setting “0” (OFF). The temperature settings display is no longer illuminated.



NOTE

If the heated throw is not in use, set the slide switch on the side to ON/OFF to level “0” (OFF) and pull the mains plug out of the socket. Then disconnect the control from the heated throw by unplugging the plug-in coupling.

5. Cleaning and maintenance



WARNING

Before cleaning, always remove the mains plug from the socket first. Then disconnect the control from the heated throw by unplugging the plug-in coupling. Otherwise there is a risk of electric shock.



CAUTION

The control must never come into contact with water or other liquids, as this may cause damage.

- To clean the control, use a dry, lint-free cloth. Do not use any chemical or abrasive cleaning agents.
- Small marks on the heated throw can be removed with a damp cloth or sponge and, if necessary, with a little liquid detergent for delicate laundry.



CAUTION

Please note that the heated throw may not be chemically cleaned, wrung out, tumble dried, put through a mangle or ironed.

- This heated throw is machine-washable.
- Set the washing machine to a particularly gentle wash cycle at 30 °C (wool cycle). Use a delicate laundry detergent and measure it out according to the manufacturers instructions.



CAUTION

Please note that frequent washing of the heated throw has a negative effect on the product. The heated throw should therefore be washed in a washing machine a maximum of 5 times during its life.

- Immediately after washing, reshape the heated throw to its original dimensions while it is still wet and spread it out flat over a clothes horse to dry.



CAUTION

- Do not use pegs or similar items to attach the heated throw to the clothes horse. Failure to do so may damage the heated throw.
- Do not reconnect the control to the heated throw until the plug-in connector and heated throw are completely dry. Failure to do so may damage the heated throw.



WARNING

Never switch the heated throw on to dry it! Otherwise there is a risk of electric shock.

6. Storage

If you do not plan to use the heated throw for a long period of time, we recommend that you store it in the original packaging. For this purpose, disconnect the control from the heated throw by unplugging the plug-in coupling.

7. Disposal

For environmental reasons, do not dispose of the device in the household waste at the end of its useful life. Dispose of the unit at a suitable local collection or recycling point. Dispose of the device in accordance with EC Directive – WEEE (Waste Electrical and Electronic Equipment). If you have any questions, please contact the local authorities responsible for waste disposal.



8. What if there are problems?

| Problem | Cause | Solution |
|--|--|--|
| The temperature settings are not illuminated while <ul style="list-style-type: none"> - the control is properly connected to the heated throw - the mains plug is connected to a working socket - the side sliding switch on the control is set to setting "I" (ON) | The safety system has switched the heated throw off permanently. | Send the heated throw and the control for servicing. |

9. Technical data

See the type plate label on the heated throw.

10. Guarantee/service

Further information on the guarantee and guarantee conditions can be found in the guarantee leaflet supplied.



UK-Importer: Beurer UK Ltd.
Suite 16, Stonecross Place • Stonecross Lane North • WA3 2SH Lowton • United Kingdom



Beurer GmbH • Söflinger Str. 218 • 89077 Ulm, Germany • www.beurer.com
www.beurer-gesundheitsratgeber.com • www.beurer-healthguide.com



HD150XXL_2024-08-29_06_IM2_BEU_EN

Subject to errors and changes