

beurer

# ICONIC PRO

HAIR DRYER & STYLER | HC 150



**FAST DRYING**  
+ professional styling



**COMPACT**  
+ ideal for travel



**DIGITAL MOTOR**  
1600 Watt

Powerful 1600 W digital motor

Ultra light weight - only 365 g without cable, 570 g with cable

3 temperature settings and 3 blower settings for gentle drying

Additional cold air setting for fixing the styling

Integrated ionic function for smooth hair

Integrated memory function - used to store preset temperature and fan settings

Removable filter, for easy cleaning

Narrow, magnetic styling attachments for an easy change of the attachment

Automatic filter cleaning function

Hanging loop for convenient storage

Compact design

Cable length: 1,80 m

Impresses with lightness and ergonomics

Product measurements (LxBxH): 19,6 \* 25,7 \* 5,6 cm

3 year guarantee

Sales Unit: 4 / Shipping Carton: -

EAN-No.: 4211125104849

Art.-No.: 104.84

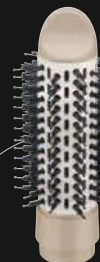
## 4 DIFFERENT STYLES



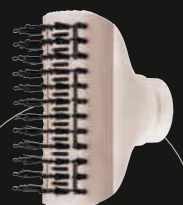
**PROFESSIONAL NOZZLE:**  
Excellent and high-performance hair drying



**VOLUME DIFFUSER:**  
Highlight your natural curls



**ROUND BRUSH:**  
Boost the volume



**ANTI-FRIZZ STYLING BRUSH:**  
Create smooth, straight hairstyles

Subject to errors and changes

104.84\_HCI50\_2025-01-28\_01\_DS\_EN\_BEU