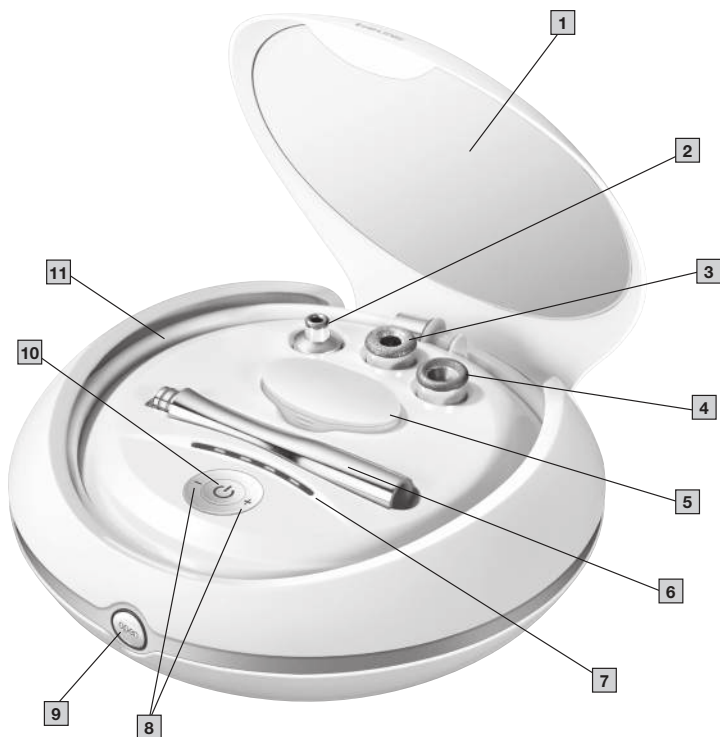
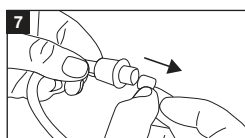
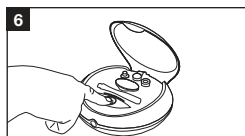
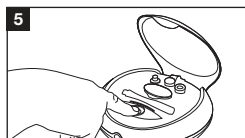
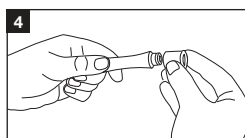
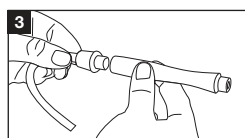
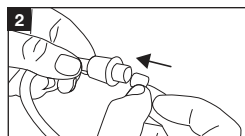
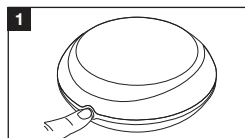




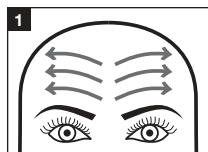
EN Pureo Derma Peel microdermabrasion
Instructions for use 4



A



B





Read these instructions for use carefully and keep them for later use, be sure to make them accessible to other users and observe the information they contain.

! WARNING

- The device is only intended for domestic/private use, not for commercial use.
- This device is not suitable for persons under the age of 18.
- This device may be used by people with reduced physical, sensory or mental skills or a lack of experience or knowledge, provided that they are supervised or have been instructed on how to use the device safely and are fully aware of the consequent risks of use.
- Children must not play with the device.
- Cleaning and user maintenance must not be performed by children unless supervised.
- If the mains connection cable of this device is damaged, it must be disposed of. If it cannot be removed, the device must be disposed of.
- Under no circumstances should you open or repair the device yourself, as faultless functionality can no longer be guaranteed thereafter. Failure to comply will invalidate the warranty.

Table of contents

1. Included in delivery	5	8. Cleaning and maintenance.....	8
2. Signs and symbols	5	9. Accessories and replacement parts.....	9
3. Intended use.....	6	10. Frequently asked questions	9
4. Warnings and safety notes.....	6	11. What if there are problems?	9
5. Device description.....	7	12. Disposal.....	10
6. Initial use	7	13. Technical specifications	10
7. Usage	7	14. Warranty / Service	10


















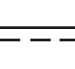
1. INCLUDED IN DELIVERY




Check that the exterior of the cardboard delivery packaging is intact and make sure that all contents are present. Before use, ensure that there is no visible damage to the device or accessories and that all packaging material has been removed. If you have any doubts, do not use the device and contact your retailer or the specified Customer Service address.

- 1 x FC 100 base station
- 1 x hand-held device
- 1 x precision attachment
- 1 x coarse attachment
- 1 x large attachment
- 20 x single-use filter
- 1 x mains adapter
- These instructions for use

2. SIGNS AND SYMBOLS

The following symbols are used on the device, in these instructions for use, on the packaging and on the type plate for the device:

	Warning Warning instruction indicating a risk of injury or damage to health		Manufacturer
	Important Safety note indicating possible damage to the device/accessory		Product information Note on important information
	Danger The device must not be used near to water or in water (e.g. in a wash basin, or in the shower or bath) – risk of electric shock!		Certification symbol for products that are exported to the Russian Federation and members of the CIS
	Read the instructions		Separate the packaging elements and dispose of them in accordance with local regulations.
	Marking to identify the packaging material. A = Material code, B = Material number: 1-7 = Plastics, 20-22 = Paper and cardboard		Separate the product and packaging elements and dispose of them in accordance with local regulations.
	United Kingdom Conformity Assessed Mark		Importer symbol
	Protection class II device The device is double-protected and thus corresponds to protection class 2		CE labelling This product satisfies the requirements of the applicable European and national directives.
	Disposal in accordance with the Waste Electrical and Electronic Equipment EC Directive – WEEE		Only use indoors.
	Power supply unit, switch mode; switch mode power supply unit; SMPS		Direct current The device is suitable for use with direct current only

	Safety isolating transformer, short-circuit proof		Polarity of d.c. power connector
	Energy efficiency level 6	IP20	Protected against solid foreign objects 12.5 mm in diameter and larger

3. INTENDED USE

The device is only to be used on the face (apart from the eye area and mouth) of adults. Do not use the device on animals!

The device is only intended for the purpose described in these instructions for use. The manufacturer is not liable for damage resulting from improper or careless use.

4. WARNINGS AND SAFETY NOTES

WARNING

- Danger of suffocation by packaging material. Keep packaging material away from children.
- Before use, inspect the device and accessories for visible damage. If you have any doubts, do not use the device and contact your retailer or the specified Customer Services address.
- Keep the mains adapter away from water.



DANGER

This device must not be used near to water or in water (e.g. in a wash basin, or in the shower or bath) – risk of electric shock!

WARNING

Do **NOT** use the device

- on cracked skin
- on open wounds
- in the eye area or on the mouth
- on any part of the body other than the face (except for eye area and mouth)
- if you have a skin disease (e.g. herpes, vascular diseases or skin growths)
- if you have skin cancer
- if you are suffering from skin irritation
- immediately after sunbathing or if you have sunburn
- if you are taking medication that contains steroids
- if you are taking blood thinners
- if you have multiple sclerosis, diabetes or an autoimmune disorder

WARNING

For this reason, the device must only be operated as follows only with the supplied power supply unit at the mains voltage indicated on the power supply unit.

IMPORTANT

Only specialist personnel may perform repairs on electrical devices. Improper repairs may subject users to considerable danger. In the event of a fault or damage, have the device repaired by a certified specialist workshop.

WARNING

- Only use the device in dry rooms (e.g. never in the bath, sauna).

- Never reach for a device that has been submerged in water. Disconnect the mains adapter immediately.
- Do not drop the device or subject it to any impacts.
- Do not clamp or pinch the mains cable.
- Ensure that the mains cable and mains adapter do not come into contact with water, steam or other liquids.

5. DEVICE DESCRIPTION

The associated drawings are shown on page 3.

- | | |
|---|---|
| 1 Mirror | 2 Precision attachment with fine sapphire coating, suitable for precise treatment of small areas (e.g. in nose area) |
| 3 Large attachment with fine sapphire coating, suitable for sensitive skin | 4 Coarse attachment with coarse sapphire coating, suitable for intensive treatment of problem areas |
| 5 Storage box with single-use filters | 6 Hand-held device |
| 7 Intensity level display (level 1-5) | 8 +/- buttons for setting the intensity level |
| 9 Open button | 10 ON/OFF button |
| 11 Tube | |

6. INITIAL USE



Before you start using the device, make sure that your face is clean, dry and free of any traces of products such as powder, cream or make-up.

6.1 Carrying out a skin test

Carry out a skin test 24 hours before using the device. Test the device at the lowest intensity level on small, inconspicuous areas of your neck. If after 24 hours the tested area is red or painful, do not use the device.



WARNING

- Do not use the device more than once a week.
- Immediately after use, the treated skin may be slightly reddened and in very rare cases there may be small spots of bleeding under the skin.
- For one day before and one day after use, avoid activities that cause you to perspire, such as saunas, tanning beds and sun exposure.



The device can also be used twice a week for non-sensitive problem skin (with a break of at least 48 hours between use).

7. USAGE

7.1 Using the device

1. Connect the mains adapter to the device and plug the adapter into the socket.
2. Press the **Open button** to open the device. **A1**
3. Insert a single-use filter into the end of the tube. **A2**
4. Connect the end of the tube to the hand-held device. **A3**

5. Place the attachment you wish to use on the tip of the hand-held device. **A4**
6. Now press the **ON/OFF button** to switch on the device. The intensity level display starts to light up. You are now at the lowest intensity level. **A5**
7. Start the treatment at the lowest intensity level initially. Place the hand-held device on your face and move it over the skin. Make sure that you do not move the hand-held device over one part of the face more than once. Further details on treatment can be found in Section "Application areas".

If the lowest intensity level is not strong enough for you, you can change this by pressing the **-/+ buttons**. **A6**



The pressure you apply when using the device should be comfortable and not painful. Some slight reddening should be expected after use.

8. When you have finished using the device, press the **ON/OFF button** to switch it off and unplug the mains adapter from the socket.
9. Change the single-use filter after every use. To do this, disconnect the hand-held device from the tube. Use tweezers to remove the single-use filter. **A7**

7.2 Application areas



Ensure that the part of your face you are treating is taut when you move the hand-held device over the skin. You can do this by pulling the skin taut to the side or downwards with your free hand.

Forehead **B1**:

Move the hand-held device slowly and evenly outwards from the centre of the forehead. Make sure that you do not treat any part of your skin more than once.

Temples **B2**:

Move the hand-held device outwards towards your hairline. Repeat this to the left and right of the nose. Ensure that the device is at least 1 cm away from your eyes.

Nose **B3**:

Move the hand-held device downwards from the centre at the top of the bridge of your nose. Repeat this to the left and right of the nose.

Cheeks **B4**:

Move the hand-held device outwards across your cheeks.

Around the mouth **B5**:

Move the hand-held device along your upper lip from the centre to the left and right. Move the hand-held device upwards from your bottom lip to the left and right. Make sure that you do not touch your lips.

8. CLEANING AND MAINTENANCE

- Never submerge the device in water or other liquids.
- Disinfect the attachments with a standard disinfectant after each use.
- Change the single-use filter after each use.
- Use a dry cloth to clean the device of any dirt. Do not use any abrasive cleaning products.
- Protect the device from knocks, damp, dust, chemicals, marked temperature fluctuations, and nearby sources of heat (ovens, heaters).

9. ACCESSORIES AND REPLACEMENT PARTS

For replacement parts and additional items visit www.beurer.com or contact the corresponding service address in your country (according to the service address list).

Replacement parts and additional items are also available from retailers.

Designation	Item number and/or order number
20 single-use filters	163.546
Precision attachment	163.557
Coarse attachment	163.556
Large attachment	163.555

10. FREQUENTLY ASKED QUESTIONS

Is the Pureo Derma Peel FC100 suitable for all skin types?

The Pureo Derma Peel FC100 is suitable for all skin types. It can be used on oily, dry and combination skin. It is also suitable for all skin colours.

Is the technology in the Pureo Derma Peel FC100 safe?

The Pureo Derma Peel FC100 is based on safe microdermabrasion technology. This only removes excess skin cells in the very top layer of the skin and does not affect the other skin layers.

Is using the Pureo Derma Peel FC100 painful?

No, use of the Pureo Derma Peel FC100 should be gentle and pain-free. On very sensitive skin, users may experience slight burning in rare cases. If, however, you do experience pain when using the device, reduce the intensity.

How long does a treatment with the Pureo Derma Peel FC100 take?

The length of a treatment can vary depending on the area being treated. A full facial treatment takes approx. 20 minutes.

How often should I use the Pureo Derma Peel FC100?

We recommend using the Pureo Derma Peel FC100 once a week and waiting at least 48 hours between treatments. You can also use the device twice a week on non-sensitive problem skin. A test must be carried out before use. Protect your skin from the sun after use.

What precautions need to be taken after treatment?

Before exposing yourself to the sun, use sun protection for the first three days after a treatment. For the first three days after a treatment DO NOT carry out any mechanical/chemical exfoliation treatment, electrolysis or facial hair removal and DO NOT use hair removal products. You can wear make-up immediately after treatment.

11. WHAT IF THERE ARE PROBLEMS?

Problem	Cause	Solution
Device will not switch on	On/Off switch faulty	Contact Customer Services or your retailer
No power	The mains part is not connected correctly.	Connect the mains part correctly.

Problem	Cause	Solution
No power	The mains part is faulty.	Contact Customer Services or your retailer
The device's suction is incorrect	Filter blocked/pump faulty	Replace the old filter with a new filter. / Contact Customer Services or your retailer
Exfoliation effect from attachments is no longer ensured	Sapphire coating has worn down	Contact Customer Services or your retailer to request new attachments.

12. DISPOSAL

For environmental reasons, do not dispose of the device in the household waste at the end of its useful life. Dispose of the unit at a suitable local collection or recycling point.

Dispose of the device in accordance with EC Directive – WEEE (Waste Electrical and Electronic Equipment). If you have any questions, please contact the local authorities responsible for waste disposal.



13. TECHNICAL SPECIFICATIONS

Mains part voltage supply	Input voltage: 100 - 240 V Input AC frequency: 50/60 Hz Output voltage: 12.0 V Output current: 0.6 A Output power: 7.2 W Average efficiency during operation: $\geq 80.53\%$ No-load power consumption: ≤ 0.066 W
Dimensions	Ø 21,5 x 8,8 cm
Weight	~869 g

14. WARRANTY / SERVICE

Further information on the guarantee and guarantee conditions can be found in the guarantee leaflet supplied.



Beurer UK Ltd., Suite 16, Stonecross Place, Yew Tree Way
WA3 2SH Golborne, United Kingdom



Beurer GmbH • Söflinger Str. 218 • 89077 Ulm, Germany
www.beurer.com • www.beurer.healthguide.com
www.beurer-gesundheitsratgeber.com



606.67_FC100_2023-02-07_03_IM2_BEU_EN