

beurer

UB 90 / UB 100



UB 90



UB 100



EN Heated underblanket UB 90
Heated underblanket - Fitted UB 100
Instruction for Use





Read these instructions for use carefully. Observe the warnings and safety notes. Keep these instructions for use for future reference. Make the instructions for use accessible to other users. If the device is passed on, provide the instructions for use to the next user as well.








Table of contents

1. Items included in the package	3	4.6 Selecting the automatic switch-off time...	8
1.1 Description	3	4.7 Switching off.....	8
2. Important instructions		4.8 ECO control	8
Retain for future use	4	4.9 kWh display	8
3. Intended use.....	6	4.10 Anti-allergy temperature setting	8
4. Operation.....	6	5. Cleaning and maintenance.....	9
4.1 Safety	6	6. Storage	9
4.2 Putting into operation	6	7. Disposal.....	10
4.3 Switching on.....	7	8. What if there are problems?	10
4.4 Setting the temperature.....	7	9. Technical data	10
4.5 Automatic switch-back.....	7	10. Guarantee / service	10

Explanation of symbols

The following symbols are used on the device, in these instructions for use, on the packaging and on the type plate for the device:

	WARNING: Warning of risks of injury or health hazards		
	CAUTION: Safety information about possible damage to appliance/accessories		
	NOTE: Important information		
	Read the instructions		Do not insert pins
	Do not use folded or rucked		Not to be used by very young children (0 - 3 years)
	Manufacturer		
	The device has double protective insulation and therefore complies with protection class 2.		
	Please dispose of the device in accordance with EC Directive – WEEE (Waste Electrical and Electronic Equipment).		
	Marking to identify the packaging material. A = Material code, B = Material number: 1-7 = Plastics, 20-22 = Paper and cardboard		
	Separate the product and packaging elements and dispose of them in accordance with local regulations.		
	This product satisfies the requirements of the applicable European and national directives.		

UK CA	United Kingdom Conformity Assessed Mark		
EAC	The products demonstrably meet the requirements of the technical Regulations of the EAEU.		
 <p>STANDARD 100 Special Articles 06.0.43510 Hohenstein (HTT) www.oeko-tex.com</p>	The textiles used for this device meet the stringent human ecological requirements of Oeko Tex Standard 100, as verified by Hohenstein Research Institute.		
	Manufacturer code for production data		
	Wash at a maximum temperature of 30 °C, Very gentle wash		Do not iron
			Do not bleach
	Do not dry-clean		Do not dry in a tumble dryer

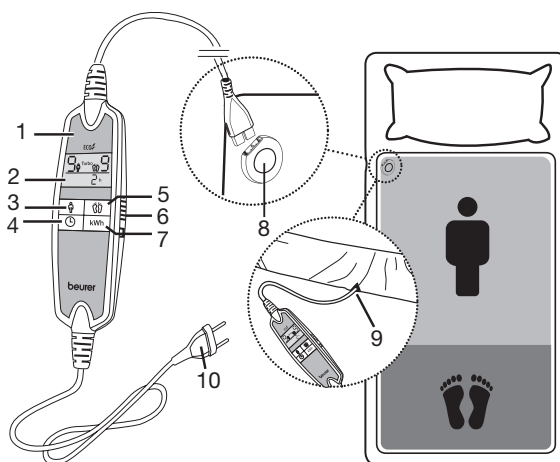
1. Items included in the package

Check that the exterior of the cardboard delivery packaging is intact and make sure that all contents are present. Before use, ensure that there is no visible damage to the device or accessories and that all packaging material has been removed. If you have any doubts, do not use the device and contact your retailer or the specified Customer Service address.

- 1 Heated underblanket
- 1 Control
- 1 Operating instructions

1.1 Description

1. Control
2. Display
3. Button for adjusting the body area temperature
4. Button for setting the automatic switch-off time
5. Button for adjusting the foot area temperature
6. ON/OFF switch
7. Button for displaying the kWh
8. Plug-in coupling
9. Side section slot (UB 100)
10. Supply plug



2. Important instructions

Retain for future use



WARNING

- Non-observance of the following notes may result in personal injury or material damage (electric shock, skin burns, fire). The following safety and hazard information is not only intended to protect your health and the health of others, it should also protect the product. For this reason, pay attention to these safety notes and include these instructions when handing over the product to others.
- This heated underblanket must not be used by persons who are not sensitive to heat or by other vulnerable persons who may not be able to react to overheating (e.g. diabetics, people with skin alterations due to illness or scarred tissue in the application area, after taking pain relief medication or alcohol).
- This heated underblanket must not be used by very young children (0-3 years old) as they are unable to respond to overheating.
- This heated underblanket can be used by children older than 3 and younger than 8 years of age provided they are supervised. For this, the control must always be set to the minimum temperature.
- This heated underblanket may be used by children over the age of 8 and by people with reduced physical, sensory or mental skills or a lack of experience or knowledge, provided that they are supervised or have been instructed on how to use the heated underblanket safely, and are fully aware of the consequent risks of use.
- Children must not play with the heated underblanket.
- Cleaning and user maintenance must not be performed by children unless supervised.
- This heated underblanket is not designed for use in hospitals.
- This heated underblanket is only intended for domestic/private use, not for commercial use.
- Do not insert pins.
- Do not use folded or rucked.
- Do not use if wet.
- Before using it on an adjustable bed, check that the heated underblanket and the cables are not, for example, trapped in a hinge or bunched up.
- This heated underblanket may only be used in conjunction with the control specified on the label.
- This heated underblanket must only be connected to the mains voltage that is specified on the label.

- If the heated underblanket is being used over several hours, we recommend that you set the lowest temperature setting on the control to avoid the body overheating and thereby any potential burns to the skin or heat stroke.
- The electrical and magnetic fields emitted by this heated underblanket may interfere with the function of a pacemaker. However, they are still well below the limits: electrical field strength: max. 5000 V/m, magnetic field strength: max. 80 A/m, magnetic flux density: max. 0.1 millitesla. Please therefore consult your doctor and the manufacturer of your pacemaker before using this heated underblanket.
- Do not pull, twist or make sharp bends in the cables.
- If the cable and control of the heated underblanket are not positioned properly, there may be a risk of becoming entangled in, being strangled by, tripping over, or stepping on the cable and control. The user must ensure that excess lengths of cable, and cables in general, are safely routed.
- Please check this heated underblanket frequently for signs of wear and tear or damage. If any such signs are evident, if the heated underblanket has been used incorrectly or if it no longer heats up, it must be checked by the manufacturer before being switched on again.
- Under no circumstances should you open or repair the heated underblanket (including the accessories) yourself because faultless functionality can no longer be guaranteed thereafter. Failure to observe this will invalidate the warranty.
- If the mains connection cable of this heated underblanket is damaged, it must be disposed of. If it cannot be removed, the heated underblanket must be disposed of.
- Do not expose control and cables to direct sunlight.
- When this heated underblanket is switched on:
 - Do not place any sharp objects on it
 - Do not place any heat sources, such as hot water bottles, heat pads or similar, on it
- The electronic components in the control warm up when the heated underblanket is in use. For this reason, the control must never be covered or placed on the heated underblanket when it is in use.
- Allow the heated underblanket to cool down before storing it away. Otherwise the heated underblanket may get damaged.
- To avoid severe creasing in the heated underblanket, do not place any objects on top of it while it is being stored. Otherwise material damage may occur.

- It is essential to observe the information relating to the following chapters: Operation, Cleaning and maintenance, Storage.
- If you should have any questions about using our devices, please contact our Customer Services department.

3. Intended use



CAUTION

This heated underblanket is designed for warming beds, only.

4. Operation

4.1 Safety



CAUTION

- This heated underblanket is equipped with a SAFETY SYSTEM. This sensor technology prevents the entire surface of the heated underblanket from overheating by automatically switching off the heated underblanket in the event of a fault. If the SAFETY SYSTEM has switched off the heated underblanket, the temperature setting is not illuminated any more even when the heated underblanket is switched on.
- Please note that the heated underblanket is not operable any more due to safety reasons in this case and has to be sent to the service address indicated.
- Do not connect the defective heated underblanket with another control of the same type. This would trigger a permanent switch-off via the control safety system.

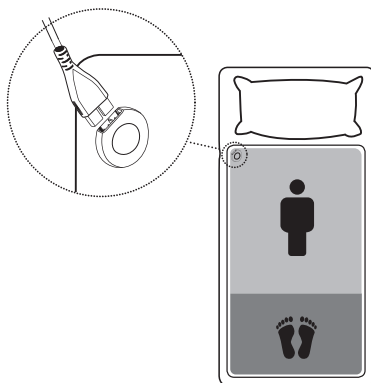
4.2 Putting into operation

- Spread out the heated underblanket flat onto your mattress starting at the foot end.
- To operate the heated underblanket connect the Control to the heated underblanket by plugging in the connector.
- Then plug in the supply plug into the mains outlet.
- Then put on your bedsheet in the usual manner so that the heated underblanket is between your mattress and the bedsheet



CAUTION

Make sure that the heated underblanket is spread out entirely flat and that it will not rumple up or crease when in use.

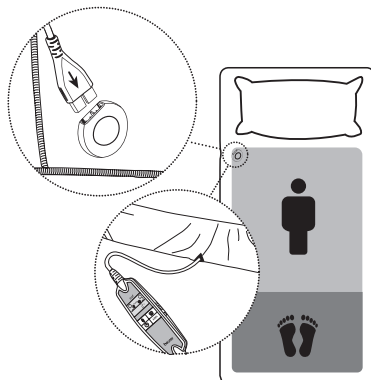


Additional information UB 100

The area intended for the head cannot be heated.

Guide the plug-in coupling plug through the slot on the side section [9] and then connect the Control to the electric underblanket by plugging together the plug-in coupling [8] (see figure).

Then pull the side section over the sides of your mattress like a fitted sheet. The electric underblanket is designed to fit 90 x 200 cm as well as 100 x 200 cm mattresses. If the cable length is insufficient, you can order a longer power supply cord with the material number 108.070 from our specified Customer Service. Then fit your fitted sheet as usual with the electric underblanket positioned between your mattress and the fitted sheet.



4.3 Switching on

Slide the ON/OFF switch [6] sideways [1] to the ON (I) position to switch on the electric underblanket. When switched on, the display [2] lights up and at first displays all the segments for approx. 2 seconds. After that, the following basic settings are displayed:

Temperature setting for body area: 0

Temperature setting for foot area: 0

Automatic switch-off time: 1 h (= 1 hour)

NOTE:

The illuminance level drops after approx. 5 seconds so that your sleep is not disturbed during the night.

NOTE:

This device comes with a fast heating feature. During this time, “Turbo” flashes on the display.

4.4 Setting the temperature

Press the button [3] to select the temperature setting for the body area.

Press the button [5] to select the temperature setting for the foot area.

- Level 0: off
- Level 1: minimum heat
- Level 2–8: individual heat
- Level 9: maximum heat

NOTE:

- Switching sequence of the temperature settings: 0–9–8–7–6–5–4–3–2–1–0–9 ...
- The quickest way to heat up the heated underblanket is to select the highest temperature setting of the Control, first.
- We strongly recommend switching on the heated underblanket approx. 15 minutes before going to bed and covering it with the quilt to prevent the warmth from escaping.



WARNING

If the heated underblanket is being used over several hours, we recommend that you set the lowest temperature setting on the control to avoid the body overheating and thereby any potential burns to the skin or heat stroke.

4.5 Automatic switch-back

NOTE:

This electric underblanket features an automatic switch-back for safety purposes. Temperature settings 9, 8 and 7 are automatically switched to temperature setting 6 after 3 hours.

4.6 Selecting the automatic switch-off time

- Press the button to set the automatic switch-off time [4]. You can set the automatic switch-off time as 1, 2, 3, 4, etc. or 12 hours.

NOTE:

Switching sequence of the automatic switch-off time:

1 h–12 h–11 h–10 h–9 h etc. 1 h–12 h–11 h etc. (time in hours).

If the time remaining is under an hour it is shown in minutes (e.g. 59 min.)

- The electric underblanket is automatically switched off once the set switch-off time has elapsed. The following is then shown in the display:
Temperature setting for body area: 0
Temperature setting for foot area: 0
Automatic switch-off time: "1 h"
- To switch on the electric underblanket again, press either the button to set the temperature setting of the body area (3) or of the foot area (5).
- If you do not want to use the electric underblanket beyond the selected switch-off time, slide the ON/OFF switch to the OFF (0) position to switch off the electric underblanket.

4.7 Switching off

Set the ON/OFF slider (4) to the OFF (0) position to switch off the electric underblanket. After switching off the temperature setting is not illuminated any more.

NOTE:

If the heated underblanket won't be used for several days, switch it off (Slider to setting "0"/OFF) and remove the supply plug from the mains outlet.

4.8 ECO control

Temperature settings 1, 2, 3 and 4 are particularly energy-efficient. If these temperature settings have been selected, the "ECO" symbol is shown in the display.



4.9 kWh display

Press the "kWh" [7] button to display the current power consumption in kWh. The power consumed since the last switch-on is displayed.

Due to the low power consumption in the "ECO" temperature settings, the displayed value (power consumption in kWh) takes a while to change. If both zones are set to temperature setting '9', it will take approx. 8 minutes for the display to change from 0.00 kWh to 0.01 kWh.

NOTE:

A healthy sleeping environment can be achieved by keeping the bedroom cool and pre-heating your bed shortly before going to bed. Lower heating costs for the bedroom also create further cost savings.

4.10 Anti-allergy temperature setting

Useful information

In recent years, the number of people allergic to domestic dust has risen sharply. Typical symptoms of this allergy are irritated eyes, sneezing fits, coughing fits and shortness of breath in the early morning. These reactions are triggered by proteins in the excrement of the house dust mite. Mites are almost always present in warm and humid microclimates, as are often found in beds. They feed mainly on human skin scales and mildew and can be found in every house. Even with regular and thorough cleaning, dust and skin cells continuously build up.

- With the anti-allergy temperature setting, you can fight back against the mite population and create a dry, mildew-free bed environment.
- For this, set the body and foot area temperatures to level 9 and the automatic switch-off time to 12 hours. “Anti-Allergy” is shown in the display.
- In order to prevent heat being lost, the electric underblanket must be completely covered by the duvet for this process.
- This process dries out your mattress and thereby creates a hostile microclimate for the mites. We recommend regular use of the anti-allergy temperature setting. Ideally, the electric underblanket should be operated for the full 12 hours.

5. Cleaning and maintenance



WARNING

Before cleaning the electric underblanket always disconnect the mains plug from the socket and unplug the plug-in coupling [8] and thereby the Control [1] from the electric underblanket. Otherwise there is a risk of an electric shock.



CAUTION

The Control must never come into contact with water or other liquids, as this may cause damage.

- To clean the Control, use a dry, lint-free cloth. Do not use any chemical or abrasive cleaning agents.
- To remove stains from the heated underblanket use a damp cloth and, if necessary, a mild cleaning agent. Do not use cleaning agents containing solvent or scouring agents.



CAUTION

Note that the heated underblanket must not be dry-cleaned, wrung out, machine dried or ironed. Otherwise the heated underblanket may be damaged.

- The heated underblanket is machine washable.
- Set the washing machine to a particularly gentle, 30 °C cycle (woolens programme). Use a mild detergent with dosage according to the manufacturer's instructions.
- While the heated underblanket is still damp after washing, shape it to its original form and size and place it flat over a clothes drying rack to dry.



CAUTION

- Do not attach the heated underblanket to washing lines with washing pegs or the like. Otherwise the heated underblanket may be damaged.
- Only reconnect the Control to the heated underblanket after the connector and the heated underblanket are completely dry. Otherwise the heated underblanket may be damaged.



WARNING

Under no circumstances switch on the heated underblanket to dry it. Otherwise there is a risk of an electric shock.

6. Storage

When not in use we recommend to store the heated underblanket in its original packaging. For this purpose, disconnect the Control from the electric underblanket by unplugging the plug-in coupling.

7. Disposal

For environmental reasons, do not dispose of the device in the household waste at the end of its useful life. Dispose of the unit at a suitable local collection or recycling point. Dispose of the device in accordance with EC Directive – WEEE (Waste Electrical and Electronic Equipment). If you have any questions, please contact the local authorities responsible for waste disposal.



8. What if there are problems?

Problem	Cause	Solution
Display does not light up/no display.	The mains plug is not connected to the socket and/or not switched on.	Connect the mains plug and switch on the electric underblanket.
	The safety system switches off the electric underblanket.	Send the electric underblanket to customer service.
“E1” appears on the display.	The Control is not properly connected to the electric underblanket.	1. Switch off 2. Connect the plug-in coupling correctly 3. Switch on
“E1” appears on the display repeatedly.	Defect on the device.	Please contact Customer Services.

9. Technical data

For technical data, see the type plate label on the electric underblanket.

10. Guarantee / service

Further information on the guarantee and guarantee conditions can be found in the guarantee leaflet supplied.



UK-Importer: Beurer UK Ltd.

Suite 16, Stonecross Place • Stonecross Lane North • WA3 2SH Lowton • United Kingdom



Beurer GmbH • Söflinger Straße 218 • 89077 Ulm, Germany
www.beurer.com • www.beurer-healthguide.com



UB90-100_2025-07-11_03_IM2_BEU_EN