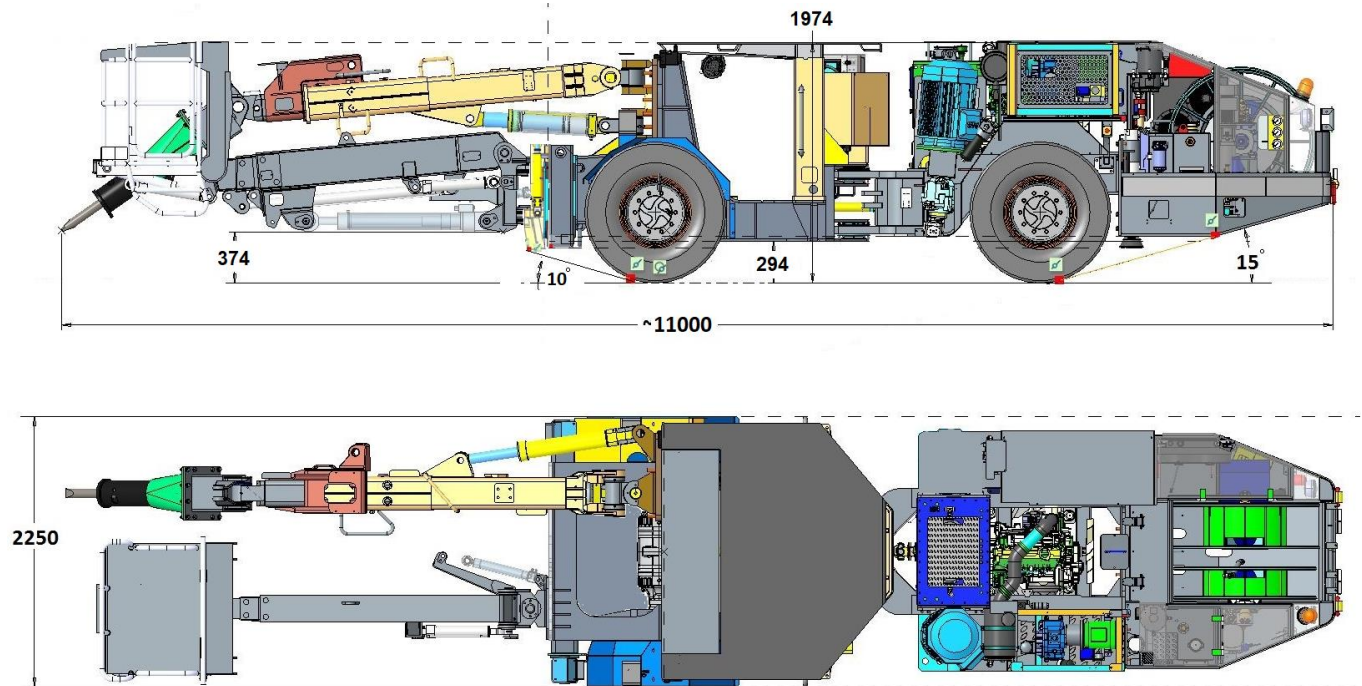


**Roof Scaler 2.0SB**

*Roof scaling machine equipped with service basket with payload 500kg and hydraulic breaker SC-22*



**MAIN COMPONENTS**

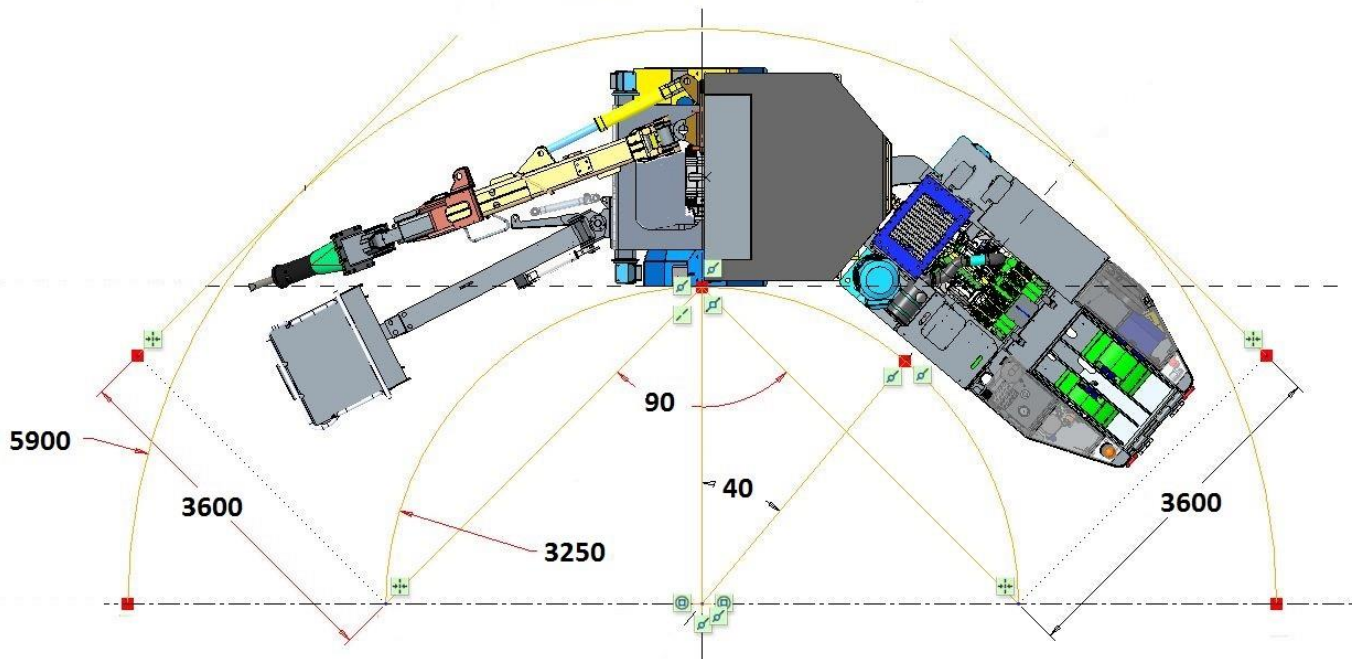
Hydraulic breaker	Montabert SC 22
Booms	B 40HD + SB-500
Diesel engine	Deutz TCD2012L04 - 95 kW @ 2300 RPM, liquid cooled
Service boom	SB-500
Tires	Michelin XZM 11.00 x 20"

**MAIN PARAMETERS**

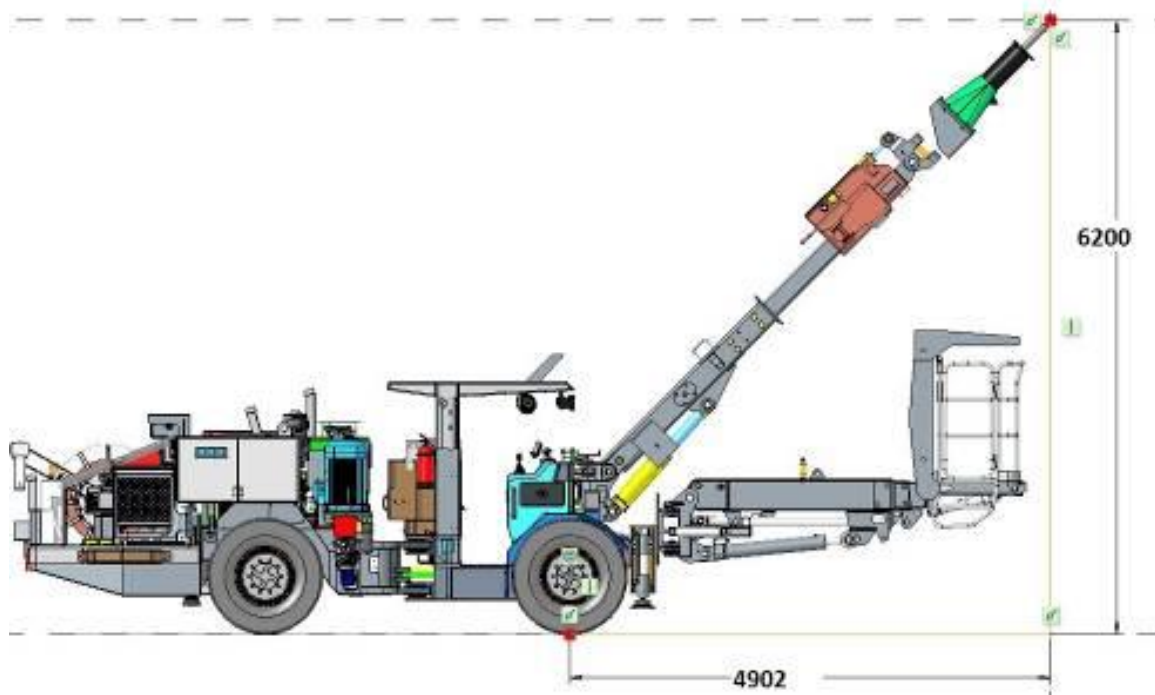
<b>WEIGHT</b>	21 900 kg
<b>DIMENSIONS</b>	
Length	11 000 mm
Width	2 250 mm
Min. tramming height	1 974 mm
Max. height of canopy + canopy segment (for better visibility for 6,2m scaling height)	2 700 mm
Turning radius	R <sub>i</sub> = 3 250 mm R <sub>o</sub> = 5 900 mm
Minimum width of heading for 90 deg turn	
Admissible along gradeability	15 degrees
Admissible cross-grade	5 degrees

**Roof Scaler 2.0SB**

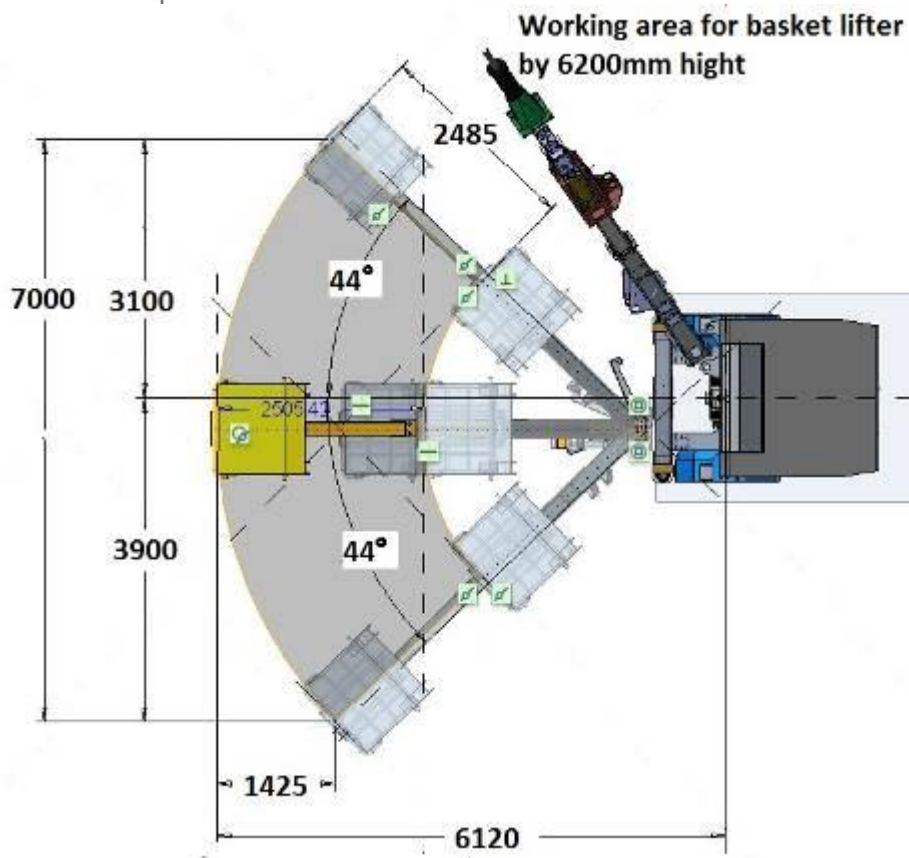
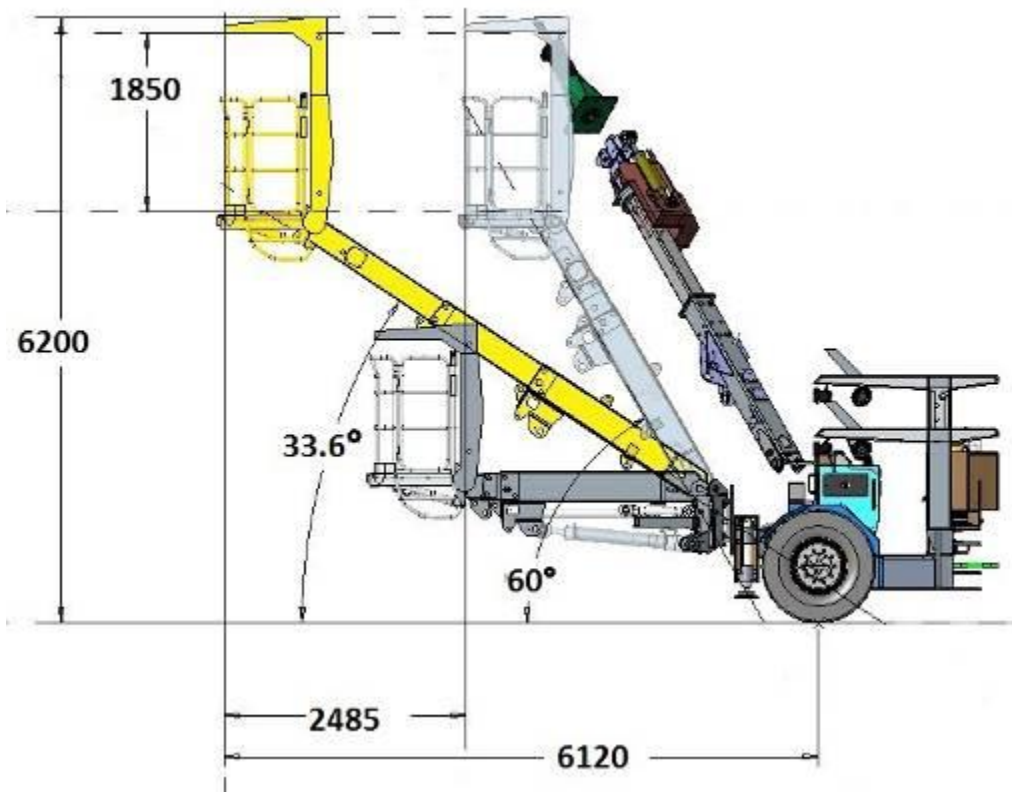
**Turning radius**



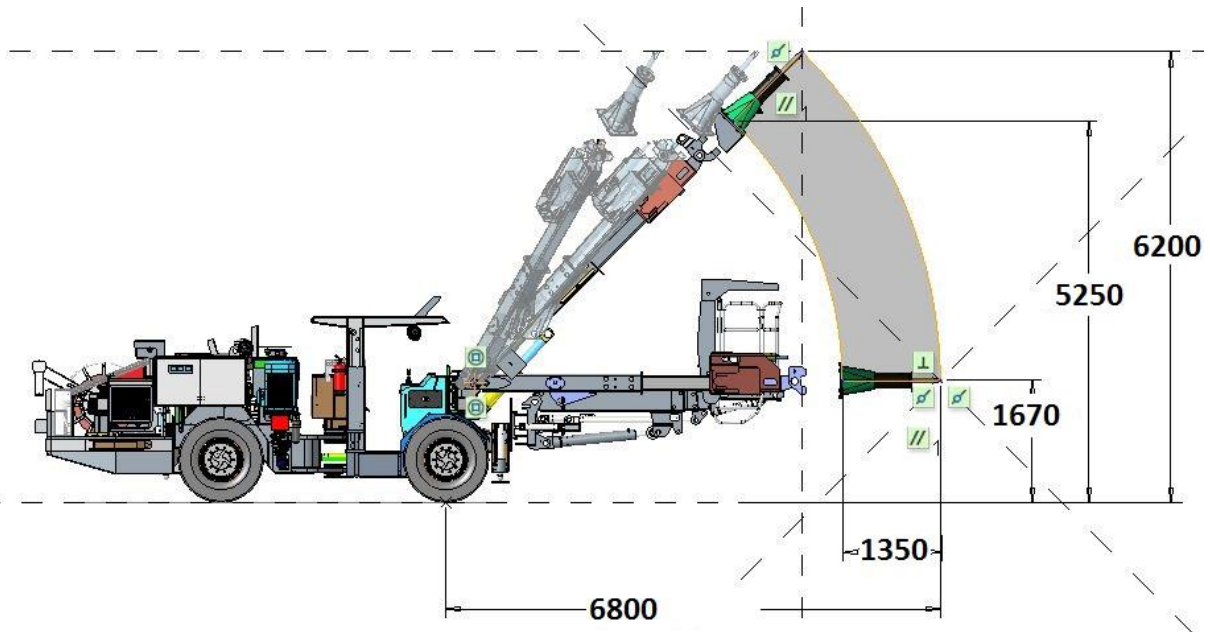
**Coverage – 6,2m reach**



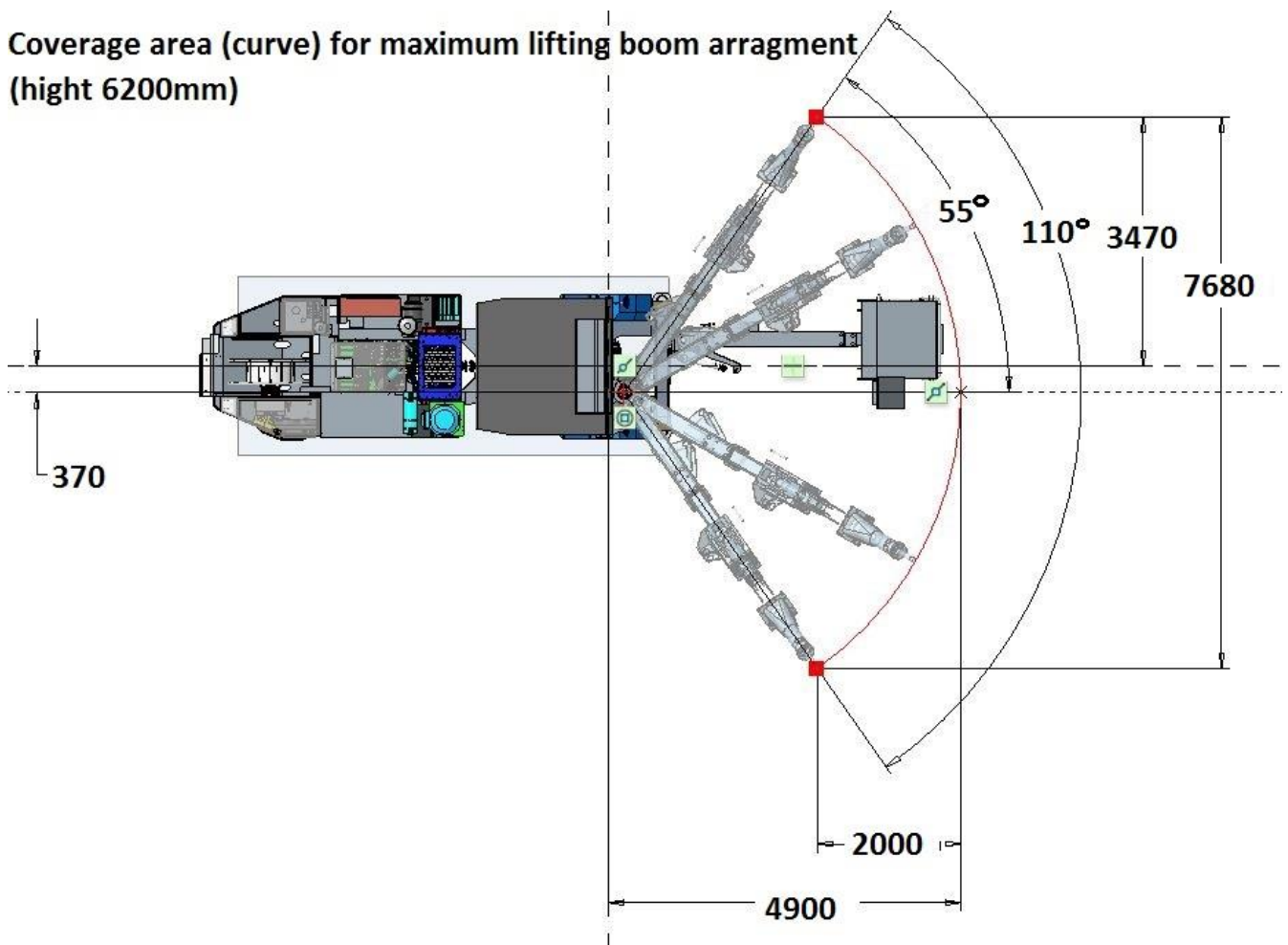
**Roof Scaler 2.0SB**



Roof Scaler 2.0SB



Coverage area (curve) for maximum lifting boom arrangement (height 6200mm)



Roof Scaler 2.0SB

SCALING BOOM

B40HD

Boom extension	1 350 mm
Boom Lift	+40 / -30°
Boom Swing	+/- 40°
Breaker tilt	0-45°
Weight	2 100 kg

HYDRAULIC BREAKER

Montabert

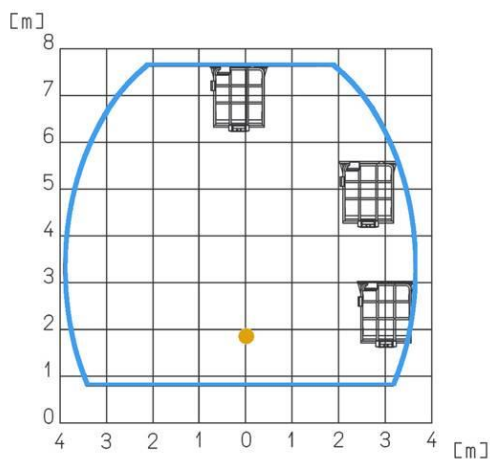
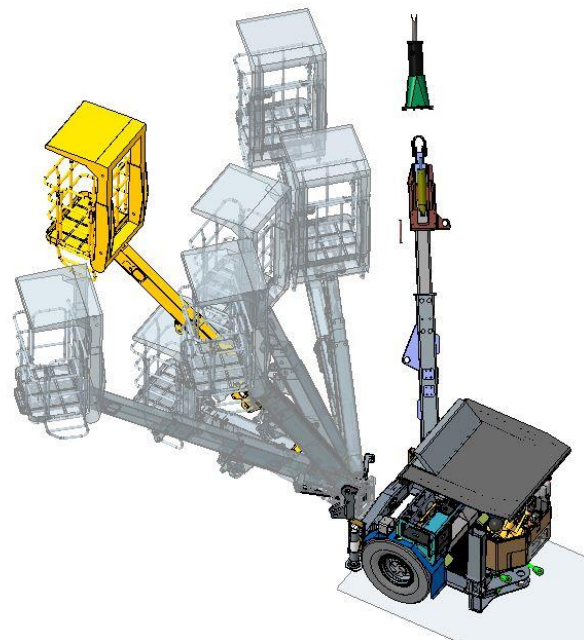
Type

SC-22

Breaker operating weight	225 kg
Oil flow range (min - max)	30-65 l/min
Frequency	1310 blows/min
Operating pressure (max)	120 bar
Tool diameter	65 mm

SERVICE BASKET

Type	SB-500
Boom extension	2 600 mm
Boom Lift	+50 / -30°
Boom Slew	+45 / -45°
Capacity of basket	500 kg
Weight	1 500 kg



**Roof Scaler 2.0SB**

**CARRIER**

<b>Diesel engine</b>	Deutz TCD2012L04 - 95 kW @ 2300 rpm, liquid cooled
<b>Tramming</b>	Four wheel drive (Power shift)
<b>Transmission</b>	1203FT20300-170 Dana Off-Highway
<b>Torque converter</b>	Transmission integrated
<b>Axles</b>	113 Dana Off-Highway front (LS 45%) and rear (open)
<b>Articulation</b>	Danfoss – Orbitrol controlled by steering wheel
<b>Brakes</b>	Fail-safe, wet multi-disc service brakes with additional fail-safe emergency-parking brake
<b>Tires</b>	12.00 x 20
<b>Fuel tank</b>	100 l
<b>Electrical control system</b>	24 V
<b>Battery</b>	2 x 12 V
<b>Driving lights</b>	4 x 35W LED
<b>Automatic centralized lubrication system</b>	SKF
<b>Hand pump to release emergency/parking brakes</b>	

**HYDRAULIC SYSTEM**

<b>Hydraulic pump</b>	Axial-piston with load sensing
<b>Percussion</b>	130 bar
<b>Tank of oil with oil level indicator, return filter</b>	260 l
<b>Filtration</b>	10 µm
<b>Oil cooler</b>	Radiator with electric fan
<b>Hydraulic oil</b>	HV 68
<b>24V oil pump</b>	To fill main hydraulic oil tank

**ELECTRICAL SYSTEM**

<b>Motor</b>	1x 55 kW
<b>Voltage</b>	To suit customer's requirements
<b>Starting method</b>	star/delta
<b>Lights</b>	6 nos front for working - 35W LED 2 nos front + 4 nos rear for tramming - 35W LED 1 nos on the basket - 35W LED
<b>Cable reel capacity</b>	80 m
<b>Electric cable last turn lock</b>	stops machine while electric cable is fully pulled out
<b>Compatible power network</b>	TN-S

### ADDITIONAL EQUIPMENT INSTALLED ON THE MACHINE AS STANDARD

---

#### HYDRAULICALLY-MOVABLE FRONT PLATE.

Shape of same shall enable pushing rocks on both side of the rig



---

#### RADIO REMOTE CONTROL

Control system of scaling boom to control boom movements, breaker tilt and percussion.



#### OPERATION FROM DIESEL ENGINE

Possibility of scaling boom and service basket operating (not at the same time) from diesel engine. All functions (the same as from electric system) are provided. Diesel rpm is kept at proper level automatically.

---

### SAFETY FEATURES

---

#### ROOF INSPECTION BASKET WITH FOPS PROTECTION CANOPY

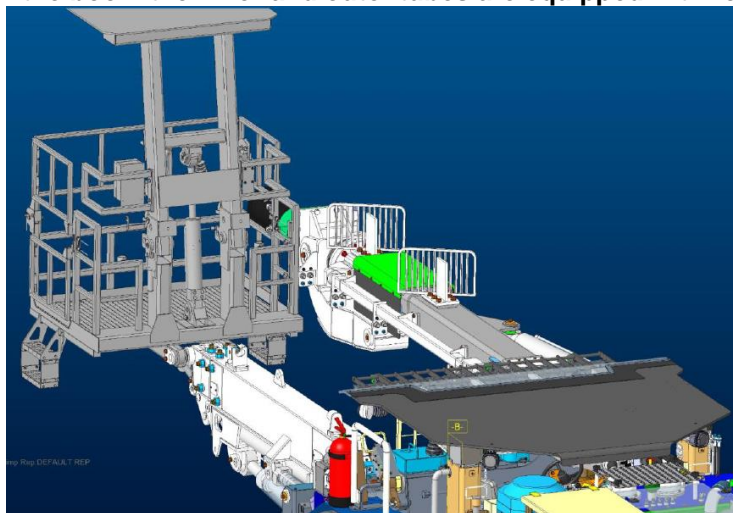
The roof inspection basket is equipped with protection canopy conforming FOPS regulations. The canopy is collapsible for tramming purpose with us of hydraulic cylinder and secured by steel pins to carry the load of falling objects.

To maximize safety, operation of the basket is possible only when all doors are locked. Breaker is disabled when basket is in operation.



**ROCK DEFLECTORS**

To avoid rock falls down the boom the inner and outer tubes are equipped with rock deflectors.

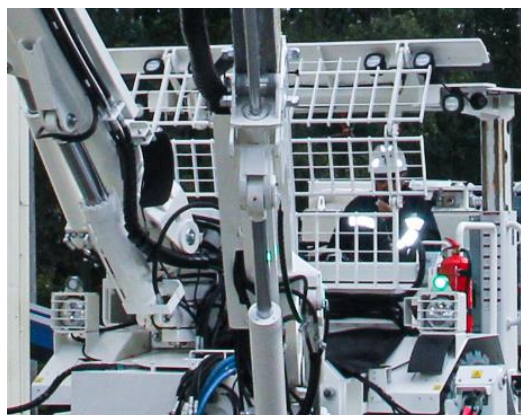


**FRONT PROTECTION GUARD**

To improve protection of the operator, located in the working compartment under the canopy, the canopy is provided with steel bar front rock guard.

**FOPS CANOPY with LIFTING SEGMENT**

To improve visibility during scaling on a height 6,2m, the canopy is equipped with lifting segment. All structure is FOPS certified.





## Roof Scaler 2.0SB

### LASER BARRIER

On both sides of the machine there is a laser barrier located in front of the wheels. In event someone enters into danger zone during operation, all movements will stop automatically.



### MULTIPLIED CONTROLS

Due to safety reasons, it is not possible to control the service basket at the same time from 2 different locations, it means, when control rights is given to the panel in the basket, there is no possibility to control the boom from carrier.

### INFORMATION PANNEL

Before tramming, operator must go through certain point to enable him drive - fasten seat belt, put up all four jacks, move both boom to "tramming position" (meaning along machine), select gear, disengage parking brake. On display operators will see if all required points have been fulfilled. However if during tramming one jack will lower down and sensor will see that, machine will continue to tramming until operator put gear into neutral. During tramming with jack lowered, a warning will be shown on the display and warning sound will be generated. This is due to safety concern, if there is hazard and operator needs to escape, machine cannot stop.



### REVERSE CAMERA

To improve visibility while reverse the machine, the rear part of the machine from the back is equipped with reverse camera, and the view is displayed at the tramming compartment on diesel engine display.



---

**Roof Scaler 2.0SB**

**PUSHER PLATE CAMERA**

To improve visibility at the pusher plate when tramming forward. Camera facing plate from the basket boom.

**SEATBELT SENSOR**



**LED NAVIGATION LIGHTS ( RED ON THE RH SIDE - GREEN ON THE LH SIDE)**

