

KOMATSU

PC1250SP-11R



Hydraulic excavator

Engine power
578 kW / 775 HP @ 1800 rpm

Operating weight
118600 kg

Bucket capacity
6.7 m³ (@ 1.8 t/m³)

PC1250SP-11R



Engine power

578 kW / 775 HP @ 1800 rpm

Operating weight

118600 kg

Bucket capacity

6.7 m³ (@ 1.8 t/m³)



Excellent economy and high productivity

Powerful and environmentally friendly

- Fuel efficient high performance Komatsu SAA6D170E-7 engine
- Adjustable idle shutdown
- Auto-decelerator
- Komatsu fuel-saving technology
- 6% fuel consumption reduction

Maximised efficiency

- Increased productivity (up to 8%)
- Large digging force
- Large drawbar pull and steering force
- Two-mode boom control
- Swing priority mode

First-class comfort

- Fully air-suspended operator station
- Low-noise design
- Widescreen monitor

Safety first

- Komatsu SpaceCab™
- KomVision surround view system
- Neutral position detection system
- Hydraulically operated stairway
- Emergency engine stop switches
- LED lights as standard

Quality you can rely on

- Komatsu-quality components
- Extensive dealer support network

Komtrax Plus

- Immediate diagnostics of machine
- Operational data reports

Photos may include optional equipment



Higher productivity

Work modes include the well-known Power and Economy modes, and the PC1250SP-11R also benefits from the new "Power plus" (P+) mode, which allows the operator to make full use of the increased engine power to achieve up to 8% higher production than with a PC1250-8R in P mode.

Komatsu fuel-saving technology

Fuel consumption on the PC1250SP-11R is lower by up to 6%. Engine management is enhanced. The variable speed matching of the engine and hydraulic pumps guarantee efficiency and precision during single and combined movements.

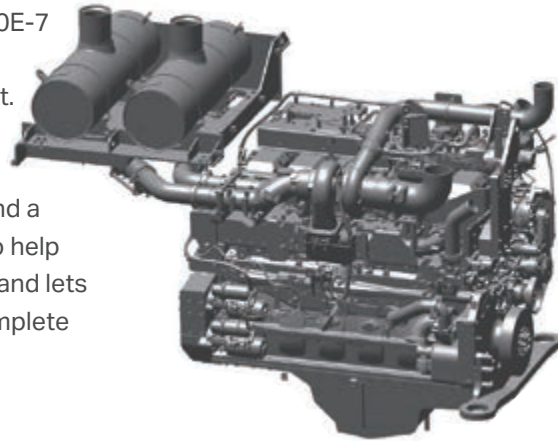
Adjustable idle shutdown

The Komatsu auto idle shutdown automatically turns off the engine after it idles for a set period of time. This feature can easily be programmed from 5 to 60 minutes, to reduce unnecessary fuel consumption and exhaust emissions, and to lower operating costs. In addition, the new auto-deceleration function automatically lowers engine speed, when levers are in neutral for a set time.

Powerful and environmentally friendly

Komatsu engine

The Komatsu SAA6D170E-7 engine is productive, dependable and efficient. With low emissions, it provides a lower environmental impact and a superior performance to help reduce operating costs and lets the operator work in complete peace of mind.



Electronically controlled variable speed fan

The fan speed is electronically controlled according to actual operating conditions, ensuring maximum deployment of engine power to working, while minimising noise.



ECO guidance

While the machine is operating, ECO guidance operation tips pop up on the monitor, guiding the operator to achieve better fuel efficiency.

ECO gauge & fuel consumption gauge

The monitor screen includes an ECO gauge and also a fuel consumption gauge which is continuously displayed. In addition, the operator can set any desired target value of fuel consumption (within the range of the green display), enabling the machine to be operated with better fuel economy.



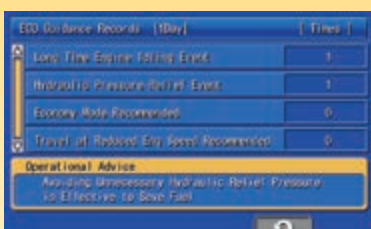
Three work modes for large-working volume & low fuel consumption

In addition to the newly added [P+ mode], the new [P mode] has reduced fuel consumption with the same production volume as the conventional P mode, and the new [E mode] which has same speed at light load as the conventional P mode with further reduced fuel consumption. The three work modes can be selected with one touch using the monitor switch.



Multiple E mode setting for reduced fuel consumption

For work that requires reduced fuel consumption, three stages of E mode can be selected to flexibly adapt to any operating condition.



Eco guidance record



Fuel consumption history



Quick view on the operation logs

Maximised efficiency

Powerful digging force

Thanks to the high engine output and an optimised hydraulic system, the PC1250SP-11R delivers a powerful arm crowd force of up to 412 kN (42 tonnes) at PowerMax and a bucket digging force of up to 570 kN (58.1 tonnes) at PowerMax.

Shockless boom control

The PC1250SP-11R features a shockless valve (double-check slow return valve) that automatically reduces the amount of vibration present when operating the boom. Operator fatigue is reduced (which can improve safety and productivity), and spillage caused by vibration is prevented.

Swing priority mode

A twin swing motor system provides excellent swing performance, with high speed and strong braking power. The swing priority setting allows using the same smooth motion for either 180° or 90° loading operations. By altering the oil flow, the operator selects either boom or swing as the priority for increased production.

Large drawbar pull and steering force

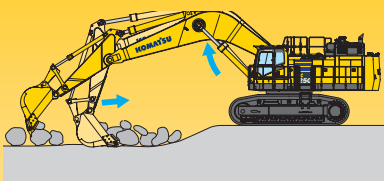
Because the machine has a large drawbar pull and a substantial steering force, it provides excellent mobility, even when working on an incline.

Heavy lift mode

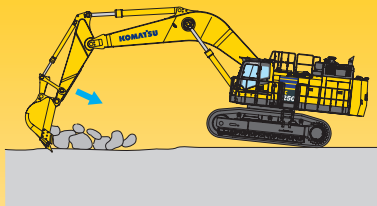
Gives the operator 10% more lifting force on the boom when needed for handling rock or heavy lifting applications.



Two-mode boom control



Smooth mode
Boom floats upward, reducing lifting of machine front. This facilitates gathering blasted rock and scraping down operations.



Power mode
Boom pushing force is increased, providing a higher penetration force.



First-class comfort

Increased comfort

In the wide Komatsu SpaceCab™, a standard air-suspended high-back seat, heated and ventilated for improved comfort and with fully adjustable armrests, is the centre of a comfortable and low-fatigue working environment. High visibility and ergonomic controls further assist to maximise the operator's productivity.

Perfect operator convenience

In addition to the standard AM/FM radio, the PC1250SP-11R has Bluetooth® and an auxiliary input for connecting external devices and playing music through the cab speakers. Two 12-volt power ports are also incorporated in the cab. Proportional controls are fitted as standard for safe and precise operation of attachments.

Low-noise design

Komatsu crawler excavators have very low external noise levels. The optimal usage of sound insulation and of sound absorbing materials helps to make noise levels inside the cab comparable to those of an executive car.



Convenient, ergonomic and precise control: joysticks



Plenty of storage room, a hot and cool box, a magazine box and a cup holder



Armrest with simple height adjustment



Lower operating costs

Komatsu ICT contributes to the reduction of operating costs by assisting to comfortably and efficiently manage operations. It raises the level of customer satisfaction and the competitive edge of our products.

Widescreen monitor

Conveniently customisable and with a choice of 26 languages, the widescreen monitor with simple switches and multifunction keys gives fingertip access to a large range of functions and operating info. The KomVision images and Eco gauge are now incorporated into the default main screen.

An evolutionary interface

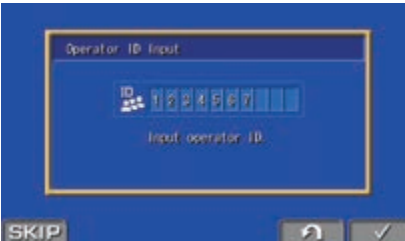
Helpful information is now easier than ever to find and understand with the upgraded monitor interface. An optimal main screen for the ongoing work can be selected simply by pressing the F3 key.



Versatility at your fingertips: select the perfect setting for each job



With KomVision, various camera view options are available whilst maintaining constant "birdview" from above the machine



Operator identification function

Safety first

Optimal jobsite safety

Safety features on the Komatsu PC1250SP-11R comply with the latest industry standards and work in synergy to minimise risks to people in and around the machine. A neutral detection system for travel and work equipment levers increase jobsite safety, along with a seat belt caution indicator and an audible travel alarm. Highly durable anti-slip plates – with additional high friction covering – maintain long term traction performance.



The hydraulically operated stairway provides safer access and egress to and from the machine.



Three emergency engine stop switches are installed in the cab and around the machine.



KomVision cameras



Exceptional operator protection



Hand rails and anti-slip plates

KomVision

With a series of high definition networked cameras fitted on the machine, KomVision provides a crystal clear, real-time bird's eye view of the immediate surroundings on the widescreen cab monitor. The operator can quickly and easily check the machine's vicinity prior to making any movement, and focus on the work at hand even in low light conditions.

Komatsu SpaceCab™

The wide Komatsu SpaceCab™ with user-friendly controls provides a comfortable and safe work environment. A fully adjustable air-suspended seat dampens vibrations and reduces the fatigue of long shifts. Large front and side windows give a superior visibility and higher confidence. This increases the safety for the driver as well as other people and machines on the jobsite.

Safe maintenance

Thermal guards around high temperature areas of the engine, protected fan belt and pulleys, a pump/engine partition that prevents hydraulic oil from spraying onto the engine, a wide catwalk and exceptionally sturdy handrails: in Komatsu tradition, the highest safety level is provided for a fast and smooth maintenance.



Full LED lighting for improved visibility



Full LED lighting for improved visibility



Secondary engine shut down switch and seat belt caution

KOMTRAX Plus

Equipment management support

Komtrax Plus enables expanded monitoring of the fleet via satellite and wireless LAN. Users can analyze "machine health" and performance from a remote location, on a near-real time basis. This includes component condition and trend data. By making this critical information readily accessible, Komtrax Plus is an effective tool in maximizing productivity and lowering operating cost.



What

- Komtrax is Komatsu's remote equipment monitoring and management system
- Komtrax is standard equipment on all Komatsu construction products
- Komtrax continuously monitors and records machine health and operational data
- Information such as fuel consumption, utilization, and a detailed history aids in making repair or replacement decisions

Where

- Komtrax data can be accessed virtually anywhere through your computer, the web or your smart phone
- Automatic alerts keep fleet managers up to date on the latest machine notifications

Why

- Knowledge is power - make informed decisions to manage your fleet better
- Knowing your idle time and fuel consumption will help maximize your machine efficiency
- Take control of your equipment - any time, anywhere

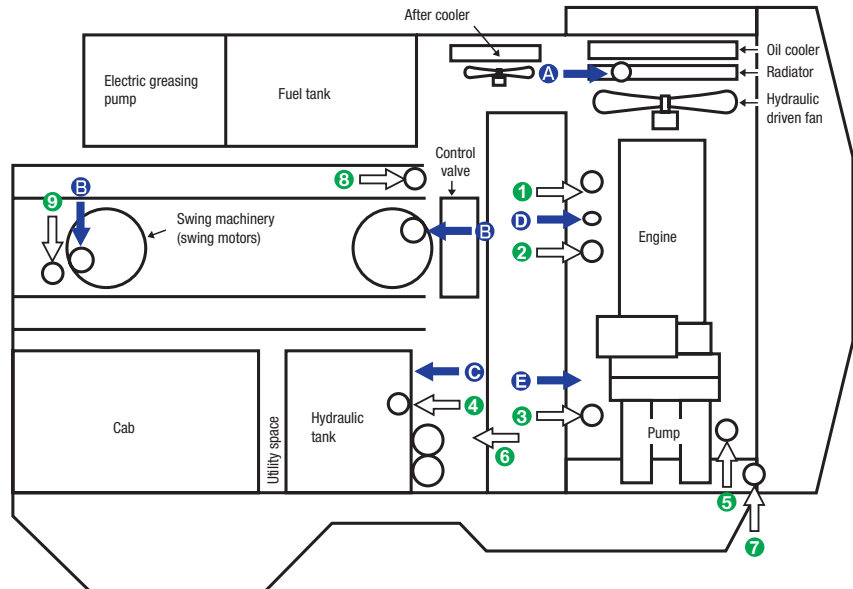
When

- Know when your machines are running or idling and make decisions that will improve your fleet utilization
- Detailed movement records ensure you know when and where your equipment is moved
- Up to date records allow you to know when maintenance was done and help you plan for future maintenance needs

Easy maintenance



A wide, illuminated centre walkway provides easy access to many inspection and maintenance points. In addition, inspection and maintenance points are grouped to facilitate easy engine and hydraulic component checks.



- A Coolant
- B Swing machinery oil
- C Hydraulic oil
- D Engine oil
- E PTO oil
- 1 Fuel filters
- 2 Fuel pre-filters
- 3 Engine oil filters
- 4 Hydraulic drain filter
- 5 Pilot filter
- 6 Hydraulic return filters
- 7 PTO strainer
- 8 Swing motor cooling filters

Long-life oil filters

The Komatsu genuine hydraulic oil filter uses high-performance filtering material for long replacement intervals, which significantly reduces maintenance costs.



Pre-cleaner



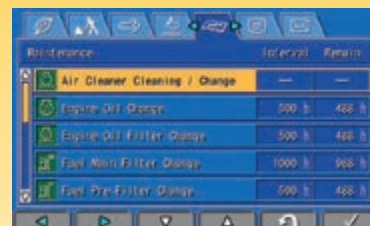
Large capacity fuel pre-filter with water separator

Easy cleaning of radiator

The hydraulically driven fan can be reversed to facilitate cleaning of the cooling unit. In addition, this feature contributes to reducing warm-up time in low temperatures. Hinged A/C condenser and fuel cooler provide easy access to each core.



Coolant filter



Basic maintenance screen

Quality you can rely on



Rugged design

The undercarriage of the PC1250SP-11R is specifically designed to cope with the heavy forces to be found in hard quarry operations. With heavy duty double grouser track shoes and roller guard options, the moving parts of the undercarriage are strongly shielded against damage from rocks, while traction force and ground pressure may be optimized for your particular site.

Komatsu-quality

With the latest computer techniques and a thorough test programme, Komatsu's global know-how produces equipment to meet your highest standards.

Reliable and efficient

Productivity is the key to success – all major components of the PC1250SP-11R are designed and manufactured by Komatsu. All essential functions are perfectly matched for a highly reliable and productive machine.

High strength boom and arm

Thanks to the large cross-sectional structure made with high tensile strength steel and a thick plate and partition wall, the boom and arm provide excellent durability and are highly resistant to bending and twisting. Highly durable rubbing strips on the underside of the arm protect the structure from damage. The reinforced short boom and arm specification allows to increase the bucket capacity.



Sturdy travel motor guards and rock protectors



Full length track roller guards



Clogging detector in hydraulic return filter prevents damage of hydraulic system



Bulkhead wall (fire wall) prevents oil from splashing into the engine room in the event of hydraulic oil leak.

Komatsu total support



Komatsu total support

To keep your machine available and minimize operation cost when you need it, Komatsu distributor is ready to provide a variety of supports before and after procuring the machine.

Fleet recommendation

Komatsu distributor can study the customer's job site and provide the most optimum fleet recommendation with detailed information to meet all of your application needs when you are considering to buy new machines or replace the existing ones from Komatsu.



Product support

Komatsu distributor gives the proactive support and secures the quality of the machine that will be delivered.

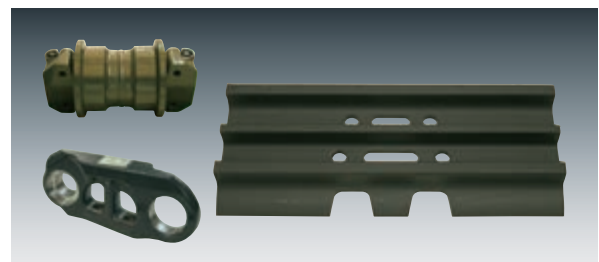
Parts availability

Komatsu distributor is available for emergency inquiry by the customers for genuine, quality guaranteed Komatsu parts.

Technical support

Komatsu product support service (technical support) is designed to help customer. Komatsu distributor offers a variety of effective services to show how much Komatsu is dedicated to the maintenance and support of Komatsu machine.

- Preventive Maintenance (PM) clinic
- Oil & wear analysis program
- Undercarriage inspection service, etc.



Repair & maintenance service

Komatsu Distributor offers quality repair and maintenance service to the customer, utilizing and promoting Komatsu developed programs.

Komatsu Reman (remanufactured) components

Komatsu Reman products are the result of the implementation of the Komatsu global policy which establishes and agrees to reduce the owning, operating and total Life Cycle Costs (LCC) to Komatsu's customer through high quality, prompt delivery and competitively priced in own remanufactured products (QDC).



Specifications

Engine

Model	Komatsu SAA6D170E-7
Type	4-cycle, water-cooled, direct injection
Aspiration	Turbocharged, aftercooled
Engine power	
at rated engine speed	1800 rpm
SAE J1995	578 kW/775 HP
ISO 9249 / SAE J1349*	560 kW/750 HP
No. of cylinders	6
Bore × stroke	170 × 170 mm
Displacement	23.15 l
Fan drive type	Hydraulic
Fuel	Up to 30% blended biodiesel fuel and paraffine fuel can be used. Please consult your Komatsu distributor for detail.
* Net horsepower at the maximum speed of radiator cooling fan is 493 kW/661 HP Level of engine emissions is equivalent to that of EPA Tier 2	

Hydraulic system

Type	Open-center load-sensing system
Main pump	3 variable displacement piston pumps supplying boom, arm, bucket, swing and travel circuits
Maximum pump flow	
Implement and travel	2 × 494 l/min
Swing	1 × 600 l/min
Sub-pump for control circuit	Gear pump
Hydraulic motors	
Travel	2 × axial piston motors with parking brake
Swing	2 × axial piston motors with swing holding brake
Relief valve setting	
Implement	320 kgf/cm ²
Travel circuit	350 kgf/cm ²
Swing circuit	280 kgf/cm ²
Pilot circuit	32 kgf/cm ²
Hydraulic cylinders	(Number of cylinders-bore × stroke)
Boom	2 – 225 mm × 2390 mm
Arm	1 – 250 mm × 2435 mm
Bucket	2 – 160 mm × 1950 mm

Swing system

Drive method	2 × hydraulic motors
Swing reduction	Planetary gear
Swing circle lubrication	Grease-bathed
Swing lock	Oil disc brake
Swing speed	5.8 rpm

Drives and brakes

Steering control	2 levers with pedals, giving full independent control of each track
Drive method	Fully hydrostatic
Travel motor	Axial piston motor, in-shoe design
Reduction system	Planetary triple reduction
Maximum drawbar pull	686 kN/70000 kgf
Gradeability	70%
Max. travel speeds (Lo/Hi)	2.3/3.3 km/h
Service brake	Hydraulic lock
Parking brake	Oil disc brake

Undercarriage

Construction	H-leg frame with box section track frames
Track assembly	
Type	Sealed
Shoes (each side)	48
Tension	Hydraulic
Rollers	
Track rollers (each side)	8
Carrier rollers (each side)	3

Service refill capacities

Fuel tank	1360 l
Radiator	134 l
Engine oil	86 l
Final drive (each side)	21 l
Swing drive	20 × 2 l
Hydraulic tank	670 l
Power Take Off (PTO)	13.5 l

Operating weight (appr.)

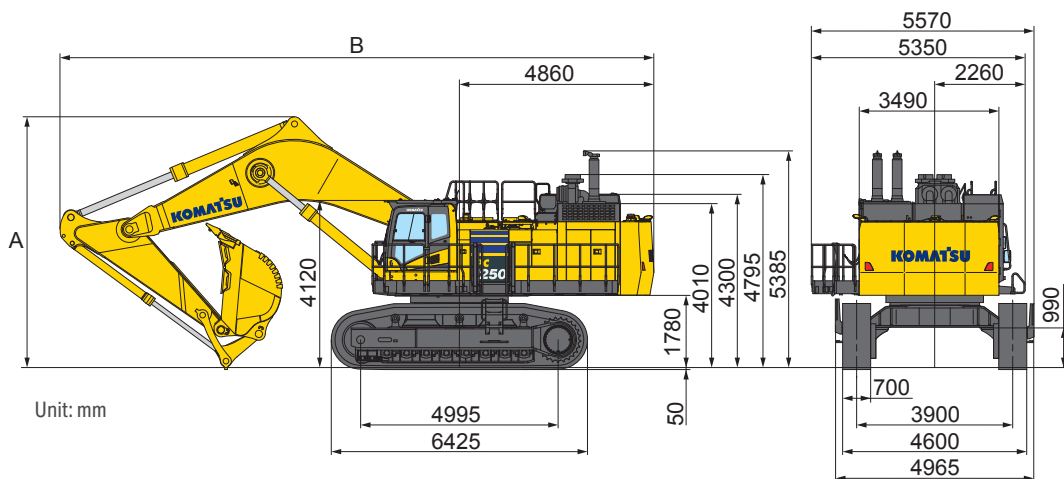
Shoes	Operating weight	Ground pressure
Double grouser 700 mm	118600 kg	1.54 kgf/cm ²

Operating weight, including 7800 mm boom, 3400 mm arm, ISO 7451 heaped 6.7 m³ backhoe bucket, full length roller guard, operator, lubricant, coolant, full fuel tank, and the standard equipment.

Dimensions and performance figures

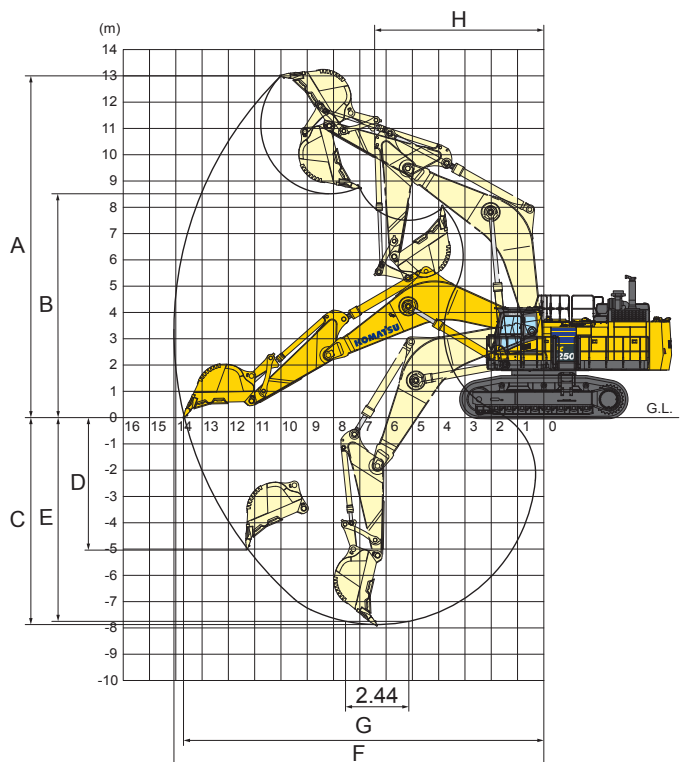
Machine dimensions

Boom length	7800 mm
Arm length	3400 mm
A Overall height	6265 mm
B Overall length	14790 mm

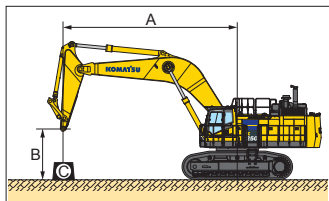


Working range

A Max. digging height	13000 mm
B Max. dumping height	8450 mm
C Max. digging depth	7900 mm
D Max. vertical wall digging depth	5025 mm
E Max. digging depth of cut for 2.44 m level	7745 mm
F Max. digging reach	14070 mm
G Max. digging reach at ground level	13670 mm
H Min. swing radius	6415 mm
Bucket digging force (SAE J1179)	502 kN/51200 kgf
Arm crowd force (SAE J1179)	395 kN/40300 kgf
Bucket digging force (ISO 6015)	570 kN/58100 kgf
Arm crowd force (ISO 6015)	412 kN/42000 kgf



Lifting capacity



Equipment:

- Boom: 7.8 m
- Arm: 3.4 m
- Without bucket
- Track shoe width: 700 mm

A: Reach from swing center

B: Arm top pin height

C: Lifting capacity

Cf: Rating over front

Cs: Rating over side

⊗: Rating at maximum reach

Heavy lift "ON"

B \ A	⊗ MAX		12.2 m		10.7 m		9.1 m		7.6 m		6.1 m		4.6 m	
	Cf	Cs	Cf	Cs	Cf	Cs	Cf	Cs	Cf	Cs	Cf	Cs	Cf	Cs
9.1 m	*19400 kg	*19400 kg					*27000 kg	*27000 kg						
6.1 m	*18450 kg	*18450 kg			26250 kg	21400 kg	*29050 kg	27650 kg	*33150 kg	*33150 kg	*40350 kg	*40350 kg		
3.0 m	*19400 kg	18250 kg			25150 kg	20350 kg	31850 kg	25650 kg	*39650 kg	33550 kg				
0.0 m	*22500 kg	19000 kg			24450 kg	19650 kg	30500 kg	24400 kg	40150 kg	31700 kg	*53450 kg	44450 kg		
-3.0 m	*26650 kg	23700 kg					*28650 kg	24600 kg	*36850 kg	31750 kg	*45950 kg	44800 kg	*57250 kg	*57250 kg
-6.1 m														

Heavy lift "OFF"

B \ A	⊗ MAX		12.2 m		10.7 m		9.1 m		7.6 m		6.1 m		4.6 m	
	Cf	Cs	Cf	Cs	Cf	Cs	Cf	Cs	Cf	Cs	Cf	Cs	Cf	Cs
9.1 m	*17550 kg	*17550 kg					*24100 kg	*24100 kg						
6.1 m	*16550 kg	*16550 kg			*23750 kg	21400 kg	*25850 kg	*25850 kg	*29550 kg	*29550 kg	*36100 kg	*36100 kg		
3.0 m	*17500 kg	*17500 kg			*25150 kg	20350 kg	*29050 kg	25650 kg	*35250 kg	33550 kg				
0.0 m	*20300 kg	19000 kg			24450 kg	19650 kg	*30250 kg	24400 kg	*37150 kg	31700 kg	*47450 kg	44450 kg		
-3.0 m	*23450 kg	*23450 kg					*25250 kg	24600 kg	*32550 kg	31750 kg	*40650 kg	*40650 kg	*50600 kg	*50600 kg
-6.1 m														

* Load is limited by hydraulic capacity rather than tipping. Ratings are based on ISO standard No. 10567. Rated loads do not exceed 87% of hydraulic lift capacity or 75% of tipping load.

Max. bucket capacity and weight

Arm length	3400 mm	
Max. pin load	18570 kg	
Material weight up to 1.2 t/m ³	8.43 m ³	8450 kg
Material weight up to 1.5 t/m ³	7.32 m ³	7590 kg
Material weight up to 1.8 t/m ³	6.70 m ³	6510 kg

Max. capacity and weight have been calculated according to ISO 10567:2007.

Please consult with your distributor for the correct selection of buckets and attachments to suit the application.

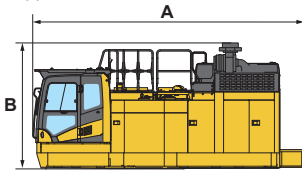
Transportation guide

Transportation volumes

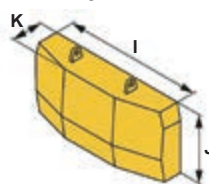
Upper structure	Length (A) × height (B) × width	mm	6780 × 3030 × 3495
	Weight (including lifting jig)	t	29.5
Track frame	Length (C) × height (D) × width (E)	mm	6365 × 1310 × 1585
	Weight	t	31.6 (15.8 t × 2)
Center frame	Length (F) × height (G) × width (H)	mm	2850 × 1170 × 3540
	Weight	t	10.2
Counterweight	Length (I) × height (J) × width (K)	mm	3490 × 1995 × 855
	Weight	t	16.6
Work equipment assembly	Weight	t	27.9
Boom	Length × height × width	mm	8170 × 3095 × 1474
	Weight	t	11.0
Arm	Length × height × width	mm	4914 × 1683 × 890
	Weight	t	6.6
Arm cylinder	Length	mm	3950
	Weight	t	1.5
Boom cylinder	Length	mm	3810
	Weight	t	2.4 (1.2 t × 2)

Bucket cylinder	Length	mm	Included in arm
	Weight	t	Included in arm
Bucket	Length (L) × height (M) × width	mm	2527 × 2420 × 2530
	Weight	t	6.5
Others	Weight	t	1.3
Right duct	Length (N) × height (O)	mm	2015 × 220
	Weight	kg	15
	Length (P) × height (Q)	mm	2015 × 1960
	Weight	kg	140
Catwalk	Length (R) × width (S)	mm	2670 × 1120
	Weight	kg	266
	Length (T) × width (U)	mm	700 × 500
	Weight	kg	40
	Length (V) × width (W)	mm	2725 × 620
	Weight	kg	190
Handrail, covers, exhaust tube, step	Weight	kg	660

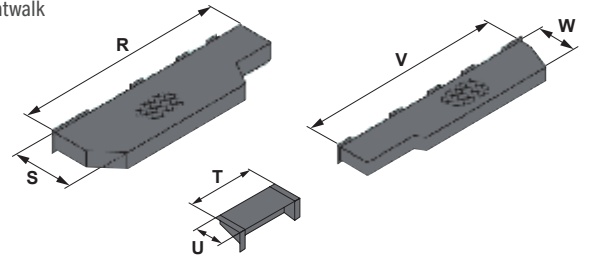
Upper frame



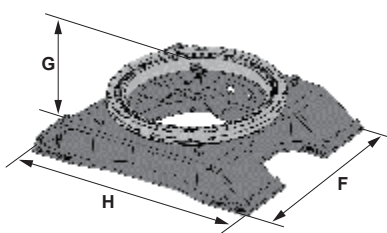
Counterweight



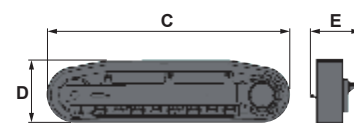
Catwalk



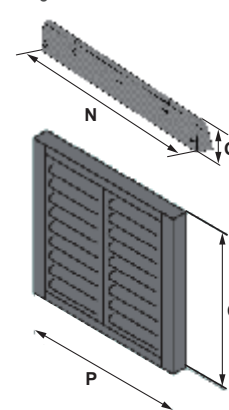
Center frame



Track frame



Right duct



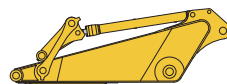
Covers



Boom



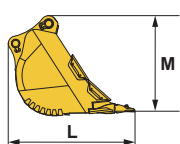
Arm



Handrail



Bucket



Arm cylinder



Boom cylinder



Exhaust tube



Standard and optional equipment

Engine

Komatsu SAA6D170E-7 engine	●
Automatic engine warm-up system	●
Dry type air cleaner, double element	●
Large capacity fuel pre-filter with water separator	●
Variable speed cooling fan, hydraulic drive, reversible	●
Coolant filter	●
Auto-decelerator, auto-idling system	●
Auto idle shutdown (programmable)	●
Alternator 24 V/90 A	●
Batteries 2 x 12 V/220 Ah	●
Starter motor 24 V / 11 kW	●

Hydraulic system

Fully hydraulic, with Open-Center Load-Sensing and engine speed sensing (Pump and engine mutual control system)	●
In-line high pressure filters	●
2 speed travel system with auto shift	●
3 working modes (Power plus, Power, Economy)	●
Pressure Proportional Control (PPC) hydraulic control system	●
Automatic swing holding brake	●
Heavy lift mode	●
Shockless control system for boom	●
Two-mode setting for boom	●

Undercarriage

700 mm double grouser shoes	●
Full length track roller guards	●
Track frame undercovers (centre)	●
Track guiding guards (each side)	●
Travel motor guards	●
Rock protectors	●

Cabin

Bolt-on top guard, OPG Level 2 (ISO 10262)	●
Cab with fixed type front window	●
Heated and ventilated high-back air-suspended seat, console mounted height adjustable arm rests	●
Automatic climate control system, with defroster	●
Large high resolution LCD color monitor	●
Bluetooth® radio with USB	●
Auxiliary input (3,5 mm jack)	●
12 V power supply	●
Cigarette lighter and ashtray	●
Beverage holder	●
Sun visor	●
Windshield washer and wipers	●
Mirrors (RH,LH)	●
Washable cab floor mat	●

Service and maintenance

Equipment Management Monitoring System	●
Komtrax Plus	●
Preventive Maintenance (PM) tune-up service connector	●
One-touch engine oil drainage	●
Automatic greasing system	●
Grease gun, electric pump	●
Electric priming pump for fuel	●
Fuel quick charge system	●
Toolkit	●

LED lighting system

Working lights: 2 boom, 2 cab roof, 2 frame	●
Walkway light	●
Beacon	●
Step light with timer	●
Rear working light	●

Safety equipment

KomVision surround view system	●
Hydraulically operated stairway	●
Emergency engine stop switches	●
Secondary engine shut down switch	●
Battery disconnect switch	●
Circuit breaker	●
Neutral position detection system	●
Lock lever	●
Audible travel alarm	●
Seat belt indicator	●
Horn, air	●
Flashing light connected with horn	●
Wide catwalk	●
Hand rails & guard rails	●
Slip-resistant plates	●
Anchor point for safer access	●

Work equipment

7800 mm SP boom	●
3400 mm SP arm	●
Komatsu buckets	○

Other equipment

Counterweight	●
Strengthened revolving frame underguards	●
Vandalism protection locks	●
Radiator and oil cooler dustproof net	●

Further equipment on request

- standard equipment
- optional equipment

This specification sheet may contain attachments and optional equipment that are not available in your area. Please consult your local Komatsu distributor for those items you may require. Materials and specifications are subject to change without notice.

The Bluetooth® word mark and logos are registered trademarks owned by Bluetooth SIG, Inc. and any use of such marks by Komatsu Group is under license. Other trademarks and trade names are those of their respective owners.

Your Komatsu partner:

KOMATSU

[komatsu.com](https://www.komatsu.com)