



At high level a powered scaffold hoist crane runway system to lower and raise debris and materials to the roof terrace area of 13 Clark House.

13 Clark House

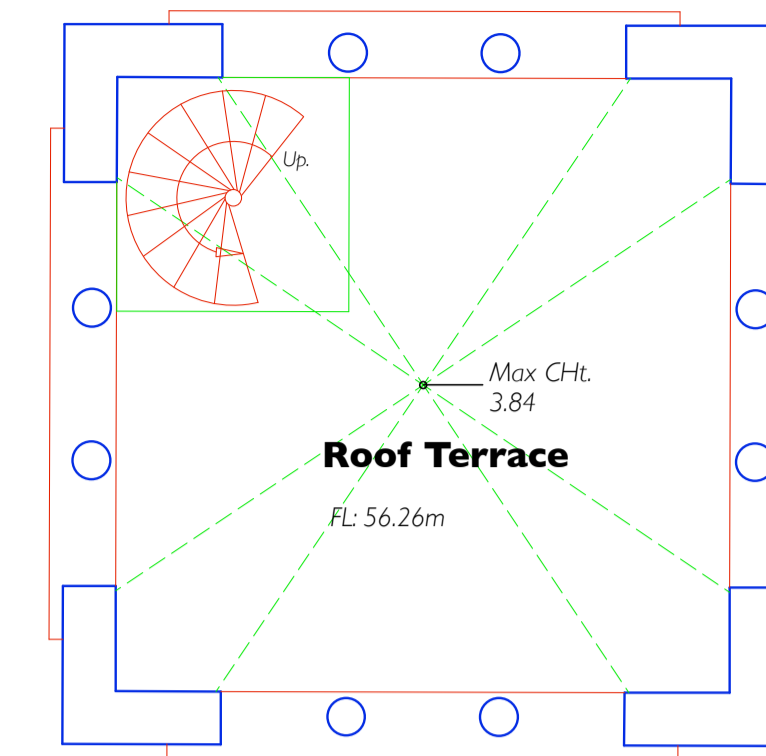
Tower location to avoid windows of the apartments to the lower floors.

Proposed 2.4m high hoarding to three sides of the tower with decorated finish and lighting to protect the scaffold tower. Local locked door access. Ground footprint c. 2 x 3.5m. Hoarding Alarmed.

PROPOSED SCAFFOLD TOWER ACCESS FOR MATERIALS & DEBRIS MOVEMENT DURING THE REFURBISHMENT WORKS AT 13 CLARK HOUSE.

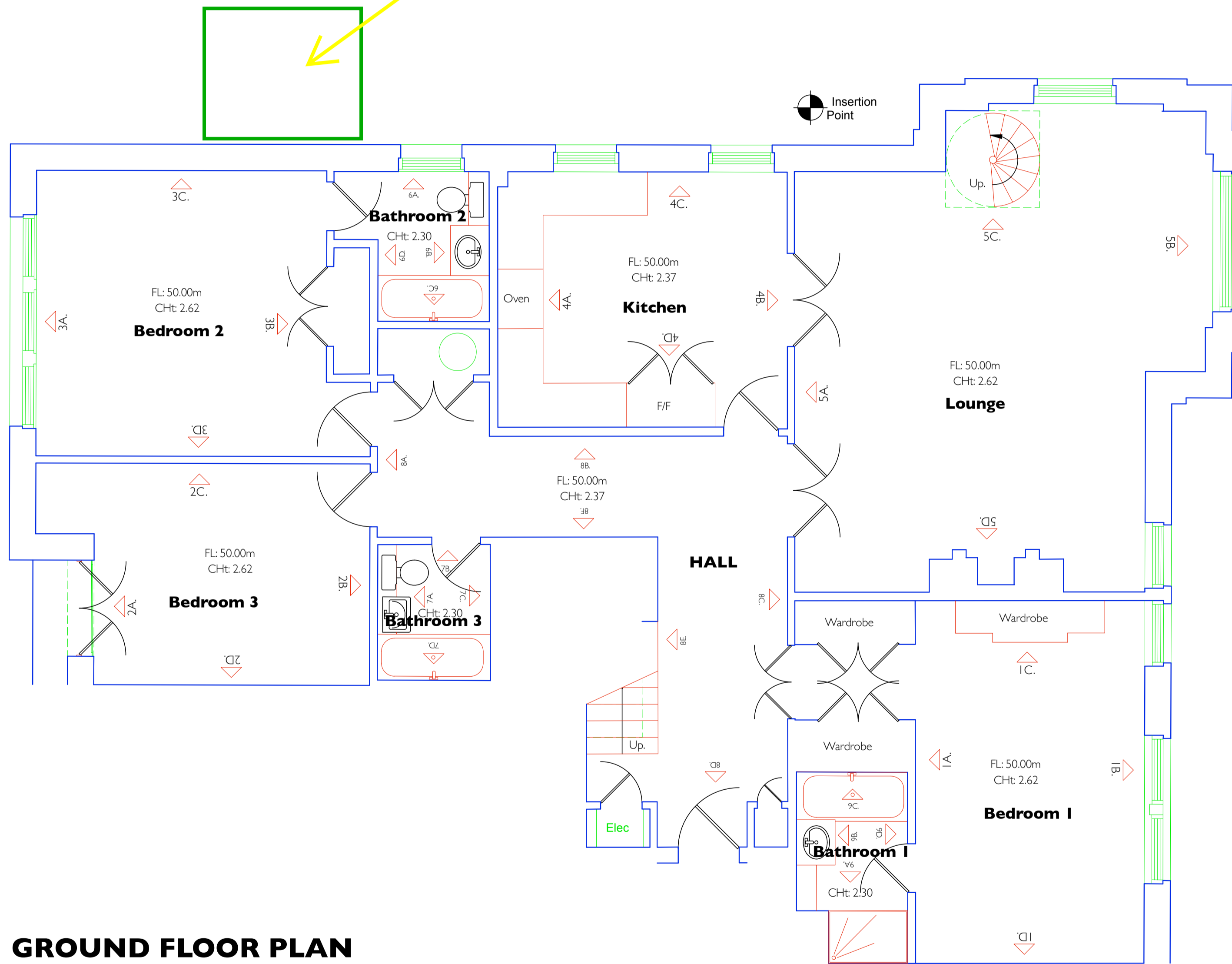
Scaffold tower location.

Elevated gantry and local support tower providing access from the hoist scaffold tower to the roof terrace.

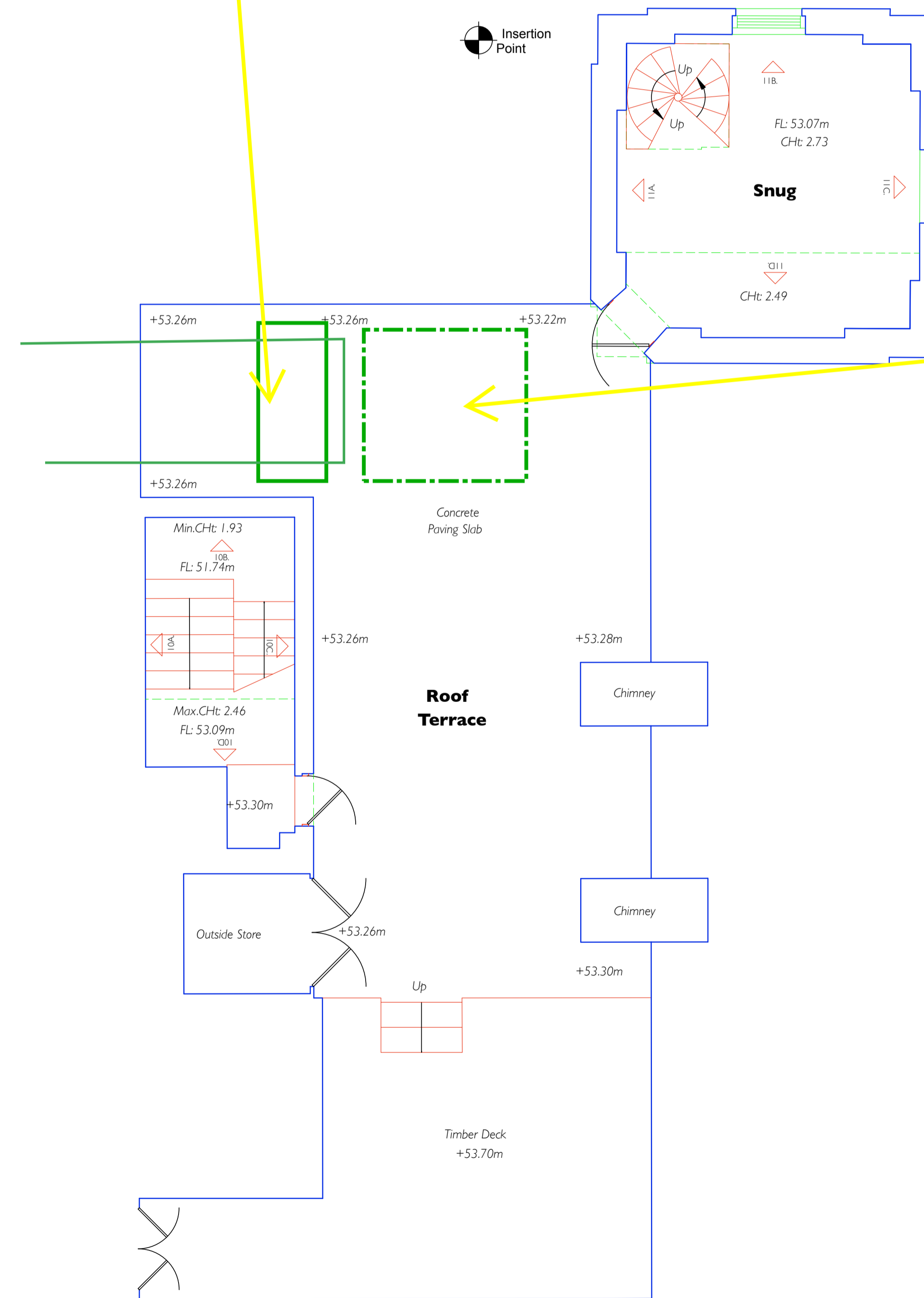


SECOND FLOOR PLAN

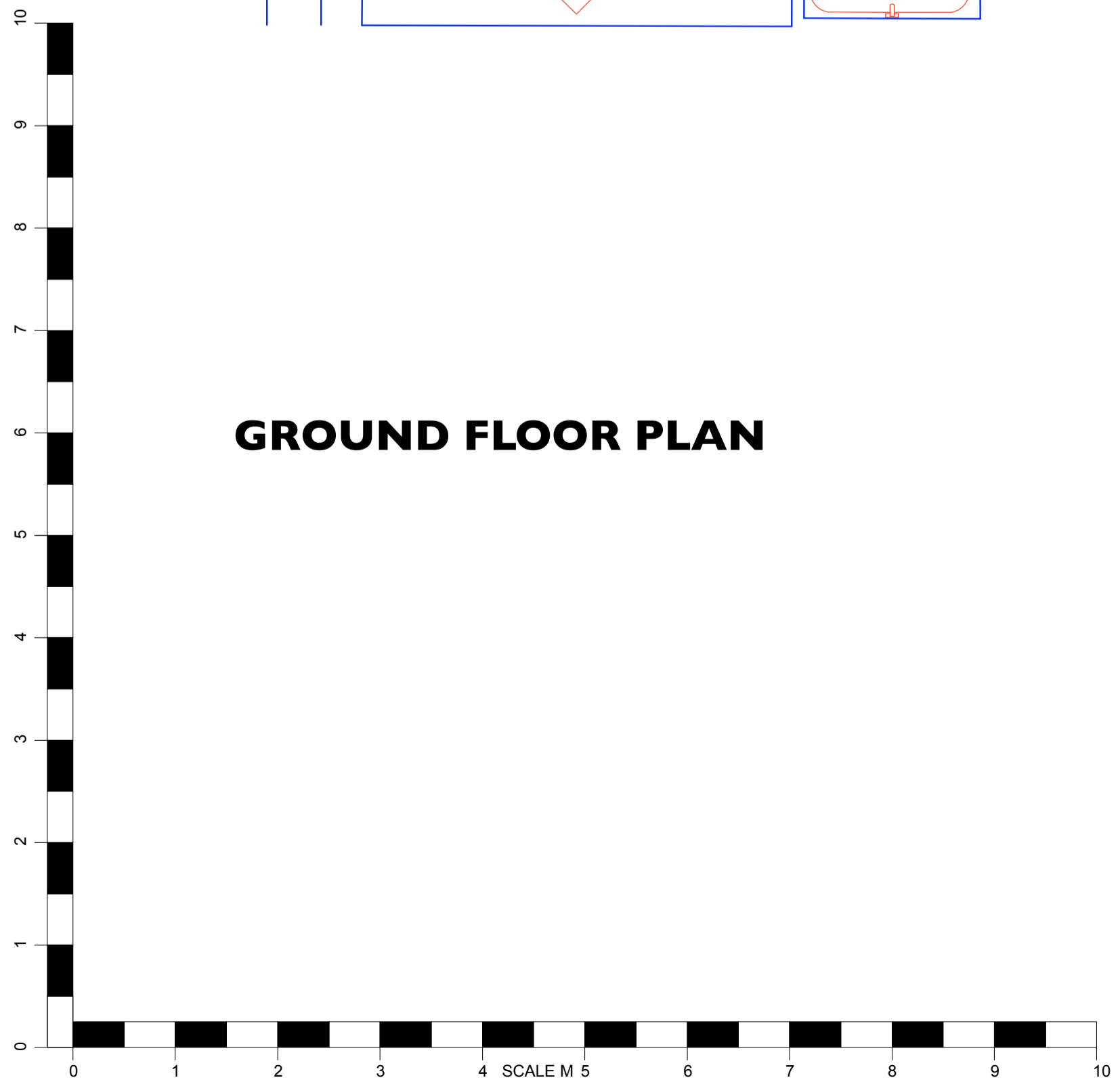
Roof terrace loading location for materials off the scaffold.



GROUND FLOOR PLAN



FIRST FLOOR PLAN



LEONARD ARCHITECTURE LTD
ARCHITECTURE - INTERIOR DESIGN

HURLINGHAM STUDIOS
RANELAGH GARDENS
FULHAM
LONDON
SW6 3PA

Tel: 020 7610 6827
Mobile: 07831 549946
info@leonarddesign.com

THIS DRAWING IS THE COPYRIGHT OF LEONARD ARCHITECTURE LTD. ©

Project
APARTMENT K31 CLARK HOUSE
552 THE KINGS ROAD
LONDON SW10 0RS

Drawing
EXISTING FLOOR PLANS

Scales 1:50 at A1 or 1:100 at A3	Drawn PTADT
Date AUGUST.2023	Drawing No K31-030



Interim scaffold gantry support with scaffold gangway above.