



**JMPM Ltd**  
Property Maintenance Solutions

# COMPANY OVERVIEW

---

RIGHT FIRST-TIME ATTITUDE TO QUALITY!

2024



# Table of **CONTENTS**

---

About us	4
Our Services	6
Coverage Area	7
Accreditations	8
Org Chart	9
Our Clients	11
Case Studies	12
Call-out Rates	13
Contact Us	14



# ABOUT US

J. Munro Property Maintenance Limited was founded by James Munro in May 2002 and operates primarily in the commercial property sector covering all aspects of property maintenance services.

Managing Director, James Munro a fully qualified JIB electrician by trade formed the company after noticing a gap in the market for a good, reliable, quality based 'Maintenance Service Provider' that had the skills and experience to cover a wide range of disciplines across the property maintenance sector.

Our head office is based in Farnborough, Kent, where we direct our team of engineers to provide maintenance services to a diverse range of clients across London & the Southeast.

Our approach has always been to develop close working relationships with our clients to understand their needs and to assist with budget constraints when planning maintenance works & services.

At J. Munro Property Maintenance, we believe this approach has never been more relevant than in the present climate, therefore we continue to be firmly committed to a proactive professional approach to problem solving.

The service that we provide is based on professional advice, given by capable and experienced people committed to a culture where there is:-

- Focus on the Client's objectives
- Commitment to budget and programme
- Strong emphasis on team working
- Co-operation and commitment
- Careful planning and co-ordination
- Application of sound management techniques
- Thoughtful and considered decision making
- Consideration to the environment

Right first-time attitude to quality!



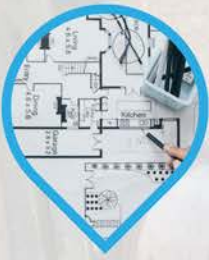
*"We have grown steadily over the past twenty-two years with our client list expanding out to the commercial, residential & Industrial markets. This is mainly due to our commitment in delivering a good and reliable service to our clients no matter how big or small the job".*

**-James Munro, Managing Director**





# OUR SERVICES



**Fit-out &  
Refurbishment  
Projects**



**Fire Door  
Maintenance &  
Installation  
(BMTRADA)**



**Fabric Repairs  
& Maintenance**



**Mechanical &  
Electrical  
Installation &  
Maintenance**



**Periodic  
Inspection &  
Testing**



**Portable  
Appliance  
Testing**



**Painting &  
Decorating**



**Carpentry  
Works  
(All Aspects)**



**Flooring Works  
(All Aspects)**

# COVERAGE AREAS





# ACCREDITATIONS



Electrical



SSIP



Gas Safe



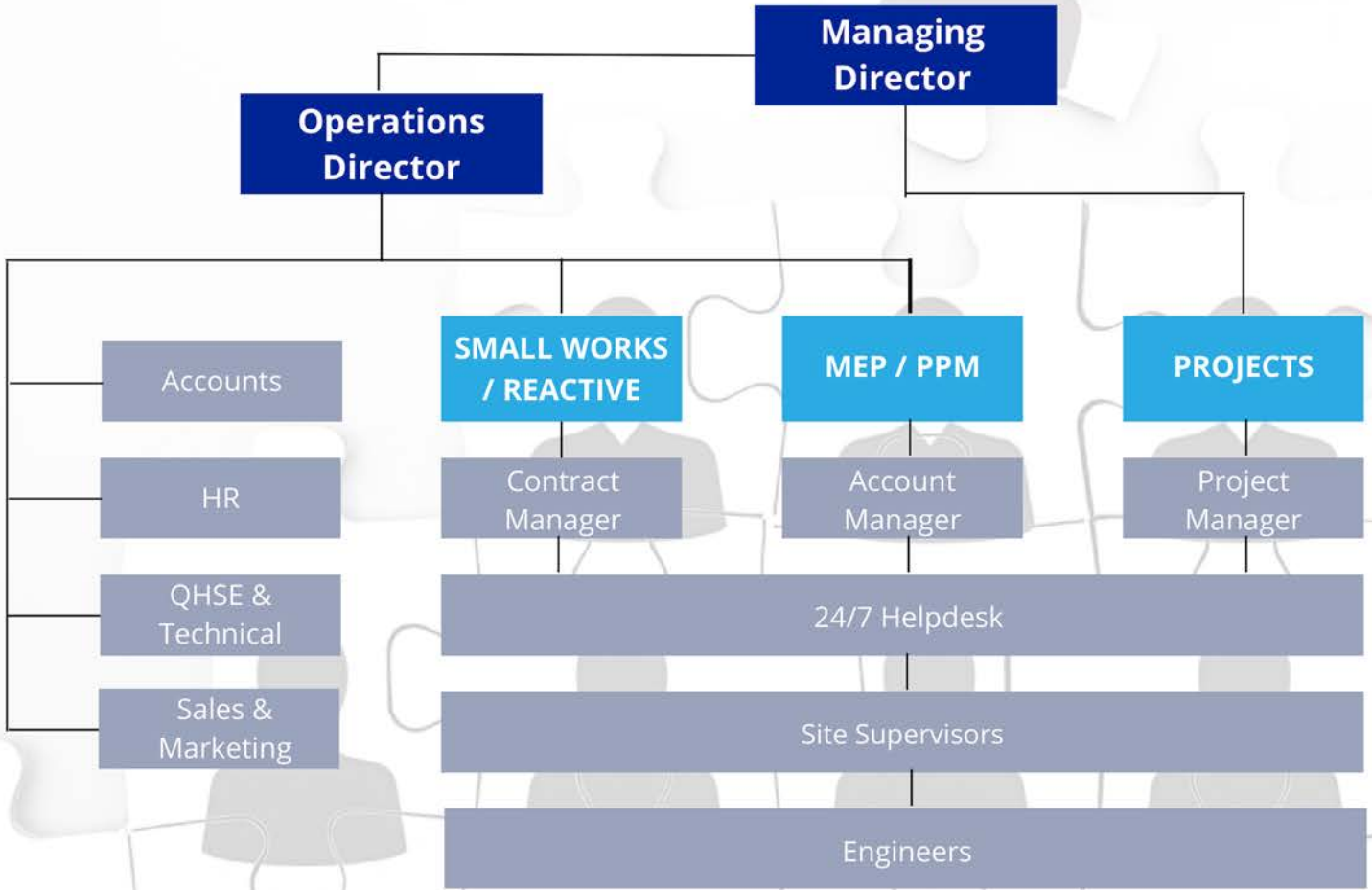
ISO 9001 & 14001



BMTRADA

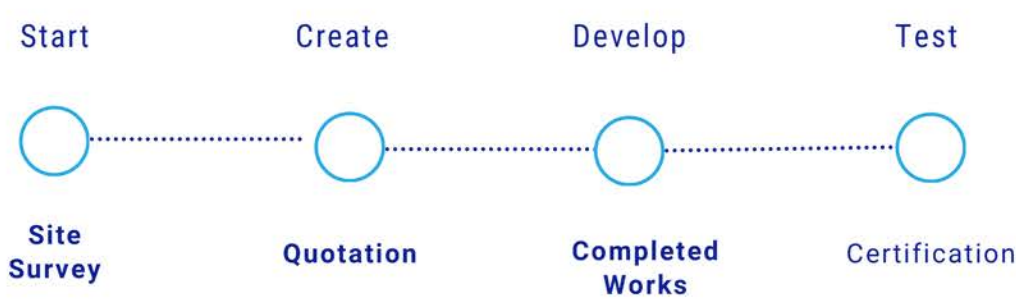


# ORGANISATION CHART





# WORK PLAN





# OUR CLIENTS





# CBRE/WEWORK BARISTA PROJECT

To design, supply & install new bespoke Barista Stations across 8no WeWork sites in London, & 1no site in Manchester.

## OBJECTIVES

JMPM Ltd were instructed by CBRE GWS to undertake the design, manufacture and delivery / installation of 9no new bespoke Barista Stations to various WeWork Sites.

The project included the dismantling and disposal of the existing barista stations, along with all required mechanical and electrical works in order to make the new stations operational.

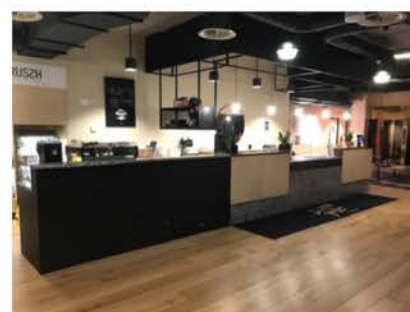
## SOLUTIONS

JMPM Ltd worked in conjunction with our design team and supply partners to ensure that we met the requirements of the Client, whilst also completing each installation without impacting any business activities.

In order to achieve this JMPM carried-out various elements of fabrication of the units off-site in our workshop, saving valuable time when our installation team arrived on site. We then commenced each Barista installation on Friday evening upon close of business, working throughout the weekend to ensure that we could test, commission and hand-over each station to the Client by Sunday evening. Each Barista Station was fully operational by Monday morning.

## CHALLENGES

Aside from creating a workspace / facility that was fit for purpose, and also making a bold statement in terms of design appearance, the main challenge facing JMPM Ltd with this project was to successfully complete each installation whilst ensuring that there was zero impact to trading of the Barista Station or WeWork office operations.





# CONTACT US



01689 837 074



helpdesk@jmpm.org.uk



www.jmpm.org.uk

# COMPANY OVERVIEW

---

2024



**JMPM Ltd**  
Property Maintenance Solutions