



Articulated Assessment Transfer Task

Japanese

Inside-Outside Spaces

Shiyo Kuo-Flynn

Context

For this year's Japan Day at Central Park, you have been asked to volunteer at the tourism booth for educating visitors about the customs of a Japanese-style inn.

Authentic Materials

<u>Webpage of Japanese inn</u>	<u>Inn and hotel finder</u>	<u>Article on Japanese and Western style inns</u>
--	---	---

ARTICULATED ASSESSMENT TRANSFER TASK (AATT)

INSIDE-OUTSIDE SPACES SHIYO KUO-FLYNN



ENDURING UNDERSTANDINGS

Cultural perspectives and practices of inside-outside distinction influence the way we live.



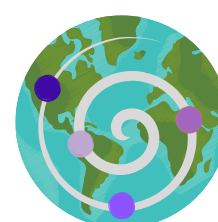
ESSENTIAL QUESTIONS

What does inside-outside distinction in our home space tell us about our lifestyle?
 To what extent does our personal space change from one culture to another?



CONTEXT

For this year's Japan Day at Central Park, you have been asked to volunteer at the tourism booth for educating visitors about the customs of a Japanese-style inn.



ARTICULATION SPIRAL POINTS

Describe concept with visual supports.
 Offer practical information for different needs.
 Justify opinions on inside-outside space.



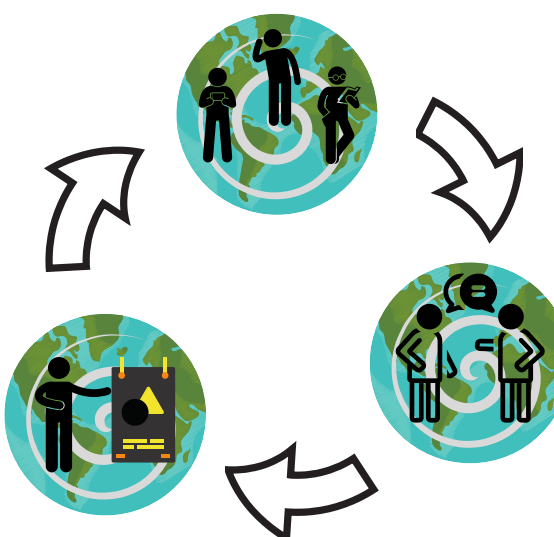
INTERCULTURAL TRANSFER TARGETS




I can recognize features of Japanese living spaces.
 I can organize descriptions of a Japanese inn.
 I can share characteristics of Japanese practices.
 I can compare Japanese living spaces with those of my own culture.



MEDIATION FOR TRANSFER

Bridge and exchange ideas and concepts of inside outside spaces.
 Identify visuals, objects, and examples.
 Explain features of Japanese spaces.
 Compare and contrast characteristics of Japanese and Western living space.



	PERFORMANCE TARGET LEVEL Novice High	PERFORMANCE TARGET LEVEL Intermediate Mid	PERFORMANCE TARGET LEVEL Advanced Low
	AUTHENTIC MATERIAL DESCRIPTIONS Webpage of Japanese inn	AUTHENTIC MATERIAL DESCRIPTIONS Inn and Hotel Finder	AUTHENTIC MATERIAL DESCRIPTIONS Article on Japanese and Western Style Inns
INTERPRETIVE TASK 	Students watch a video on a Japanese-style inn, identify objects and form three questions about the video. I can identify and recognize the objects used inside a Japanese-style inn.	Students visit a Japanese-style inn reservation website to select three different inns from different parts of Japan. Students pose three questions and write a brief description for each inn that they selected. I can organize the descriptions given for each Japanese-style inn. I can write a description of each inn.	Students read the online article on Japanese-style inn vs. Western-style hotel and summarize their findings by comparing and contrasting the two different types of hotel accommodation. I can summarize differences and details between the Japanese-style inn and Western-style hotel and their significance.
INTERPERSONAL TASK 	Students selects one item that attracted their attention the most from the video and describe it for their peers. I can share and talk about the item that I liked with my peer after watching a video.	Students select one inn from the website, share it with their peer and ask and answer their questions about the inns. They can discuss which inn seems more attractive to tourists with different needs. I can exchange information, ask questions and discuss about the Japanese style-inn with my peers.	Students exchange their summaries, decide, and agree on which summaries to include in the presentation for the tourism booth. I can read and provide my peers with feedback for the summary related to the different types of hotel accommodation in Japan.
PRESENTATIONAL TASK 	Students design an infographic of what is inside a Japanese style inn. I can list the features and details of the inn.	Students create a brochure that introduces the Japanese-style inn they selected for different groups of tourists. I can present information related to the Japanese-style inn and explain to others in the class.	Students prepare a video and to show at the tourism booth on Japanese-style inn vs. Western-style hotel and present advantages and disadvantages of each type of hotel accommodation. I can express opinions on hotel accommodations in Japan and support my opinions using authentic resources.