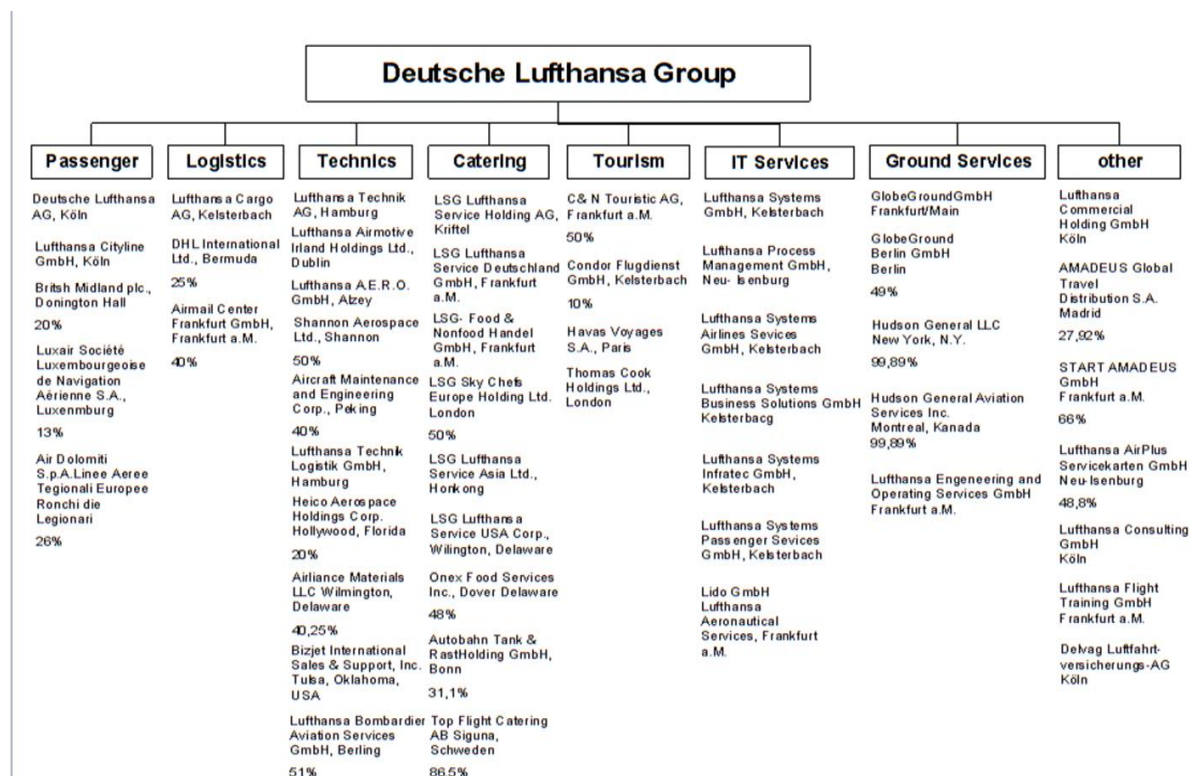


## Appendix 1: Organizational Structure of Deutsche Lufthansa Group 2001



## Appendix 2: Lufthansa Cargo AG Financial Data 1998-2000

Lufthansa Cargo AG	2000	1999	1998
Revenue (mill. EUR)	2,563.6	2,081.7	1,965.1.3
Freight and Mail (kt)	1,810	1,754	1,712
FTK offered (mill.)	11,241	10,344	10,021
RTK (mill.)	7,666	7,072	6,696
Load factor (%)	68.2	68.4	66.8
Operating profit (mill EUR)	227.5	54.4	138.4
Employees	5,342	5,164	4,971