

HOPKINS
FOUR
BEDROOM
HOME

BLOOR HOMES



A four bedroom detached home with spacious lounge and fantastic open plan kitchen / dining / family area featuring French doors leading to the garden. The ground floor also comprises a utility cupboard and cloakroom. Upstairs, is home to the family bathroom with separate bath and shower cubicle, plus four bedrooms, the master bedroom benefits from fitted wardrobes and en suite facilities.

HOPKINS

A SPACIOUS FOUR
BEDROOM FAMILY HOME

**HOPKINS
FOUR
BEDROOM
HOME**

FIRST FLOOR:

BEDROOM 1
2.90m x 3.15m
9'6" x 10'4"

EN SUITE

BEDROOM 2
3.57m x 2.45m
11'8" x 8'0"

BEDROOM 3
2.45m x 3.15m
8'0" x 10'4"

**BEDROOM 4 /
STUDY**
3.31m x 2.28m
10'10" x 7'6"

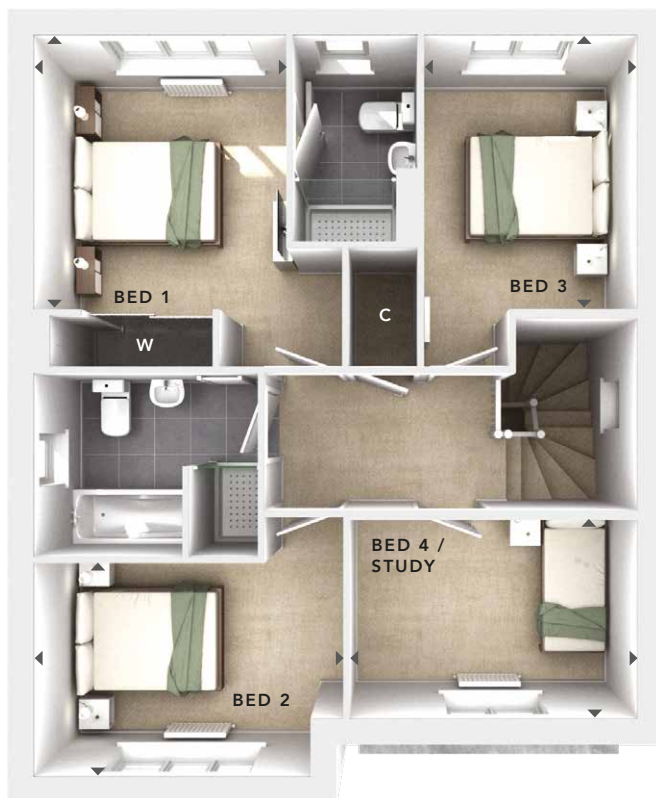
BATHROOM

GROUND FLOOR:

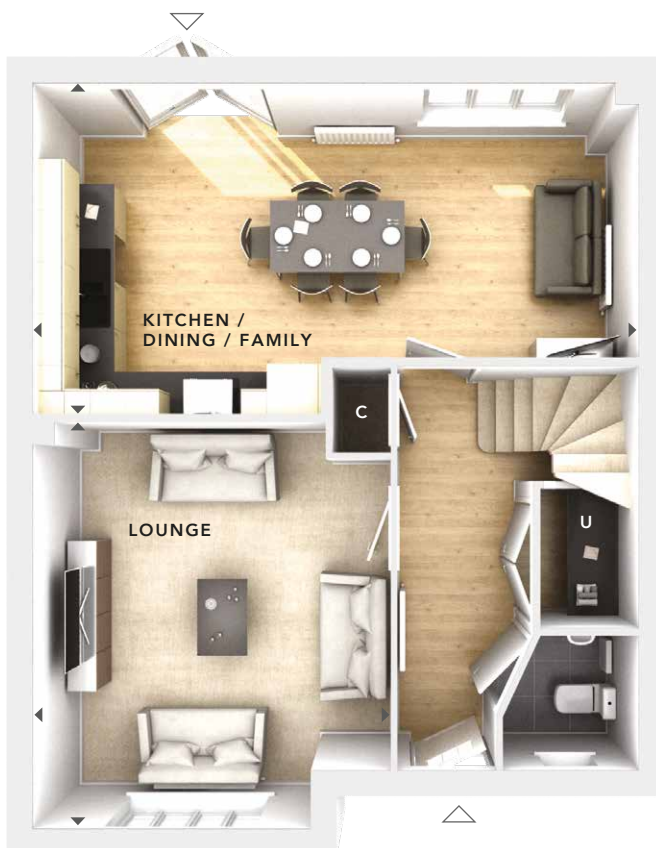
LOUNGE
4.11m x 4.64m
13'6" x 15'3"

**KITCHEN /
DINING / FAMILY**
6.95m x 3.76m
22'10" x 12'4"

CLOAKS



**FIRST
FLOOR**



**GROUND
FLOOR**

W	- Fitted Wardrobes
C	- Storage
U	- Utility Cupboard
△	- External Access
◀▶	- Measurement Points
470 NSS BRICK 6.3	



These particulars are intended as a preliminary guide for prospective purchasers and should not be relied upon. The elevational treatment for individual house types shows a typical arrangement. Details of materials and design treatments may vary. Any artist impressions shown are not intended to represent any particular plot. Purchasers are advised to inspect the layout plan to establish the arrangement of the house and surrounding property. Internal layouts show a general arrangement which may vary from plot to plot. Room sizes given are approx. overall finished room sizes and subject to normal building tolerances (ie ± 75mm). In all instances purchasers are advised to inspect plot specific information available from our sales team. Nothing in these particulars or verbal assurance shall form or constitute part of any contract, and are given without any responsibility on behalf of Bloor Homes.