

BERRY
TWO
BEDROOM
BUNGALOW

BLOOR HOMES



A beautiful two bedroom bungalow featuring a spacious open plan kitchen / living area with French doors leading to the rear garden. Two generous double bedrooms and a shower room complete this home.

BERRY

A STUNNING TWO
BEDROOM BUNGALOW

**BERRY
TWO
BEDROOM
BUNGALOW**

GROUND FLOOR:

KITCHEN / LIVING

7.21m x 3.86m
23'8" x 12'8"

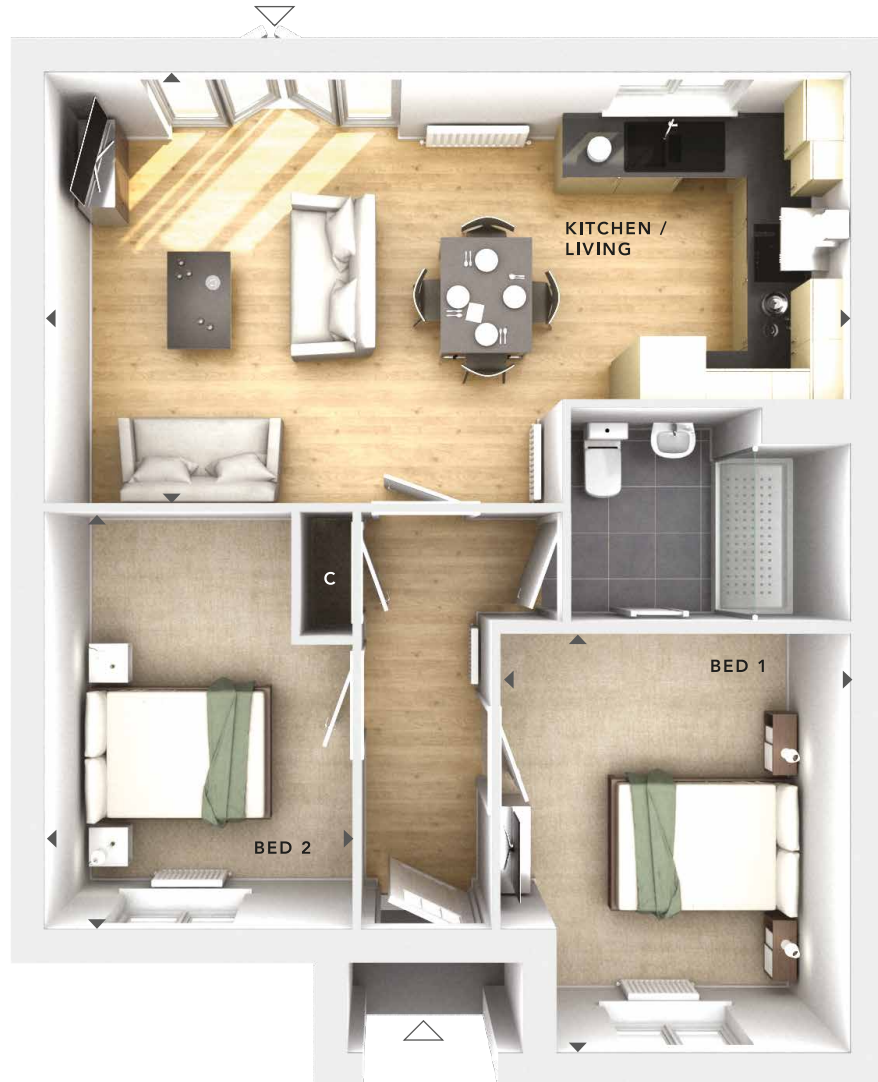
BEDROOM 1

3.13m x 3.75m
10'3" x 12'4"



BEDROOM 2

2.75m x 3.74m
9'0" x 12'3"

BATHROOM



**GROUND
FLOOR**

- C** - Storage
-  - External Access
-  - Measurement Points

© Bloor Homes • 103SP B 4.11

BLOOR HOMES

These particulars are intended as a preliminary guide for prospective purchasers and should not be relied upon. The elevational treatment for individual house types shows a typical arrangement. Details of materials and design treatments may vary. Any artist impressions shown are not intended to represent any particular plot. Purchasers are advised to inspect the layout plan to establish the arrangement of the house and surrounding property. Internal layouts show a general arrangement which may vary from plot to plot. Room sizes given are approx. overall finished room sizes and subject to normal building tolerances (i.e. ± 75mm). In all instances purchasers are advised to inspect plot specific information available from our sales team. Nothing in these particulars or verbal assurance shall form or constitute part of any contract, and are given without any responsibility on behalf of Bloor Homes.