

314E CR

Hydraulic Excavator



Engine

| | | |
|-----------------------|------------------|-------|
| Engine Model | Cat® C4.4 ACERT™ | |
| Net Power – SAE J1349 | 67 kW | 89 hp |

Drive

| | | |
|----------------------|----------|------------|
| Maximum Travel Speed | 5.4 km/h | 3.4 mph |
| Maximum Drawbar Pull | 113 kN | 25,400 lbf |

Weight

| | | |
|------------------|-----------|-----------|
| Operating Weight | 14 800 kg | 32,600 lb |
|------------------|-----------|-----------|

If you are looking for a compact, productive, and fuel-efficient 14 metric ton machine, you will find it in the all new 314E CR. Built to meet today's U.S. EPA Tier 4 Interim emission standards, the 314E makes an excellent choice for people who need a well-balanced and versatile utility machine. In fact, this new model comes equipped with several new features and benefits that will please both you and your operators.

Contents

Compact Radius4
 Engine5
 Hydraulics6
 Operator Station.....8
 Structures & Undercarriage9
 Work Tools.....10
 Front Linkage12
 Integrated Technologies.....13
 Serviceability14
 Safety15
 Complete Customer Care.....16
 Sustainability17
 Specifications.....18
 Standard Equipment.....32
 Optional Equipment.....33
 Notes.....34





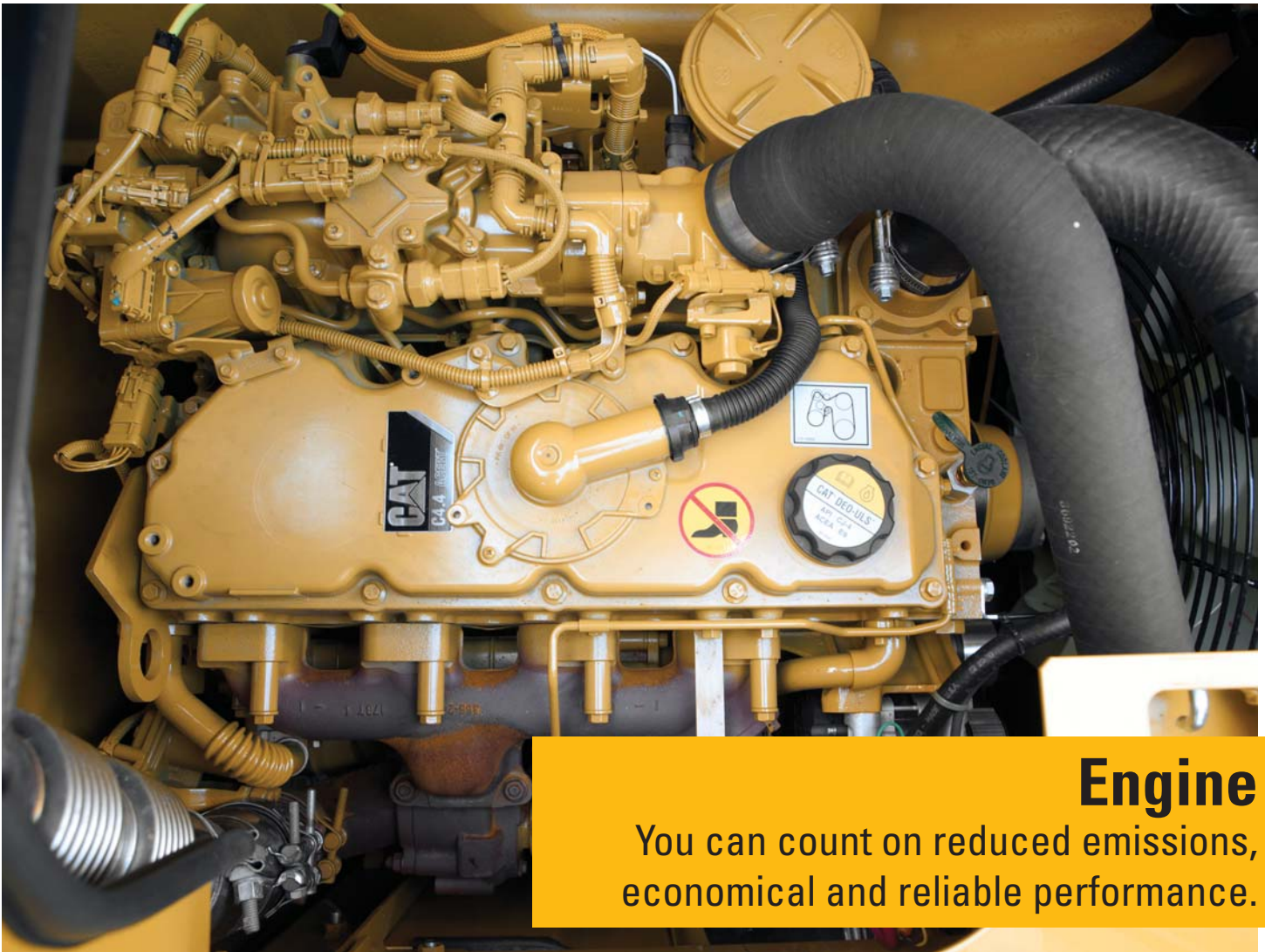
Compact Radius

You can have flexibility and peace of mind in tight quarters.



If your work space is restricted, the 314E CR makes an ideal choice because it can get up close to new residential construction, buildings, fences, hillsides, or any other “crowded” environment with ease.

When rotated 90 degrees and working over the side, the 314E CR’s counterweight extends only a bit beyond the track width and doesn’t exceed the length of the track at all. This significantly reduces the risk of your operator damaging the machine and surrounding structures in full swing, which makes for a safer work environment and lower owning and operating costs for your business.



Engine

You can count on reduced emissions,
economical and reliable performance.

The Cat C4.4 ACERT engine is built to meet your demanding needs all day every day. There is no interruption to your job process as our new regeneration system works automatically with no operator intervention required.

Power Modes

The 314E features two power modes: High power mode is when you need maximum production; economy mode is when you need to balance performance with fuel economy.

Two additional fuel-saving features are on demand engine power and engine idle shutdown. On demand engine power keeps speed low during light loading and idling and automatically adjusts speed up when it senses a heavier load; engine idle shutdown automatically shuts the engine off when it's been idling for more than a specified amount of time that you set, which can save you significant amounts of fuel, reduce your emissions, and even reduce your accumulated service hours, which will extend service intervals and improve re-sale value.

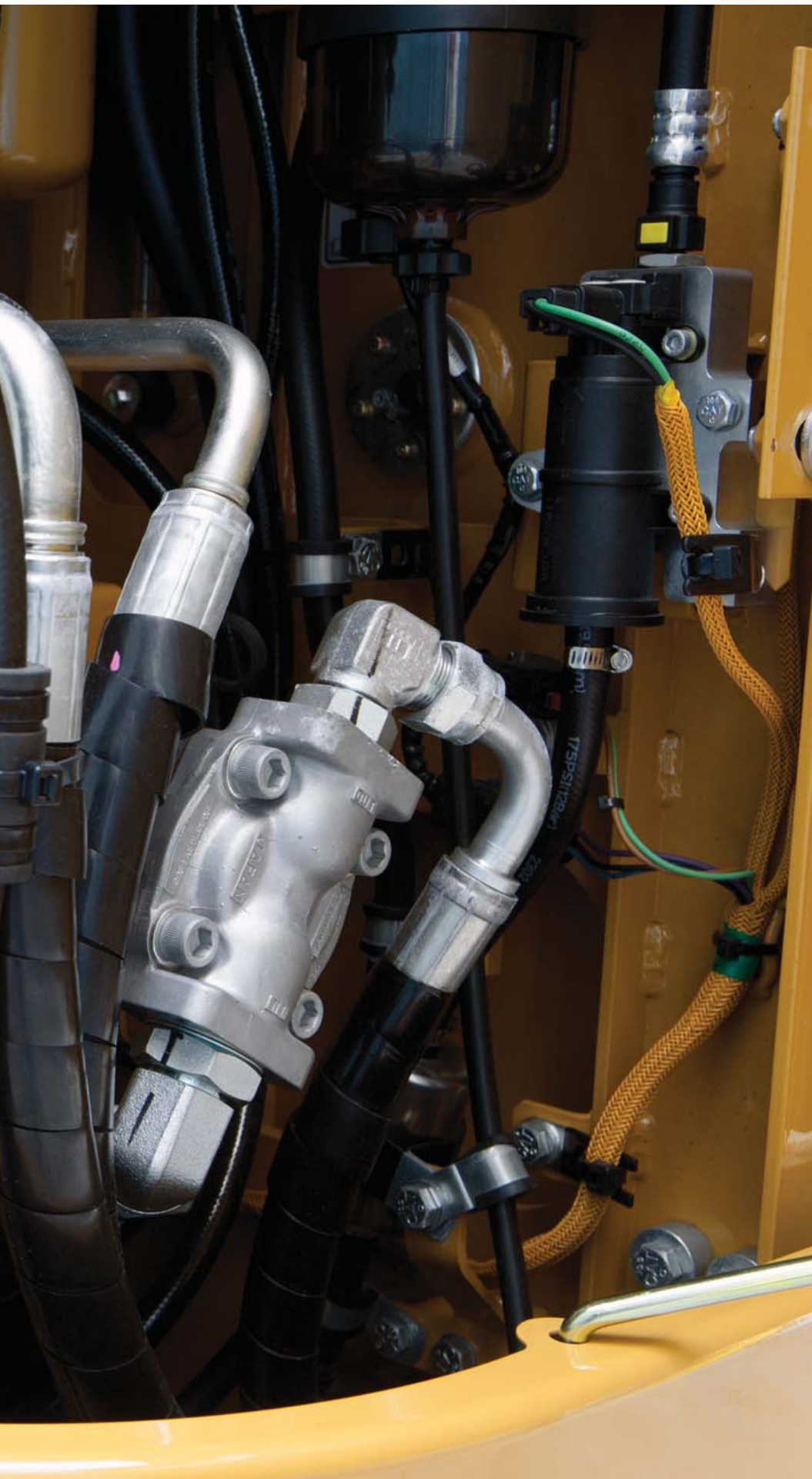
Biodiesel-Ready Fuel System

The C4.4 ACERT engine runs on ultra-low-sulfur diesel fuel, and you have added flexibility of running on B20 biodiesel fuel that meets ASTM 6751 standards. Just fill it up and go.

Hydraulics

You can move dirt, rock, and debris with speed, precision, and efficiency.





Hydraulic System

One of the biggest contributors to your productivity and fuel savings is a well-designed hydraulic system, and this is where Cat excavators stand apart. The 314E CR is loaded with several unique features that will put more power to the ground with less money out of your pocket.

Pumps and Valves

The main control valve is built to work with any tool, allowing you to take on multiple tasks with one machine. The main pumps are located side by side and are driven directly by the engine for the highest level of efficiency to reduce your fuel costs.

Boom Regeneration

Electric boom regeneration results in less pressure loss, higher controllability, more productivity, and lower operating costs for you; it works by reusing the flow of oil that travels from the head of the boom cylinder to the rod end of the boom cylinder during your operator's everyday "boom down" operation. During boom regeneration, engine speed is controlled to be low in order to save extra oil flow from going to the boom cylinders, which saves energy.

Operator Station

Your operators will enjoy the incredibly quiet and comfortable cab.



Monitor

Your operators can keep safely focused on the job at hand with a high-resolution LCD monitor that is programmable in 44 languages to support today's diverse workforce. It also projects the image from an available rearview camera, further increasing the safety and productivity of your job site.



Seats

Mechanical and air suspension seat options with heated and air-cooled availability give operators all the comfort they need for a long day of work. All seats include a reclining back, upper and lower seat slide adjustments, and height and tilt angle adjustments.

Controls

Your operators can adjust the right and left joysticks for individual preferences, helping the operator become more comfortable, more productive, and more alert.

Power Supply and Auxiliary Audio Port

To keep your operators happy, comfortable and connected, one 12-volt power supply is located on the radio near key storage areas for charging electronic devices such as an MP3 player and cell phone. An auxiliary port allows your operators to plug and play MP3 audio through the cab's speakers.

Storage

Your operators have storage spaces located in the rear. A dedicated space near the auxiliary power supply will hold an MP3 player and cell phone. The drink holder accommodates large mugs with handles, and a shelf behind the seat stores large lunch or toolboxes.

Automatic Climate Control

An automatic climate control system features seven air outlets with filtered ventilation to make your operators comfortable in either hot or cold climates.

Structures & Undercarriage

You can take on a variety of tough tasks with this built-to-last machine.



Frame

You can expect excellent quality, reliability, and durability with the 314E CR's reinforced lower and upper frames. Both are built to handle a hard day's work over and over again.

Undercarriage

Long undercarriage supports any type of work you can do with a 14 metric ton machine. The track rollers are a double solid-pin-type design to improve reliability; an optional two-piece guiding guard helps maintain track alignment and improves the machine's overall performance.

Counterweight

The 314E CR has two counterweight options – 3.06 and 3.56 mt (3.4 and 3.9 t) – to optimally match your machine to the task at hand, whether it's doing light trenching or heavy lifting. With integrated links, you can also easily – and safely – remove the counterweight for maintenance or shipping.



Work Tools

You can dig, hammer, rip, and cut with confidence.



You can extend the versatility and performance of your machine with the full lineup of Cat work tools. Each tool equips your machine to perform the many different tasks found at a variety of job sites.

Couplers: Quick Tool Changes

Imagine the productivity you'll achieve with a quick coupler. Combine a robust coupler with a common work tool inventory that can be shared between same size machines and you'll get performance and flexibility on every job. The Cat Center-Lock™ pin grabber coupler features a patented locking system and highly visible lock. You can clearly see when the coupler is engaged or disengaged from the attachment.

Work Tools: Cut, Crush, Pulverize and Load

No matter your specialty, Caterpillar provides tools that are perfectly matched to get the most out of your Cat machine – quickly and efficiently. Field-installed hydraulic kits are uniquely designed to integrate any Cat Work Tool with your 314E CR.

Buckets: Dig, Move, Load

Cat buckets are designed to fill efficiently so you notice a fast, smooth cycle, which means high productivity each time you dig. Wear characteristics of general duty, heavy duty, and severe duty buckets give you solid performance in a wide variety of material abrasions. Ditch cleaning and other specialty buckets are available when needed.

GRAB, SORT, LOAD



Pro Series Hydraulic Thumbs



Stiff Link Thumbs



Contractors' Grapples



Trash Grapples

DIG & PACK



Ditch Cleaning and Tilt Buckets



General Duty Buckets



General Duty, Wide Tip Buckets



Severe Duty Buckets



Vibratory Plate Compactors

SWAP TOOLS



Center-Lock™ Pin Grabber Coupler

CUT, CRUSH, BREAK & RIP



Scrap & Demolition Shears



Hydraulic Hammers



Front Linkage

You'll experience a long service life even in the harshest of conditions.

Your uptime and service intervals are increased with durable and reliable booms, sticks, and linkage pins. Each boom and stick is built with internal baffle plates for additional strength, and each undergoes ultrasound inspection to ensure you get the durability and reliability you expect for any tough application.

Booms

Two types of booms are available to meet the variety of tasks you take on in a given day. A reach boom offers you excellent all-around versatility and a large working envelope; a power offset boom allows your operator to stay in the same position to load and dump, which increases productivity when your team is working in narrow, restricted space. A unique bucket-to-cab avoidance feature is also included to ensure safe operation.

Sticks

Sticks are matched to the booms. The R3.0 m (9'10") stick is best for when you need deep trenching, longer reach, and top truck loading capabilities. The R2.5 m (8'2") stick provides greater breakout force and increases productivity when you primarily plan on using hydro-mechanical work tools. The R2.1 m (6'11") stick combines with the power offset boom to deliver excellent breakout force and cycle speed in those tough-to-reach places. Your Cat dealer can help you pick the best configuration for your business.

Integrated Technologies

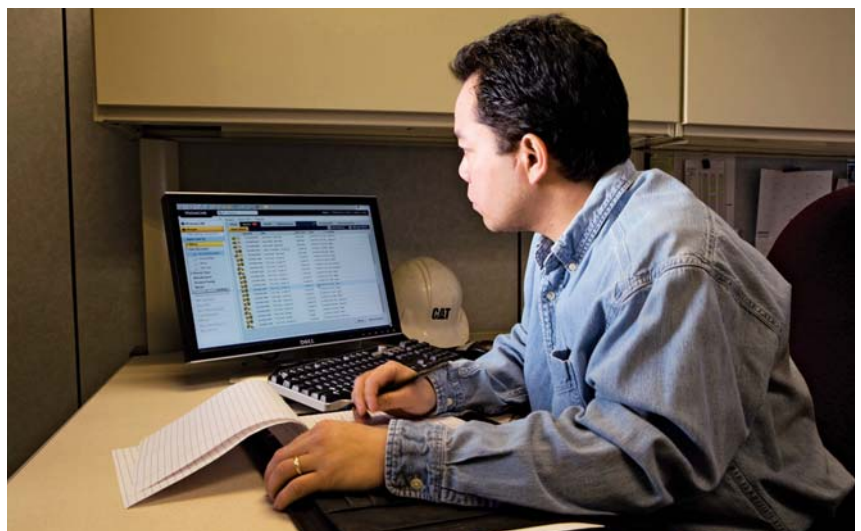
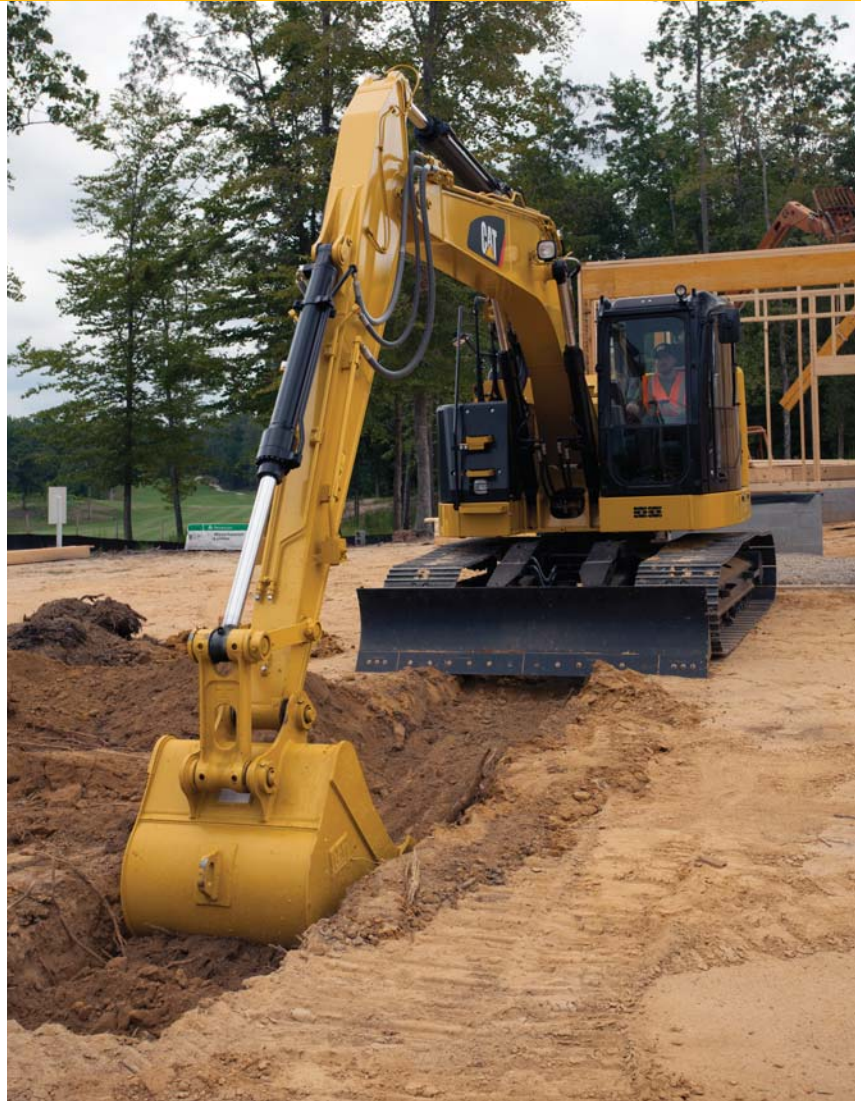
You can make your team's work much easier
and more efficient.

Cat Grade Control Depth and Slope

Cat Grade Control Depth and Slope is a standalone factory offering that allows your operator to reference a site elevation and input simple elevation and slope targets into the display to give them real-time bucket tip position through the cab monitor. This allows them to cut or fill to the target elevation the first time, which minimizes the need and cost for traditional grade checking. It also enhances job site safety and helps your team complete jobs quicker with fewer cycles, which means you'll save money on fuel.

Cat Product Link™

You can monitor and improve your fleet management with optional Cat Product Link. The integrated system reports events, diagnostic codes, hours, fuel consumption, location, and other pieces of detailed machine information to the secured web-based application called Vision Link™. The powerful tools within Vision Link communicate with you and your authorized Cat dealer to allow them to help you avoid downtime and better maintain your fleet.



Serviceability

You can depend on safe, fast, and easy access.



Ground-Level Compartments

Your service technicians have ground-level access to the radiator, pump, and air cleaner compartments through wide service doors, making it easy for them to reach, check, and replace fluids and filters.

Cooling System

The cooling package features an improved oil cooler and engine radiator design mounted side by side and the air-to-air aftercooler and A/C condenser mounted in front. The radiator uses an aluminum square wave fin to prevent clogging with the other components positioned to make cleaning cores easier – a major service convenience.

Other Service Benefits

The engine oil dipstick is conveniently located in the front of the engine compartment.

The fuel tank's remote drain cock makes it easy and simple to remove water and sediment during routine maintenance.

Overfilling the fuel tank is significantly reduced with an integrated fuel level indicator.



Safety

Several built-in features will help protect your people.



Roll-Over Protective Structure (ROPS) Cab

Your operators will benefit from the enhanced protection of a ROPS-certified cab. It is also built to accommodate a Falling Object Guard Structure (FOGS) for industrial applications.

Sound Proofing

Roof lining and sealing make your operator's sound experience inside the cab comparable to any of today's top pickup trucks.

Anti-Skid Plates

Your operator and service technicians' slipping hazards are reduced with anti-skid plates on the surface of the upper structure and the top of the storage box area.

Steps, Hand and Guard Rails

Your service technicians can work securely on the machine with extended hand and guardrails to the upper deck and steps on the track frame and storage box.

Time Delay Lights

The cab and boom lights can be programmed to stay on for up to 90 seconds after the engine has been turned off to help your operators safely exit the machine.

High Intensity Discharge (HID) Lights

You can upgrade to HID for greater visibility in low-light conditions.

Windows

You can easily store both the upper and lower window in cab. You also have great overhead visibility and lighting with a large skylight.

Rearview Camera

Your operator has a clear view behind the machine with an optional rearview camera. The image projects through the standard cab monitor.

Complete Customer Care

Your Cat dealer will support you like no other.



Product Support

You can maximize your machines' uptime with the Cat worldwide dealer network. You can also decrease your repair costs by utilizing Cat remanufactured components while contributing to sustainable development.

Machine Selection

What are your job requirements and machine attachments? What production do you need? Your Cat dealer can provide recommendations to help you make the right machine configuration.

Purchase

You can ensure lower owning and operating costs by utilizing dealer services and financing options.

Customer Support Agreements

Cat dealers offer a variety of customer support agreements and work with you to develop a plan to meet your specific needs. These plans can cover the entire machine, including attachments, to help protect your investment.

Operation

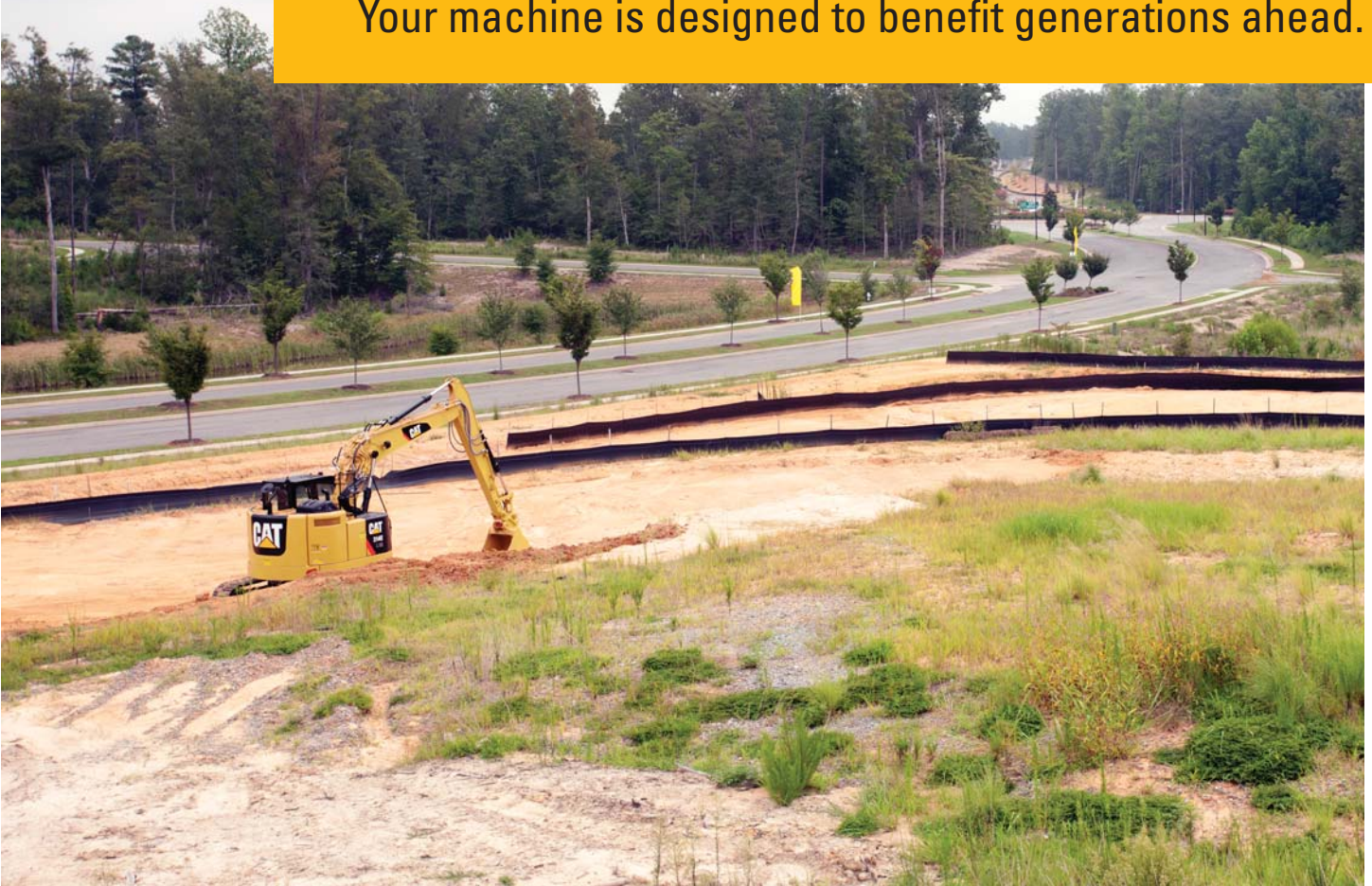
You can boost your profits by improving operating techniques. Your Cat dealer has videos, literature, and other ideas to help you increase productivity. Caterpillar also offers simulators and certified operator training to help maximize the return on your investment.

Replacement

Repair, rebuild, or replace? Your Cat dealer can help you evaluate the cost involved so you can make the best choice for your business.

Sustainability

Your machine is designed to benefit generations ahead.



- The 314E CR is an efficient, productive machine that's designed to conserve our natural resources for generations ahead.
- The C4.4 ACERT engine ensures you meet U.S. EPA Tier 4 Interim emission standards.
- The 314E CR has the flexibility of running on either ultra-low-sulfur diesel (ULSD) fuel with 15 ppm of sulfur or less or biodiesel (B20) fuel blended with ULSD that meets ASTM 6751 standards.
- An overfill indicator rises when the fuel tank is full to help your service technicians avoid spilling.
- An unique engine oil filter eliminates the need for painted metal cans and aluminum top plates. The cartridge-style spin-on housing enables the internal filter to be separated and replaced; the used internal element can be incinerated to help reduce waste.

314E CR Hydraulic Excavator Specifications

Engine

| | | |
|-------------------------|----------------|---------------------|
| Engine Model | Cat C4.4 ACERT | |
| Gross Power – SAE J1995 | 71 kW | 95 hp |
| Net Power – SAE J1349 | 67 kW | 89 hp |
| Bore | 105 mm | 4.1 in |
| Stroke | 127 mm | 5.0 in |
| Displacement | 4.4 L | 270 in ³ |

Weight

| | | |
|------------------|-----------|-----------|
| Operating Weight | 14 800 kg | 32,600 lb |
|------------------|-----------|-----------|

Hydraulic System

| | | |
|---|------------|-------------|
| Main System – Maximum Flow (Total) | 254 L/min | 67 gal/min |
| Swing System – Maximum Flow | 127 L/min | 34 gal/min |
| Maximum Pressure – Equipment | 30 500 kPa | 4,420 psi |
| Maximum Pressure – Power Offset Boom (optional) | 29 900 kPa | 4,340 psi |
| Maximum Pressure – Travel | 35 000 kPa | 5,080 psi |
| Maximum Pressure – Swing | 23 000 kPa | 3,340 psi |
| Pilot System – Maximum Flow | 21.9 L/min | 4.8 gal/min |
| Pilot System – Maximum Pressure | 4120 kPa | 600 psi |
| Boom Cylinder – Bore | 110 mm | 4.3 in |
| Boom Cylinder – Stroke | 1000 mm | 39.4 in |
| Stick Cylinder – Bore | 120 mm | 4.7 in |
| Stick Cylinder – Stroke | 1197 mm | 47.1 in |
| Bucket Cylinder – Bore | 100 mm | 3.9 in |
| Bucket Cylinder – Stroke | 939 mm | 37.0 in |

Drive

| | | |
|----------------------|----------|------------|
| Maximum Travel Speed | 5.4 km/h | 3.4 mph |
| Maximum Drawbar Pull | 113 kN | 25,400 lbf |

Swing Mechanism

| | |
|--------------|-------------------------|
| Swing Speed | 11.5 rpm |
| Swing Torque | 30.9 kN·m 22,790 lbf-ft |

Service Refill Capacities

| | | |
|-----------------------------------|--------|----------|
| Fuel Tank Capacity | 178 L | 47.0 gal |
| Cooling System | 28 L | 7.40 gal |
| Engine Oil (with filter) | 13.5 L | 3.6 gal |
| Swing Drive (each) | 2.4 L | 0.6 gal |
| Final Drive (each) | 3 L | 0.8 gal |
| Hydraulic System (including tank) | 160 L | 42.3 gal |
| Hydraulic Tank | 84 L | 22.2 gal |

Track

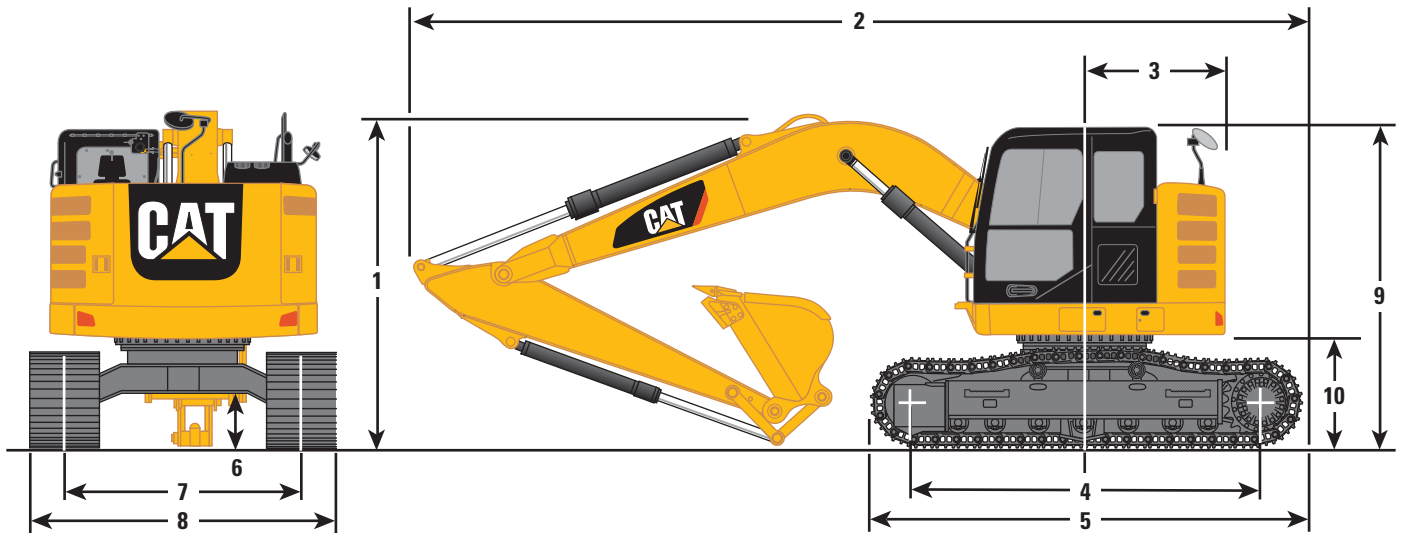
| | |
|---------------------------------------|-----------|
| Long Undercarriage | |
| Number of Shoes (each side) | 46 pieces |
| Number of Track Rollers (each side) | 7 pieces |
| Number of Carrier Rollers (each side) | 2 pieces |

Sound Performance

| | |
|-------------------------|-----------|
| ISO 6396 | |
| Operator Noise (Closed) | 69 dB(A) |
| ISO 6395 | |
| Spectator Noise | 100 dB(A) |

Dimensions

All dimensions are approximate.



| Stick | Reach Boom 4.65 m (15'3") | | | | Power Offset Boom | | | |
|--------------------------------------|------------------------------|-------|------------------|-------|-------------------|-------|-------------------|--------|
| | R3.0 m (9'10") | | R2.8 m (9'2") | | R2.5 m (8'2") | | 2.13 m (6'11") | |
| 1 Shipping Height* | 3000 mm | 9'10" | 3030 mm | 9'11" | 3000 mm | 9'10" | 3000 mm | 9'10" |
| Shipping Height at Boom Top | 2750 mm | 9'0" | 3030 mm | 9'11" | 2820 mm | 9'3" | 2780 mm | 9'1" |
| Shipping Height with Guard Rail | 3000 mm | 9'10" | 3000 mm | 9'10" | 3000 mm | 9'10" | 3000 mm | 9'10" |
| Shipping Height with Top Guard | 2950 mm | 9'8" | 2950 mm | 9'8" | 2950 mm | 9'8" | 2950 mm | 9'8" |
| 2 Shipping Length | | | | | | | | |
| Long Undercarriage | 7450 mm | 24'5" | 7440 mm | 24'5" | 7450 mm | 24'5" | 7560 mm | 24'10" |
| Long Undercarriage with Blade | 8010 mm | 26'3" | 8010 mm | 26'3" | 8010 mm | 26'3" | 8120 mm | 26'8" |
| 3 Tail Swing Radius | | | | | | | | |
| Standard Counterweight | 1490 mm | 4'11" | 1490 mm | 4'11" | 1490 mm | 4'11" | 1490 mm | 4'11" |
| Heavy Counterweight | 1530 mm | 5'0" | 1530 mm | 5'0" | 1530 mm | 5'0" | 1530 mm | 5'0" |
| 4 Length to Center of Rollers | 3040 mm | 10'0" | 3040 mm | 10'0" | 3040 mm | 10'0" | 3040 mm | 10'0" |
| 5 Track Length | 3750 mm | 12'4" | 3750 mm | 12'4" | 3750 mm | 12'4" | 3750 mm | 12'4" |
| 6 Ground Clearance | 440 mm | 1'5" | 440 mm | 1'5" | 440 mm | 1'5" | 440 mm | 1'5" |
| 7 Track Gauge | 1990 mm | 6'6" | 1990 mm | 6'6" | 1990 mm | 6'6" | 1990 mm | 6'6" |
| 8 Transport Width | | | | | | | | |
| 500 mm (20") Shoes | 2490 mm | 8'2" | 2490 mm | 8'2" | 2490 mm | 8'2" | 2490 mm | 8'2" |
| 600 mm (24") Shoes | 2590 mm | 8'6" | 2590 mm | 8'6" | 2590 mm | 8'6" | 2590 mm | 8'6" |
| 700 mm (28") Shoes | 2690 mm | 8'10" | 2690 mm | 8'10" | 2690 mm | 8'10" | 2690 mm | 8'10" |
| 9 Cab Height | 2810 mm | 9'3" | 2810 mm | 9'3" | 2810 mm | 9'3" | 2810 mm | 9'3" |
| Cab Height with Top Guard | 2950 mm | 9'8" | 2950 mm | 9'8" | 2950 mm | 9'8" | 2950 mm | 9'8" |
| 10 Counterweight Clearance** | 860 mm | 2'10" | 860 mm | 2'10" | 860 mm | 2'10" | 860 mm | 2'10" |

*Including shoe lug height.

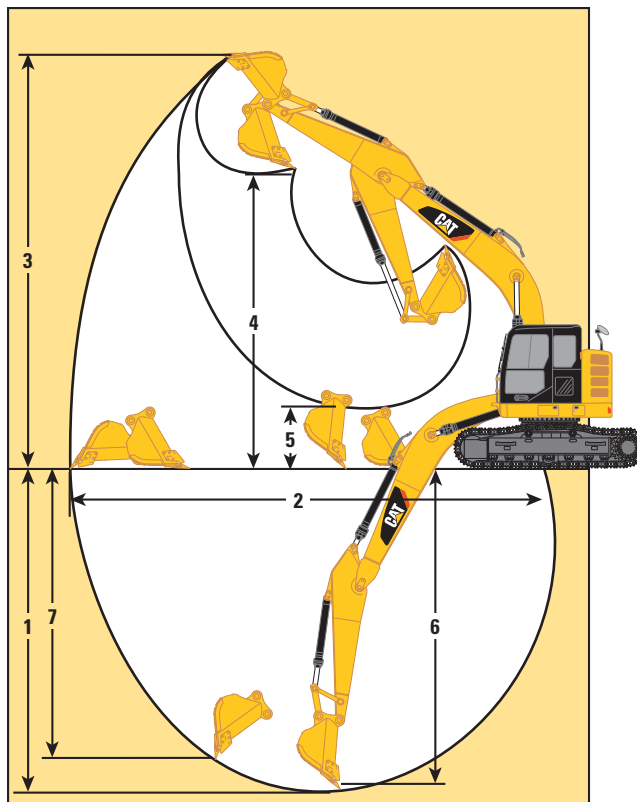
**Without shoe lug height.

All dimensions were calculated with 900 mm (35") wide GD bucket with 0.53 m³ (0.69 yd³) capacity and 1200 mm (3'11") tip radius.

314E CR Hydraulic Excavator Specifications

Working Ranges

All dimensions are approximate.

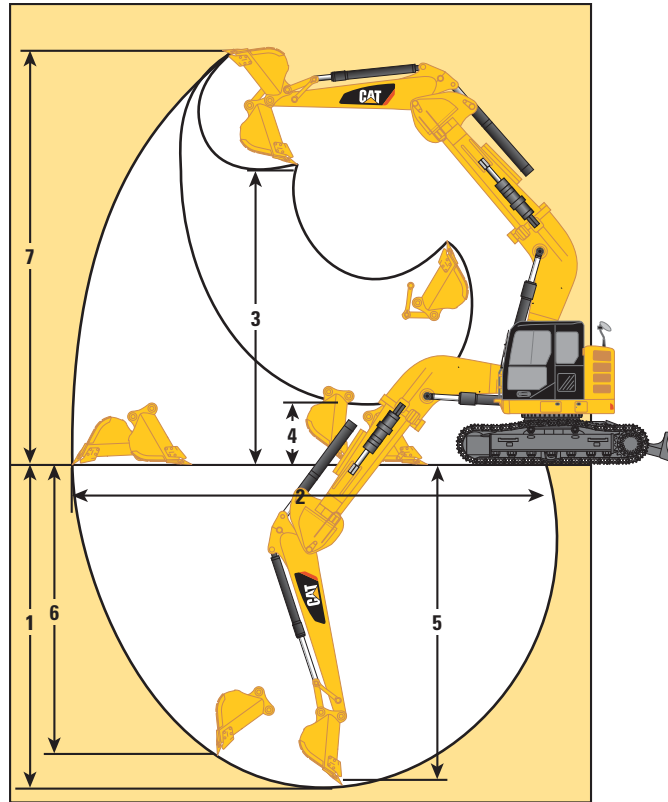


| Stick | Reach Boom 4.65 m (15'3") | | | | | |
|---|------------------------------|-------|------------------|--------|------------------|--------|
| | R3.0 m (9'10") | | R2.8 m (9'2") | | R2.5 m (8'2") | |
| 1 Maximum Digging Depth | 5950 mm | 19'6" | 5750 mm | 18'10" | 5450 mm | 17'11" |
| 2 Maximum Reach at Ground Level | 8680 mm | 28'6" | 8490 mm | 27'10" | 8230 mm | 27'0" |
| 3 Maximum Cutting Height | 9640 mm | 31'8" | 9480 mm | 31'1" | 9310 mm | 30'7" |
| 4 Maximum Loading Height | 7190 mm | 23'7" | 7030 mm | 23'1" | 6860 mm | 22'6" |
| 5 Minimum Loading Height | 2060 mm | 6'9" | 2240 mm | 7'4" | 2500 mm | 8'2" |
| 6 Maximum Depth Cut for 2440 mm (8'0") Level Bottom | 5660 mm | 18'7" | 5460 mm | 17'11" | 5160 mm | 16'11" |
| 7 Maximum Vertical Wall Digging Depth | 5280 mm | 17'4" | 5090 mm | 16'8" | 4880 mm | 16'0" |

All dimensions were calculated with 900 mm (35") wide GD bucket with 0.53 m³ (0.69 yd³) capacity and 1200 mm (3'11") tip radius.

Working Ranges

All dimensions are approximate.



| Stick | Power Offset Boom | | | | | |
|---|--------------------|--------|-------------------|--------|---------------------|-------|
| | 2.13 m (6'11")* | | 2.13 m (6'11") | | 2.13 m (6'11")** | |
| 1 Maximum Digging Depth | 4510 mm | 14'10" | 4840 mm | 15'11" | 4480 mm | 14'8" |
| 2 Maximum Reach at Ground Level | 6890 mm | 22'7" | 7270 mm | 23'10" | 6850 mm | 22'6" |
| 3 Maximum Cutting Height | 8110 mm | 26'7" | 8450 mm | 27'9" | 8070 mm | 26'7" |
| 4 Maximum Loading Height | 5680 mm | 18'8" | 6020 mm | 19'9" | 5640 mm | 18'6" |
| 5 Minimum Loading Height | 2330 mm | 7'8" | 2680 mm | 8'10" | 2290 mm | 7'6" |
| 6 Maximum Depth Cut for 2440 mm (8'0") Level Bottom | 4110 mm | 13'6" | 4450 mm | 14'7" | 4080 mm | 13'5" |
| 7 Maximum Vertical Wall Digging Depth | 3270 mm | 10'9" | 3550 mm | 11'8" | 3240 mm | 10'8" |

*Left side 1100 mm (3'7") offset position

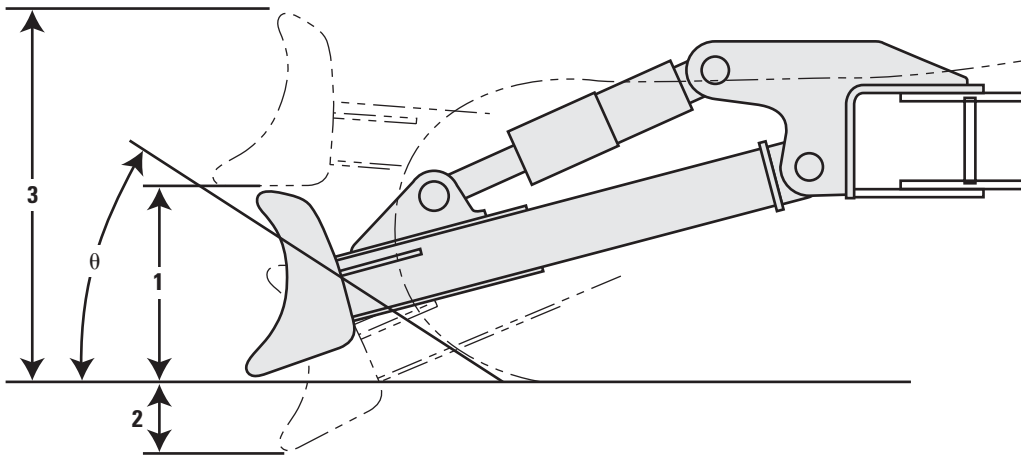
**Right side 1150 mm (3'9") offset position

All dimensions were calculated with 900 mm (35") wide GD bucket with 0.53 m³ (0.69 yd³) capacity and 1200 mm (3'11") tip radius.

314E CR Hydraulic Excavator Specifications

Blade Working Ranges

All dimensions are approximate.



| Blade Options | 2500 mm (8'2") | | 2600 mm (8'6") | | 2700 mm (8'10") | |
|--|-------------------|-------|-------------------|-------|--------------------|-------|
| Recommended Track Shoe Width | 500 mm (20") | | 600 mm (24") | | 700 mm (28") | |
| 1 Blade Height | 630 mm | 2'1" | 630 mm | 2'1" | 630 mm | 2'1" |
| 2 Maximum Lowering Depth from Ground | 570 mm | 1'10" | 570 mm | 1'10" | 570 mm | 1'10" |
| 3 Maximum Raising Height above Ground | 1000 mm | 3'3" | 1000 mm | 3'3" | 1000 mm | 3'3" |
| θ Approach Angle | 24.9 degrees | | 24.9 degrees | | 24.9 degrees | |

Major Component Weights

| | | |
|---|---------|-----------|
| Base Machine (with boom cylinder, without counterweight, front linkage and track) | 5040 kg | 11,110 lb |
| Long Undercarriage | 2660 kg | 5,870 lb |
| Counterweight | | |
| Standard – 3.06 mt (3.4 t) | 3060 kg | 6,750 lb |
| Heavy – 3.56 mt (3.9 t) | 3560 kg | 7,850 lb |
| Boom (includes lines, pins and stick cylinder) | | |
| Reach Boom – 4.65 m (15'3") | 1040 kg | 2,290 lb |
| Power Offset Boom | 1730 kg | 3,810 lb |
| Reach Boom for CGC – 4.65 m (15'3") | 1050 kg | 2,320 lb |
| Stick (includes lines, pins, bucket cylinder and bucket linkage) | | |
| R3.0 m (9'10") | 650 kg | 1,430 lb |
| R2.8 m (9'2") | 620 kg | 1,370 lb |
| R2.5 m (8'2") | 570 kg | 1,260 lb |
| 2.13 m (6'11") for Power Offset Boom | 570 kg | 1,260 lb |
| R3.0 m (9'10") for CGC | 650 kg | 1,430 lb |
| R3.0 m (9'10") for Thumb | 700 kg | 1,540 lb |
| Track Shoe (Long/per two tracks) | | |
| 500 mm (20") Triple Grouser | 1570 kg | 3,460 lb |
| 500 mm (20") Triple Grouser with Rubber Pad | 2080 kg | 4,590 lb |
| 600 mm (24") Triple Grouser | 1820 kg | 4,010 lb |
| 700 mm (28") Triple Grouser | 2090 kg | 4,610 lb |
| Blade | | |
| 2500 mm (8'2") | 810 kg | 1,790 lb |
| 2600 mm (8'6") | 810 kg | 1,790 lb |
| 2700 mm (8'10") | 820 kg | 1,810 lb |

All weights are rounded up to nearest 10 kg and lb. Kg and lb were rounded up separately so some of the kg and lb do not match.

Base machine includes 75 kg (170 lb) operator weight, 90% fuel weight, and undercarriage with center guard.

314E CR Hydraulic Excavator Specifications

Operating Weight and Ground Pressure

| | 700 mm (28") Triple Grouser Shoes | | | | 600 mm (24") Triple Grouser Shoes | | | | 500 mm (20") Triple Grouser Shoes | | | |
|--|--------------------------------------|--------|------|------|--------------------------------------|--------|------|------|--------------------------------------|--------|------|------|
| | kg | lb | kPa | psi | kg | lb | kPa | psi | kg | lb | kPa | psi |
| Long Undercarriage without Blade, with Standard Counterweight | | | | | | | | | | | | |
| Reach Boom – 4.65 m (15'3") | | | | | | | | | | | | |
| R3.0 m (9'10") | 15 100 | 33,300 | 32.1 | 4.66 | 14 800 | 32,600 | 36.7 | 5.32 | 14 600 | 32,200 | 43.5 | 6.31 |
| R2.8 m (9'2") | 15 000 | 33,100 | 31.9 | 4.63 | 14 800 | 32,600 | 36.7 | 5.32 | 14 500 | 32,000 | 43.2 | 6.27 |
| R2.5 m (8'2") | 15 000 | 33,100 | 31.9 | 4.63 | 14 700 | 32,400 | 36.5 | 5.32 | 14 500 | 32,000 | 43.2 | 6.27 |
| Long Undercarriage with Blade, with Standard Counterweight | | | | | | | | | | | | |
| Reach Boom – 4.65 m (15'3") | | | | | | | | | | | | |
| R3.0 m (9'10") | 15 900 | 35,000 | 33.8 | 4.90 | 15 600 | 34,400 | 38.7 | 5.61 | 15 400 | 34,000 | 45.9 | 6.66 |
| R2.8 m (9'2") | 15 900 | 35,000 | 33.8 | 4.90 | 15 600 | 34,400 | 38.7 | 5.61 | 15 300 | 33,700 | 45.6 | 6.61 |
| R2.5 m (8'2") | 15 800 | 34,800 | 33.6 | 4.87 | 15 600 | 34,400 | 38.7 | 5.61 | 15 300 | 33,700 | 45.6 | 6.61 |
| Power Offset Boom | | | | | | | | | | | | |
| 2.13 m (6'11") | 16 500 | 36,400 | 35.1 | 5.09 | 16 200 | 35,700 | 40.2 | 5.83 | 15 900 | 35,000 | 47.4 | 6.87 |
| Long Undercarriage without Blade, with Heavy Counterweight | | | | | | | | | | | | |
| Reach Boom – 4.65 m (15'3") | | | | | | | | | | | | |
| R3.0 m (9'10") | 15 600 | 34,400 | 33.2 | 4.82 | 15 300 | 33,700 | 38.0 | 5.51 | 15 100 | 33,300 | 45.0 | 6.53 |
| R2.8 m (9'2") | 15 500 | 34,200 | 33.0 | 4.79 | 15 300 | 33,700 | 38.0 | 5.51 | 15 000 | 33,100 | 44.7 | 6.48 |
| R2.5 m (8'2") | 15 500 | 34,200 | 33.0 | 4.79 | 15 200 | 33,500 | 37.7 | 5.47 | 15 000 | 33,100 | 44.7 | 6.48 |
| Long Undercarriage with Blade, with Heavy Counterweight | | | | | | | | | | | | |
| Reach Boom – 4.65 m (15'3") | | | | | | | | | | | | |
| R3.0 m (9'10") | 16 400 | 36,200 | 34.9 | 5.06 | 16 100 | 35,500 | 40.0 | 5.80 | 15 900 | 35,100 | 47.4 | 6.87 |
| R2.8 m (9'2") | 16 400 | 36,200 | 34.9 | 5.06 | 16 100 | 35,500 | 40.0 | 5.80 | 15 800 | 34,800 | 47.1 | 6.83 |
| R2.5 m (8'2") | 16 300 | 35,900 | 34.7 | 5.03 | 16 100 | 35,500 | 40.0 | 5.80 | 15 800 | 34,800 | 47.1 | 6.83 |
| Power Offset Boom | | | | | | | | | | | | |
| 2.13 m (6'11") | 17 000 | 37,500 | 36.2 | 5.25 | 16 700 | 36,800 | 41.4 | 6.00 | 16 400 | 36,200 | 48.8 | 7.08 |

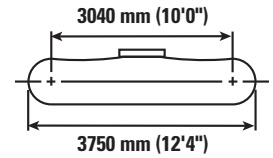
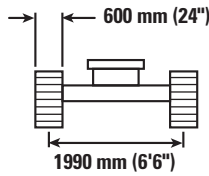
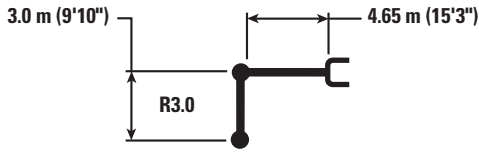
Bucket and Stick Forces

| Stick | Reach Boom 4.65 m (15'3") | | | | Power Offset Boom | | | |
|----------------------------|------------------------------|------------|---------------|------------|-------------------|------------|----------------|------------|
| | R3.0 m (9'10") | | R2.8 m (9'2") | | R2.5 m (8'2") | | 2.13 m (6'11") | |
| General Duty | | | | | | | | |
| Bucket Digging Force (SAE) | 85 kN | 19,200 lbf | 85 kN | 19,200 lbf | 85 kN | 19,200 lbf | 78 kN | 17,500 lbf |
| Stick Digging Force (SAE) | 57 kN | 12,800 lbf | 60 kN | 13,500 lbf | 64 kN | 14,300 lbf | 61 kN | 13,700 lbf |
| Severe Duty | | | | | | | | |
| Bucket Digging Force (SAE) | 84 kN | 18,800 lbf | 83 kN | 18,700 lbf | 83 kN | 18,700 lbf | 77 kN | 17,200 lbf |
| Stick Digging Force (SAE) | 57 kN | 12,800 lbf | 60 kN | 13,400 lbf | 63 kN | 14,200 lbf | 61 kN | 13,700 lbf |

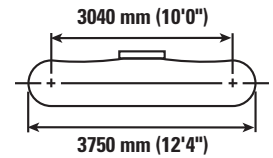
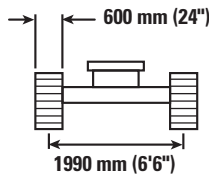
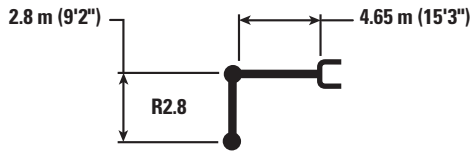
Caterpillar recommends using appropriate work tools to maximize the value customers receive from our products. Use of work tools, including buckets, which are outside of Caterpillar's recommendations or specifications for weight, dimensions, flows, pressures, etc. may result in less-than-optimal performance, including but not limited to reductions in production, stability, reliability, and component durability. Improper use of a work tool resulting in sweeping, prying, twisting and/or catching of heavy loads will reduce the life of the boom and stick.

314E CR Hydraulic Excavator Specifications

Reach Boom Lift Capacities – Standard Counterweight: 3.06 mt (3.4 t) – Blade Down



| | | 1.5 m/5.0 ft | | 3.0 m/10.0 ft | | 4.5 m/15.0 ft | | 6.0 m/20.0 ft | | 7.5 m/25.0 ft | | m ft | | |
|--------------------|----------|------------------|------------------|------------------|------------------|------------------|-----------------|-----------------|---------------|---------------|--|-----------------|-----------------|---------------|
| | | | | | | | | | | | | | | |
| 7.5 m 25.0 ft | kg lb | | | | | *2600 *2600 | | | | | | *2500 *5,600 | *2500 *5,600 | 4.54 14.33 |
| 6.0 m 20.0 ft | kg lb | | | | | *3450 *7,550 | | *2350 *2350 | | | | *2100 *4,650 | *2100 *4,650 | 6.07 19.68 |
| 4.5 m 15.0 ft | kg lb | | | | | *3700 *8,050 | *3700 *8,050 | *3400 *7,400 | 2850 6,100 | | | *2000 *4,350 | *2000 *4,350 | 6.96 22.72 |
| 3.0 m 10.0 ft | kg lb | | | *5900 *12,700 | *5900 *12,700 | *4350 *9,450 | 4300 9,200 | *3650 *7,900 | 2750 5,900 | | | *2000 *4,350 | 1950 4,300 | 7.43 24.36 |
| 1.5 m 5.0 ft | kg lb | | | *8050 *17,350 | 7400 15,900 | *5150 *11,150 | 4000 8,600 | *3950 *8,550 | 2650 5,650 | | | *2100 *4,550 | 1850 4,100 | 7.58 24.88 |
| 0.0 m 0.0 ft | kg lb | | | *7350 *16,950 | 6950 14,850 | *5600 *12,100 | 3800 8,150 | *4100 *8,850 | 2550 5,450 | | | *2300 *5,050 | 1900 4,150 | 7.43 24.36 |
| -1.5 m -5.0 ft | kg lb | *4550 *10,150 | *4550 *10,150 | *8050 *17,450 | 6800 14,600 | *5400 *11,700 | 3700 7,900 | *3900 *8,400 | 2500 5,350 | | | *2700 *6,000 | 2050 4,500 | 6.94 22.73 |
| -3.0 m -10.0 ft | kg lb | *7550 *16,950 | *7550 *16,950 | *6450 *13,950 | *6450 *13,950 | *4500 *9,650 | 3700 7,950 | *2950 7,950 | 2500 | | | *2850 *6,300 | 2500 5,500 | 6.04 19.71 |
| -4.5 m -15.0 ft | kg lb | | | *3550 *7,350 | *3550 *7,350 | | | | | | | *2150 *4,500 | *2150 *4,500 | 4.49 14.39 |



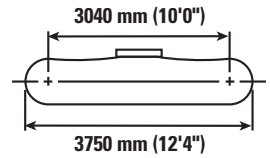
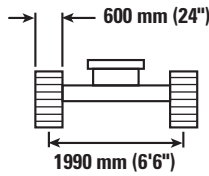
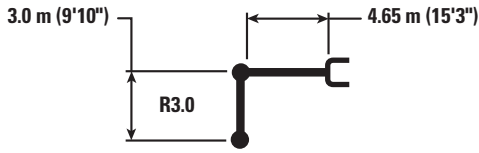
| | | 1.5 m/5.0 ft | | 3.0 m/10.0 ft | | 4.5 m/15.0 ft | | 6.0 m/20.0 ft | | 7.5 m/25.0 ft | | m ft | | |
|--------------------|----------|------------------|------------------|------------------|------------------|------------------|-----------------|-----------------|---------------|---------------|--|-----------------|-----------------|---------------|
| | | | | | | | | | | | | | | |
| 7.5 m 25.0 ft | kg lb | | | | | | | | | | | *2750 *6,250 | *2750 *6,250 | 4.21 13.20 |
| 6.0 m 20.0 ft | kg lb | | | | | *3650 *7,950 | *3650 *7,950 | | | | | *2300 *5,100 | *2300 *5,100 | 5.83 18.88 |
| 4.5 m 15.0 ft | kg lb | | | | | *3850 *8,400 | *3850 *8,400 | *3500 *7,650 | 2850 6,100 | | | *2150 *4,750 | *2150 *4,750 | 6.75 22.03 |
| 3.0 m 10.0 ft | kg lb | | | *6300 *13,450 | *6300 *13,450 | *4550 *9,800 | 4250 9,150 | *3750 *8,100 | 2750 5,900 | | | *2150 *4,750 | 2050 4,500 | 7.24 23.72 |
| 1.5 m 5.0 ft | kg lb | | | *8300 *17,900 | 7350 15,750 | *5300 *11,400 | 4000 8,600 | *4000 *8,700 | 2650 5,700 | | | *2250 *4,950 | 1950 4,250 | 7.39 24.26 |
| 0.0 m 0.0 ft | kg lb | | | *7050 *16,300 | 6950 14,900 | *5650 *12,200 | 3800 8,150 | *4150 *8,950 | 2550 5,500 | | | *2500 *5,500 | 1950 4,300 | 7.23 23.73 |
| -1.5 m -5.0 ft | kg lb | *4750 *10,600 | *4750 *10,600 | *7900 *17,100 | 6850 14,700 | *5400 *11,650 | 3700 7,950 | *3850 *8,300 | 2500 5,400 | | | *3000 *6,600 | 2150 4,750 | 6.73 22.05 |
| -3.0 m -10.0 ft | kg lb | *8100 *18,150 | *8100 *18,150 | *6200 *13,300 | *6200 *13,300 | *4350 *9,300 | 3750 8,000 | | | | | *2900 *6,350 | 2650 5,900 | 5.80 18.91 |
| -4.5 m -15.0 ft | kg lb | | | | | | | | | | | *2550 *2550 | *2550 *2550 | 3.66 |



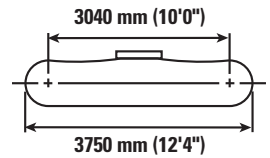
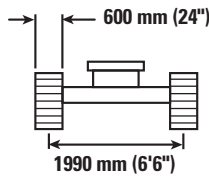
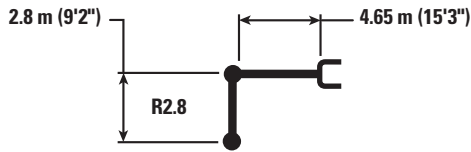
ISO 10567



Reach Boom Lift Capacities – Heavy Counterweight: 3.56 mt (3.9 t) – Blade Down



| | | 1.5 m/5.0 ft | | 3.0 m/10.0 ft | | 4.5 m/15.0 ft | | 6.0 m/20.0 ft | | 7.5 m/25.0 ft | | m ft | | |
|--------------------|----------|------------------|------------------|------------------|------------------|------------------|-----------------|-----------------|---------------|---------------|--|-----------------|-----------------|---------------|
| | | | | | | | | | | | | | | |
| 7.5 m 25.0 ft | kg lb | | | | | *2600 *2600 | | | | | | *2500 *5,600 | *2500 *5,600 | 4.54 14.33 |
| 6.0 m 20.0 ft | kg lb | | | | | *3450 *7,550 | *3450 *7,550 | *2350 *2350 | | | | *2100 *4,650 | *2100 *4,650 | 6.07 19.68 |
| 4.5 m 15.0 ft | kg lb | | | | | *3700 *8,050 | *3700 *8,050 | *3400 *7,400 | 3050 6,500 | | | *2000 *4,350 | *2000 *4,350 | 6.96 22.72 |
| 3.0 m 10.0 ft | kg lb | | | *5900 *12,700 | *5900 *12,700 | *4350 *9,450 | *4350 *9,450 | *3650 *7,900 | 2950 6,350 | | | *2000 *4,350 | *2000 *4,350 | 7.43 24.36 |
| 1.5 m 5.0 ft | kg lb | | | *8050 *17,350 | 7900 16,950 | *5150 *11,150 | 4300 9,200 | *3950 *8,550 | 2850 6,100 | | | *2100 *4,550 | 2000 4,400 | 7.58 24.88 |
| 0.0 m 0.0 ft | kg lb | | | *7350 *16,950 | *7350 15,950 | *5600 *12,100 | 4050 8,750 | *4100 *8,850 | 2750 5,850 | | | *2300 *5,050 | 2050 4,450 | 7.43 24.36 |
| -1.5 m -5.0 ft | kg lb | *4550 *10,150 | *4550 *10,150 | *8050 *17,450 | 7300 15,700 | *5400 *11,700 | 3950 8,500 | *3900 *8,400 | 2650 5,750 | | | *2700 *6,000 | 2200 4,850 | 6.94 22.73 |
| -3.0 m -10.0 ft | kg lb | *7550 *16,950 | *7550 *16,950 | *6450 *13,950 | *6450 *13,950 | *4500 *9,650 | 3950 8,550 | *2950 8,550 | 2700 | | | *2850 *6,300 | 2700 5,950 | 6.04 19.71 |
| -4.5 m -15.0 ft | kg lb | | | *3550 *7,350 | *3550 *7,350 | | | | | | | *2150 *4,500 | *2150 *4,500 | 4.49 14.39 |



| | | 1.5 m/5.0 ft | | 3.0 m/10.0 ft | | 4.5 m/15.0 ft | | 6.0 m/20.0 ft | | 7.5 m/25.0 ft | | m ft | | |
|--------------------|----------|------------------|------------------|------------------|------------------|------------------|-----------------|-----------------|---------------|---------------|--|-----------------|-----------------|---------------|
| | | | | | | | | | | | | | | |
| 7.5 m 25.0 ft | kg lb | | | | | | | | | | | *2750 *6,250 | *2750 *6,250 | 4.21 13.20 |
| 6.0 m 20.0 ft | kg lb | | | | | *3650 *7,950 | *3650 *7,950 | | | | | *2300 *5,100 | *2300 *5,100 | 5.83 18.88 |
| 4.5 m 15.0 ft | kg lb | | | | | *3850 *8,400 | *3850 *8,400 | *3500 *7,650 | 3050 6,500 | | | *2150 *4,750 | *2150 *4,750 | 6.75 22.03 |
| 3.0 m 10.0 ft | kg lb | | | *6300 *13,450 | *6300 *13,450 | *4550 *9,800 | *4550 *9,750 | *3750 *8,100 | 2950 6,350 | | | *2150 *4,750 | *2150 *4,750 | 7.24 23.72 |
| 1.5 m 5.0 ft | kg lb | | | *8300 *17,900 | 7850 16,850 | *5300 *11,400 | 4250 9,200 | *4000 *8,700 | 2850 6,100 | | | *2250 *4,950 | 2100 4,600 | 7.39 24.26 |
| 0.0 m 0.0 ft | kg lb | | | *7050 *16,300 | *7050 15,950 | *5650 *12,200 | 4050 8,750 | *4150 *8,950 | 2750 5,900 | | | *2500 *5,500 | 2150 4,650 | 7.23 23.73 |
| -1.5 m -5.0 ft | kg lb | *4750 *10,600 | *4750 *10,600 | *7900 *17,100 | 7350 15,800 | *5400 *11,650 | 4000 8,550 | *3850 *8,300 | 2700 5,800 | | | *3000 *6,600 | 2350 5,100 | 6.73 22.05 |
| -3.0 m -10.0 ft | kg lb | *8100 *18,150 | *8100 *18,150 | *6200 *13,300 | *6200 *13,300 | *4350 *9,300 | 4000 8,600 | | | | | *2900 *6,350 | 2850 6,350 | 5.80 18.91 |
| -4.5 m -15.0 ft | kg lb | | | | | | | | | | | *2550 *2550 | *2550 *2550 | 3.66 |

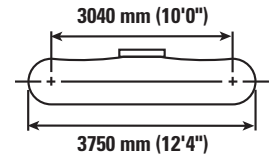
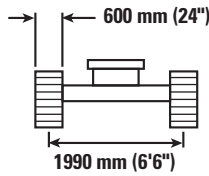
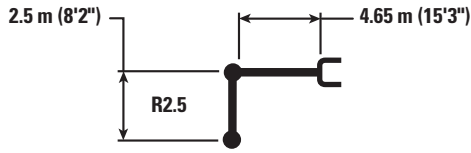


ISO 10567

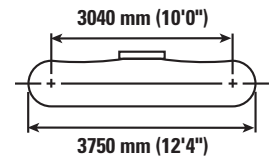
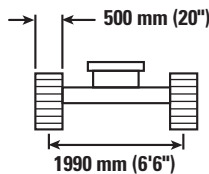
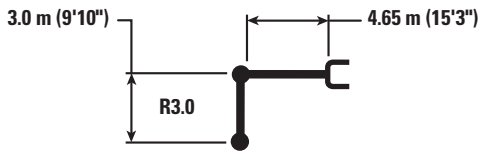


314E CR Hydraulic Excavator Specifications

Reach Boom Lift Capacities – Heavy Counterweight: 3.56 mt (3.9 t) – Blade Down



| | | 1.5 m/5.0 ft | | 3.0 m/10.0 ft | | 4.5 m/15.0 ft | | 6.0 m/20.0 ft | | 7.5 m/25.0 ft | | m ft | | |
|--------------------|----------|------------------|------------------|------------------|------------------|------------------|-----------------|-----------------|---------------|---------------|--|-----------------|-----------------|---------------|
| | | | | | | | | | | | | | | |
| 7.5 m 25.0 ft | kg lb | | | *4450 *9,250 | *4450 *9,250 | | | | | | | *3050 *6,900 | *3050 *6,900 | 3.74 11.57 |
| 6.0 m 20.0 ft | kg lb | | | | | *3900 *8,550 | *3900 *8,550 | | | | | *2400 *5,350 | *2400 *5,350 | 5.51 17.79 |
| 4.5 m 15.0 ft | kg lb | | | *4550 *9,950 | *4550 *9,950 | *4100 *8,900 | *4100 *8,900 | *3700 *7,750 | 3000 6,450 | | | *2250 *4,950 | *2250 *4,950 | 6.47 21.11 |
| 3.0 m 10.0 ft | kg lb | | | *6800 *14,550 | *6800 *14,550 | *4750 *10,250 | 4500 9,700 | *3850 *8,400 | 2950 6,300 | | | *2250 *4,900 | *2250 *4,900 | 6.98 22.87 |
| 1.5 m 5.0 ft | kg lb | | | *7250 *17,650 | *7250 16,650 | *5450 *11,750 | 4250 9,150 | *4100 *8,900 | 2850 6,100 | | | *2350 *5,150 | 2200 4,850 | 7.14 23.43 |
| 0.0 m 0.0 ft | kg lb | | | *6550 *15,100 | *6550 *15,100 | *5700 *12,300 | 4100 8,750 | *4150 *8,950 | 2750 5,900 | | | *2600 *5,700 | 2250 4,950 | 6.97 22.88 |
| -1.5 m -5.0 ft | kg lb | *4950 *11,100 | *4950 *11,100 | *7600 *16,500 | 7400 15,900 | *5300 *11,400 | 4000 8,650 | *3750 *8,000 | 2750 5,850 | | | *3150 *6,900 | 2500 5,450 | 6.45 21.13 |
| -3.0 m -10.0 ft | kg lb | *7600 *16,350 | *7600 *16,350 | *5700 *12,250 | *5700 *12,250 | *4050 *8,600 | *4050 *8,600 | | | | | *2900 *6,300 | *2900 *6,300 | 5.47 17.83 |



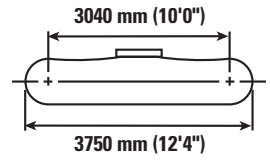
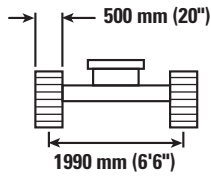
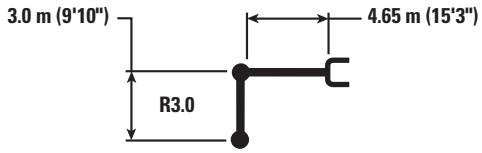
| | | 1.5 m/5.0 ft | | 3.0 m/10.0 ft | | 4.5 m/15.0 ft | | 6.0 m/20.0 ft | | 7.5 m/25.0 ft | | m ft | | |
|--------------------|----------|------------------|------------------|------------------|------------------|------------------|-----------------|-----------------|----------------|---------------|--|-----------------|-----------------|---------------|
| | | | | | | | | | | | | | | |
| 7.5 m 25.0 ft | kg lb | | | | | *2600 *2600 | *2600 *2600 | | | | | *2500 *5,600 | *2500 *5,600 | 4.54 14.33 |
| 6.0 m 20.0 ft | kg lb | | | | | *3450 *7,550 | *3450 *7,550 | *2350 *2350 | *2350 *2350 | | | *2100 *4,650 | *2100 *4,650 | 6.07 19.68 |
| 4.5 m 15.0 ft | kg lb | | | | | *3700 *8,050 | *3700 *8,050 | *3400 *7,400 | 2950 6,300 | | | *2000 *4,350 | *2000 *4,350 | 6.96 22.72 |
| 3.0 m 10.0 ft | kg lb | | | *5900 *12,700 | *5900 *12,700 | *4350 *9,450 | *4350 *9,450 | *3650 *7,900 | 2850 6,100 | | | *2000 *4,350 | *2000 *4,350 | 7.43 24.36 |
| 1.5 m 5.0 ft | kg lb | | | *8050 *17,350 | 7550 16,250 | *5150 *11,150 | 4100 8,850 | *3950 *8,550 | 2750 5,850 | *2500 1950 | | *2100 *4,550 | 1950 4,250 | 7.58 24.88 |
| 0.0 m 0.0 ft | kg lb | | | *7350 *16,950 | 7100 15,250 | *5600 *12,100 | 3900 8,400 | *4100 *8,850 | 2600 5,650 | | | *2300 *5,050 | 1950 4,300 | 7.43 24.36 |
| -1.5 m -5.0 ft | kg lb | *4550 *10,150 | *4550 *10,150 | *8050 *17,450 | 7000 15,000 | *5400 *11,700 | 3800 8,150 | *3900 *8,400 | 2550 5,500 | | | *2700 *6,000 | 2100 4,650 | 6.94 22.73 |
| -3.0 m -10.0 ft | kg lb | *7550 *16,950 | *7550 *16,950 | *6450 *13,950 | *6450 *13,950 | *4500 *9,650 | 3800 8,200 | *2950 8,200 | 2600 8,200 | | | *2850 *6,300 | 2550 5,700 | 6.04 19.71 |
| -4.5 m -15.0 ft | kg lb | | | *3550 *7,350 | *3550 *7,350 | | | | | | | *2150 *4,500 | *2150 *4,500 | 4.49 14.39 |



ISO 10567



Reach Boom Lift Capacities – Heavy Counterweight: 3.56 mt (3.9 t) – Blade Down with Rubber Pad



| | | 1.5 m/5.0 ft | | 3.0 m/10.0 ft | | 4.5 m/15.0 ft | | 6.0 m/20.0 ft | | 7.5 m/25.0 ft | | | | |
|--------------------|----------|------------------|------------------|------------------|------------------|------------------|-----------------|-----------------|---------------|---------------|--|-----------------|-----------------|---------------|
| | | | | | | | | | | | | | | |
| 7.5 m 25.0 ft | kg lb | | | | | *2600 *2600 | | | | | | *2500 *5,600 | *2500 *5,600 | 4.54 14.33 |
| 6.0 m 20.0 ft | kg lb | | | | | *3450 *7,550 | | *2350 *2350 | | | | *2100 *4,650 | *2100 *4,650 | 6.07 19.68 |
| 4.5 m 15.0 ft | kg lb | | | | | *3700 *8,050 | *3700 *8,050 | *3400 *7,400 | 3000 6,500 | | | *2000 *4,350 | *2000 *4,350 | 6.96 22.72 |
| 3.0 m 10.0 ft | kg lb | | | *5900 *12,700 | *5900 *12,700 | *4350 *9,450 | *4350 *9,450 | *3650 *7,900 | 2950 6,300 | | | *2000 *4,350 | *2000 *4,350 | 7.43 24.36 |
| 1.5 m 5.0 ft | kg lb | | | *8050 *17,350 | 7800 16,750 | *5150 *11,150 | 4250 9,150 | *3950 *8,550 | 2800 6,050 | *2500 2050 | | *2100 *4,550 | 2000 4,400 | 7.58 24.88 |
| 0.0 m 0.0 ft | kg lb | | | *7350 *16,950 | *7350 15,750 | *5600 *12,100 | 4050 8,650 | *4100 *8,850 | 2700 5,800 | | | *2300 *5,050 | 2000 4,450 | 7.43 24.36 |
| -1.5 m -5.0 ft | kg lb | *4550 *10,150 | *4550 *10,150 | *8050 *17,450 | 7250 15,500 | *5400 *11,700 | 3950 8,450 | *3900 *8,400 | 2650 5,700 | | | *2700 *6,000 | 2200 4,850 | 6.94 22.73 |
| -3.0 m -10.0 ft | kg lb | *7550 *16,950 | *7550 *16,950 | *6450 *13,950 | *6450 *13,950 | *4500 *9,650 | 3950 8,450 | *2950 8,450 | 2700 | | | *2850 *6,300 | 2650 5,900 | 6.04 19.71 |
| -4.5 m -15.0 ft | kg lb | | | *3550 *7,350 | *3550 *7,350 | | | | | | | *2150 *4,500 | *2150 *4,500 | 4.49 14.39 |



ISO 10567



314E CR Hydraulic Excavator Specifications

Work Tool Offering Guide*

| Boom Type | Reach Boom | | |
|-----------------------------------|-----------------------|----------------------|----------------------|
| Stick Size | R3.0 m (9'10") | R2.8 m (9'2") | R2.5 m (8'2") |
| Hydraulic Hammer | H110Es H115Es | H110Es H115Es | H110Es H115Es |
| Mobile Scrap and Demolition Shear | S320B** | S320B** | S320B** |
| Compactor (Vibratory Plate) | CVP75 | CVP75 | CVP75 |
| Contractors' Grapple | G112B | G112B | G112B |
| Trash Grapple | | | |
| Thumbs | | | |
| Rakes | | | |
| Center-Lock Pin Grabber Coupler | | | |

These work tools are available for the 314E CR.
Consult your Cat dealer for proper match.

*Matches are dependent on excavator configurations. Consult your Cat dealer for proper work tool match.

**Boom Mount.

Bucket Specifications and Compatibility

| | Width | | Capacity | | Weight | | Fill | Reach Booms | | | | POB** |
|--|-------|----|----------------|-----------------|--------|-------|------|-------------|-------------------|------------------|------------------|-------|
| | mm | in | m ³ | yd ³ | kg | lb | | % | R3.0 m (9'10") | R2.8 m (9'2") | R2.5 m (8'2") | |
| Without Quick Coupler | | | | | | | | | | | | |
| General Duty (GD) | 450 | 18 | 0.20 | 0.27 | 276 | 608 | 100 | ● | ● | ● | ● | ● |
| | 600 | 24 | 0.31 | 0.40 | 326 | 719 | 100 | ● | ● | ● | ● | ● |
| | 750 | 30 | 0.41 | 0.54 | 374 | 823 | 100 | ● | ● | ● | ● | ● |
| | 900 | 36 | 0.53 | 0.69 | 423 | 932 | 100 | ● | ● | ● | ● | ● |
| | 1050 | 42 | 0.65 | 0.84 | 469 | 1,034 | 100 | ⊙ | ⊙ | ● | ⊖ | x |
| | 1200 | 48 | 0.76 | 1.00 | 510 | 1,125 | 100 | x | x | x | x | x |
| Severe Duty (SD) | 600 | 24 | 0.31 | 0.40 | 367 | 810 | 90 | ● | ● | ● | ● | ● |
| | 750 | 30 | 0.41 | 0.54 | 425 | 936 | 90 | ● | ● | ● | ● | ● |
| | 900 | 36 | 0.53 | 0.69 | 483 | 1,065 | 90 | ● | ● | ● | ● | ● |
| | 1050 | 42 | 0.65 | 0.84 | 529 | 1,166 | 90 | ⊙ | ● | ● | ⊖ | x |
| Maximum load pin-on (payload + bucket) | | | | | | | kg | 1605 | 1690 | 1815 | 1555 | 2275 |
| | | | | | | | lb | 3,537 | 3,725 | 4,000 | 3,427 | 5,014 |

| | Width | | Capacity | | Weight | | Fill | Reach Booms | | | | POB** |
|--|-------|----|----------------|-----------------|--------|-------|------|-------------|-------------------|------------------|------------------|-------|
| | mm | in | m ³ | yd ³ | kg | lb | | % | R3.0 m (9'10") | R2.8 m (9'2") | R2.5 m (8'2") | |
| With Center-Lock Quick Coupler | | | | | | | | | | | | |
| General Duty (GD) | 450 | 18 | 0.20 | 0.27 | 276 | 608 | 100 | ● | ● | ● | ● | ● |
| | 600 | 24 | 0.31 | 0.40 | 326 | 719 | 100 | ● | ● | ● | ● | ● |
| | 750 | 30 | 0.41 | 0.54 | 374 | 823 | 100 | ● | ● | ● | ● | ● |
| | 900 | 36 | 0.53 | 0.69 | 423 | 932 | 100 | ⊙ | ⊙ | ● | ⊖ | ● |
| | 1050 | 42 | 0.65 | 0.84 | 469 | 1,034 | 100 | ○ | ⊖ | ⊖ | ○ | ● |
| | 1200 | 48 | 0.76 | 1.00 | 510 | 1,125 | 100 | ◇ | ○ | ○ | ◇ | ⊙ |
| Severe Duty (SD) | 600 | 24 | 0.31 | 0.40 | 367 | 810 | 90 | ● | ● | ● | ● | ● |
| | 750 | 30 | 0.41 | 0.54 | 425 | 936 | 90 | ● | ● | ● | ● | ● |
| | 900 | 36 | 0.53 | 0.69 | 483 | 1,065 | 90 | ⊙ | ● | ● | ○ | ● |
| | 1050 | 42 | 0.65 | 0.84 | 529 | 1,166 | 90 | ⊖ | ⊖ | ⊙ | ○ | ● |
| Maximum load with coupler (payload + bucket) | | | | | | | kg | 1359 | 1444 | 1569 | 1309 | 2029 |
| | | | | | | | lb | 2,996 | 3,183 | 3,459 | 2,885 | 4,472 |

The above loads are in compliance with hydraulic excavator standard EN474, they do not exceed 87% of hydraulic lifting capacity or 75% of tipping capacity with front linkage fully extended at ground line with bucket curled.

Capacity based on ISO 7451.

Bucket weight with Long tips.

*Densities with 3.0 m (9'10") thumb stick do not consider thumb weight.

**POB installs blade as standard configuration.

Maximum Material Density:

- 2100 kg/m³ (3,500 lb/yd³)
- ⊙ 1800 kg/m³ (3,000 lb/yd³)
- ⊖ 1500 kg/m³ (2,500 lb/yd³)
- 1200 kg/m³ (2,000 lb/yd³)
- ◇ 900 kg/m³ (1,500 lb/yd³)
- x Not recommended

Caterpillar recommends using appropriate work tools to maximize the value customers receive from our products. Use of work tools, including buckets, which are outside of Caterpillar's recommendations or specifications for weight, dimensions, flows, pressures, etc. may result in less-than-optimal performance, including but not limited to reductions in production, stability, reliability, and component durability. Improper use of a work tool resulting in sweeping, prying, twisting and/or catching of heavy loads will reduce the life of the boom and stick.

Standard Equipment

Standard equipment may vary. Consult your Cat dealer for details.

CAB

- Pressurized operator station with positive filtration
- Sliding upper door window (left-hand cab door)
- Removable lower windshield with in cab storage bracket
- Coat hook
- Beverage holder
- Literature holder
- AM/FM radio
- Radio with MP3 auxiliary audio port
- Two stereo speakers
- Storage shelf suitable for lunch or toolbox
- Color LCD display with indicators, filter/fluid change, and working hour information
- Adjustable armrest
- Height adjustable joystick consoles
- Neutral lever (lock out) for all controls
- Travel control pedals with removable hand levers
- Capability of installing additional pedal
- Power outlets, 5 amp
- Travel alarm
- Laminated glass front upper window and tempered other windows

ELECTRICAL

- 80 amp alternator
- Circuit breaker
- Capability to electrically connect a beacon

ENGINE

- C4.4 diesel engine
- Biodiesel capable
- Meets EPA Tier 4 Interim emission standards
- 2300 m (7,500 ft) altitude capability
- Electric priming pump
- Automatic engine speed control
- Economy and high power modes
- Two-speed travel
- Side-by-side cooling system
- Radial seal air filter
- Primary filter with water separator and water separator indicator
- Secondary filter
- Screen filter in fuel line
- Variable speed fan with viscous clutch

HYDRAULIC SYSTEM

- Regeneration circuit for boom and stick
- Reverse swing dampening valve
- Automatic swing parking brake
- High-performance hydraulic return filter
- Fine swing control

LIGHTS

- Halogen boom light (left side)
- Time delay function for boom light and cab light
- Exterior light

UNDERCARRIAGE

- Center track guiding guard
- Grease Lubricated Track GLT2, resin seal
- Towing eye on base frame

SECURITY

- Cat one key security system
- Door locks
- Cap locks on fuel and hydraulic tanks
- Lockable external tool/storage box
- Signaling/warning horn
- Secondary engine shutoff switch
- Rear window for emergency exit
- Guard, travel motor protection
- Guard rail
- Rearview camera-ready

Optional Equipment

Optional equipment may vary. Consult your Cat dealer for details.

CAB

- Seat, high-back air suspension with heater and cooling
- Seat, high-back air suspension with heater
- Seat, high-back mechanical suspension
- Right pedal
- Rain protector
- Cab mirror
- Ashtray

COUNTERWEIGHT

- 3.06 mt (3.4 t) without lifting eye
- 3.56 mt (3.9 t) without lifting eye

ELECTRICAL

- Cold weather battery -25° C (-13° F)
- Jump start receptacle

ENGINE

- Quick drains, engine and hydraulic oil

FRONT LINKAGE

- Quick coupler
- Bucket linkage
- 4.65 m (15'3") Reach Boom
- Power Offset Boom
- 2.13 m (6'11") stick for Power Offset Boom
- 2.5 m (8'2") stick
- 2.8 m (9'2") stick
- 3.0 m (9'10") stick
- 3.0 m (9'10") thumb-ready stick

HYDRAULIC SYSTEM

- Control pattern quick-changer, two way
- Auxiliary hydraulics
- Boom and stick lines
- High-pressure line
- Medium-pressure line
- Quick coupler line
- Boom lowering and stick lowering control device
- Cat Bio hydraulic oil

LIGHTS

- Working light, cab mounted with time delay
- HID light, cab mounted with time delay
- Halogen boom lights (right side)

UNDERCARRIAGE

- 500 mm (20") triple grouser shoes
- 600 mm (24") triple grouser shoes
- 700 mm (28") triple grouser shoes
- Rubber pad for 500 mm (20") triple grouser shoes
- 2500 mm (8'2") blade with replaceable cutting edge
- 2600 mm (8'6") blade with replaceable cutting edge
- 2700 mm (8'10") blade with replaceable cutting edge
- Swivel guard

SECURITY

- FOGS, bolt-on
- Guard, cab front, mesh
- Guard, vandalism
- Security system fitted (MSS)
- Bottom guards, heavy duty
- Rearview camera

TECHNOLOGY

- Cat Grade Control Depth and Slope
- Product Link

314E CR Hydraulic Excavator

For more complete information on Cat products, dealer services, and industry solutions, visit us on the web at www.cat.com

© 2012 Caterpillar Inc.
All rights reserved

Materials and specifications are subject to change without notice. Featured machines in photos may include additional equipment. See your Cat dealer for available options.

CAT, CATERPILLAR, SAFETY.CAT.COM, their respective logos, "Caterpillar Yellow" and the "Power Edge" trade dress, as well as corporate and product identity used herein, are trademarks of Caterpillar and may not be used without permission.

AEHQ6905 (11-2012)
(North America)

