

A46JE/A46JRT

ARTICULATED BOOM LIFTS



- Class-leading articulated boom lifts
- Choose from electric or rough terrain diesel models
- Highly maneuverable with tight turning radius
- Superb working envelope with zero tailswing
- Robust, reliable and easy to operate



snorkel™

www.snorkellifts.com

ARTICULATED BOOM LIFTS

A46JE/A46JRT

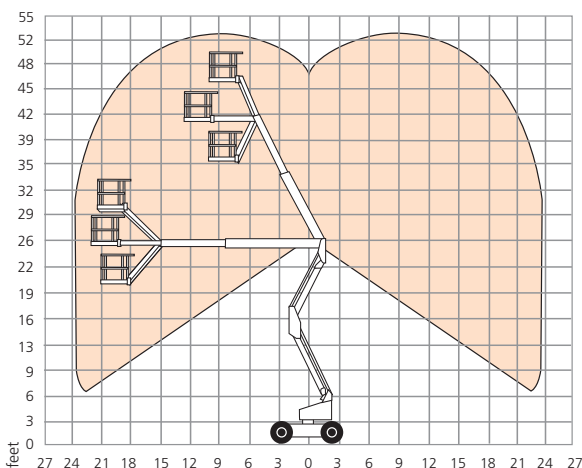
DIMENSIONS	A46JE	A46JRT
Max. working height	52 ft 3 in	52 ft 11 in
Max. platform height	46 ft 3 in	46 ft 11 in
Max. horizontal reach	24 ft 11 in	24 ft 11 in
Clearance height at max. outreach	24 ft 6 in	25 ft 2 in
Platform size	39 in x 72 in	39 in x 72 in
Chassis width (A)	5 ft 8 in	6 ft 10 in
Overall length (B)	18 ft 4 in	18 ft 8 in
Stowed height (C)	6 ft 7 in	7 ft 2 in
Ground clearance	6 in	13 in

PERFORMANCE	A46JE	A46JRT
Platform capacity (SWL)	500 lbs	500 lbs
Max. wind speed	28 mph	28 mph
Max. drive height	46 ft 3 in	46 ft 11 in
Max. drive speed (stowed)	3.2 mph	4.0 mph
Max. drive speed (elevated)	0.5 mph	0.8 mph
Jib length	5 ft	5 ft
Jib arc	140°	140°
Platform rotation	160°	160°
Superstructure rotation	360° non-continuous	360° non-continuous
Tailswing	0 in	0 in
Raise/lower time	99/92 sec	101/98 sec
Gradeability	30%	45%
Inside turning radius	2 ft	2 ft 8 in
Outside turning radius	9 ft 10 in	10 ft 5 in
Tires	non-marking, foam filled IN240/55D 17.5	foam filled lug filled 355/55D625
Controls	proportional	proportional
Drive system	2-wheel drive	4-wheel drive

POWER	A46JE	A46JRT
Power source	8 x 6V 360Ah batteries	Kubota V1505 24.9hp diesel Tier 4 Final
Battery charger	100-200V/10A	n/a

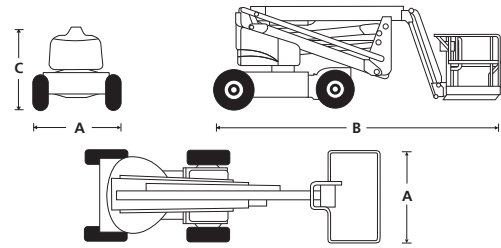
WEIGHT	A46JE	A46JRT
Weight	14,690 lbs	16,620 lbs

WORKING ENVELOPE



ANSI Specification
©Snorkel 2021

Specifications subject to change without notice. Photos and diagrams in this brochure are for promotional purposes only. Refer to appropriate Snorkel operators manual for detailed instructions on the proper use and maintenance.



STANDARD FEATURES

- Snorkel Guard™ secondary guarding system
- Multi-function proportional controls
- Zero tailswing
- Oscillating front axle (A46JRT only)
- Tri-entry platform
- Foam filled lug tires (A46JRT only)
- Non-marking tires (A46JE only)
- Power line to platform
- Hour meter & on-board diagnostics display
- Tilt alarm
- Horn
- Battery charge indicator (A46JE only)
- Drive motion alarm
- Flashing amber light
- Platform overload system
- 2 year parts & labor, 5 year structural warranty
- ANSI compliant

OPTIONS

- Special paint colors
- Airline to platform
- Non-marking tires (A46JRT only)
- Pneumatic tires (A46JRT only)
- 5' aluminum platform with swing gate
- AC generator 110V/2.5kW (A46JRT)
- Dual fuel (A46JRT)
- Aircraft package
- Deluxe aircraft package
- Cold weather package
- Extreme cold weather package (A46JRT only)
- Extreme environmental package
- Light package
- Utility package (A46JRT)
- Glazier package (A46JRT)
- Environmental hydraulic oil
- Tool tray (A46JRT)
- Pipe rack
- Personal fall arrest system (A46JRT)
- Snorkel OnSite™ telematics

snorkel

P.O. Box 1160
St. Joseph, MO 64502-1160, USA
Tel: 1 (785) 989-3000
Toll-free: 1 (800) 255-0317
Fax: 1 (785) 989-3070

Email: sales.usa@snorkellifts.com

www.snorkellifts.com