

SELF-PROPELLED TELESCOPIC BOOMS | ENGINE-POWERED

OUTSTANDING HORIZONTAL OUTREACH

Telescopic booms offer greater horizontal outreach than any other type of aerial platform — perfect for areas with limited access in construction and industrial applications. Genie® telescopic S™-booms are also designed for productivity with the traction and drive speed you need to get around the job site and to the work area. These models reach out horizontally between 31 ft 8 in (9.65 m) and 77 ft 5 in (23.60 m), with working heights of 46 ft (14.20 m) to 91 ft (27.90 m).

GREAT FOR TIGHT SPACES

The 360° continuous rotation turntable rotates full circle for quick and flexible positioning. Minimal tailswing allows you to maneuver in tight work spaces.

DUAL-FUEL ENGINE OPTIONS

Dual-fuel options are available for reliable, on-demand performance with the flexibility for indoor/outdoor applications. A switch on the control panels allows instant choice of gasoline or LPG operation.



OUTSTANDING TERRAINABILITY

A revolutionary patented system automatically senses the terrain and adjusts the axle position based on ground conditions. Positive traction drive maintains equal power to all drive wheels, even if one wheel loses traction in mud, snow or sand. And two- or four-wheel drive options make it easy to drive up loading ramps for transport.

Genie's revolutionary patented active oscillation system automatically senses the terrain and adjusts the axle position based on ground conditions.





SUPERIOR REACH AND POSITIONING

Exceptional horizontal outreach and a rotating, self-leveling platform allow precise positioning exactly where you need to work. For added flexibility, the articulating jib boom option gives you an extra 5 ft (1.52 m) of horizontal or vertical reach and 135° of working range.

INDUSTRY-LEADING CAPACITY

Increase productivity with the high-capacity S™-60 HC. Its three-person capacity platform holds 750 lbs (340 kg) at the maximum horizontal outreach of 50 ft 10 in (15.48 m) or 1,250 lbs (567 kg) up to 40 ft 8 in (12.39 m). Built-in platform load and position sensing provides automatic active envelope control and peace of mind. The Genie S™-60 and S™-80 models also offer an optional 750 lb (340 kg) capacity configuration with unrestricted outreach of 50 ft 10 in (15.48 m) on the S™-60 and 72 ft 5 in (22.07 m) on the S™-80.



MAXIMIZE PRODUCTIVITY YEAR-ROUND

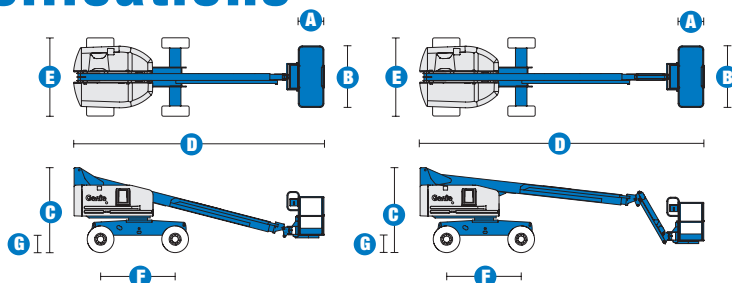
Featuring a fixed, four-point track system, the S™-60 Trax and S™-65 Trax models allow operators to maneuver in a diverse range conditions. The rubber tracks provide increased flotation and traction for traveling in mud, sand, snow, gravel, in wet or rough terrain environments, and even on sensitive outdoor surfaces. Because the new Trax models are fixed with four independent tracks, they steer like a wheeled machine to allow maneuvering close to walls and foundations. Plus, each track flexes 23° up and down for a smooth ride during operation and travel. Thanks to a machine width of 8 ft 6 in, Trax models can be transported without over-width permits.



ENGINE-POWERED MODELS AVAILABLE

- S™-40
- S™-45
- S™-60
- S™-60 TRAX
- S™-60 HC
- S™-65
- S™-65 TRAX
- S™-80
- S™-85

Specifications



MODELS	S™-40		S™-45	
MEASUREMENTS	US	Metric	US	Metric
Working height maximum*	46 ft	14.20 m	51 ft	15.72 m
Platform height maximum	40 ft	12.20 m	45 ft	13.72 m
Horizontal reach maximum	31 ft 8 in	9.65 m	36 ft 8 in	11.18 m
Below ground reach	3 ft 2 in	.97 m	4 ft 11 in	1.5 m
A Platform length - 8 ft model	3 ft	.91 m	3 ft	.91 m
Platform length - 6 ft model	2 ft 6 in	.76 m	2 ft 6 in	.76 m
B Platform width - 8 ft model	8 ft	2.44 m	8 ft	2.44 m
Platform width - 6 ft model	6 ft	1.83 m	6 ft	1.83 m
C Height - stowed	8 ft 2 in	2.49 m	8 ft 2 in	2.49 m
D Length - stowed	24 ft 3 in	7.39 m	27 ft 10 in	8.48 m
- transport (jib tucked under)	_____	_____	22 ft 4 in	6.80 m
E Width (with standard tires)	7 ft 6 in	2.30 m	7 ft 6 in	2.30 m
F Wheelbase	7 ft 3 in	2.20 m	7 ft 3 in	2.20 m
G Ground clearance - center	1 ft .5 in	.32 m	1 ft .5 in	.32 m

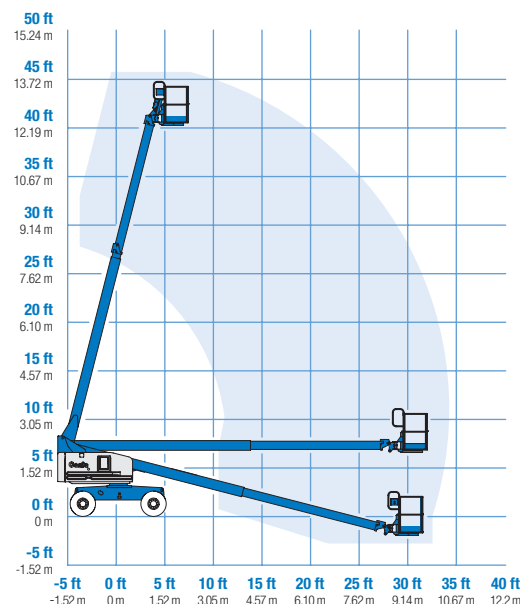
PRODUCTIVITY				
Lift capacity	500 lbs	227 kg	500 lbs	227 kg
Platform rotation	160°		160°	
Vertical jib rotation	_____		135°	
Turntable rotation	360° continuous		360° continuous	
Turntable tailswing	2 ft 10 in	.86 m	2 ft 10 in	.86 m
Drive speed - stowed	4.8 mph	7.7 km/h	4.8 mph	7.7 km/h
Drive speed - raised or extended	0.68 mph	1.1 km/h	0.68 mph	1.1 km/h
Gradeability - 2WD - stowed**	30%		30%	
Gradeability - 4WD - stowed**	40%		40%	
Turning radius - inside	6 ft 8 in	2.0 m	6 ft 8 in	2.0 m
Turning radius - outside	15 ft 8 in	4.78 m	15 ft 8 in	4.78 m
Controls	12 V DC proportional		12 V DC proportional	
Tires - RT lug	12-16.5 NHS		12-16.5 NHS	
Tires - ribbed (2WD front)	12.5 L - 16 SL		12.5 L - 16 SL	

POWER				
Power source	Ford DSG 423 4 cylinder gas/LPG 75 hp (56 kW) Deutz D2011L03i 3 cylinder diesel 46 hp (34.3 kW) Perkins 404D-22 4 cylinder diesel 51 hp (38 kW)			
Auxiliary power unit	12 V DC		12 V DC	
Hydraulic tank capacity	45 gal	170 L	45 gal	170 L
Fuel tank capacity	20 gal	76 L	20 gal	76 L

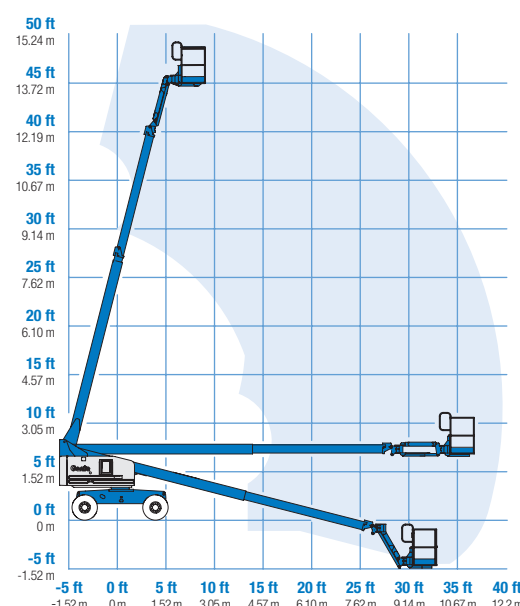
WEIGHT***				
	11,650 lbs	5,284 kg	14,790 lbs	6,709 kg

STANDARDS COMPLIANCE	
	ANSI A92.5, CSA B354.4, CE Compliance

RANGE OF MOTION S™-40



RANGE OF MOTION S™-45



* The metric equivalent of working height adds 2 m to platform height. U.S. adds 6 ft to platform height.
 ** Gradeability applies to driving on slopes. See operator's manual for details regarding slope ratings.
 *** Weight will vary depending on options and/or country standards.

Features

EASILY CONFIGURED TO MEET YOUR NEEDS

PLATFORM OPTIONS

- Steel 8 ft (2.44 m) (standard)
- Steel 6 ft (1.83 m)
- Steel 6** or 8 ft (1.83 or 2.44 m) tri-entry
- Steel 4 ft (1.22 m)**
- Steel 5 ft (1.52 m)**

JIB OPTIONS

- Non-jib
- 5 ft (1.52 m) jib boom

POWER OPTIONS

- Ford gas/LPG 75 hp (56 kW)
- Deutz diesel 46 hp (34.3 kW)
- Perkins diesel 51 hp (38 kW)

DRIVE OPTIONS

- 2WD
- 4WD

AXLE OPTIONS

- Active oscillation
- Non-oscillating

TIRE OPTIONS

- Rough terrain air-filled (standard)
- Rough terrain foam-filled
- Rough terrain non-marking air or foam-filled
- High flotation air-filled
- Sealant treated air-filled

* Available on select models

** Not available on CE machines

STANDARD FEATURES

MEASUREMENTS

S™-40

- 46 ft (14.20 m) working height
- 31 ft 8 in (9.65 m) horizontal reach
- Up to 500 lb (227 kg) lift capacity

S™-45

- 51 ft (15.72 m) working height
- 36 ft 8 in (11.18 m) horizontal reach
- Up to 500 lb (227 kg) lift capacity

PRODUCTIVITY

- Self-leveling platform
- Hydraulic platform rotation
- Fully proportional Hall effect joystick controls
- Fuel select switch on platform and ground control panels (Gas/LPG models)
- Drive enable
- AC power cord to platform
- Tilt alarm
- Descent alarm
- Horn
- Hour meter
- 360° continuous turntable rotation
- Locking, low profile turntable covers
- Positive traction drive
- Two speed wheel motors

POWER

- All engines are emissions compliant
- 12 V DC auxiliary power
- Anti-restart engine protection
- Auto engine fault shutdown
- Intake air heater (Deutz engine)



OPTIONS & ACCESSORIES

PRODUCTIVITY

- Platform swing gate
- Half-mesh platform inserts with swing gate
- Platform top auxiliary rail
- Arc Pro 275™ Heavy-Duty Welder package
- Welder Ready package
- Weld leads to platform
- Air line to platform
- Hydraulic oil cooler
- Fire resistant hydraulic oil
- Biodegradable hydraulic oil
- Basic hostile environment kit
- Deluxe hostile environment kit
- Deluxe aircraft protection package (6 ft platform only)
- Thumb rocker steer
- Tool tray
- Fluorescent tube caddy
- Pipe cradle (pair)
- Alarm package
- Panel cradle package*
- Platform work lights
- Front driving lights
- Lockable platform control box covers
- Tow package

POWER

- Engine gauge package
- AC generator packages (110V/60Hz, 3000W or 220V/50Hz, 2500W)
- Cold Weather Packages
- Arctic Packages
- Diesel scrubber/spark arrestor muffler
- Diesel spark arrestor muffler
- LPG tank 33.5 lb (15.19 kg) capacity
- Additional LPG tank with carrier
- Retained key selector switch

Working At Height Limited

(Southern Office)
Amberley Court
Old Elstead Road
Milford
Surrey
GU8 5EB

Tel: 01483 415 410
Fax: 01483 417 719

Working At Height Limited

(Northern Office)
The Portergate
Ecclesall Road
Sheffield
South Yorkshire
S11 8NX

Tel: 0114 209 6206
Fax: 0114 209 6001

Suppliers of:

Powered Access Platforms
Aerial Work Platforms
Runabout Access Platforms
Scissor Lifts
Articulating Boom Access Platforms
Telescopic Boom Access Platforms
Material Lifts
Telehandlers
MEWPS Training