

# X600AJ

COMPACT CRAWLER

BOOM LIFT



## KEY SPECS

**Platform Height**  
59-ft 3-in / 18.05-m

**Platform Capacity**  
500-lb / 227-kg

**Horizontal Outreach**  
30-ft / 9.1-m

**Overall Width**  
31-in / 0.78-m

## KEY FEATURES

- Best-in-class 500-lb unrestricted platform capacity.
- Access tight spaces and climb slopes with ease thanks to a narrow chassis and tracked wheel carriage.
- Environmentally friendly with standard AC powered boom functions, diesel or an optional lithium-ion electrical system for emission-free operation.
- Transport with ease by a forklift or crane with forklift pockets and lifting eyes, and fits through standard doorway.

## ACCESSORIES & OPTIONS

- Black Deep-Tread Tracks
- Bi-Energy Power Option - Includes Diesel Engine and Lithium-Ion Battery
- Radio Remote Control

## STANDARD SPECIFICATIONS

### Performance

Platform Height	59-ft 3-in / 18.05-m
Horizontal Outreach	30-ft / 9.1-m
Platform Capacity	500-lb / 227-kg
Swing	360 Degrees Non-continuous
Platform Rotation	124 Degrees (+62, -62 Degrees)
Jib (Range of Articulation)	89 Degrees (0, -89 Degrees)
Ground Bearing Pressure (Tracks)	9.28 psi / .66 kg/cm <sup>2</sup>
Ground Bearing Pressure (Outriggers)	44.09 psi / 3.09 kg/cm <sup>2</sup>
Max Approach / Depart Angles	20° / 21°
Drive Speed	0.8 mph / 1.3 km/h
Max Stabilization Slope	15 Degrees
Gradeability	28%
Weight* (Diesel)	6,548-lbs / 2,970-kg

\*Certain options or country standards increase weight

### Power

Diesel Engine: Kubota Z602	19.5 hp / 14.5 kW
Fuel Tank Capacity	1.5 gal / 5.9 L
AC Motor	120V AC / 60 HZ
Optional: 72V Lithium-Ion Battery	72V / 100Ah

### Tracks

Standard	Non-marking Tracks
----------	--------------------

### Hydraulic System

Capacity	10.56 gal / 40 L
----------	------------------

## STANDARD FEATURES

- 110V AC Receptacle in Platform
- Air/Water Line to Platform
- Powered Track Widening
- 360 Degree Non-Continuous Swing
- Electronic Controls with One-Touch Outrigger Deployment
- Proportional Controls
- 58 x 30-in Removable Aluminum Platform, Dual Side Entry
- Emergency Lowering Pump
- Removable Controller
- 5-ft Articulating Jib
- Flashing Amber Beacon
- SkyGuard SkyLine™
- AC Motor for Indoor Operation
- Fork Lift Pockets
- Synthetic Biodegradable Hydraulic Oil
- Lifting Eyes
- Telematics-Ready Harness
- Load Sensing System
- Non-Marking Tracks
- Tie Down Lugs

# X600AJ

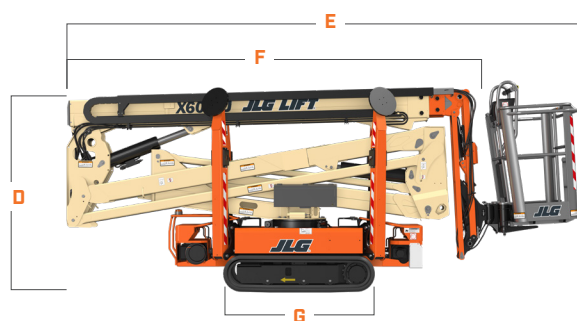
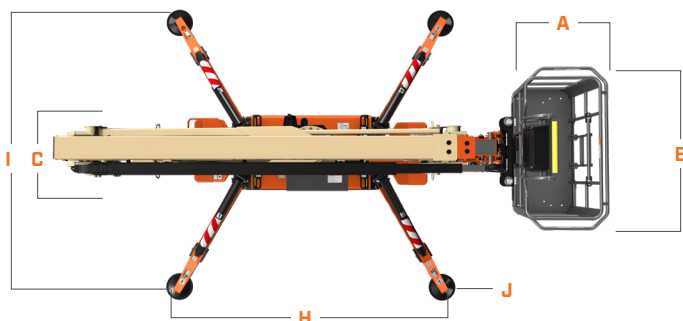
## COMPACT CRAWLER

BOOM LIFT



## DIMENSIONS

All dimensions are approximate



A. Platform Width	30-in / 76-cm
B. Platform Length	58-in / 1.47-m
C. Machine Width*	31-in / 78-cm
D. Machine Height	6-ft 6-in / 1.98-m
E. Machine Length	16-ft 5-in / 5.01-m
F. Machine Length Without Platform	15-ft 3-in / 4.65-m
G. Track length	4-ft 10-in / 1.47-m
H. Outrigger Footprint - Length	10-ft 7-in / 3.22-m
I. Outrigger Footprint - Width	10-ft 7-in / 3.23-m
J. Outrigger Pad Diameter	11.8-in / 30-cm

\*Overall Width (with platform removed - tracks retracted)

## REACH DIAGRAM

70-ft  
[21.3-m]

60-ft  
[18.2-m]

50-ft  
[15.2-m]

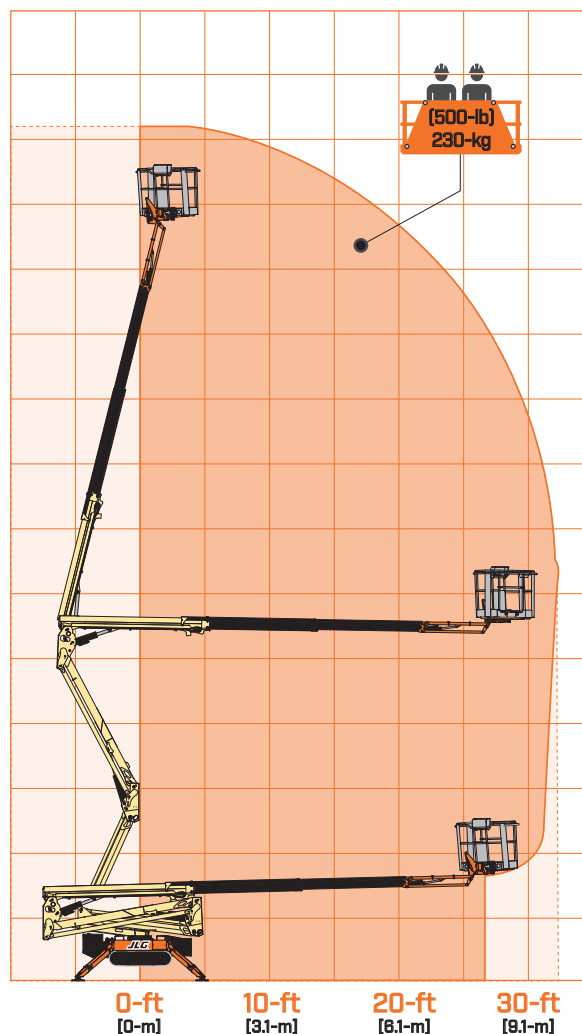
40-ft  
[12.2-m]

30-ft  
[9.1-m]

20-ft  
[6.1-m]

10-ft  
[3.1-m]

0-ft  
[0-m]



We provide coverage for one (1) full year, and cover all specified major structural components for five (5) years. Due to continuous product improvements, we reserve the right to make specification and/or equipment changes without prior notification. This machine meets or exceeds applicable ANSI and CSA requirements based on machine configuration as originally manufactured for intended applications. Please reference the serial number plate on the machine for additional information.



**JLG INDUSTRIES, INC.**  
Toll-free US 877-JLG-LIFT  
**JLG.com**

An Oshkosh Corporation Business