



BECOME A CORPORATE MEMBER

Gwobr Aur
Gold Award
2023



The National Botanic Garden of Wales is respected around the world and loved by those who visit. Our goals and achievements are inspired by our charitable mission dedicated to the research and conservation of biodiversity, to sustainability, lifelong learning and visitor enjoyment. To do this, we need more people on nature's side and more space for wildlife to thrive.

We know what needs to be done and we need your support to achieve it.

SUPPORTING THE ENVIRONMENT, LEARNING AND CONSERVATION

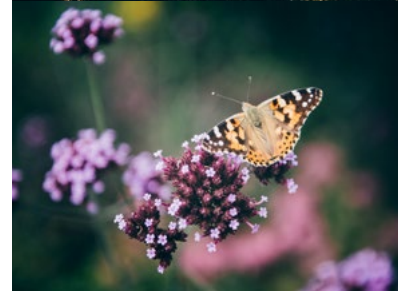
If your business wants to help local wildlife, invest in education and the local community whilst contributing to a healthier environment, you will benefit from a relationship with the National Botanic Garden of Wales.

Becoming a corporate member of the National Botanic Garden of Wales invests not only in wildlife and wild places, but your business too. It can boost your brand, help reduce colleague stress, demonstrate to stakeholders your commitment to the environment and engage new audiences and customers.

You will become part of a cohort of like-minded businesses who are helping to protect plants and restore wild places. You will also receive a range of benefits from use of our logo, to promotional opportunities in our wide reaching communications to volunteering opportunities for your staff.

Corporate Membership is a great first step in developing a lasting relationship with the National Botanic Garden of Wales. By joining us, your business will play a part in our vision for a world that values biodiversity, protects plants and the planet.

National Botanic Garden of Wales
Middleton Hall
Llanarthne
Carmarthenshire SA32 8HN
botanicgarden.wales



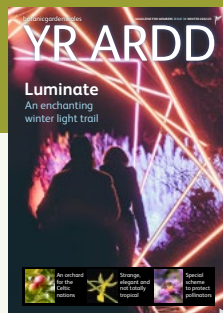
ALL CORPORATE MEMBERS RECEIVE:

- 10% discount on entry and memberships for staff
- Complimentary tickets for clients
- Discount on the hire of Garden facilities for corporate functions
- An opportunity to have an article in *YR ARDD*, our Members' magazine, as well as competitive pricing to advertise your company to our Members and visitors
- Discount on courses held by the Botanic Garden, such as beekeeping, horticulture, art and more
- Opportunities for volunteering and corporate team building days by arrangement
- Company name listed on our website, plus a link to yours
- Mention in our annual Impact Report
- Free will writing service for staff
- Receive regular updates about news and events
- Invite to corporate members day
- Discounted professional services including land management advice and biodiversity reviews

The three levels of membership are:

(fees per annum, exc. VAT)

- | | |
|---|--------|
| • Small Business: (Under 20 employees) | £ 750 |
| • Medium Business: (20-100 employees) | £1,500 |
| • Large Business: (100-200 employees) | £3,000 |
| • Business over 200 please contact us at account@gardenofwales.org.uk or call 01558 667149 | |



**Membership fees are minimum amounts, meaning that you can choose to donate more should you wish to increase your level of support. Any amount donated above the minimum is considered voluntary and therefore not subject to VAT*

PARTNERING OPPORTUNITIES FOR BUSINESS

Partnering with us will help you to:

- Reach new audiences through cause-related marketing opportunities and sponsorship
- Stand out as the leader in your industry for protecting Wales' landscapes
- Align with a credible environmental charity and iconic Welsh visitor attraction
- Engage with people across the country on important environmental issues
- Increase customer acquisition and loyalty through demonstrating your positive values
- Provide employees with ways to improve their health and well-being through volunteering and membership of the Garden.

You can make a difference now to the environment, to your employees, customers and stakeholders. Together, we can build a strong and meaningful partnership that benefits your business and our cause. Contact our team at account@gardenofwales.org.uk, we look forward to speaking with you soon.