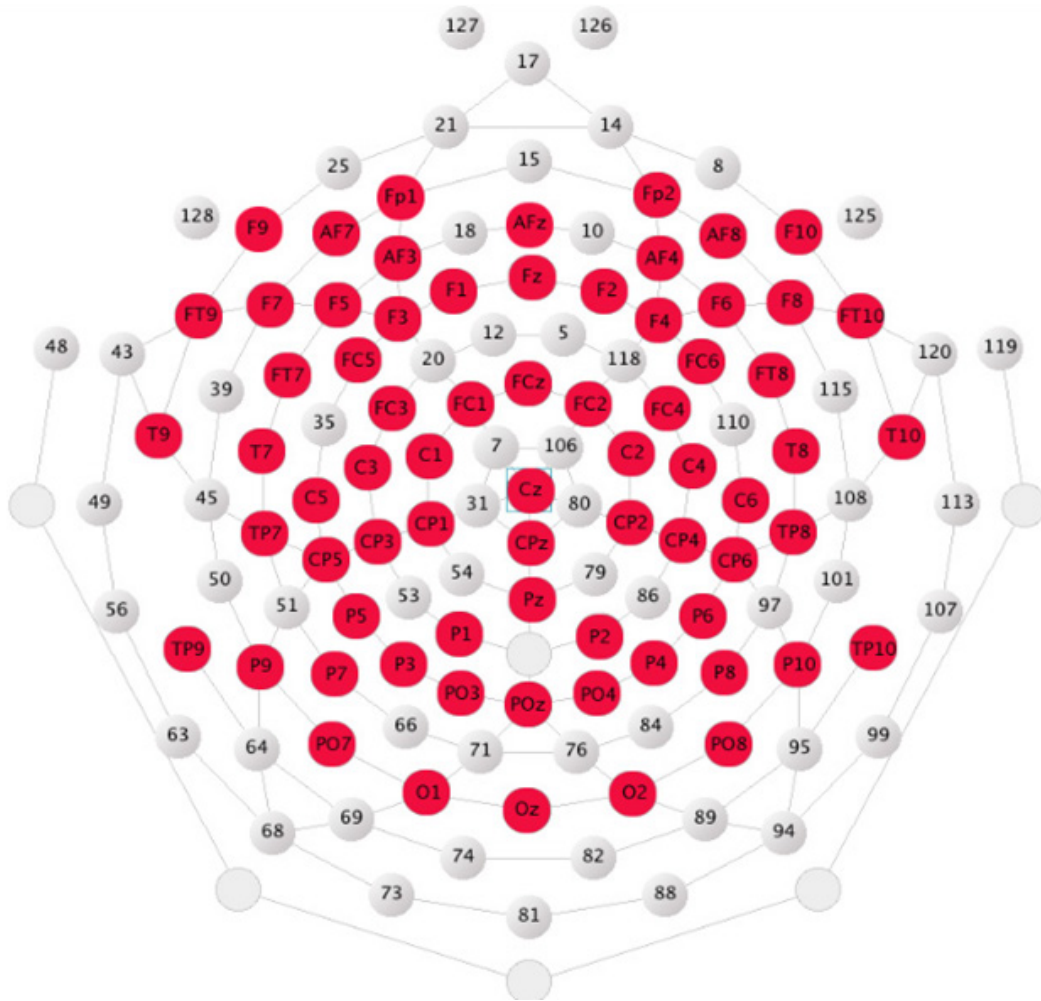


## EGI to 10-10 Layout Comparison



## EGI to 10-10 Conversion Table

10-10	HydroCel	ArcLength (cm)
F10	1	0.949038
AF8	2	0.879039
AF4	3	0.514681
F2	4	0.64
Fcz	6	0.84
FP2	9	0.72402
Fz	11	0.782608
FC1	13	0.91
FPZ	14	1.719687
FPZ	15	2.153488
Afz	16	0.480872
F1	19	1.070047
FPZ	21	1.81232
FP1	22	0.676512
AF3	23	1.360952
F3	24	0.795011
AF7	26	1.525864
F5	27	0.80
FC5	28	0.95
FC3	29	0.99
C1	30	0.69756351
F9	32	0.63
F7	33	2.135136
FT7	34	1.45
C3	36	0.436238892
CP1	37	1.105318346
Ft9	38	1.42
C5	41	1.059052641
CP3	42	0.841452438
T9	44	2.02
T11	45	3.29
T3-T7	45	2.445759155
Tp7	46	1.14
Cp5	47	0.330299473
P5	51	1.42
P3	52	1.700347748
CpZ	55	0.337813
TP9	57	1.12

10-10	HydroCel	ArcLength (cm)
T5-P7	58	1.58875435
P1	60	0.42
Pz	62	0.74
P9	64	2.28
P9	64	2.28
PO7	65	1.45
PO3	67	1.23
O1	70	1.769700151
Poz	72	0.32
Oz	75	1.04
PO4	77	1.29
O2	83	1.550805764
P2	85	1.08
Cp2	87	0.769807058
PO8	90	1.77
P4	92	0.884674687
CP4	93	0.499479459
P10	95	1.81
T6-P8	96	1.152553305
P6	97	0.95
CP6	98	0.497889883
TP10	100	1.22
TP8	102	1.84
C6	103	1.04678466
C4	104	0.497123711
C2	105	0.072678512
T12	108	3.16
T4-T8	108	2.155490778
FC4	111	1.07
FC2	112	1.28
T10	114	2.18
FT8	116	1.72
FC6	117	1.65
Ft10	121	1.68
F8	122	1.510734
F6	123	0.11
F4	124	0.251126
Cz	129	