



*A low-maintenance Edgewater, Maryland landscape with simple massing, evergreen structure, white seasonal blooms, soft ornamental grasses, and lavender-toned edging. The palette is designed to feel polished and timeless while keeping upkeep practical for a coastal Mid-Atlantic front yard.*

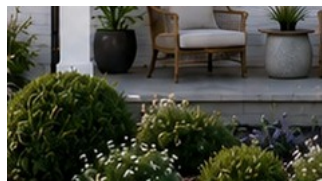
## Low-Maintenance Landscape Palette



### Hydrangea Masses

Dwarf white panicle hydrangea for soft seasonal blooms and easy repetition.

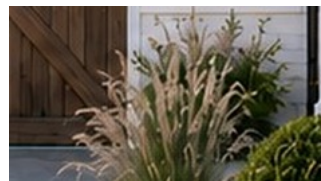
[Click for source](#)



### Evergreen Structure

Compact inkberry holly for rounded year-round foundation structure.

[Click for source](#)



### Ornamental Grasses

Upright switch grass adds movement, texture, and four-season interest.

[Click for source](#)



### Lavender-Toned Edging

Compact catmint for blue-purple color, pollinator value, and drought tolerance.

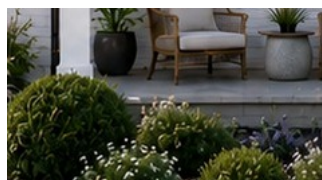
[Click for source](#)



### White Perennial Accent

Clean white daisy blooms to echo the hydrangeas and brighten the bed edge.

[Click for source](#)



### Rounded Shrub Alternative

Boxwood-style evergreen mounds for structure; verify boxwood health locally.

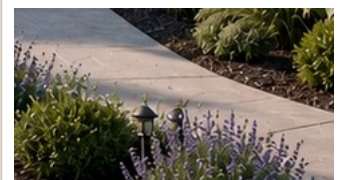
[Click for source](#)



### Smooth Walkway / Pavers

Clean large-format concrete slab look for a refined, easy-care approach.

[Click for source](#)



### Low-Voltage Path Lights

Simple path lighting to highlight the walkway and planting beds at night.

[Click for source](#)

## Landscape Direction Notes

Use repeated drifts and simple spacing instead of fussy mixed borders. Confirm final plant choices with a local nursery or landscape contractor for sun exposure, drainage, deer pressure, and exact planting zone. Keep beds mulched with crisp edges and limit annuals for lower maintenance.



## Clickable Landscape Source List

### HYDRANGEA MASSES

#### **Bobo Panicle Hydrangea**

[provenwinners.com/plants/hydrangea/bobo-panicle-](https://provenwinners.com/plants/hydrangea/bobo-panicle-)

### ROUNDED EVERGREEN SHRUBS

#### **Strongbox Inkberry Holly**

[provenwinners.com/plants/ilex/strongbox-inkberry](https://provenwinners.com/plants/ilex/strongbox-inkberry)

### ORNAMENTAL GRASSES

#### **Prairie Winds Totem Pole Switch Grass**

[provenwinners.com/plants/panicum/prairie-winds-t](https://provenwinners.com/plants/panicum/prairie-winds-t)

### LAVENDER-TONED EDGING

#### **Cat's Pajamas Catmint**

[provenwinners.com/plants/nepeta/cats-pajamas-cat](https://provenwinners.com/plants/nepeta/cats-pajamas-cat)

### WHITE PERENNIAL ACCENT

#### **Daisy May Shasta Daisy**

[provenwinners.com/plants/leucanthemum/amazing-da](https://provenwinners.com/plants/leucanthemum/amazing-da)

### BOXWOOD-STYLE ALTERNATIVE

#### **Green Velvet Boxwood**

[monrovia.com/green-velvet-boxwood.html](https://monrovia.com/green-velvet-boxwood.html)

### SMOOTH WALKWAY / PAVERS

#### **Techo-Bloc Blu 60 Smooth Slab**

[techo-bloc.com/shop/slabs/blu-60-mm-slab-smooth-](https://techo-bloc.com/shop/slabs/blu-60-mm-slab-smooth-)

### LANDSCAPE PATH LIGHTS

#### **VOLT Low Voltage Path Lights**

[voltlighting.com/shop/landscape-lighting/path-li](https://voltlighting.com/shop/landscape-lighting/path-li)

## Low-Maintenance Notes

- Plant in repeated groups for a cleaner, lower-maintenance look.
- Use dark mulch and a crisp bed edge to reduce weeds and visually organize the beds.
- Hydrangeas and perennials need regular watering during establishment, then can be maintained with seasonal pruning.
- Confirm deer pressure, drainage, salt exposure, mature plant size, and exact sun/shade conditions before purchasing.
- Landscape plan is conceptual; final quantities and spacing should be verified onsite.