



36W SINGLE COLOUR BACKLIT LED PANEL

Model No	21472/05	21474/05
Colour Temperature	4200K	4200K

Before first using your new Brilliant LED Panel it is most important that you read and follow these instructions, even if you feel you are quite familiar with this type of product. Retain this document for future reference.

THIS FITTING MUST BE INSTALLED BY A QUALIFIED ELECTRICIAN

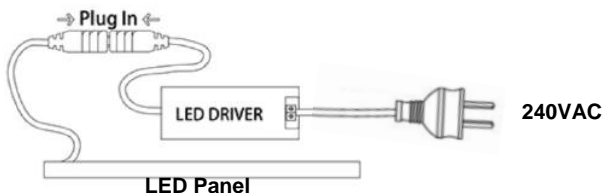
Specification:

- Fitting : Aluminium Frame, PS Diffuser, White Trim.
- Operating voltage: 230/240VAC 50Hz.
- Lamp type: Integrated LED 36W.
- Colour Temperature: 4200K
- Protection Class : Class II LED Driver, Class III LED Panel.
- Mounting: Recessed.
- Dimming: Non-Dimmable.
- Weight: 1.5Kg

LED Panel Dimensions:

	L (mm)	W (mm)	H (mm)
21472/05	1200	300	30
21474/05	600	600	30

Connection:



WARNING:

- Driver can not be covered with thermal insulation
- Installation, repair and/or inspection must be conducted by qualified personnel in accordance with Australian Standards and local Building codes.
- LED panel must only be used with the control gear provided.
- Ensure the mounting surface or structural member used for installation can support the weight of the Panel.
- Do not install in a position where the fixture can be easily accessed by children or infirm persons.
- Do not perform modification to the fixture.
- Do not touch the fixture when switched on.
- This fixture is not dimmable.
- Failure to follow these instructions will void the warranty.

Environmental Protection

This electrical product should not be disposed as normal waste. Please always recycle!
Check with your Local Council about your recycle options.

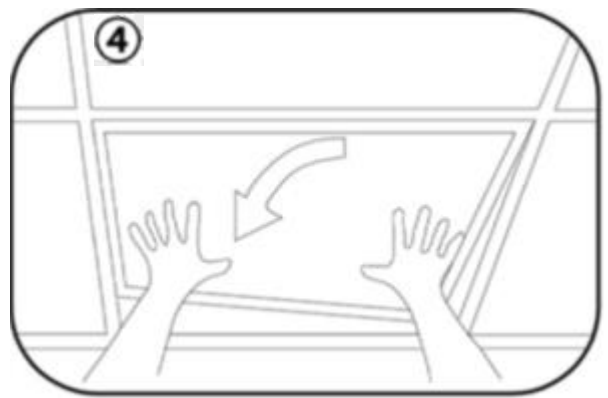
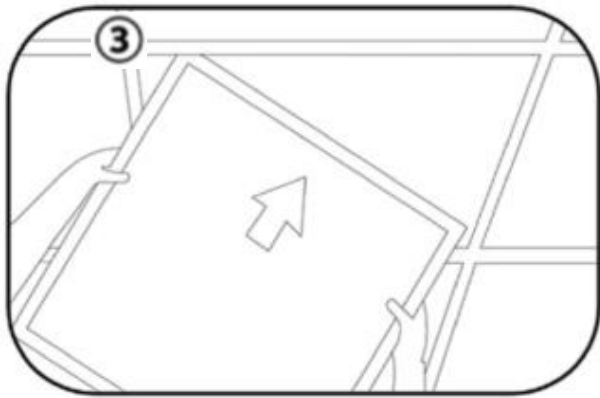
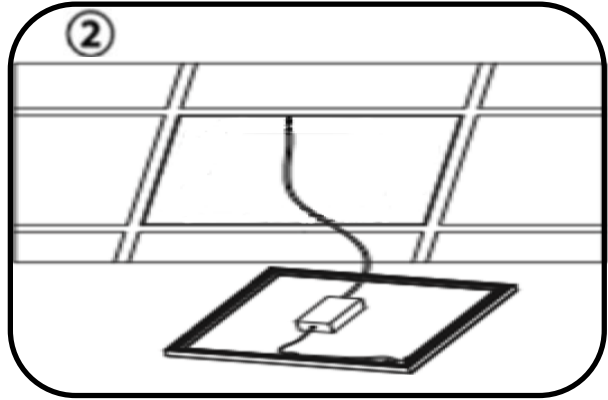
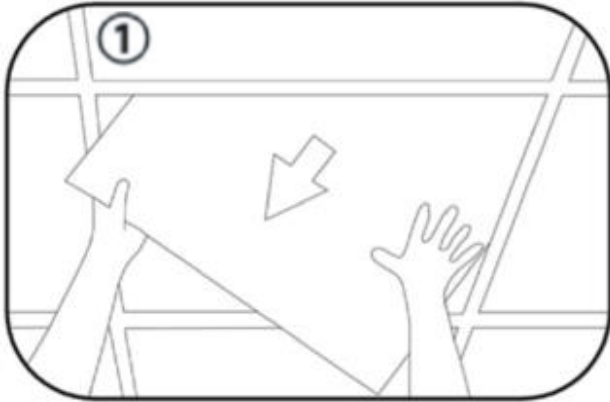




36W SINGLE COLOUR BACKLIT LED PANEL

Model No	21472/05	21474/05
Colour Temperature	4200K	4200K

Installation:



Instructions for Ceiling Recessed (T-BAR) Installation:

1. Ensure mains supply is switched OFF.
2. Remove the ceiling plaster slab (Fig.1).
3. Feed the main AC wire to driver. Connect driver and panel by plug-in barrel connector (Fig.2).
4. Fix the panel light into plaster ceiling (Fig. 3).
5. Make sure the LED panel light is firmly fixed (Fig. 4).
6. Turn the power ON



36W SINGLE COLOUR BACKLIT LED PANEL

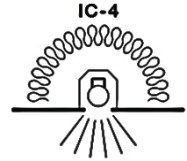
Model No	21472/05	21474/05
Colour Temperature	4200K	4200K

INSULATION RATING IC-4:

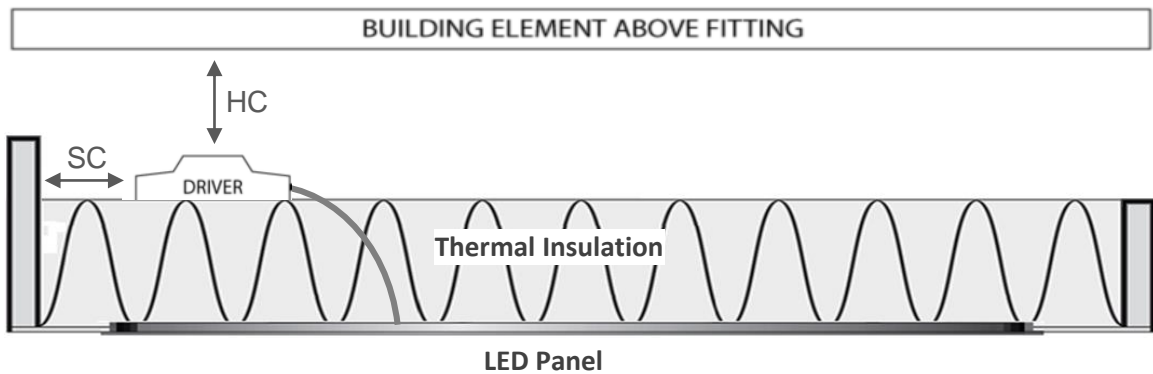
LED Panel has achieved an IC-4 insulation rating in accordance with AS/NZS 60598.2.2.

AN IC-4 RECESSED LUMINAIRE CAN BE ABUTTED AGAINST OR COVERED WITH NORMALLY FLAMMABLE MATERIALS INCLUDING BUILDING INSULATION

WARNING - DRIVER NOT SUITABLE FOR COVERING WITH THERMAL INSULATION



WARNING - RISK OF OVERHEATING OR FIRE IF CLEARANCE DISTANCES ARE COMPROMISED.



DIMENSIONS FOR LED DRIVER	CLEARANCE
SC – Side clearance to thermal insulation and building element	20mm
HC – Height clearance to thermal insulation and building element	20mm

CONSIDERATION:

Full insulation coverage of the Fitting will increase lumen depreciation resulting in a shorter life span than an open air installation.



36W SINGLE COLOUR BACKLIT LED PANEL

Model No	21472/05	21474/05
Colour Temperature	4200K	4200K

Warranty:

Brilliant Lighting warrants this product against defects in manufacture and workmanship for a period of 2 years from date of purchase. For products used in non-domestic or commercial applications, Brilliant Lighting warrants this product for a period of 3 months from date of purchase. This warranty is only valid for products installed by a qualified electrical contractor and operated within the guidelines specified by Brilliant Lighting, and within the correct operating voltage ranges as stated on the product's rating label.

Warranty does not include damage or loss arising from incorrect installation, operation or maintenance of this product, damage caused through modification, incorrect installation, service by unqualified or unauthorised personnel or lack of regular maintenance and cleaning. Proof of installation by qualified personnel may be required, eg. Electrical Safety Certificate. Proof of purchase must be supplied with all warranty claims.

This warranty is provided in addition to any other rights and remedies of the customer under any law. Liability is limited to replacement or reimbursement of product only.

Our goods come with guarantees that can not be excluded under the Australian Consumer Law. You are entitled to a replacement or refund for a major failure and compensation for any other reasonably foreseeable loss or damage. You are also entitled to have the goods repaired or replaced if goods fail to be acceptable quality and the failure does not amount to a major failure.

Any claim under this warranty must be made within 2 years of the date of purchase of the product. To make a claim under the warranty, take the product (with proof of purchase – receipt or similar) to the store where you purchased the product or contact Brilliant Lighting at the address below, or use our warranty claim form found on our website.

This warranty is given by:

Brilliant Lighting (Aust)Pty. Ltd.
ABN 37 006 203 694
956 Stud Road Rowville, VIC 3178
Phone: 03 9765 2555
Email: warranty@brilliantlighting.com.au
Made in China

WARRANTY REGISTRATION

Register your product, to ensure you protect your purchase with hassle free warranty and technical support. Ask our experts for advice and learn about new products before they are released.

Scan the QR code to register your product to be part of our Customer Care Program.

