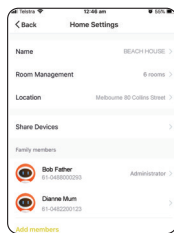


## Configure your BrilliantSmart App

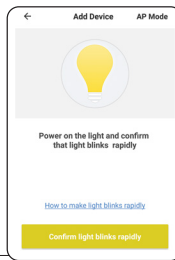
### Setting up your Home

You can setup multiple homes or locations. Click **'Add Home'** button. Or Click on **'Home'** top left if you are adding or modifying details then **'Home Management'** to setup your home(s), add or rename rooms and share devices.

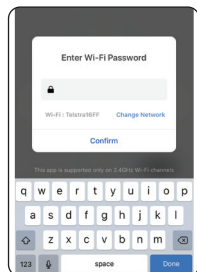


### Add your Smart Device to your App

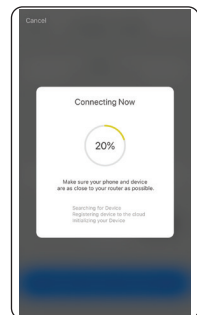
1. Arrange installation of your smart downlight by a Licensed Electrical Contractor (refer installation instructions at start of this manual).
2. Once safely wired, the licensed electrical contractor should power on device at wall switch. Turn the wall switch OFF/ON until the downlight starts to blink rapidly (2 times per second).
3. Open the BrilliantSmart app, tap **'Add Device'** (if empty room) or **'+'** to add your Smart downlight.
4. Select **'Lighting Devices'** in the list of devices. If downlight is blinking rapidly then press **'Confirm indicator rapidly blink'**.



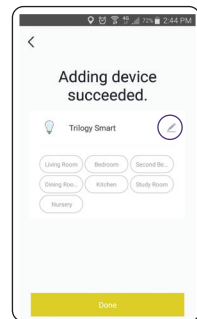
5. Enter your WiFi password.



Connection will now begin.



6. Once connected you'll get a menu **'Adding device succeeded'**. Select the room device and press **'Done'**. You can click on the pen to change the device name.
7. The smart device can now be controlled by the BrilliantSmart app.



## Warranty

Brilliant Lighting warrants this product against defects in manufacture and workmanship for a period of 5 Years from date of purchase. Warranty does not include damage or loss arising from incorrect installation, operation or maintenance of this product, damage caused through modification, or incorrect installation.

Our goods come with guarantees that cannot be excluded under the Australian Consumer Law. You are entitled to a replacement or refund for a major failure and compensation for any other reasonably foreseeable loss or damage. You are also entitled to have the goods repaired or replaced if goods fail to be of acceptable quality and the failure does not amount to a major failure.

Any claim under this warranty must be made within 5 Years of the date of purchase of the product. Refer to our website [brilliantlighting.com.au](http://brilliantlighting.com.au) for terms and conditions and warranty claims.

This warranty is given by:

Brilliant Lighting (Aust) Pty. Ltd.  
ABN 37 006 203 694  
956 Stud Road  
Rowville VIC 3178

Phone: 03 9765 2555

Email: [warranty@brilliantlighting.com.au](mailto:warranty@brilliantlighting.com.au)

MADE IN CHINA

2395P 12/21 00

## Warning

1. To prevent injury, this apparatus must be installed by a licensed electrical contractor.
2. For indoor use only. Do not cover with insulation. Not suitable for outdoors
3. Please make sure the smart downlight is not overloaded.
4. Do not open or tamper with downlight housing. Injury may occur.
5. Do not allow children to play with wall switch turning ON/OFF rapidly. This can cause the Smart downlight to be reset.
6. Power surge/power loss could possibly reset Smart downlight. If this happens, follow the setup instructions.

Brilliant Lighting  
956 Stud Road  
Rowville Vic 3178 Australia

[www.brilliantlighting.com.au](http://www.brilliantlighting.com.au)

### Australian Sales

T 03 9765 2555

T 1800 817 754 (interstate only)

F 03 9763 0277

E [sales@brilliantlighting.com.au](mailto:sales@brilliantlighting.com.au)

### New Zealand Sales

T 09 974 9618

E [sales@brilliantlighting.co.nz](mailto:sales@brilliantlighting.co.nz)



**Brilliant SMART** WiFi Downlight  
TRILOGY 8W 750LM CCT LED  
22086/05



**USER MANUAL**

### Box content

Smart CCT Downlight x 1  
Flex and Plug x 1  
User Manual x 1



### Technical Specifications

**Model Number:** 22086/05  
**Colour:** White  
**CCT LED:** Warm White - Cool Light - Natural  
**Supply voltage:** 220-240V AC 50Hz  
**Insulation rating:** IC-4  
**Dimmable:** via BrilliantSmart App  
**TA:** 0...+35°C  
**Cutout:** 90mm  
**Security:** Mac Encryption; WEP/WAPI/TKIP/AES  
**WiFi Standard:** IEEE802.11b/g/n  
**System Req's:** iOS 8.0 or higher, Android 4.1 or higher

**Classification -** Class II Construction.

### Installation

**RECOMMENDED TO BE INSTALLED BY A QUALIFIED ELECTRICAL CONTRACTOR.**

**BEFORE INSTALLATION, PLEASE CHECK THAT THE LOCATION OF THE SMART DEVICE IS WITHIN RANGE OF YOUR HOME WIFI AND SIGNAL IS STRONG (2 BARS).**

### IMPORTANT SAFETY ISSUES

Ensure the power is disconnected before installing. This product is NOT suitable for damp or explosive environments. Modification of this product will void any warranty. Indoor use only. Do not cover in insulation.

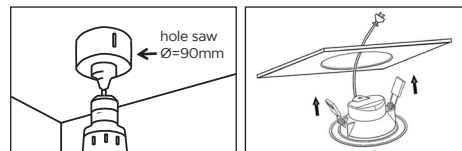
The installation must follow AS/NZS 3000 wiring rules and building codes.

When drilling into walls and ceilings, care must be taken to ensure you do not damage electrical wiring and other hidden utilities.

### Installation

Install downlight into suitable cut-out (90mm). Ensure it is secured firmly via spring clips.

Insert power plug into lights electrical power outlet in roof cavity.

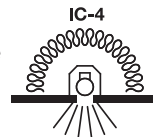


Turn on the downlight via existing wall switch and follow the BrilliantSmart app instructions.

### Insulation rating IC-4

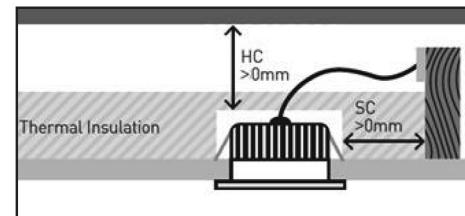
This downlight has achieved an IC insulation rating in accordance with AS/NZS 60598.2.2.

A type IC-4 recessed luminaire can be abutted against normally flammable materials, including building insulation, and can be covered in normal use.



Loose-fill insulation is not recommended to abut or cover the downlight.

IC-4 rating is applicable to the downlight only.



Dimension	Clearance
SC - side clearance to thermal insulation, building element	0mm
HC - height clearance to thermal insulation, building element	0mm

### Consideration

Full insulation coverage of the downlight will increase lumen depreciation resulting in a shorter life span than an open air installation.

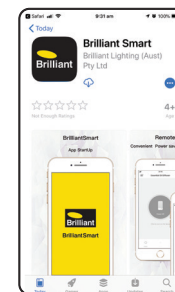
### Connect to your WiFi

Ensure your mobile phone is connected to your 2.4GHz WiFi network.

Your mobile phone and your smart device need to be within a maximum range of approx. 30 metres from your WiFi router.

### Download the BrilliantSmart App

Please download the free BrilliantSmart app from the App store or Google Play store, or scan the QR code below.



### Register the BrilliantSmart App

Open the BrilliantSmart app. For new users, register a new account or if existing user, login with your user name and password.