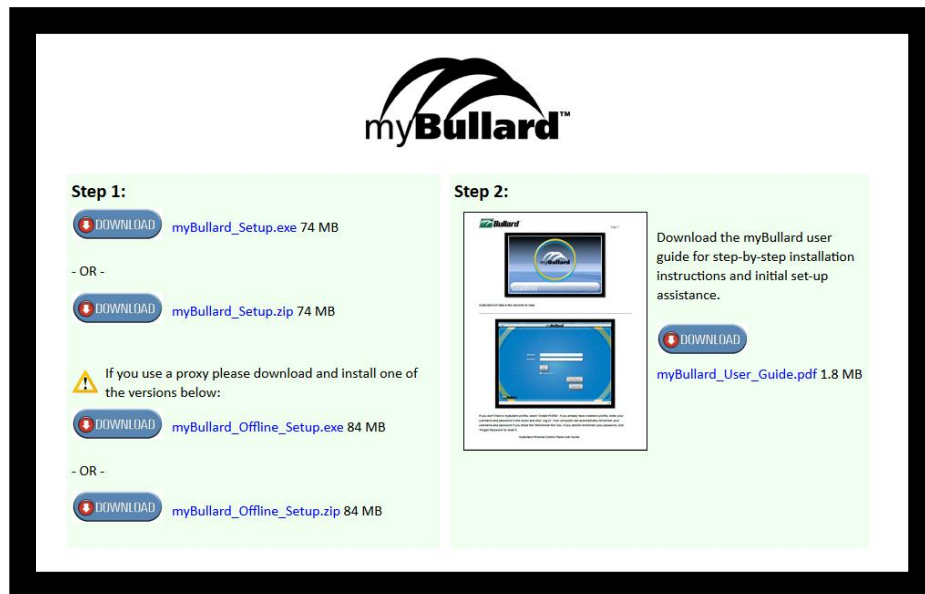
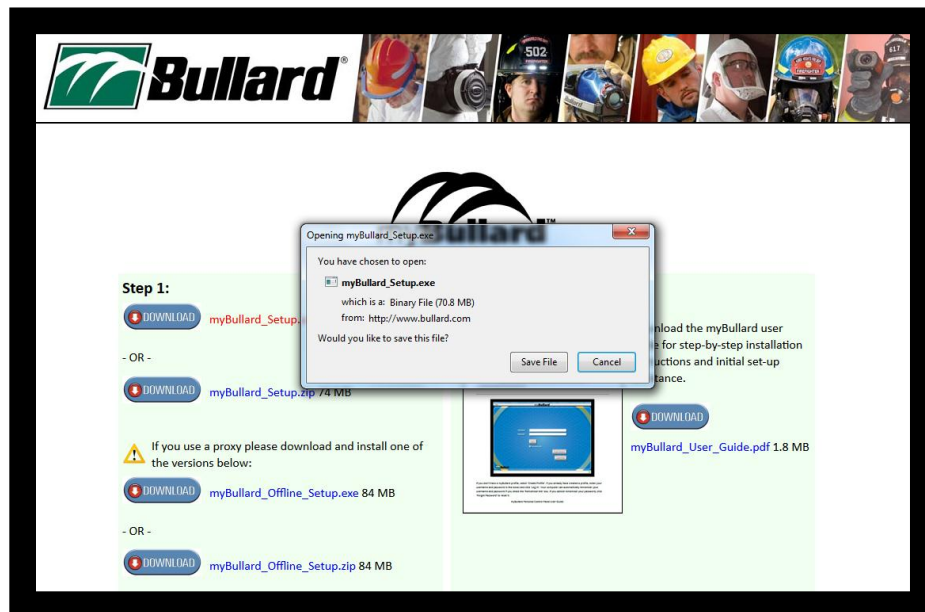


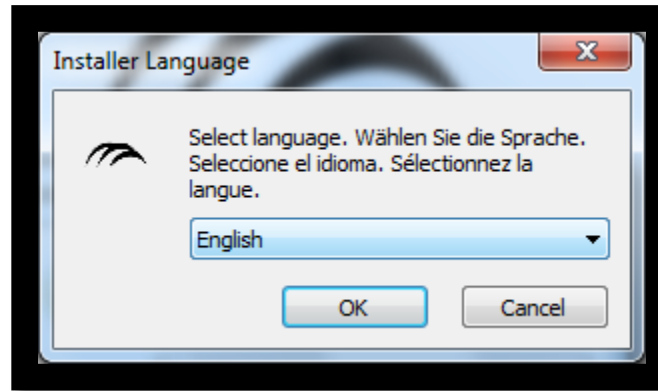
## myBullard™ Personal Control Panel User Guide



Go to [www.bullard.com/mybullard](http://www.bullard.com/mybullard) and click on the setup file in order to download the myBullard installer to your PC.

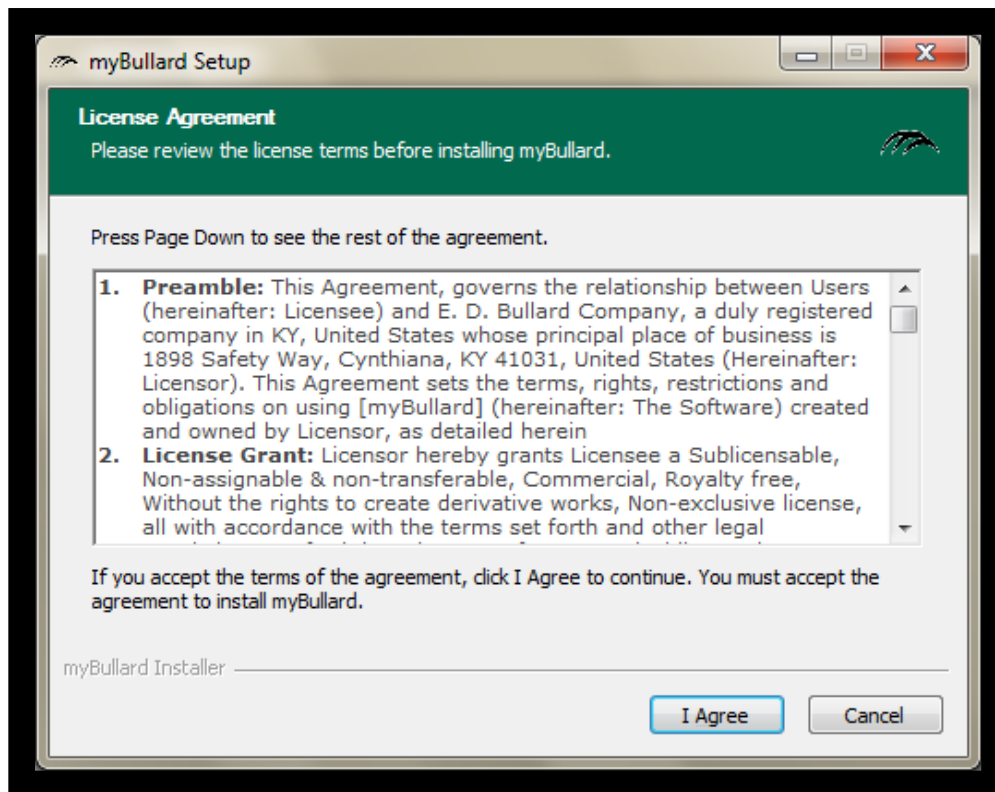


Your browser / anti-virus software may ask you if it is okay to run this file, and you may see a dialog box such as this or a bar across the bottom of your screen. If so, click 'run', or 'save' to proceed. The installer will begin the download process.

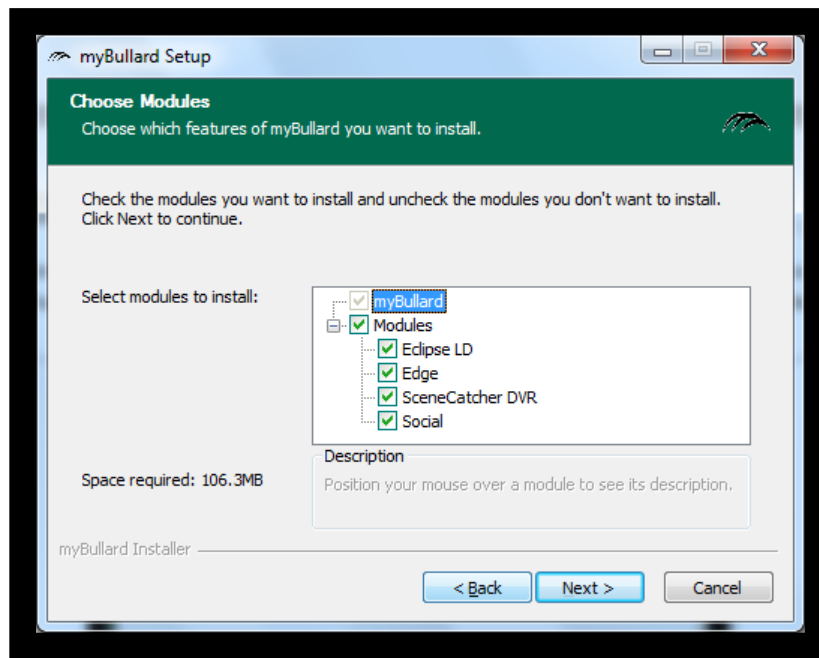


Select your language and follow the installation guide. Your version of Windows may prompt you with a dialog box to allow the program to make changes to the computer. If you receive this prompt, click 'Yes'.

---

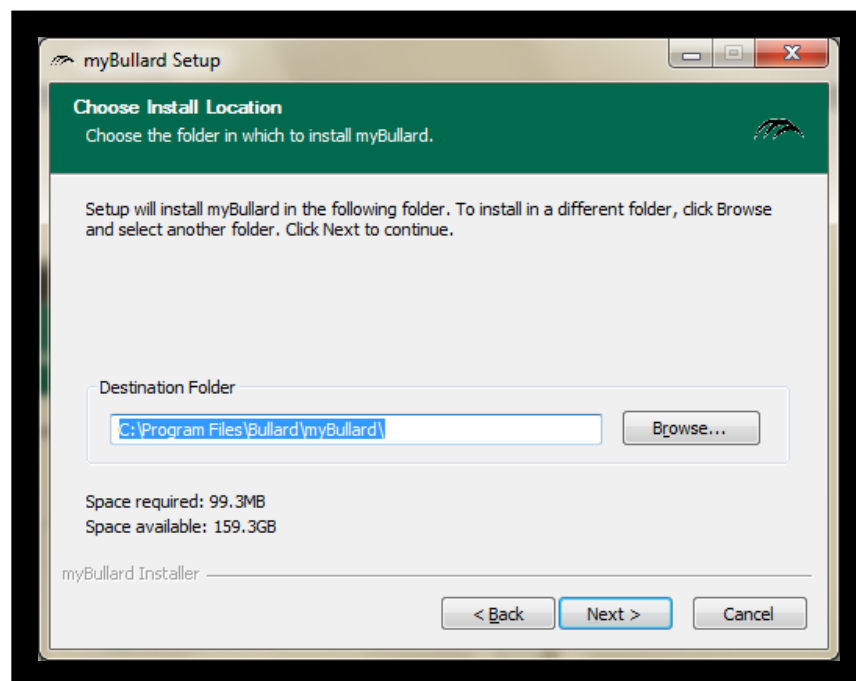


Review the license agreement and click 'I Agree' to accept and install myBullard. Upon acceptance, the myBullard setup file will begin downloading.

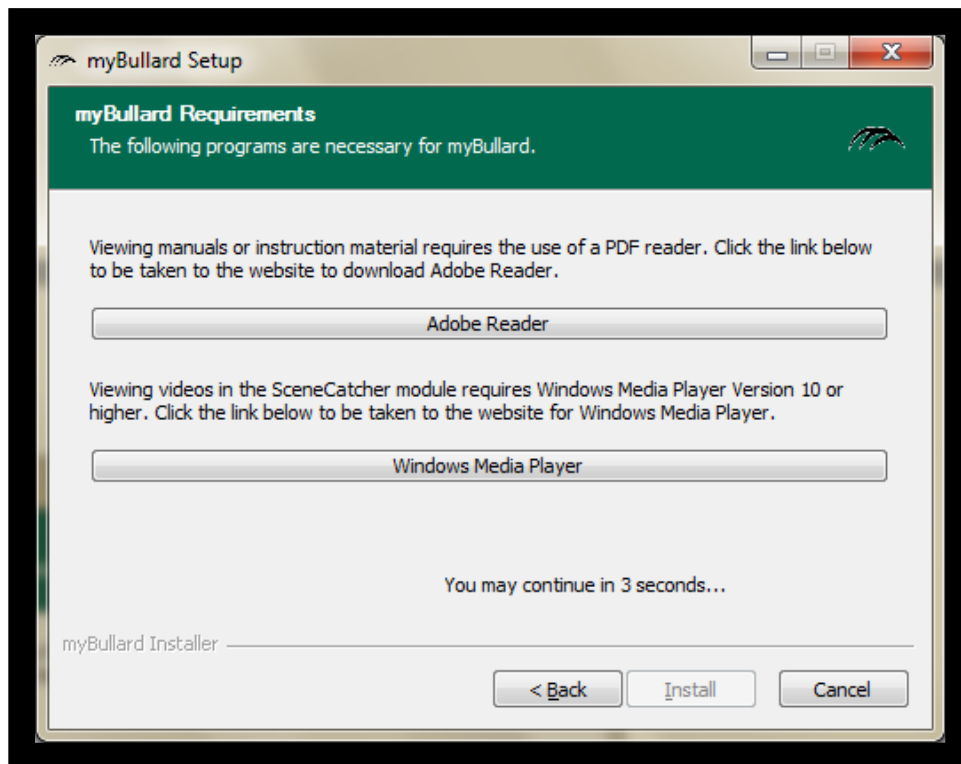


myBullard installs modules, which are independent sections of content that support products and services. myBullard modules include those for thermal imagers and accessories, and new modules are added as new products and services become available. These modules function independently so you only need to install modules that pertain to the products you have purchased or that fit your interests. Select the modules to install with myBullard and then click the Next button.

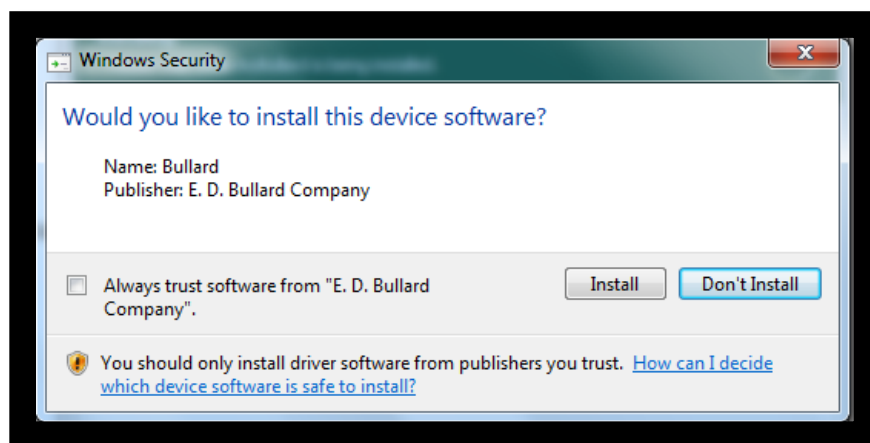
---



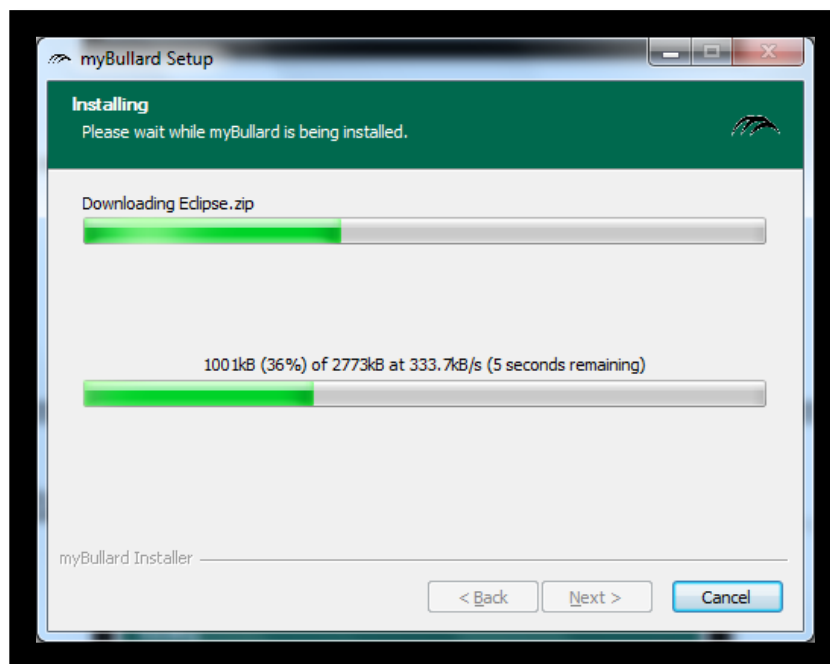
Accept the default destination folder location and click 'Next'.



Certain modules in myBullard require the use of Adobe Reader or Windows Media Player version 10 or higher. If you do not have either or both of these software programs on your computer, click the appropriate button(s) to go to the websites to download the program(s).

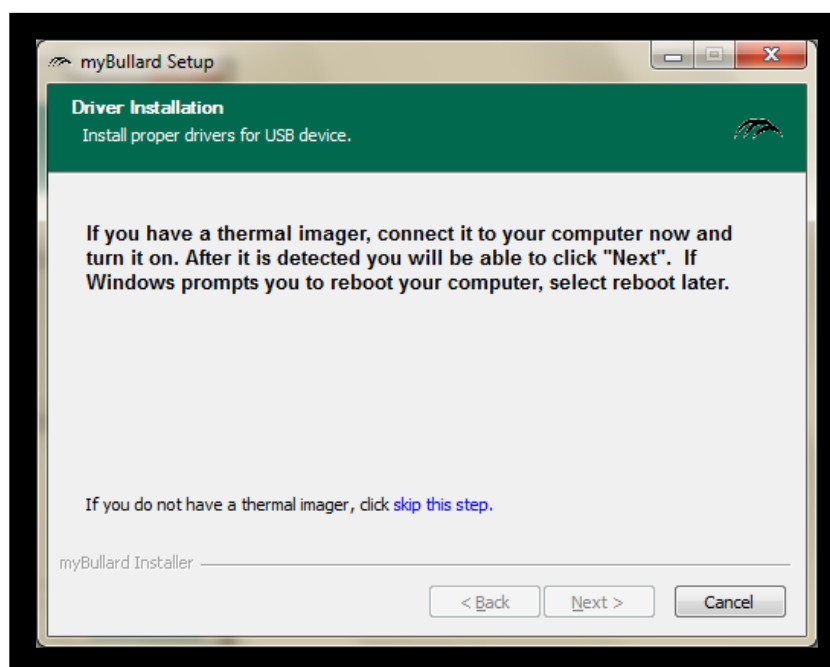


If prompted by Windows to install device software by 'E.D. Bullard Company', click 'install'.

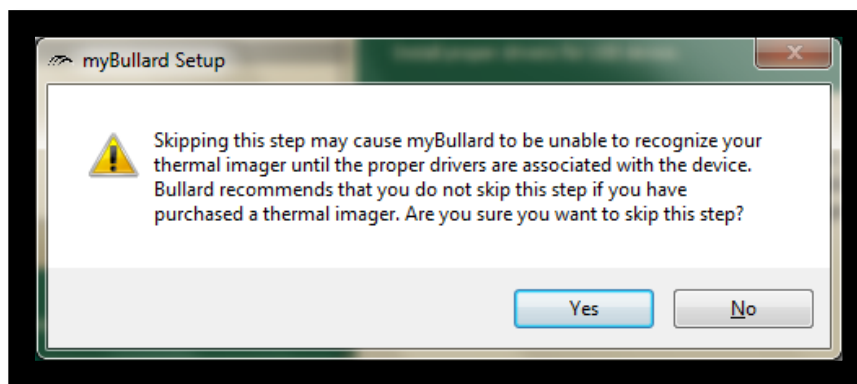


The installation process will begin and may take several seconds to complete.

---

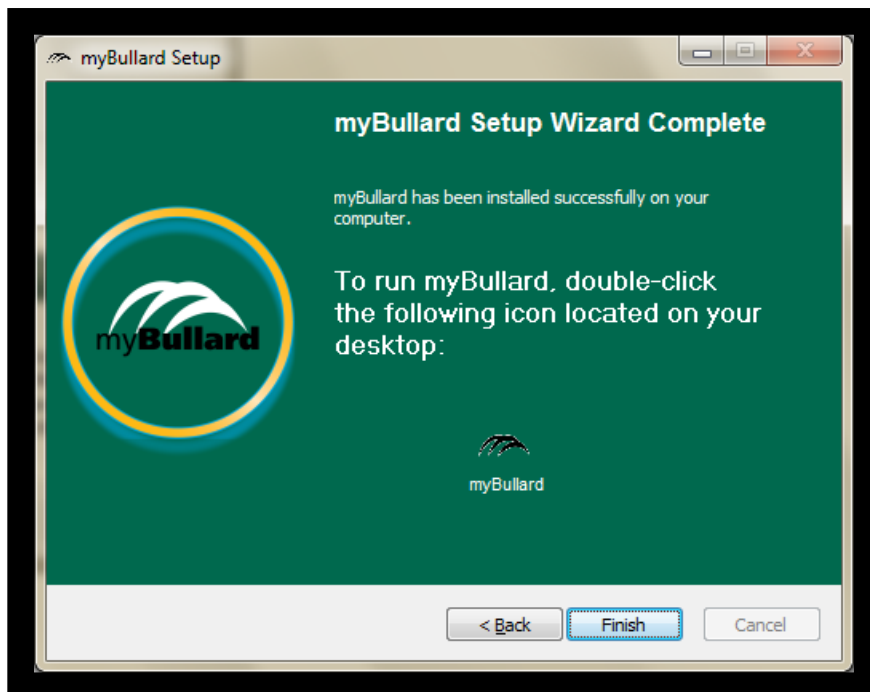


If you have a Thermal Imager you plan to use with myBullard, connect it to your computer now via the communications assembly shown in the Quick Start Guide / User Manual and click 'Next'. If you do not have a Thermal Imager, you can skip this step by clicking the blue hyperlink that states 'skip this step'.



If you skip this step, a confirmation dialog box will appear. If you are sure you do not have a Thermal Imager to use with myBullard, click 'Yes'. Otherwise, click 'No' and connect your Thermal Imager.

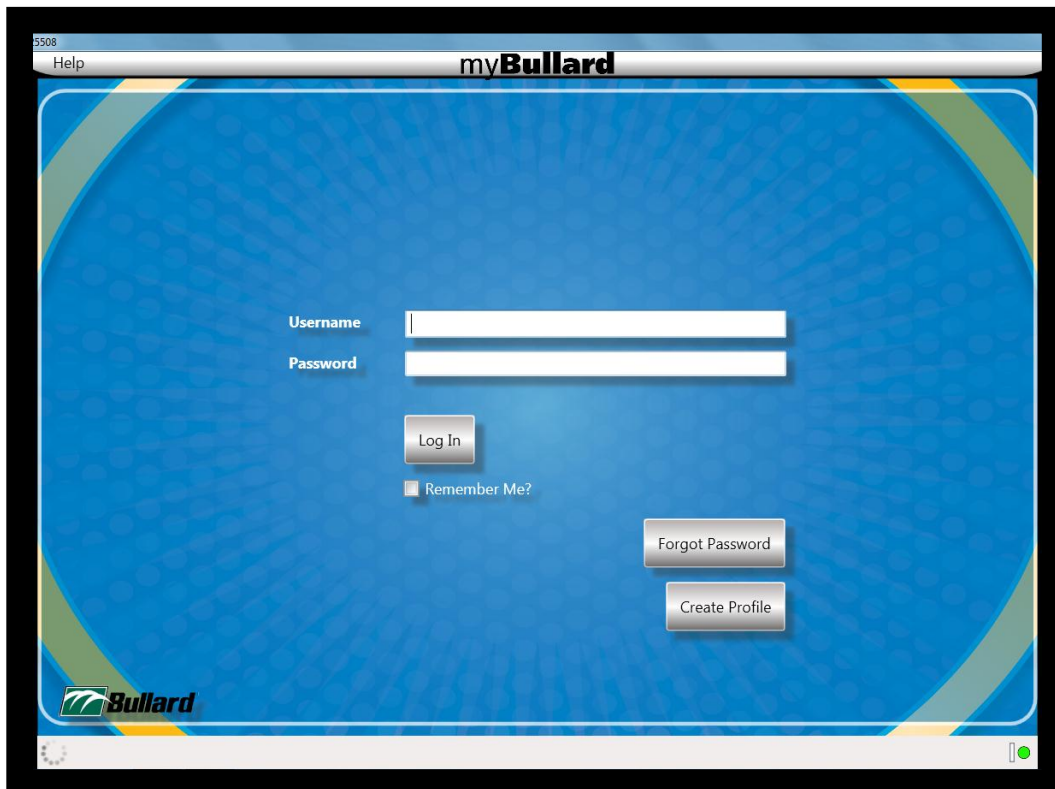
---



Once the installation process is complete, click 'Finish'. You will find the myBullard icon on your desktop. Click the icon to run myBullard. Note: if you saved the setup file to your desktop, you should delete this so that you do not inadvertently confuse this with the myBullard icon.

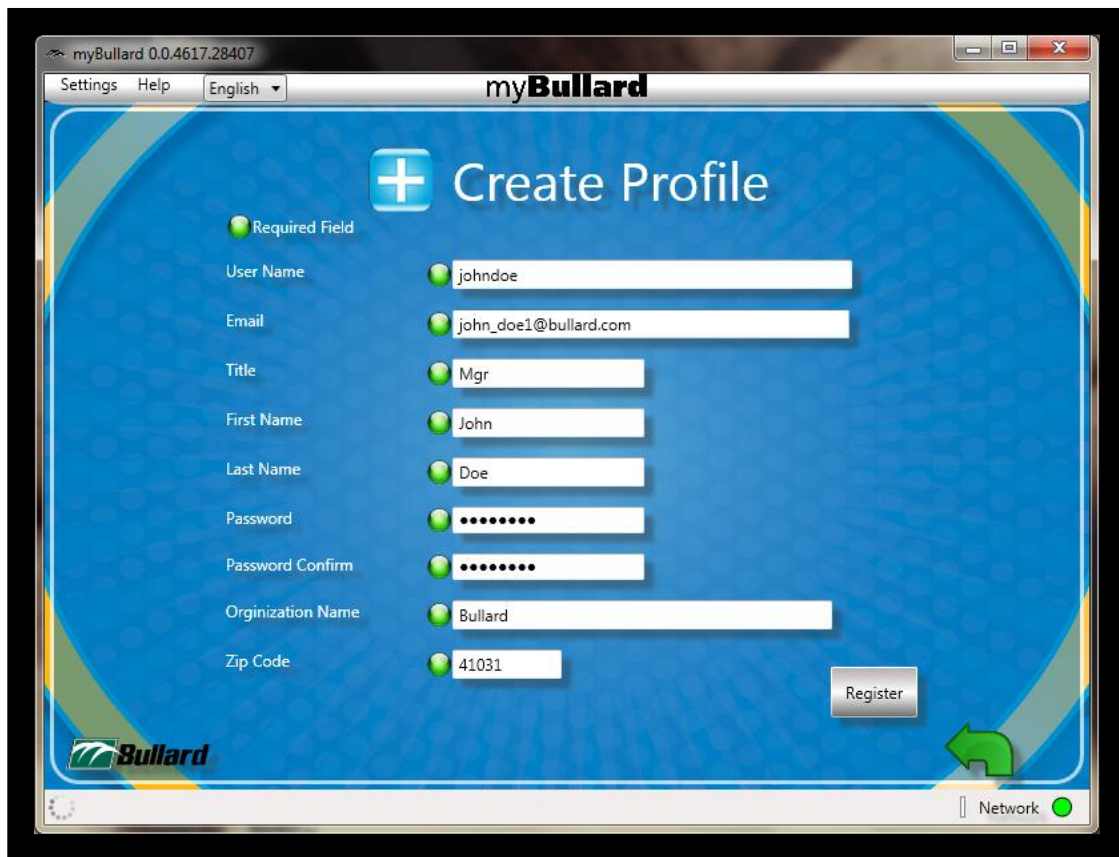


myBullard will take a few seconds to load.

A screenshot of the myBullard login interface. The window has a title bar with "3508" and "Help". The main area has a blue background with a circular pattern. It contains two input fields for "Username" and "Password", a "Log In" button, a "Remember Me?" checkbox, a "Forgot Password" button, and a "Create Profile" button. The Bullard logo is in the bottom left corner.

If you don't have a myBullard profile, select 'Create Profile'. If you already have created a profile, enter your username and password in the boxes and click 'Log In'. Your computer can automatically remember your username and password if you check the 'Remember Me' box. If you cannot remember your password, click 'Forgot Password' to reset it.

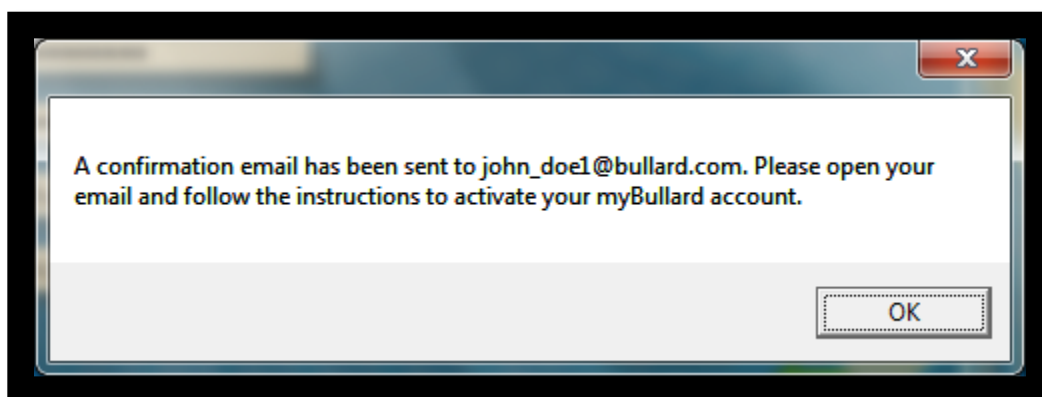




The screenshot shows a software window titled "myBullard 0.0.4617.28407". The window has a menu bar with "Settings", "Help", and a language dropdown set to "English". The main content area is titled "Create Profile" with a plus icon. It contains a list of fields, each with a green circle icon indicating it is a required field. The fields and their values are: User Name (johndoe), Email (john\_doe1@bullard.com), Title (Mgr), First Name (John), Last Name (Doe), Password (masked with dots), Password Confirm (masked with dots), Organization Name (Bullard), and Zip Code (41031). A "Register" button is located at the bottom right of the form area. A green arrow points from the "Register" button towards the bottom right corner of the window. The Bullard logo is in the bottom left corner, and a "Network" status indicator with a green dot is in the bottom right corner.

To create a profile, complete all the fields above and click 'Register'.

---



A confirmation email will be sent to the email address you listed in your profile. Open your email and follow the instructions to activate your account. If you don't receive your confirmation email within a few minutes, please check your spam/junk folder as certain email security / anti-virus programs may block the email from going directly to your inbox.



**From:** [register@bullard.com](mailto:register@bullard.com) [mailto:[register@bullard.com](mailto:register@bullard.com)]  
**Sent:** Tuesday, October 02, 2012 1:45 PM  
**To:** [philip\\_raider@bullard.com](mailto:philip_raider@bullard.com)  
**Subject:** myBullard Profile Confirmation

Dear Philip,

Thank you for creating a myBullard™ profile.

To activate your profile and start using myBullard™, please click the following link:

[Click here to activate your myBullard™ account.](#)

Thank you again for using myBullard™. We value your business and look forward to continuing to protect and serve you in the future.

Be safe,

The myBullard™ Team

[www.bullard.com](http://www.bullard.com)

Customize your products at [www.BuildYourBullard.com](http://www.BuildYourBullard.com)

Click the hyperlink that says 'Click here to activate your myBullard™ account'. This confirms your email address.



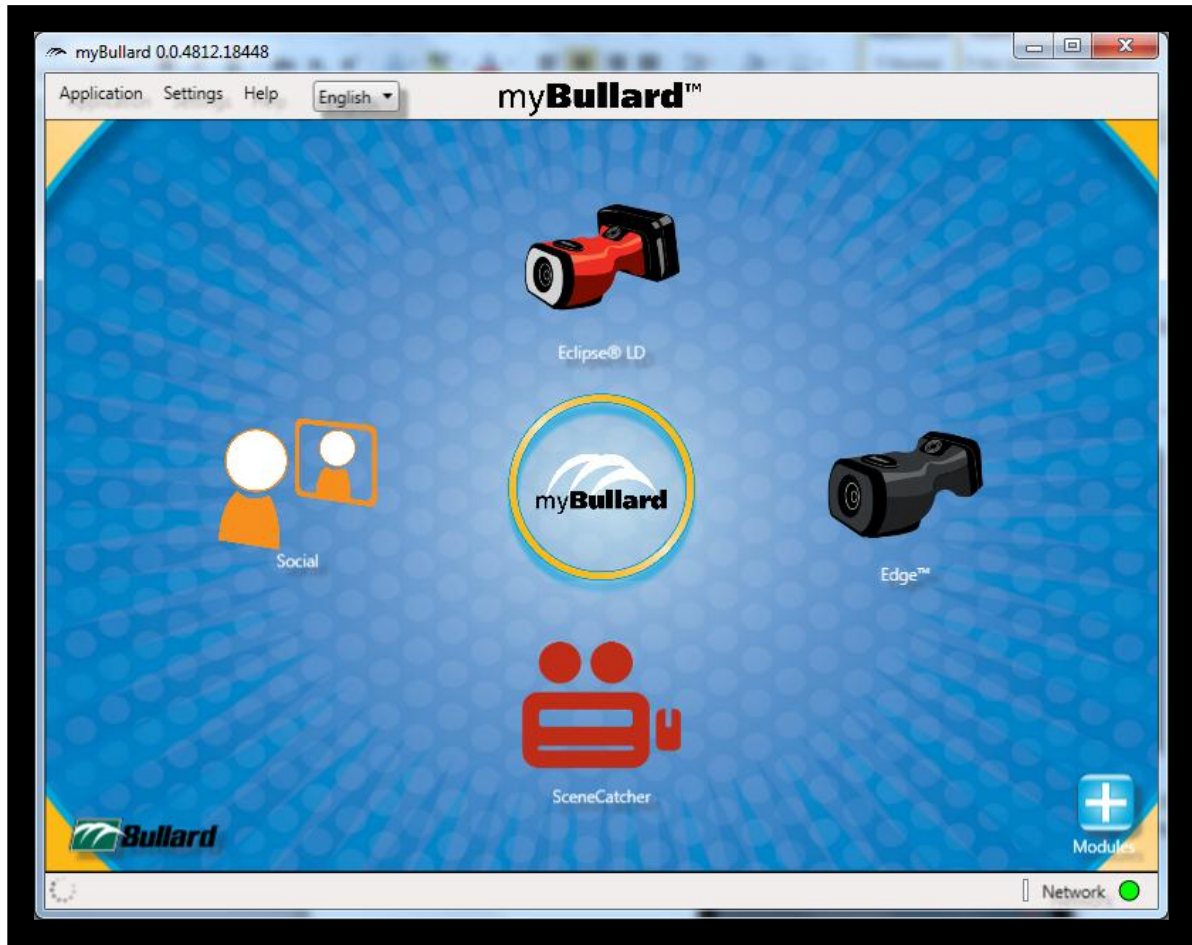
Thank you for activating your myBullard™ profile!

You are now ready to log in. To do so, simply open myBullard and log in using the username and password that you chose when you created your profile.

If you have any questions, please call 877-BULLARD (285-5273) (toll-free within USA) or +1-859-234-6616 or go to [www.bullard.com](http://www.bullard.com).

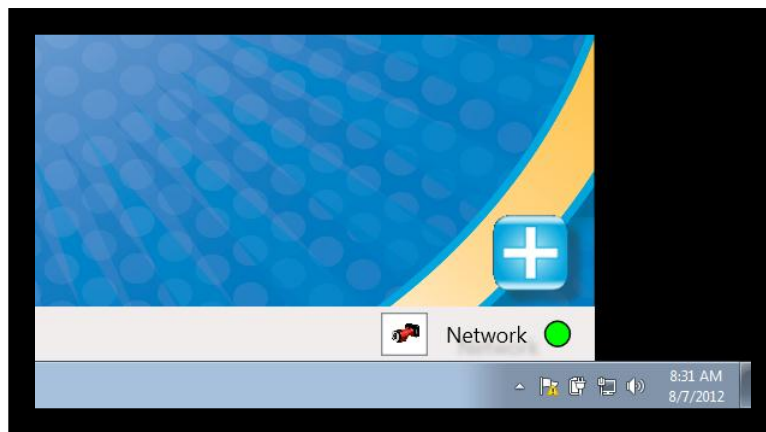
Copyright © 2003-2012 E.D. Bullard Company

You will be redirected to the following page indicating that you have successfully activated your profile. Return to myBullard and log in.

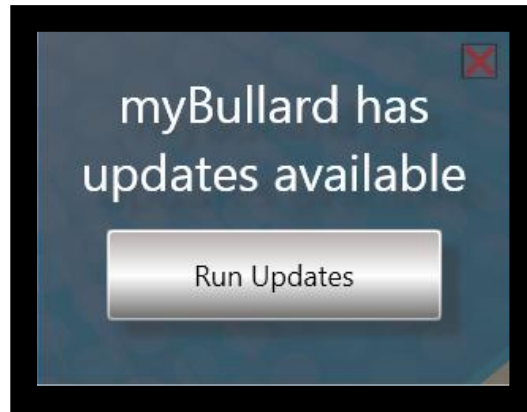


Once you have logged in, you will see your myBullard module icons on the main screen. Click on the icon to open the module.

---

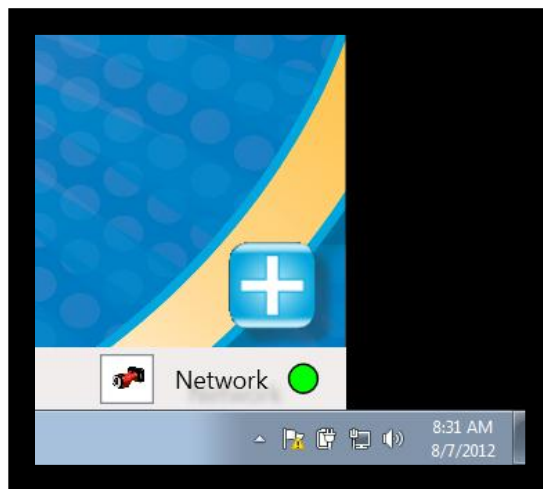


To add more modules to myBullard, select the '+' button in the bottom right hand corner of the screen. New modules will be made available periodically, so be sure to check for new modules regularly.

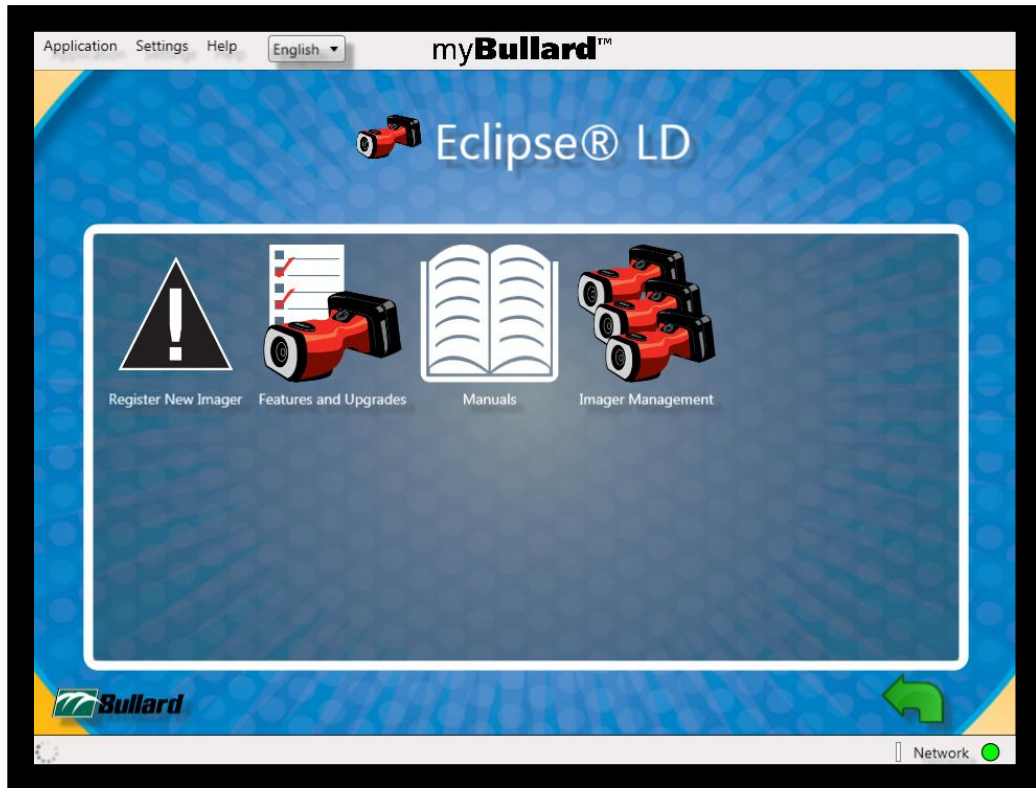


Enhancements and upgrades will become available periodically for myBullard. If prompted to do so, select the 'Run Updates' button. Once the updates are installed, you may be prompted to run the update by Windows. Select 'yes' in order to complete the process.

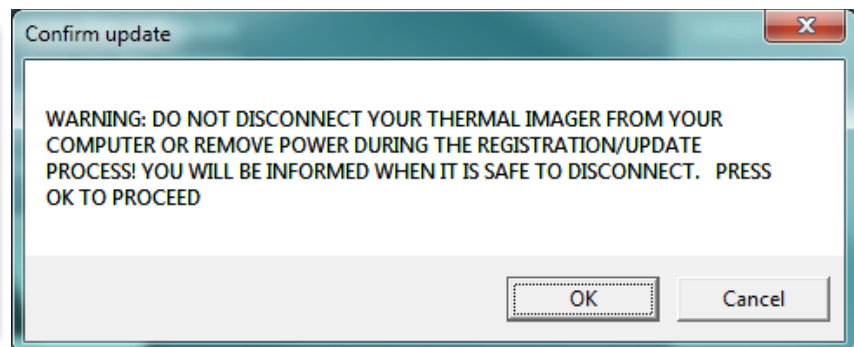
---



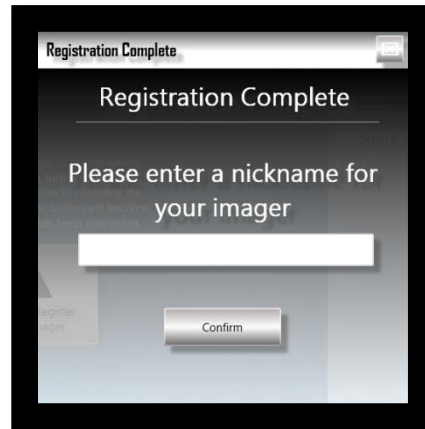
Registering or updating your Bullard product via myBullard requires an Internet connection and a USB interface to your product. The 'Network' icon will turn green when an Internet connection has been established. An icon will appear to the left of the network icon whenever a Bullard product is connected and after Windows has completed the driver installation. Please note that this may take several seconds the first time you plug a Bullard device into your PC or when you change USB ports.



In order to register your Eclipse LD thermal imager, you will need to open the Eclipse LD module and double-click on the 'Register New Imager' icon. You may be prompted to update the information in your profile before completing the registration process.



Once you have updated your profile information, you may proceed with imager registration. Be sure to connect your Eclipse LD to your PC, power it on and wait for the 'Eclipse LD Connected' icon to appear in the bottom right of your screen. Proceed with registration by clicking the 'Click To Register Your Imager' button. **Do not disconnect your imager or remove power until this process is complete.** This process may take several seconds. If you have multiple imagers that require registration, simply wait for the registration process to complete, before disconnecting your imager.



After registration, you will be prompted to enter a nickname for your thermal imager to help identify it. Once complete, disconnect your imager and then connect the next one to your communication assembly and click the 'Click To Register Your Imager' button again.



You can download firmware updates and feature upgrades for your Eclipse LD thermal imager from the 'Imager Management' menu. If an update is available, you will see a checkmark next to the imager's serial number that requires the update. Simply connect that imager to your PC and turn it on. Once the 'Eclipse LD Connected' icon appears, you can click the 'Manage Attached Imager' button and follow the instructions to complete the update process. **Do not disconnect power or unplug your imager from your PC until this process is complete.**





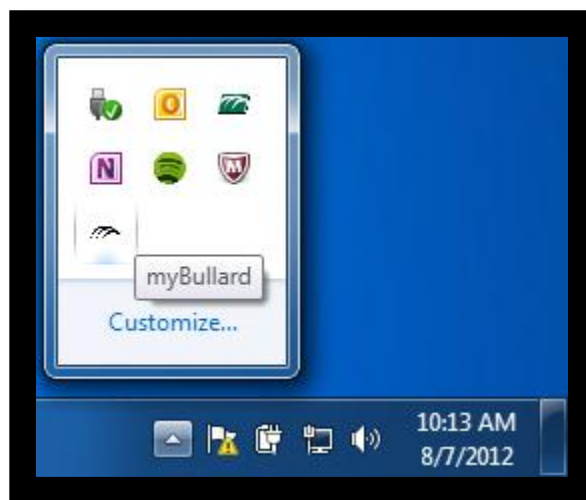
From the 'Features and Upgrades' menu, you can upload custom startup graphics to your imager(s), modify your imager(s)' temperature management settings and learn more about the various features available for your Eclipse LD thermal imager(s).



From the SceneCatcher module, you can download and watch videos from your SceneCatcher device, capture screen shots from your videos, rename videos and images, and archive them to your PC. You will need Windows Media Player 10 or higher installed on your PC to view videos in the SceneCatcher module.



In order to synchronize your PC's time to your SceneCatcher device, be sure to first connect your SceneCatcher device, power it on and wait for the device connected icon to appear in the bottom right of your screen. Click the 'Synchronize Clock' icon. Once complete, power off your device for at least 3 seconds in order to apply the updated time to your SceneCatcher.



In order to close myBullard, right click on the myBullard logo in the system tray located on the task bar in Windows and select 'Exit myBullard'.