

eclipse® LDX

SEE THE CLARITY.



THERMAL IMAGERS

The Best Image Quality. Ever.

Enhanced with the newest state-of-the-art infrared engine technology, the Eclipse® LDX offers the fire service the highest image quality and performance on the market.

Bullard extrem

OUTSTANDING Performance

The Eclipse LDX uses infrared engine technology running at an ultra-fast 60 Hertz image update rate and incorporates Image Contrast Enhancement (ICE™) technology for the ultimate image performance in fire conditions. Housed in a compact, sleek design, the Eclipse LDX is available in 240 X 180 and 320 x 240 resolutions to accommodate your budget.

BRIGHTEST LCD Display

The new display on the Eclipse LDX greatly increases brightness and improves contrast, enabling firefighters to see more clearly in thick smoke and direct sunlight.

ADVANCED Features

Temperature measurement in numeric and/or relative heat indicator formats and Super Red Hot colorization, highlighting high-heat scenes in brilliant shades of yellow orange and red come standard with the Eclipse LDX. Available optional features are Hot Area Detection, showing a green box that automatically marks the hottest point in a scene, and an integrated Digital Video Recorder.

NEW Look & Feel

The Eclipse LDX is distinguishable from other thermal imagers with a cool, blue metallic swirl color. Additionally, the imager has an improved power button design that enables easier powering on and off with a gloved hand.

FIVE YEAR Warranty

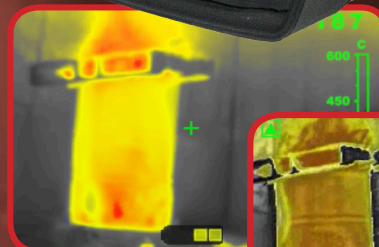
All X Factor Thermal Imagers come standard with a five-year, industry leading, full service warranty on parts and labor, batteries not included.

ICE™ Image Processing

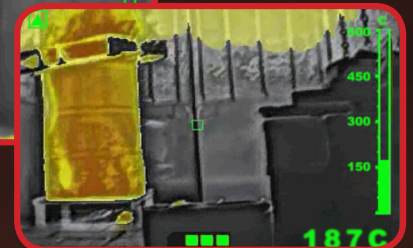
Equipped with ICE, the Eclipse LDX provides superior infrared imagery utilizing state-of-the-art image processing techniques. ICE technology sharpens the distinction between objects and backgrounds and optimizes the image for greater clarity. With ICE, firefighters can detect beyond the fire.



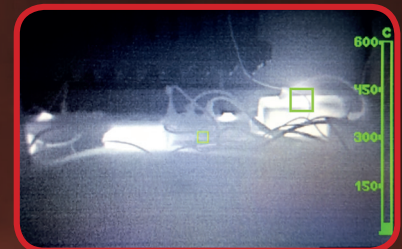
X Factor
Technology
featuring
Super Red Hot



Past



Present



Hot Area Detection
(optional)



www.bullard.com

Technical Specifications



Physical

• Configuration	Small Handheld Thermal Imager
• Weight (w/ battery)	0,895 kg
• Weight (w/o battery)	0,800 kg
• Dimensions	Length; 198mm x Height; 109mm x Width; 132mm
• Housing Material	Ultem® Thermoplastic
• Housing Color	Metallic Blue

Electrical

• Power Source	NiMH Rechargeable Battery
• Battery Capacity	1650 mAh
• Battery Cycles	> 800
• Start-up Time	< 4 Seconds
• Operating Time	2 Hours*
• Recharge Time	2 Hours

Infrared Detector

• Detector Type	Microbolometer
• Detector Sensing Material	Vanadium Oxide
• Detector Resolution	240 x 180 or 320 x 240
• Spectral Response	7-14 Microns
• Update Rate	60 Hz
• Temperature Sensitivity	< 0,05°C
• NETD	< 50 mK
• Dynamic Range	600° C
• Pixel Pitch	17 µm
• Video Polarity	White-Hot
• Temperature Measurement	Numeric and/or Bar Style
• Super Red Hot	Color above 260°C

Lens

• Material	Germanium
• Field of View	30° V x 40° H
• Focus	Fixed 1 meter to infinity
• Speed	f/1.4

Display

• Type	Digital, Liquid Crystal Display (LCD)
• Size	3,5" Diagonal TFT Active Matrix
• Pixel Format	RGB
• Brightness	500 cd/m² (minimum)
• Contrast Ratio	350:1 (typical)
• Viewing Angle (Typical)	Top = 60°, Bottom = 40°, Left / Right = 60°

Features and Accessories (optionally installed in unit)

• Hot Area Detection	Green Hot-Zone Box
• SceneCatcher Digital Video Recorder	
– Video Format	NTSC
– Video File Type	AVI
– Video Image Size	720 x 480
– Video Record Time	5 hours
– Connection	USB

Performance

• 260° C Heat Resistance	5 minutes with no damage to electronics
• 150° C Heat Resistance	15 minutes of continued operation with no damage
• -29° C Cold Resistance	Continued operation
• Water Resistance	IP67
• Impact Resistance	Approximately 2m drops on concrete with no damage

* Without DVR operating

Accessories

Eclipse
Retract Strap



Eclipse
Battery
Charger Base



Eclipse
PowerUp



Eclipse
Powerhouse
Charger



Bullard Center
2421 Fortune Drive
Lexington, KY 40509 • USA
877-BULLARD (285-5273)
Tel: +1-859-234-6616
Fax: +1-859-246-0243

Americas Operations
1898 Safety Way
Cynthiana, KY 41031 • USA
877-BULLARD (285-5273)
Tel: +1-859-234-6616
Fax: +1-859-234-8987

Bullard GmbH
Dieselstrasse 8a
53424 Remagen • Germany
Tel: +49-2642 999980
Fax: +49-2642 9999829

Bullard Asia-Pacific Pte. Ltd.
51 Changi Business Park Central 2
#03-04 The Signature
Singapore 486066
Tel: +65 6745 0556