

### PREPARING THE CHARGER FOR USE

#### USING THE XS CHARGER ON A TABLETOP

The XS Truckmount Charger can be used as a stand-alone device on a tabletop. To use in this manner, install the optional AC adapter as pictured in Figure 1.

#### INSTALLING THE XS CHARGER IN A VEHICLE:

##### Installation

The XS Charger is designed to be mounted on any convenient flat-panel surface in a vehicle. When installed and used in accordance with these instructions, the unit is designed to comply with NFPA 1901-14.1.11.2 and EN1846-2 (see caution for proper installation).

##### Location

Select a conveniently located, flat-panel surface of sufficient size to accommodate the unit. The unit can be mounted in any orientation and will comply with NFPA 1901-14.1.11.2 and EN1846-2. The XS Charger attaches through with five (5) #10 Hex Head Drilling Screws that are also provided with the unit. Allow 6-inch clearance above the charger to remove TXS.

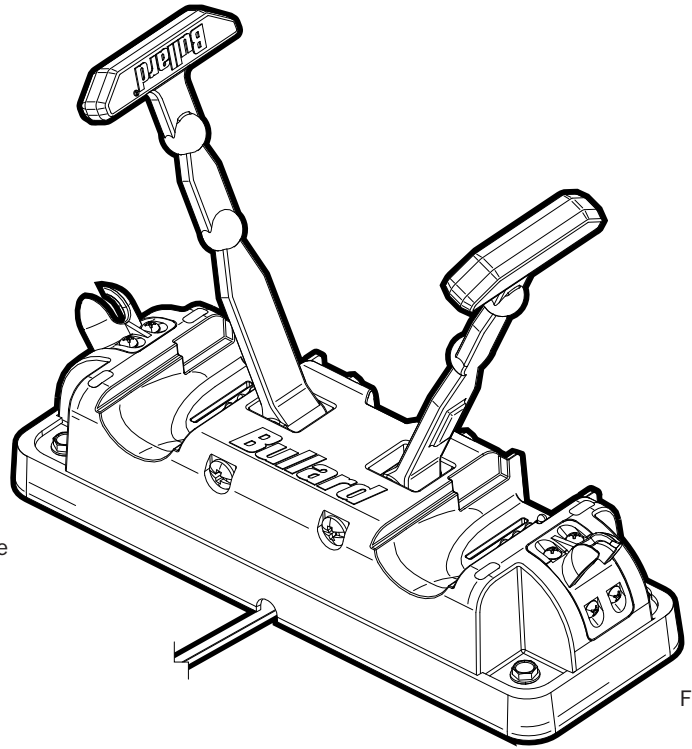


Figure 1

#### NOTE

The XS Charger should be connected to an un-switched fused circuit such as the apparatus battery that continues to provide power when the vehicle is not in use. Wiring the XS Charger to a switched circuit or through a relay may result in discharged imager batteries if the vehicle is left idle for periods of more than a few days at a time.

Item	Requirements
Polarity	Red: Positive + Black: Negative -
Input voltage	12V - 24V
Input current	2A @ 12V
Minimum gauge	18 AWG / $\varnothing$ 1 mm <sup>2</sup>

#### WARNING

DO NOT wire the XS Charger to a third-party apparatus battery charger! Failure to comply may result in improper function of the XS Charger.

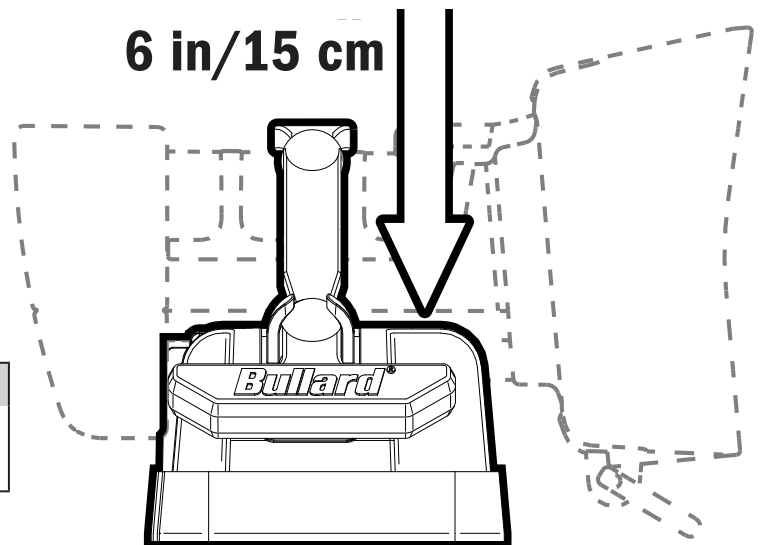


Figure 2

### INSTALLING THE CABLE IN THE CHARGER

#### MARKING AND DRILLING THE PANEL

Mark the locations of the five countersunk holes using the template as a guide. Ensure that there are no sharp edges or burrs that could harm the wiring insulation (Figure 3).

#### MOUNTING THE XS CHARGER

First, make sure that the power is disconnected from the supply wiring. Next, connect the positive power source wire securely to the red conductor located on the back of the XS Truckmount Charger. Then connect the negative power source wire securely to the black conductor located on the back of the XS Truckmount Charger.

The XS Truckmount Charger screws directly into the flat panel using the five (5) #10 Hex Head Drilling Screws included in your installation kit. Installation is now complete (Figure 4).

#### OPERATION

The XS Charger charging station is designed to perform the following functions:

- Securing the imager and/or battery in the vehicle in accordance with NFPA 1901-14.1.11.2 and EN1846-2.
- Storing and recharging the imager and/or battery and maintaining the battery at full charge.

#### CHARGING CONFIGURATIONS

The XS Charger allows for a flexible camera management and can charge simultaneously:

- 1) two imagers
- 2) two batteries
- 3) one imager and one battery

#### INSERTING THE TXS INTO THE XS CHARGER

##### ⚠ NOTE

To store the TXS in the XS Charger, a battery must be installed in the camera. Without a battery installed, the rubber strap will not secure the camera properly. Therefore, storing a camera without the battery installed can result in non-compliance with NFPA 1901-14.1.11.2 and EN18462. Set the imager firmly into place in the XS Charger. Maintain the unit in position, fold over the rubber strap and attach in place so that the rubber ball fits into the hook.

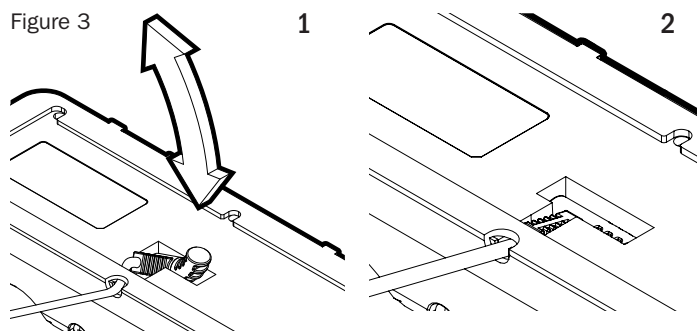


Figure 4

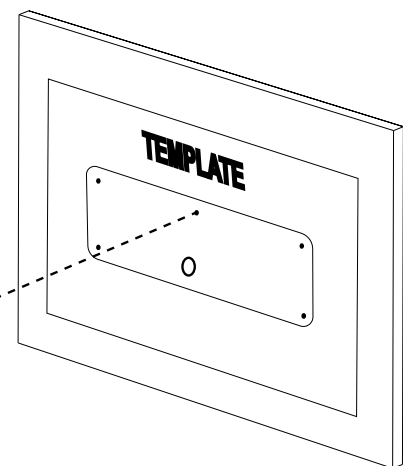
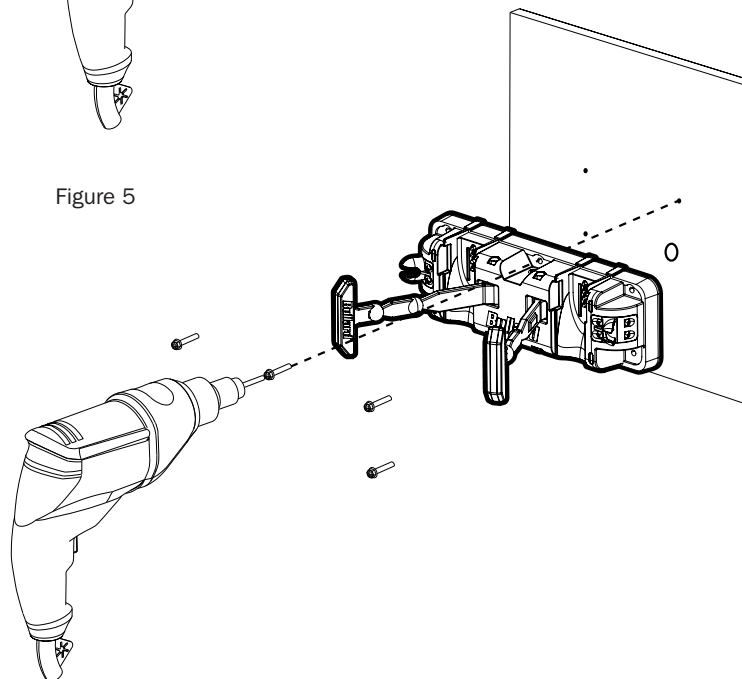


Figure 5



### REMOVING THE TXS FROM THE XS CHARGER

Pull down on the rubber strap until the rubber ball comes loose from the hook, unfold the rubber strap and remove the camera from the charger.

### INSERTING THE SPARE RECHARGEABLE BATTERY INTO THE XS CHARGER

The XS Charger charger is designed so that a spare battery, or second camera can be recharged on the same unit. Set the battery firmly into place in the XS Charger. Maintain the battery in position, fold over the rubber strap and attach in place so that the rubber ball fits into the hook.

### CHARGING STATUS

The charger is automatically activated when an imager or battery is inserted. Battery charge condition is indicated by the color of the light emitted by the LEDs.

**PULSING GREEN:** Battery is charging

**SOLID GREEN:** Battery is fully charged

**FLASHING ORANGE:** Error condition (problem with the TI or charging system).

#### ▲ WARNING

**EXPLOSION HAZARD.** Do not connect or disconnect the equipment to any charger in a hazardous location.  
Do not short circuit, crush, incinerate, or disassemble.  
Risk of fire, explosion, or burns.

#### ▲ WARNING

Only Charge using Bullard XS charger, or Bullard provided USB plug.

#### ▲ WARNING

Always use the correct charger and refer to the manufacturer's instructions for proper charging instructions. Retain the original product literature for future reference.

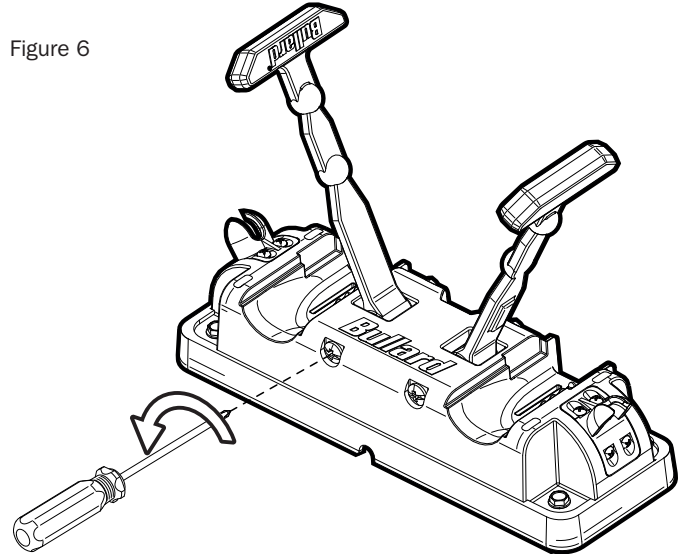
#### ▲ WARNING

Battery Pack must be recycled or disposed of properly.

#### ▲ WARNING

Battery Pack charging temperature 0°C - 45°C.

Figure 6



### TROUBLESHOOTING

If you experience any problems with your TXS we refer to our website ([www.bullard.com/txs](http://www.bullard.com/txs)) for the latest information on fixes, updates, and best practices.

### REPLACING THE RUBBER STRAPS

The rubber straps are designed to be replaced. To replace the rubber straps, unscrew with a Phillips or flathead screwdriver, pull out the hex head screw and binding barrel, replace the strap, and reassemble. (figure 6)

#### ▲ WARNING

The XS Charger is compliant with NFPA 1901-14.1.11.2 and EN1846-2 and is able to be mounted in any orientation. Please use caution when choosing a mounting location so that, if the camera is accidentally dropped while being installed in the XS Charger, it will not injure anyone nearby. For this reason, we do not recommend mounting the XS Truckmount Charger on the ceiling of any vehicle. Use only a fused power source of 2 amp capacity and 12-24 VDC voltage. Ensure that the polarity of the power supply wiring is correct. Failure to follow these instructions could result in serious injury or malfunction of the unit.

#### California Proposition 65 ▲ WARNING

Cancer and Reproductive Harm- [www.P65Warnings.ca.gov](http://www.P65Warnings.ca.gov).



# BULLARD XS CHARGER

## INSTRUCTION MANUAL

**Bullard Center**  
2421 Fortune Drive  
Lexington, KY 40509 • USA  
877.BULLARD (285.5273)  
Tel: +1.859.234.6616  
Fax: +1.859.246.0243

**Americas Operations**  
1898 Safety Way  
Cynthiana, KY 41031 • USA  
877.BULLARD (285.5273)  
Tel: +1.859.234.6616  
Fax: +1.859.234.8987

**Bullard GmbH**  
Dieselstrasse 8a  
53424 Remagen • Germany  
Tel: +49.2642.999980  
Fax: +49.2642.9999829

**Bullard Asia Pacific** 51 Changi  
Business Park Central 2  
#03-04 The Signature  
Singapore 486066  
Tel: +65.6745.0556  
Fax: +65.6797.0299

**Bullard Technology Center**  
Darix Sàrl  
Chemin du Closel 3  
1020 Renens • Switzerland  
Tel: +41.21.515.2910