

OVERVIEW

USING THE XS CHARGER ON A TABLETOP

The XS Truckmount Charger can be used as a stand-alone device on a tabletop. To use in this manner, install the optional AC adapter as pictured in Figure 1.

INSTALLING THE XS CHARGER IN A VEHICLE:

Installation

The XS Charger is designed to be mounted on any convenient flat-panel surface in a vehicle. When installed and used in accordance with these instructions, the unit is designed to comply with NFPA 1901-14.1.11.2 and EN1846-2 (see caution for proper installation).

Location

Select a conveniently located, flat-panel surface of sufficient size to accommodate the unit. The unit can be mounted in any orientation and will comply with NFPA 1901-14.1.11.2 and EN1846-2. The XS Charger attaches through with five (5) #10 Hex Head Drilling Screws that are also provided with the unit. Allow 6-inch clearance above the charger to remove TXS.

NOTE

The XS Charger should be connected to an un-switched fused circuit such as the apparatus battery that continues to provide power when the vehicle is not in use. Wiring the XS Charger to a switched circuit or through a relay may result in discharged imager batteries if the vehicle is left idle for periods of more than a few days at a time.

Item	Requirements
Polarity	Red: Positive + Black: Negative -
Input voltage	12V - 24V
Input current	2A @ 12V
Minimum gauge	18 AWG / Ø 1 mm ²

WARNING

DO NOT wire the XS Charger to a third-party apparatus battery charger! Failure to comply may result in improper function of the XS Charger.

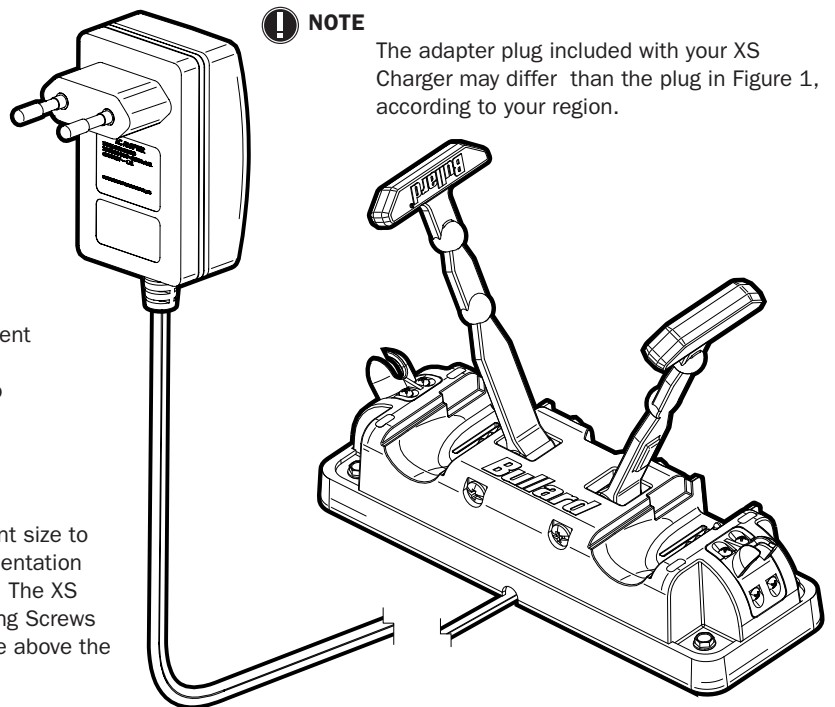


Figure 1

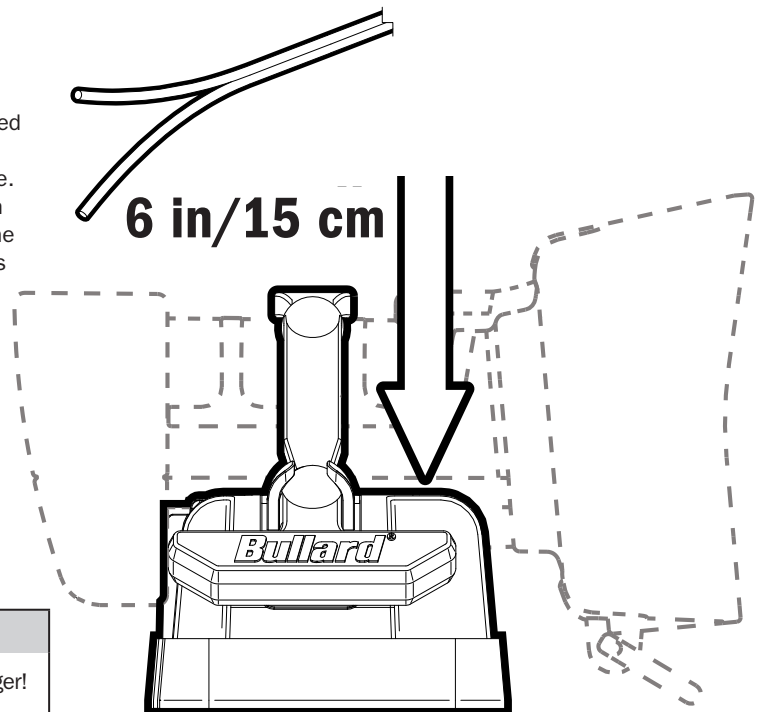


Figure 2

INSTALLING THE CABLE IN THE CHARGER

MARKING AND DRILLING THE PANEL

Print template (located on the back page of this manual) and place the template in the desired position in the truck. Mark the locations of the five countersunk holes and electrical wire hole using the template as a guide. Drill a suitably-sized hole in the truck panel through which the XS Charger wiring will pass, ensuring that there are no sharp edges or burrs that could harm the wiring insulation (Figure 3).

MOUNTING THE XS CHARGER

First, make sure that the power is disconnected from the supply wiring. Next, connect the positive power source wire securely to the red conductor located on the back of the XS Truckmount Charger. Then connect the negative power source wire securely to the black conductor located on the back of the XS Truckmount Charger.

The XS Truckmount Charger screws directly into the flat panel using the five (5) #10 Hex Head Drilling Screws included in your installation kit. Installation is now complete (Figure 4).

OPERATION

The XS Charger charging station is designed to perform the following functions:

- Securing the imager in the vehicle in accordance with NFPA 1901-14.1.11.2 and EN1846-2.
- Storing and recharging the battery in the imager and maintaining the battery at full charge.
- Securing a spare rechargeable battery in accordance with NFPA 1901- 14.1.11.2 and EN1846-2.
- Storing and recharging the spare battery and maintaining it at full charge.

CHARGING CONFIGURATIONS

The XS Charger allows for a flexible camera management and can charge simultaneously:

- 1) two imagers
- 2) two batteries
- 3) one imager and one battery

INSERTING THE TXS INTO THE XS CHARGER

NOTE

To store the TXS in the XS Charger, a battery must be installed in the camera. Without a battery installed, the rubber strap will not secure the camera properly. Therefore, storing a camera without the battery installed can result in non-compliance with NFPA 1901-14.1.11.2. Set the imager firmly into place in the XS Charger. Maintain the unit in position, fold over the rubber strap and attach in place so that the rubber ball fits into the hook.

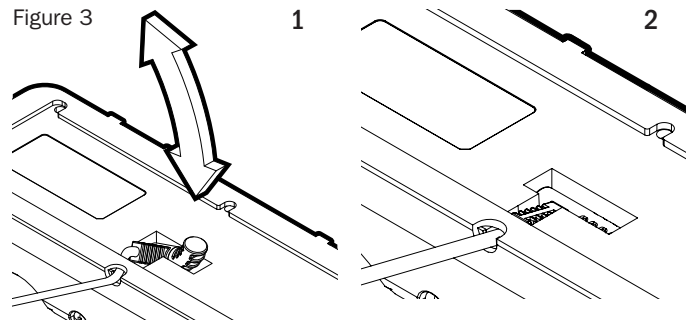


Figure 3

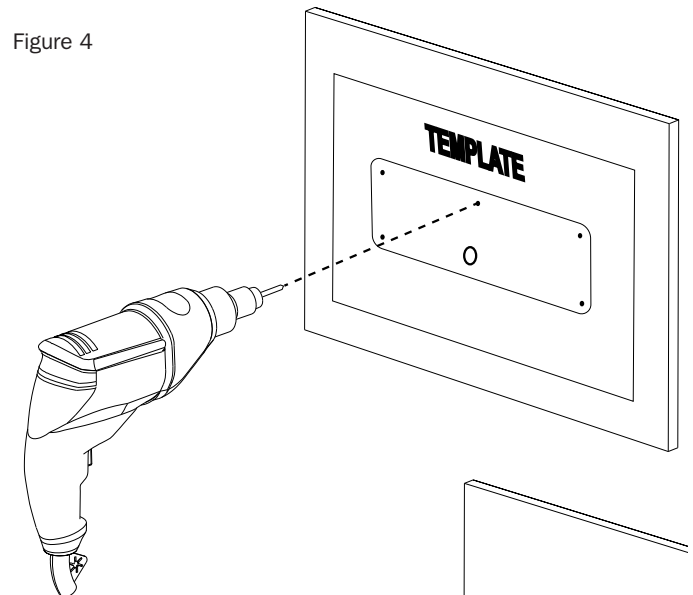


Figure 4

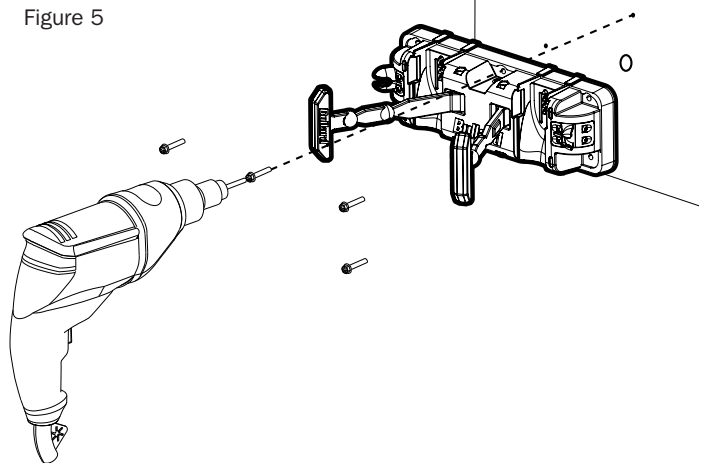


Figure 5

REMOVING THE TXS FROM THE XS CHARGER

Pull down on the rubber strap until the rubber ball comes loose from the hook, unfold the rubber strap and remove the camera from the charger.

REPLACING THE RUBBER STRAPS

The rubber straps are designed to be replaced. To replace the rubber straps, unscrew with a Phillips or flathead screwdriver, pull out the hex head screw and binding barrel, replace the strap, and reassemble. (figure 6)

INSERTING THE SPARE RECHARGEABLE BATTERY INTO THE XS CHARGER

The XS Charger charger is designed so that a spare battery, or second camera can be recharged on the same unit. Set the battery firmly into place in the XS Charger. Maintain the battery in position, fold over the rubber strap and attach in place so that the rubber ball fits into the hook.

CHARGING STATUS

The charger is automatically activated when an imager or battery is inserted. Battery charge condition is indicated by the color of the light emitted by the LEDs.

PULSING GREEN: Battery is charging

SOLID GREEN: Battery is fully charged

FLASHING ORANGE: Error condition (problem with the TI or charging system).

▲ WARNING

EXPLOSION HAZARD. Do not connect or disconnect the equipment to any charger in an hazardous location.

Do not short circuit, crush, incinerate, or disassemble.
Risk of fire, explosion, or burns.

▲ WARNING

Only Charge using Bullard XS charger, or Bullard provided USB plug.

▲ WARNING

Always use the correct charger and refer to the manufacturer's instructions for proper charging instructions. Retain the original product literature for future reference.

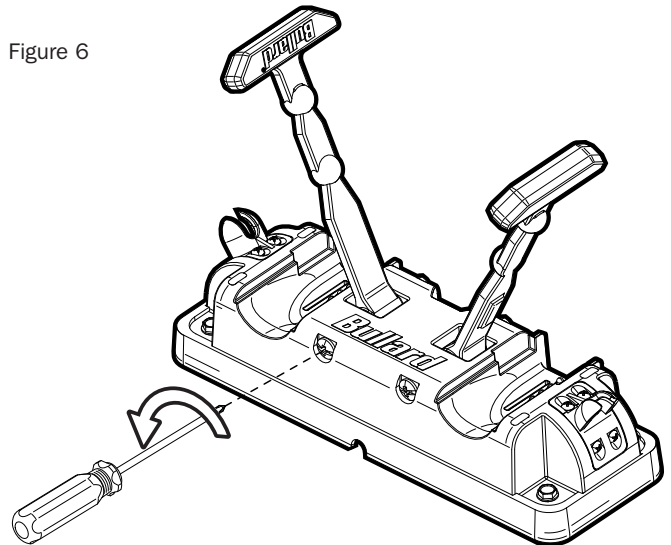
▲ WARNING

Battery Pack must be recycled or disposed of properly.

▲ WARNING

Battery Pack charging temperature 0°C - 45°C.

Figure 6



TROUBLESHOOTING

If you experience any problems with your TXS we refer to our website (www.bullard.com/txs) for the latest information on fixes, updates, and best practices.

▲ WARNING

The XS Charger is compliant with NFPA 1901-14.1.11.2 and EN1846-2 and is able to be mounted in any orientation. Please use caution when choosing a mounting location so that, if the camera is accidentally dropped while being installed in the XS Charger, it will not injure anyone nearby. For this reason, we do not recommend mounting the XS Truckmount Charger on the ceiling of any vehicle. Use only a fused power source of 2 amp capacity and 12-24 VDC voltage. Ensure that the polarity of the power supply wiring is correct. Failure to follow these instructions could result in serious injury or malfunction of the unit.

California Proposition 65 ▲ WARNING

Cancer and Reproductive Harm- www.P65Warnings.ca.gov.

Bullard Center

2421 Fortune Drive
Lexington, KY 40509 • USA
877-BULLARD (285-5273)
Tel: +1-859-234-6616
Fax: +1-859-246-0243

Bullard GmbH

Dieselstraße 8a
53424 Remagen • Deutschland
Tel: +49-2642 999980
Fax: +49-2642 9999829

Bullard Technology Center

Darix Särl
Chemin du Closel 3
1020 Renens • Switzerland
Tel: +41.21.515.2910

Americas Operations

1898 Safety Way
Cynthiana, KY 41031 • USA
877-BULLARD (285-5273)
Tel: +1-859-234-6616
Fax: +1-859-234-8987

Bullard Asia Pacific

51 Changi
Business Park Central 2
#03-04 The Signature
Singapore 486066
Tel: +65 6745 0556



$d = 13/16'' / 20 \text{ mm}$



$d = 3/16'' / 4.7 \text{ mm}$



Leave free for camera

7"

Leave free for camera

Wire passage

