



**ELECTRONIC COPY**

Sample  
Report verification at [igi.org](http://igi.org)

**LABORATORY GROWN DIAMOND REPORT**

January 27, 2024  
IGI Report Number  
Description  
Shape and Cutting Style  
Measurements

Sample  
**LABORATORY GROWN  
DIAMOND**  
**ROUND BRILLIANT**  
**6.50 - 6.55 X 4.39 MM**

**GRADING RESULTS**

Carat Weight  
Color Grade  
Clarity Grade  
Cut Grade

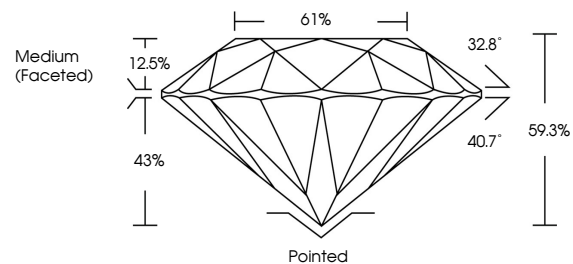
**1.00 CARAT**  
**F**  
**VS 1**  
**EXCELLENT**

**ADDITIONAL GRADING INFORMATION**

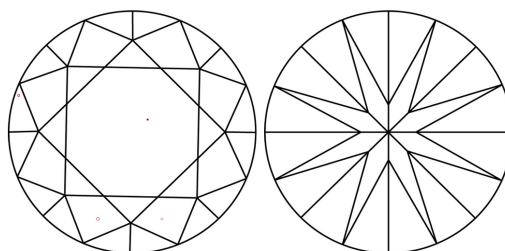
Polish  
Symmetry  
Fluorescence  
Inscription(s)

**EXCELLENT**  
**EXCELLENT**  
**NONE**  
Sample

**PROPORTIONS**



**CLARITY CHARACTERISTICS**



**KEY TO SYMBOLS**

Sample

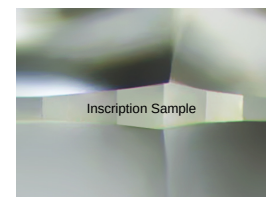
**GRADING SCALES**

**CLARITY**

IF	VVS <sup>1-2</sup>	VS <sup>1-2</sup>	SI <sup>1-2</sup>	I <sup>1-3</sup>
Internally Flawless	Very Very Slightly Included	Very Slightly Included	Slightly Included	Included

**COLOR**

D	E	F	G	H	I	J	Faint	Very Light	Light
---	---	---	---	---	---	---	-------	------------	-------



Sample Image Used

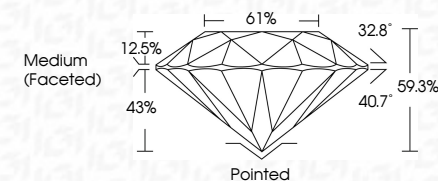
January 27, 2024  
IGI Report Number  
Description  
Shape and Cutting Style  
Measurements

Sample  
**LABORATORY GROWN  
DIAMOND**  
**ROUND BRILLIANT**  
**6.50 - 6.55 X 4.39mm**

**GRADING RESULTS**

Carat Weight  
Color Grade  
Clarity Grade  
Cut Grade

**1.00 CARAT**  
**F**  
**VS 1**  
**EXCELLENT**



**ADDITIONAL GRADING INFORMATION**

Polish  
Symmetry  
Fluorescence  
Inscription(s)

**EXCELLENT**  
**EXCELLENT**  
**NONE**  
Sample



**IGI**

January 27, 2024	1.00 CARAT	F	VS 1	EXCELLENT	61%	Medium (Faceted)	Pointed	EXCELLENT	EXCELLENT	NONE	IGI L681841804	
IGI Report No. L	Carat Weight	Color Grade	Clarity Grade	Cut Grade	Depth	Table	Girdle	Culet	Polish	Symmetry	Fluorescence	Inscriptions(s)
ROUND BRILLIANT	6.50 - 6.55 X 4.39 MM	F	VS 1	EXCELLENT	59.3%	61%	Medium (Faceted)	Pointed	EXCELLENT	EXCELLENT	NONE	IGI L681841804

Comments: This Laboratory Grown Diamond was created using Chemical Vapor Deposition (CVD) growth process and may include post-growth treatment.  
Type Iia