



ELECTRONIC COPY

Sample
Report verification at igi.org



May 29, 2025
IGI Report Number **LG712507129**
Description **LABORATORY GROWN DIAMOND**
Shape and Cutting Style **ROUND BRILLIANT**
Measurements **6.50 - 6.56 X 4.97 MM**
GRADING RESULTS
Carat Weight **1.00 CARATS**
Color Grade **FANCY VIVID PINK**
Clarity Grade **VS 1**
Cut Grade **IDEAL**

LABORATORY GROWN DIAMOND REPORT

May 29, 2025
IGI Report Number **Sample**
Description **LABORATORY GROWN DIAMOND**
Shape and Cutting Style **ROUND BRILLIANT**
Measurements **6.50 - 6.56 X 4.97 MM**

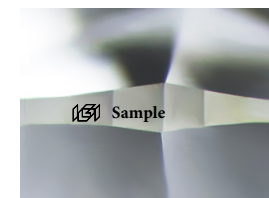
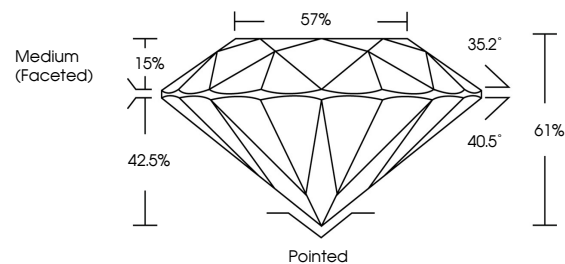
GRADING RESULTS

Carat Weight **1.00 Carats**
Color Grade **FANCY VIVID PINK**
Clarity Grade **VS 1**
Cut Grade **IDEAL**

ADDITIONAL GRADING INFORMATION

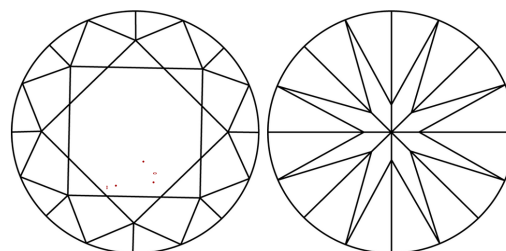
Polish **EXCELLENT**
Symmetry **EXCELLENT**
Fluorescence **STRONG**
Inscription(s) **Sample**

PROPORTIONS



Sample Image Used

CLARITY CHARACTERISTICS



KEY TO SYMBOLS

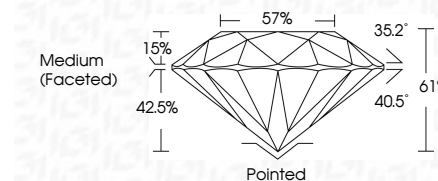
Red symbols indicate internal characteristics.
Green symbols indicate external characteristics.

COLOR

D E F G H I J Faint Very Light Light

CLARITY

IF	VS ¹⁻²	VS ¹⁻²	SI ¹⁻²	I ¹⁻³
Internally Flawless	Very Very Slightly Included	Very Slightly Included	Slightly Included	Included



ADDITIONAL GRADING INFORMATION

Polish **EXCELLENT**
Symmetry **EXCELLENT**
Fluorescence **STRONG**
Inscription(s) **Sample**



IGI



May 29, 2025	IGI Report No LG712507129	1.00 CARATS	FANCY VIVID PINK	VS 1	IDEAL	57%	Medium (Faceted)	Pointed	EXCELLENT	EXCELLENT	STRONG	IGI LG712507129	
ROUND BRILLIANT	6.50 - 6.56 X 4.97 MM	Carat Weight	Color Grade	Clarity Grade	Cut Grade	Depth	Table	Girdle	Polish	Symmetry	Fluorescence	Inscription(s)	Comments: