



Side Port Model



CSA-C439-18



ERV - Energy Recovery Air Exchanger with Recirculation

GSAME230R

Features

Air flow and performance

- Fully adjustable air flow (230 cfm @ 0 in.w.g.).
- 68% sensible recovery effectiveness at 0 °C (32 °F) 30 L/s, 58% sensible recovery effectiveness at -25 °C (-13 °F) 26 L/s.
- Recirculation defrosts.

Voltage

- 120V, 60Hz, 1.1A.

Benefit

- Reduce heating demand in winter and cooling demand in summer.
- Whisper-quiet: factory calibrated and balanced.
- Easy installation and maintenance.
- Designed and manufactured in Canada to operate in variable climatic conditions.

Construction

- Door and housing in corrosion-resistant galvanized steel, 24-gauge, pre-painted neutral white.
- Convenient, screwless hinged door.
- Ultra-thin: 12 in. (305 mm).
- No drain required.
- Lightweight for ease of installation: 43 lb (19.5 kg).
- Port size: 6 in. (152 mm).
- MERV8 charcoal polyester filters.
- Side Port model only.
- Reverse air flow configuration available as a factory installed option (-R). For further explanation, please refer to the document Normal and Reverse.
- Backdraft damper required on fresh air inlet (not supplied).

Motor

- Energy-efficient, sealed European motor with closed housing and automatic reset thermal protection.
- Balancing without flow keys. 100% electronic adjustment. Pressure ports integrated into the door for precise, easy balancing.

Energy recovery core

- High-efficiency 100% polymer core, extremely durable.
- Recovers both latent and sensible energy. (Heat and Humidity).
- Meets or exceeds ASHRAE 90.1-2010.
- Washable in soapy water to recover its full effectiveness without deterioration or contamination.
- Antimicrobial protection - ISO846.
- Avoid virus transfer - ASTM F-1671 tested.
- Zero crossflow contamination - Certified according to AHRI 1060.
- UL94 HB Flammability tested.

Control/timer

- Optional Decora-style wall-mounted control/timer (SA-LT15-B). INTERMITTENT (20-40) - CONTINUOUS - OFF - Timer (20-40-60 minutes).

Installation

- Can be ceiling-mounted or suspended.
- Easily installed in the ceiling void or just below the fire-rated ceiling.
- Set of nylon suspension straps included for installation.
- Basic air exchanger installation kit for 6 in. (152 mm) ducts, available as an option (KIT-GSA-INS-6).

Setting

- Balance the unit using the supplied instruction named: Balancing.
- All the installer needs are the required flow rates, a manometer, and 5 minutes to adjust and balance the system.
- Simply specify the air flow rates for LOW SPEED and HIGH SPEED.
- The static pressure of the system should ideally be less than or equal to the static pressure indicated by the graph for HIGH SPEED.
- You don't have to worry about static pressure to limit air flow or adding flow keys as other devices. All you must do is provide ducting that doesn't limit maximum flow, and the unit's adjustments will allow you to fine-tune flow rates.

Warranty

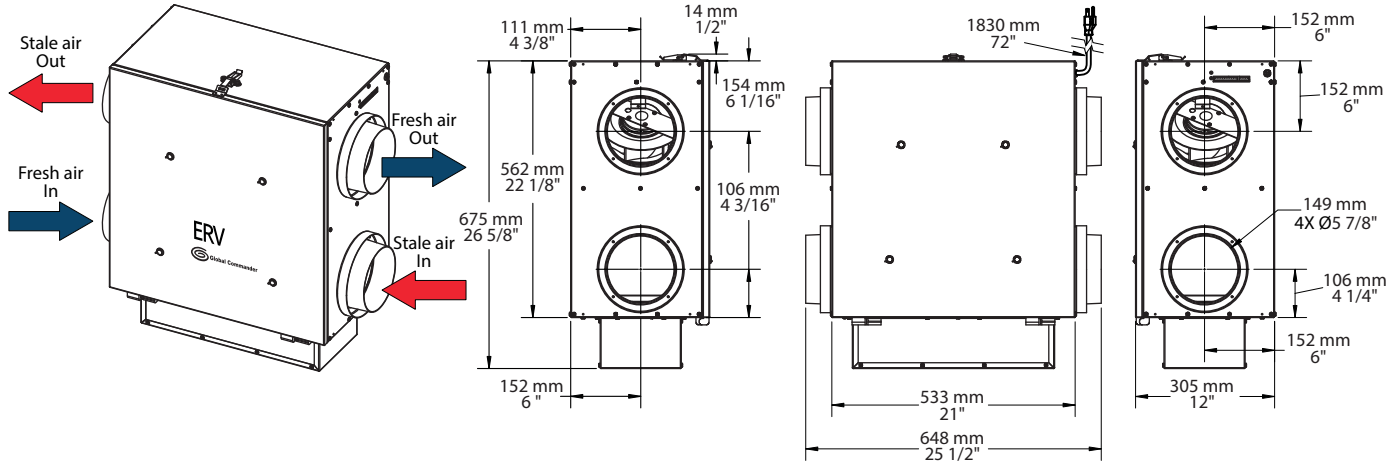
- Motor 5-year. Other parts except filters and pre-filters 1-year.

Application

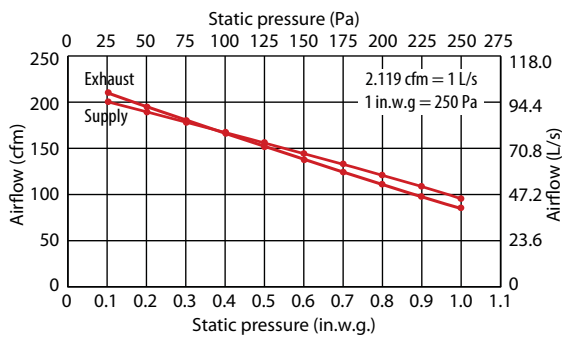
- The ideal solution for high-rise apartments and medium-size homes
- Purifies the air by expelling many pollutants, dust, and allergens to the outside, while ensuring an equivalent supply of fresh air in the home.

GSAME230R

Side Port Model



ERV GSAME230R - Curves at highest speed



Energy ratings - HVI certified

Supply temperature	Air flow	Power	Sensible recovery (SRE) ¹	Adjusted Sensible Recovery	Latent recovery / moisture transfer		
°C	°F	W	%	%	%		
Heating							
0	32	47	22	62	70	79	67
0	32	64	30	76	68	76	61
0	32	85	40	90	66	73	56
-25	-13	55	26	81	58	62	56
Cooling							
				Total recovery efficiency	Adjusted total recovery efficiency		
35	95	47	22	62	56	62	63

Model

Product #	cfm	Recirculation	SRE ¹	SRE ¹	Port	Volts	Hertz	Amp.	Weight		
			0 °C (32 °F) 30 L/s	-25 °C (-13 °F) 26 L/s	in.	mm			lb	kg	
ERV Energy recovery air exchanger 230 cfm (Side Port) with recirculation, control included											
GSAME230RS-C	230	Yes	68%	58%	6	152	120	60	1.1	43	19.5

¹ SRE: Sensible Recovery Effectiveness

Options

Product # Kit	Product # Factory installed	Description
KIT-GSA-INS-6	-	Air exchanger installation kit, 6 in. (152 mm) ducts
KIT-SA-FI-230	-	Kit of 2 filters for 230R air exchanger
-	R	Reverse air flow

Control

Product #	Description
SA-LT15-B	Decora-style wall-mounted control/timer for residential air exchangers

