

V•ROD POLY 46

GLASS FIBER REINFORCED POLYMER (GFRP) REBAR

REVISION: March, 2024

Product Data Sheet - V•ROD POLY 46

		#3	#4	#5
Minimum tensile strength (ASTM D7205)	MPa	1 000		
Minimum V•ROD tensile load capacity	kgf	7 200	13 000	20 300
Average steel tensile load capacity	kgf	3 300	5 895	9 150
Minimum tensile modulus	GPa	46		
Weight	g/m	147	254	402
Measured diameter	mm	10.1	13	16.1
Nominal cross-sectional area*	mm ²	71.3	126.7	197.9



4x Lighter
Than Steel



2,5 x Stronger
Than Steel



Resilient



Durability /
Corrosion
Resistance



Radio /cellular
waves permeable

OFFICIAL DISTRIBUTOR



Acier Picard Lévis

3000 rue de l'Étchemin
Lévis (Québec) G6W 7X6
T. 418 834-8300
SF. 1 888 834-0646
levis@groupepicard.ca

Acier Picard Varennes

1951 chemin de l'Énergie
Varennes (Québec) J3X 1P7
T. 450 652-7000
SF. 1 800 363-9407
joliette@groupepicard.ca

Acier Majeau Joliette

140 rue des Entreprises
Joliette (Québec) J6E 0L9
T. 450 756-1031
SF. 1 800 363-1782
varennes@groupepicard.ca

groupepicard.ca

Only
900 grams
per 6 m
long bar !



RAISING THE BAR

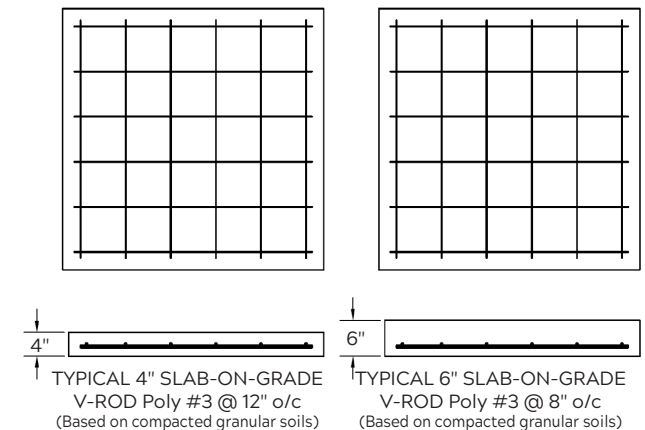
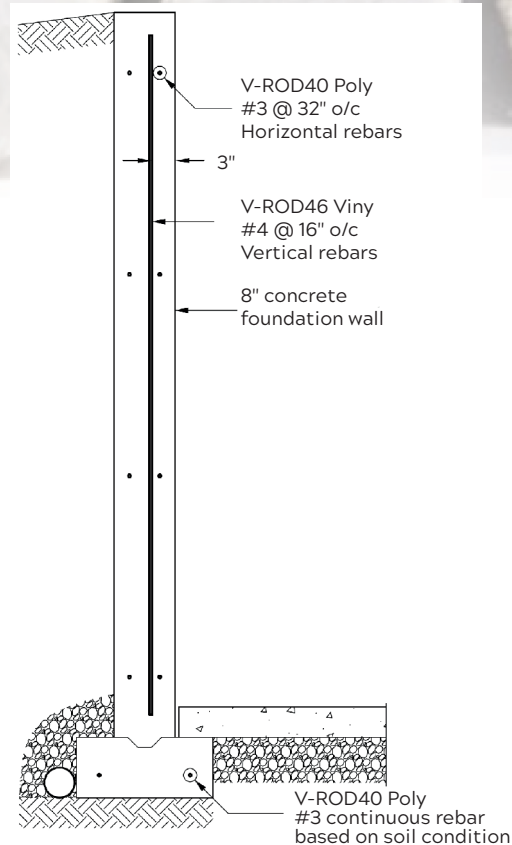
**V-ROD
POLY**

V-ROD Poly fiberglass rebar offers many advantages:

- 4 times lighter than steel means; easier to install, less placement time and reduced transportation cost.
- 4 times lighter also means reduced physical burden on workers, less injuries and reduced down time.
- V-ROD is resilient; Unlike steel, when stepped/driven on, V-ROD will deform and get back to its original shape
- V-ROD's sand coating and higher tensile strength provides with the best crack control among any kind of rebar available on the market.
- V-ROD does not rust! No more cracks due to corrosion.
- Bar certs to be provided on every lot
- Radio/cellular waves permeable

V-ROD is well suited for:

Slab on grade, Basement, Garage, Foundations, Commercial Slabs, Sidewalk...



Basement slabs	Garage slabs	Foundation walls	Commercial slabs
<ul style="list-style-type: none"> • V-ROD Poly 	<ul style="list-style-type: none"> • V-ROD Poly for light vehicles (not exceeding 4 tons) • Engineering required for heavy loads 	<ul style="list-style-type: none"> • V-ROD Poly for horizontal • Engineering required for heavy loads 	<ul style="list-style-type: none"> • V-ROD Poly for light loads (less than 100 PSF for instance) • Engineering required for heavy loads