

**WARNING:**

Failure to observe the following warnings may result in flooding, leaking, or product damage.

Do not disassemble, repair, or modify the product yourself.

Do not connect the main water supply to the hot water pipe or supply (only connect to the cold water supply).

Risk of scalding. High water temperature can cause severe burns. Be sure to set the water temperature for your hot water heater at or below 120°F (49°C) and use extreme caution when mixing hot and cold water during use. Brondell is not liable for any misuse of product or failure to use caution when connecting to hot water.

After the installation, make sure to check all water supply connections for leaks. Rubber washers should be in place for the water connection hoses and T-Valve.

Do not use the product if it is not working properly. Please close the main water supply valve, and call the Brondell Service center at (888) 542-3355. Failure to do so may result in flooding.

Only use the hoses, T-Valve(s), and components that are included with your product as they have been specifically designed and tested for safe use with this Bidet Attachment. Please note that use of unauthorized or non-Brondell approved parts could result in injury, leaking, or damages that Brondell will not be held liable for.

**Cold Water Supply Parts:**

- Bidet Attachment
- Adjustable Mounting Brackets (2)
- cold water T-Valve connector:  $\frac{1}{8}$ " x  $\frac{1}{8}$ " x  $\frac{3}{8}$ "
- Bidet Hose: 23.62"
- Rubber Washer (2)
- Teflon tape

**Hot Water Supply Parts:**

- Hot Water 3/8" T-Valve with 1/4" Pressure Connector and Pressure Cap
- 1/4" Hot Water Flex Tubing: 78.74"
- Hot Water Tubing Pressure Connector with Pressure Cap
- Small Rubber Washers (2)
- Hot Water Supply Cap

**Before Getting Started, You May Need:**

- A small towel or bucket to catch residual water.
- An adjustable wrench to tighten water supply connections.
- A standard or Phillips-head screwdriver to remove your toilet seat.

Check the water supply line: If the line that connects the toilet tank to the water shut-off valve is a rigid pipe, you will need to replace it with a flexible water supply line before installation.

**Before Installing the Hot Water Supply:**

Check the size of the hot water supply connection (most likely under the sink/washbasin). This should be a  $\frac{3}{8}$ " connection to properly fit and install the enclosed T-Valve.

**NOTE:** If the connection is a  $\frac{1}{2}$ " connection, you will need to purchase the following reducing adapter available online and at many plumbing hardware stores: Reducing Adapter,  $\frac{1}{2}$ " Female NPT x  $\frac{3}{8}$ " Male Compression

**To Use Bidet:**

1. To wash, turn the control dial to the right towards *WASH position*.
2. The further the dial is turned, the higher the water pressure will be.
3. To lower the water pressure, turn the dial back towards the center.
4. To turn off the bidet, return the dial to the *OFF* position.
5. Move the nozzle adjuster lever forward to position the nozzle away from you.
6. Move the nozzle adjuster lever backward to position the nozzle closer to you.
7. To clean the bidet nozzle, turn the control dial to the left to the *NOZZLE CLEAN* position and water will wash over the nozzle.

**To Adjust Temperature:**

1. To increase water temperature, slowly turn the temperature to the right until the desired temperature is reached.
  2. To decrease water temperature, turn the dial to the left until the desired temperature is reached.
- NOTE:** If only connected to cold water, make sure that the temperature dial on the bidet is turned as far to the left as possible for best pressure adjustability.

# Brondell®

Feels better already.

PO Box 470085  
San Francisco, CA 94147-0085  
(888) 542-3355  
brondell.com

# Brondell®

## PureSpa® Advanced Warm Water Bidet Attachment with Nozzle Control

### Quick Start Installation Guide

**Model:** CANPSA-25



For Owner's Manual and Help Center support, scan QR code or enter URL.  
[www.brondell.com/vkrubgcn](http://www.brondell.com/vkrubgcn)  
This guide saves trees, water, and energy.

**Connecting the Bidet Attachment and Cold Water Supply:**

1. Turn off the water supply valve and flush the toilet. Hold down the handle to completely empty the tank.

**NOTE:** Do not continue without completing the above steps. Failure to do so could result in flooding and leaking.

2. Disconnect the water supply line from the toilet tank. Do not disconnect from water supply valve on the wall.

3. Insert one or both of the flat rubber washers into the top of the cold water T-Valve and connect to the bottom of the toilet tank. Reconnect the water supply line to the bottom of the T-Valve.

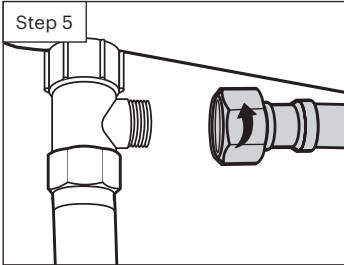
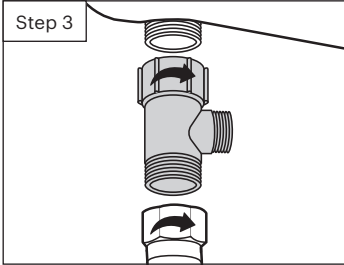
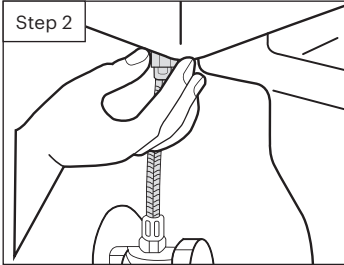
4. Remove the toilet seat using the standard or Phillips-head screwdriver. Set the seat, mounting bolts, and hardware aside.

5. Connect one end of the bidet hose to the open side of the installed T-Valve.

6. Place the adjustable mounting brackets into the circular holes on the bidet attachment.

7. Place the bidet attachment on the toilet, leaving a slight gap between the toilet and the nozzle.

8. Make sure the adjustable brackets line up with the holes in the toilet fixture. You may need to rotate the adjustable brackets to line them up properly.



9. Replace the toilet seat on top of the bidet attachment and secure using the original toilet seat hardware. Make sure to tighten so that the bidet attachment and the seat do not move.

**NOTE:** Before moving on to the next step, ensure the control dial is in the OFF position to prevent water from spraying out of the bowl.

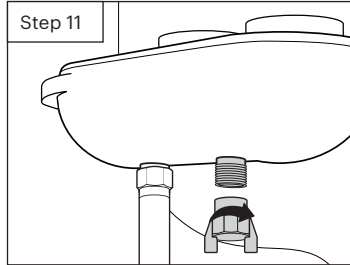
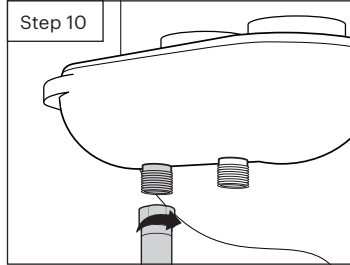
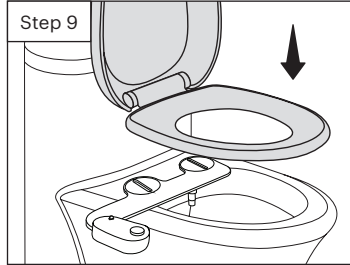
10. Connect the open end of bidet hose to the cold water connection under the bidet attachment.

**NOTE:** If you are connecting the hot water supply, skip step 11 and 12 and proceed to the section titled "Connecting the hot water supply."

11. If you are only connecting the cold water supply, you must install the hot water supply cap over the hot water connection on the side arm of the bidet. Failure to connect or cap the hot water supply will result in leaking during use.

12. Turn on the water supply valve slowly and wait for 5 minutes to check for leaks.

**NOTE:** If there is any leaking, check all rubber washers and make sure all water connections are tight and secure. If necessary, wrap Teflon tape around the threading of any leaking connections.



**Connecting the Hot Water Supply:**

1. Disconnect the hot water supply.

- a. Locate the hot water supply line in your bathroom under your sink/washbasin and turn the water supply valve all the way off.

- b. Drain the hot water line by turning on the sink tap on the hot setting until no more water comes out.

- c. Disconnect the hot water supply hose to sink from the shut-off valve. You may have to use a 3/4" compatible wrench or a similar tool (not supplied).

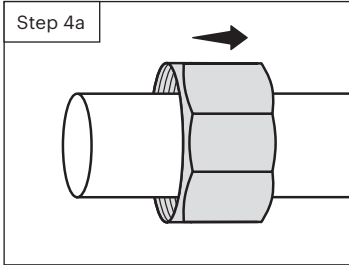
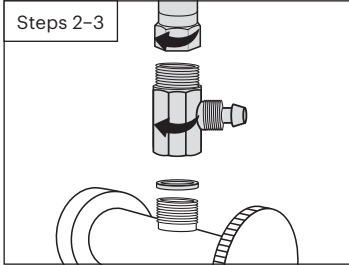
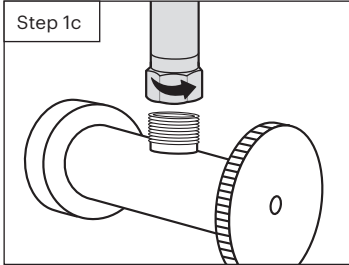
**NOTE:** There may be residual water in the hose. If so, use a small container or towel to catch any residual water.

2. Install the hot water 3/8" T-Valve and the small rubber washers as needed onto the hot water shut-off valve under the sink.

3. Reconnect hot water supply line to the top opening on the T-Valve.

4. If it hasn't been removed already, unscrew the pressure cap covering the pressure connector on the open end of the T-Valve.

- a. Slide the pressure cap over the open end of the hot water flex tubing with the inside threads facing out.



- b. Push the hot water flex tubing over the pressure connector until the tubing slides past the lip of the pressure connector and cannot go any further.

- c. Slide the pressure cap down until it meets the pressure connector.

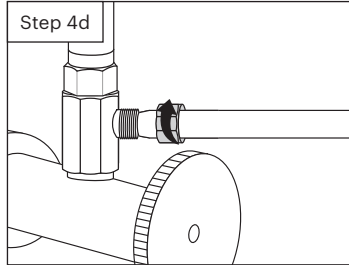
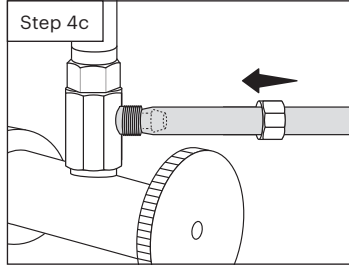
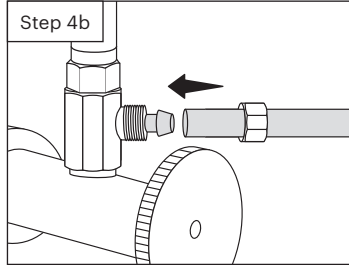
- d. Screw the pressure cap onto the T-Valve until it's secure and tight. Do not overtighten the pressure cap at the risk of damaging the tubing.

5. Connect hot water flex tubing to bidet attachment.

- a. Take the hot water tubing pressure connector and remove the pressure cap.

- b. Slide the pressure cap over the open end of the hot water flex tubing with the inside threads facing towards the open end.

- c. Push the pressure connector into the open end of the hot water flex tubing with the washer facing out. Slide the hot water flex tubing over the pressure connector until the tubing slides past the lip and cannot go any further.



- d. Hold the pressure connector up against the hot water inlet on the back of the bidet attachment. Slide the pressure cap along the tubing and screw the cap onto the hot water inlet until the pressure connector is secure.

6. Go back and complete step 12 on the previous section titled, "Connecting the bidet attachment and the cold water supply."

